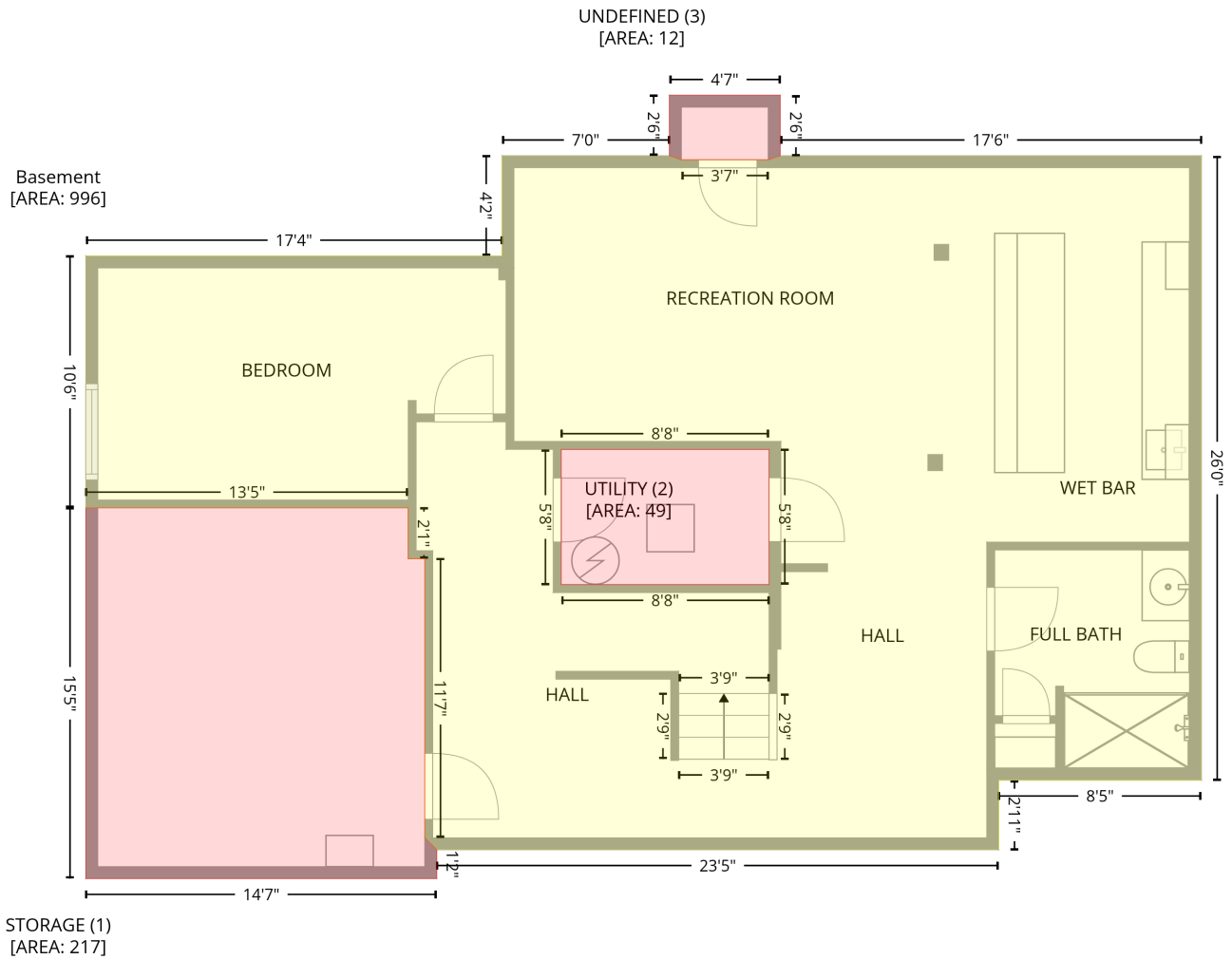


8301 Red Stone Hill Rd,Louisville,KY,US

Gross Living Area: 2568 sq. ft

Level 1 - Below Grade



Space	Area (sq. ft)	Calculation <small>Coordinate Polygon Area Algorithm using inches</small>
Basement (Living area)	996	$-\left((291 + 297) * (148.7 - 150.7) + (297 + 340.3) * (150.7 - 150.7) + (340.3 + 346.3) * (150.7 - 148.7) + (346.3 + 556.8) * (148.7 - 148.7) + (556.8 + 556.8) * (148.7 - 460.7) + (556.8 + 455.5) * (460.7 - 460.7) + (455.5 + 455.5) * (460.7 - 495.4) + (455.5 + 174.8) * (495.4 - 495.4) + (174.8 + 168.8) * (495.4 - 489.4) + (168.8 + 168.8) * (489.4 - 350) + (168.8 + 160.5) * (350 - 350) + (160.5 + 160.5) * (350 - 324.6) + (160.5 + -0.5) * (324.6 - 324.6) + (-0.5 + -0.5) * (324.6 - 198.7) + (-0.5 + 207.4) * (198.7 - 198.7) + (207.4 + 207.4) * (198.7 - 148.7) + (207.4 + 291) * (148.7 - 148.7)\right) * 0.5 * 0.00694 - \left((340.8 + 237) * (295.4 - 295.4) + (237 + 237) * (295.4 - 362.9) + (237 + 340.8) * (362.9 - 362.9) + (340.8 + 340.8) * (362.9 - 295.4)\right) * 0.5 * 0.00694$
STORAGE (Non-living area)	217	$-\left((160.5 + 160.5) * (324.6 - 350) + (160.5 + 168.8) * (350 - 350) + (168.8 + 168.8) * (350 - 489.4) + (168.8 + 174.8) * (489.4 - 495.4) + (174.8 + 174.8) * (495.4 - 509.8) + (174.8 + -0.5) * (509.8 - 509.8) + (-0.5 + -0.5) * (509.8 - 324.6) + (-0.5 + 160.5) * (324.6 - 324.6)\right) * 0.5 * 0.00694$
UTILITY (Non-living area)	49	$-\left((340.8 + 340.8) * (295.4 - 362.9) + (340.8 + 237) * (362.9 - 362.9) + (237 + 237) * (362.9 - 295.4) + (237 + 340.8) * (295.4 - 295.4)\right) * 0.5 * 0.00694$

8301 Red Stone Hill Rd,Louisville,KY,US

Gross Living Area: 2568 sq. ft

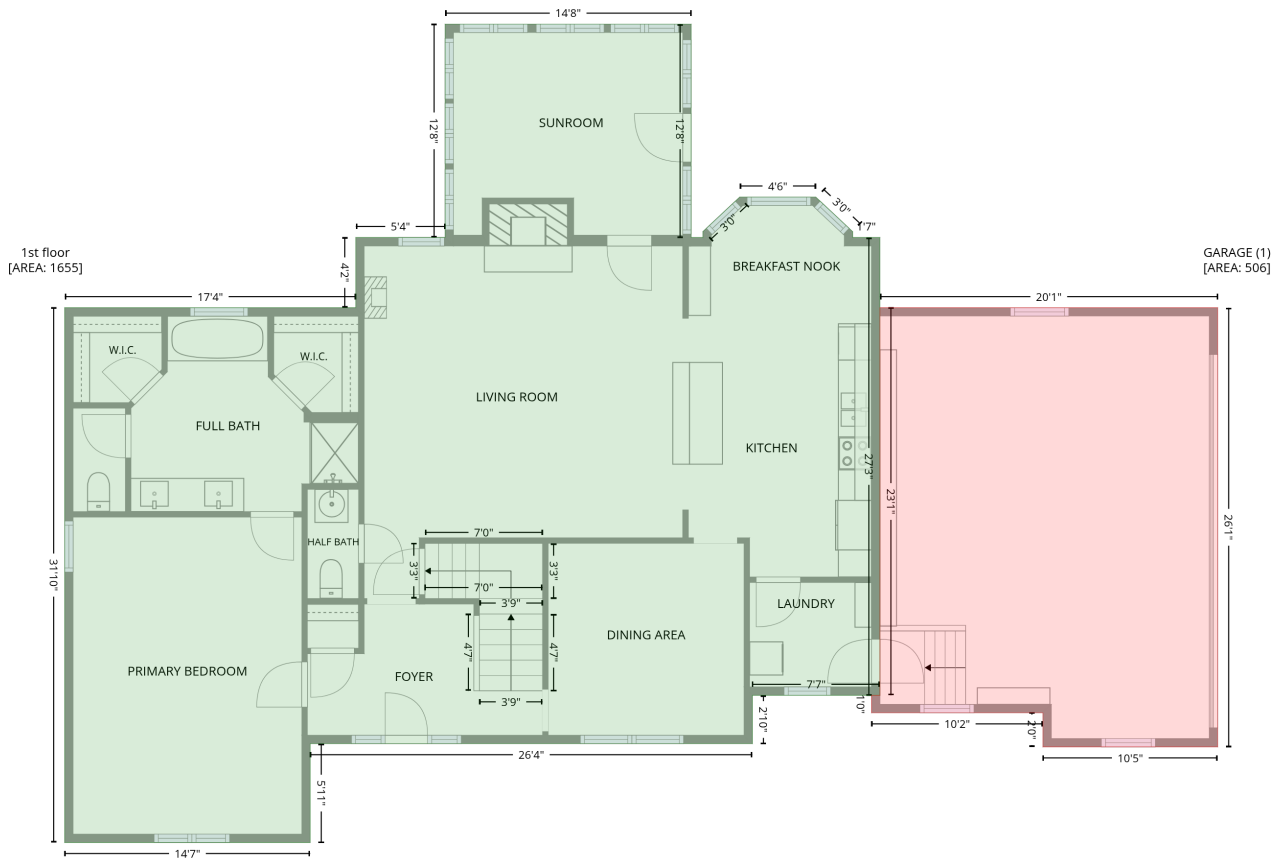
Level 1 - Below Grade

Space	Area (sq. ft)	Calculation <small>Coordinate Polygon Area Algorithm using inches</small>
UNDEFINED (Non-living area)	12	$-((346.3 + 346.3) * (118.4 - 148.7) + (346.3 + 340.3) * (148.7 - 150.7) + (340.3 + 297) * (150.7 - 150.7) + (297 + 291) * (150.7 - 148.7) + (291 + 291) * (148.7 - 118.4) + (291 + 346.3) * (118.4 - 118.4)) * 0.5 * 0.00694$

8301 Red Stone Hill Rd,Louisville,KY,US

Gross Living Area: 2568 sq. ft

Level 2

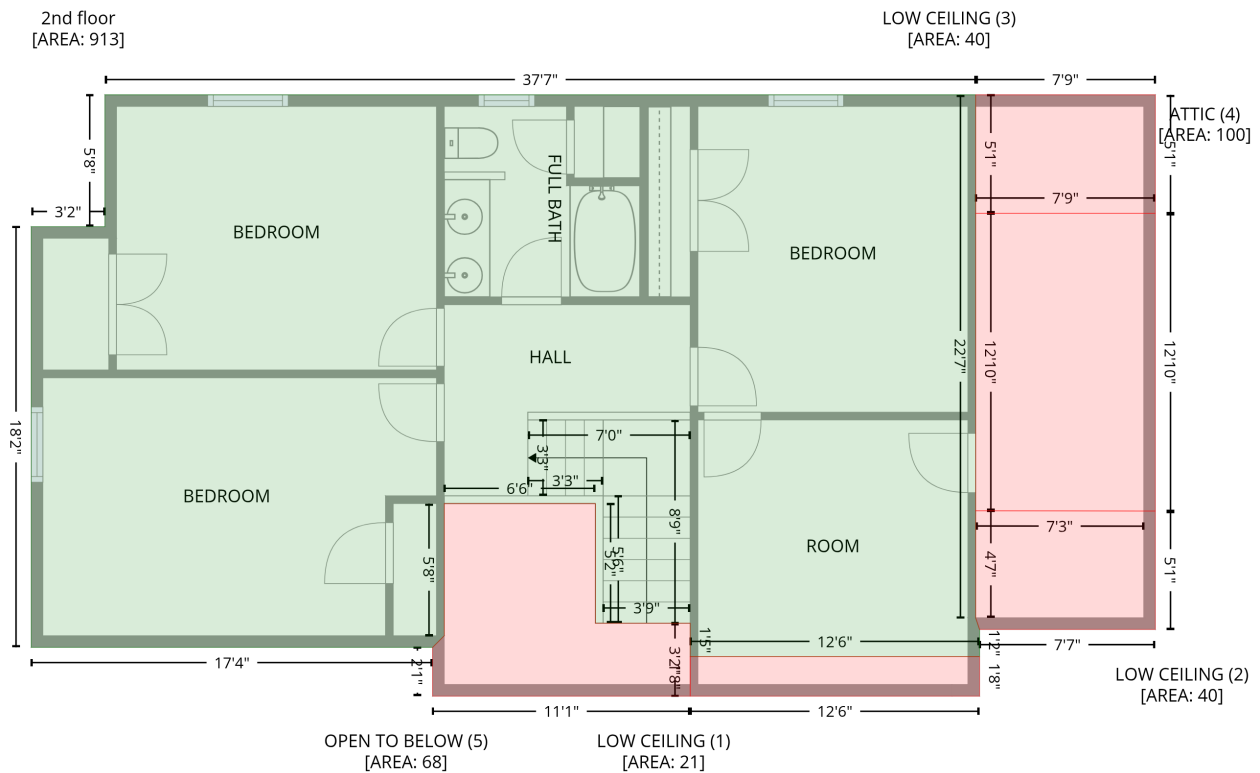


Space	Area (sq. ft)	Calculation
1st floor (Living area)	1655	Coordinate Polygon Area Algorithm using inches $-((446.9 + 446.9) * (-3.6 - 148.7) + (446.9 + 455.3) * (148.7 - 148.7) + (455.3 + 455.3) * (148.7 - 144.4) + (455.3 + 481.5) * (144.4 - 119.8) + (481.5 + 535.8) * (119.8 - 119.8) + (535.8 + 562.2) * (119.8 - 144.5) + (562.2 + 562.2) * (144.5 - 148.7) + (562.2 + 581.6) * (148.7 - 148.7) + (581.6 + 581.6) * (148.7 - 475.4) + (581.6 + 490.6) * (475.4 - 475.4) + (490.6 + 490.6) * (475.4 - 509.8) + (490.6 + 174.8) * (509.8 - 509.8) + (174.8 + 174.8) * (509.8 - 580.4) + (174.8 + -0.5) * (580.4 - 580.4) + (-0.5 + -0.5) * (580.4 - 198.7) + (-0.5 + 207.4) * (198.7 - 198.7) + (207.4 + 207.4) * (198.7 - 148.7) + (207.4 + 271.2) * (148.7 - 148.7) + (271.2 + 271.2) * (148.7 - -3.6) + (271.2 + 446.9) * (-3.6 - -3.6)) * 0.5 * 0.00694$
GARAGE (Non-living area)	506	$-((822.8 + 822.8) * (198.7 - 512.1) + (822.8 + 698.1) * (512.1 - 512.1) + (698.1 + 698.1) * (512.1 - 487.8) + (698.1 + 575.6) * (487.8 - 487.8) + (575.6 + 575.6) * (487.8 - 475.4) + (575.6 + 581.6) * (475.4 - 475.4) + (581.6 + 581.6) * (475.4 - 198.7) + (581.6 + 822.8) * (198.7 - 198.7)) * 0.5 * 0.00694$

8301 Red Stone Hill Rd,Louisville,KY,US

Gross Living Area: 2568 sq. ft

Level 3



Space	Area (sq. ft)	Calculation
2nd floor (Living area)	913	$-\left((488.6 + 488.6) * (198.7 - 469.4) + (488.6 + 490.6) * (469.4 - 475.4) + (490.6 + 490.6) * (475.4 - 489.4) + (490.6 + 340.8) * (489.4 - 489.4) + (340.8 + 340.8) * (489.4 - 472.1) + (340.8 + 291.7) * (472.1 - 472.1) + (291.7 + 291.7) * (472.1 - 410.2) + (291.7 + 213.4) * (410.2 - 410.2) + (213.4 + 213.4) * (410.2 - 478.6) + (213.4 + 207.4) * (478.6 - 484.6) + (207.4 + -0.5) * (484.6 - 484.6) + (-0.5 + -0.5) * (484.6 - 266.9) + (-0.5 + 37.7) * (266.9 - 266.9) + (37.7 + 37.7) * (266.9 - 198.7) + (37.7 + 488.6) * (198.7 - 198.7)\right) * 0.5 * 0.00694$
LOW CEILING (Non-living area)	21	$-\left((490.6 + 490.6) * (489.4 - 509.8) + (490.6 + 340.8) * (509.8 - 509.8) + (340.8 + 340.8) * (509.8 - 489.4) + (340.8 + 490.6) * (489.4 - 489.4)\right) * 0.5 * 0.00694$
LOW CEILING (Non-living area)	40	$-\left((488.6 + 575.6) * (414 - 414.1) + (575.6 + 581.6) * (414.1 - 414.1) + (581.6 + 581.6) * (414.1 - 475.4) + (581.6 + 490.6) * (475.4 - 475.4) + (490.6 + 488.6) * (475.4 - 469.4) + (488.6 + 488.6) * (469.4 - 414)\right) * 0.5 * 0.00694$
LOW CEILING (Non-living area)	40	$-\left((581.6 + 581.6) * (198.7 - 260) + (581.6 + 488.6) * (260 - 260) + (488.6 + 488.6) * (260 - 198.7) + (488.6 + 581.6) * (198.7 - 198.7)\right) * 0.5 * 0.00694$
ATTIC (Non-living area)	100	$-\left((581.6 + 581.6) * (260 - 414.1) + (581.6 + 575.6) * (414.1 - 414.1) + (575.6 + 488.6) * (414.1 - 414) + (488.6 + 488.6) * (414 - 260) + (488.6 + 581.6) * (260 - 260)\right) * 0.5 * 0.00694$
OPEN TO BELOW (Non-living area)	68	$-\left((291.7 + 291.7) * (410.2 - 472.1) + (291.7 + 340.8) * (472.1 - 472.1) + (340.8 + 340.8) * (472.1 - 509.8) + (340.8 + 207.4) * (509.8 - 509.8) + (207.4 + 207.4) * (509.8 - 484.6) + (207.4 + 213.4) * (484.6 - 478.6) + (213.4 + 213.4) * (478.6 - 410.2) + (213.4 + 291.7) * (410.2 - 410.2)\right) * 0.5 * 0.00694$