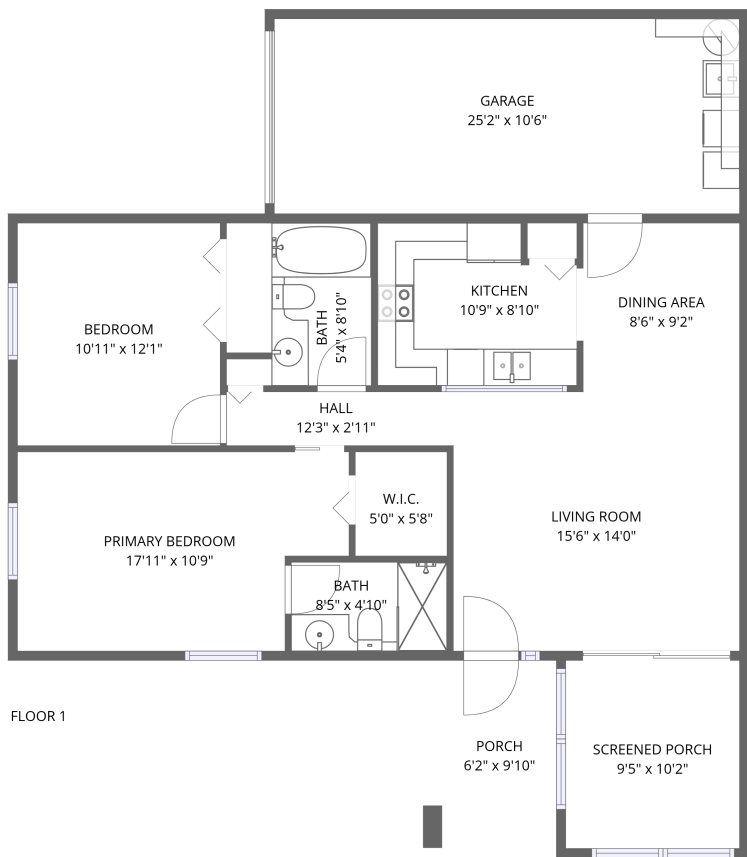


Home data report

8135 Bugle Court, Bayonet Point, Port Richey, Pasco County,  
Florida, United States, 34668, 3



Total Area: 902 sq. ft

Floor 1: 902 sq. ft

Excluded: Screened porch 96 sq. ft, Porch 60 sq. ft, Garage 265 sq. ft, Walls: 0 sq. ft

Property summary

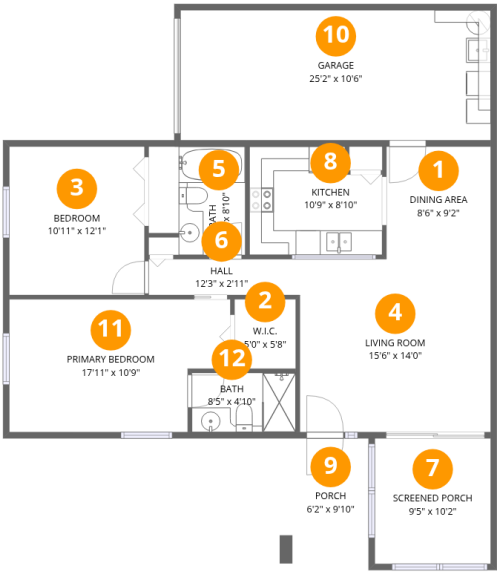
1 Floors

2 Bedrooms

2 Bathrooms

1 Garages

8135 Bugle Court, Bayonet Point, Port Richey, Pasco County,  
Florida, United States, 34668, 3



Room dimensions

Floor 1 Total:902sqft    Excluded: 421sqft

#		Dimensions	sqft	Counted as living area
1	Dining Area	8'6" x 9'2"	77 sq. ft	Yes
2	W.I.C.	5'0" x 5'8"	28 sq. ft	Yes
3	Bedroom	10'11" x 12'1"	132 sq. ft	Yes
4	Living Room	15'6" x 14'0"	217 sq. ft	Yes
5	Bath	5'4" x 8'10"	47 sq. ft	Yes
6	Hall	12'3" x 2'11"	36 sq. ft	Yes
7	Screened Porch	9'5" x 10'2"	96 sq. ft	No
8	Kitchen	10'9" x 8'10"	88 sq. ft	Yes
9	Porch	6'2" x 9'10"	60 sq. ft	No
10	Garage	25'2" x 10'6"	265 sq. ft	No
11	Primary Bedroom	17'11" x 10'9"	175 sq. ft	Yes

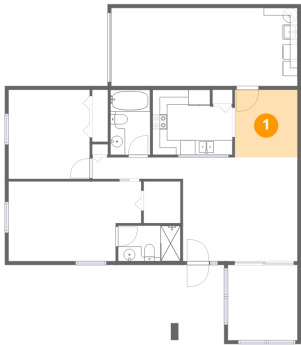
Home data report

8135 Bugle Court, Bayonet Point, Port Richey, Pasco County,  
Florida, United States, 34668, 3

#		Dimensions	sqft	Counted as living area
12	Bath	8'5" x 4'10"	41 sq. ft	Yes

8135 Bugle Court, Bayonet Point, Port Richey, Pasco County,  
Florida, United States, 34668, 3

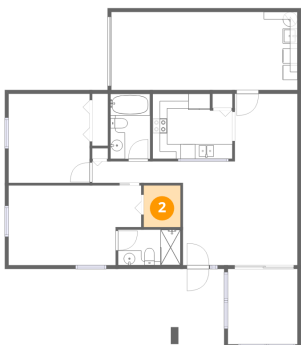
1 Floor 1 - Dining Area



Dimensions: 8'6" x 9'2"  
Area: 77 sq. ft  
Counted as living area: Yes

Heated: Yes  
Finished: Yes  
Enclosed: Yes  
Contiguous: Yes  
Permitted: Yes  
Wet space: No  
Addition: No  
Conversion: No

2 Floor 1 - W.I.C.

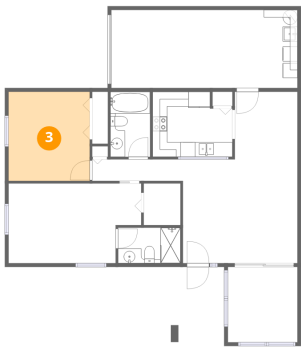


Dimensions: 5'0" x 5'8"  
Area: 28 sq. ft  
Counted as living area: Yes

Heated: Yes  
Finished: Yes  
Enclosed: Yes  
Contiguous: Yes  
Permitted: Yes  
Wet space: No  
Addition: No  
Conversion: No

8135 Bugle Court, Bayonet Point, Port Richey, Pasco County,  
Florida, United States, 34668, 3

3 Floor 1 - Bedroom



Dimensions: 10'11" x 12'1"  
Area: 132 sq. ft  
Counted as living area: Yes

Heated: Yes  
Finished: Yes  
Enclosed: Yes  
Contiguous: Yes  
Permitted: Yes  
Wet space: No  
Addition: No  
Conversion: No

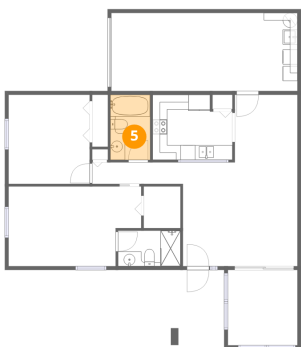
4 Floor 1 - Living Room



Dimensions: 15'6" x 14'0"  
Area: 217 sq. ft  
Counted as living area: Yes

Heated: Yes  
Finished: Yes  
Enclosed: Yes  
Contiguous: Yes  
Permitted: Yes  
Wet space: No  
Addition: No  
Conversion: No

5 Floor 1 - Bath

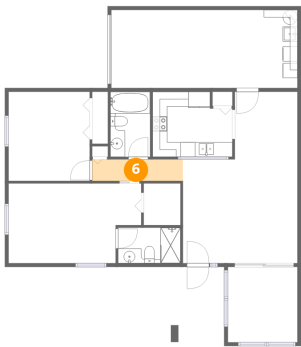


Dimensions: 5'4" x 8'10"  
Area: 47 sq. ft  
Counted as living area: Yes

Heated: Yes  
Finished: Yes  
Enclosed: Yes  
Contiguous: Yes  
Permitted: Yes  
Wet space: Yes  
Addition: No  
Conversion: No

8135 Bugle Court, Bayonet Point, Port Richey, Pasco County,  
Florida, United States, 34668, 3

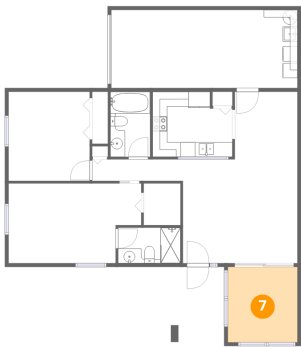
6 Floor 1 - Hall



Dimensions: 12'3" x 2'11"  
Area: 36 sq. ft  
Counted as living area: Yes

Heated: Yes  
Finished: Yes  
Enclosed: Yes  
Contiguous: Yes  
Permitted: Yes  
Wet space: No  
Addition: No  
Conversion: No

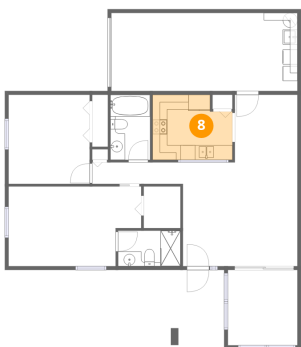
7 Floor 1 - Screened Porch



Dimensions: 9'5" x 10'2"  
Area: 96 sq. ft  
Counted as living area: No

Heated: No  
Finished: No  
Enclosed: No  
Contiguous: Yes  
Permitted: Yes  
Wet space: No  
Addition: No  
Conversion: No

8 Floor 1 - Kitchen

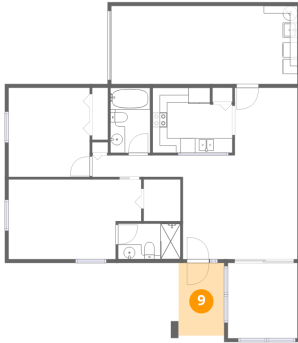


Dimensions: 10'9" x 8'10"  
Area: 88 sq. ft  
Counted as living area: Yes

Heated: Yes  
Finished: Yes  
Enclosed: Yes  
Contiguous: Yes  
Permitted: Yes  
Wet space: No  
Addition: No  
Conversion: No

8135 Bugle Court, Bayonet Point, Port Richey, Pasco County,  
Florida, United States, 34668, 3

## 9 Floor 1 - Porch



Dimensions: 6'2" x 9'10"  
Area: 60 sq. ft  
Counted as living area: No

Heated: No  
Finished: No  
Enclosed: No  
Contiguous: Yes  
Permitted: Yes  
Wet space: No  
Addition: No  
Conversion: No

## 10 Floor 1 - Garage



Dimensions: 25'2" x 10'6"  
Area: 265 sq. ft  
Counted as living area: No

Heated: No  
Finished: No  
Enclosed: Yes  
Contiguous: Yes  
Permitted: Yes  
Wet space: No  
Addition: No  
Conversion: No

## 11 Floor 1 - Primary Bedroom



Dimensions: 17'11" x 10'9"  
Area: 175 sq. ft  
Counted as living area: Yes

Heated: Yes  
Finished: Yes  
Enclosed: Yes  
Contiguous: Yes  
Permitted: Yes  
Wet space: No  
Addition: No  
Conversion: No

8135 Bugle Court, Bayonet Point, Port Richey, Pasco County,  
Florida, United States, 34668, 3

12 Floor 1 - Bath



Dimensions: 8'5" x 4'10"  
Area: 41 sq. ft  
Counted as living area: Yes

Heated: Yes  
Finished: Yes  
Enclosed: Yes  
Contiguous: Yes  
Permitted: Yes  
Wet space: Yes  
Addition: No  
Conversion: No