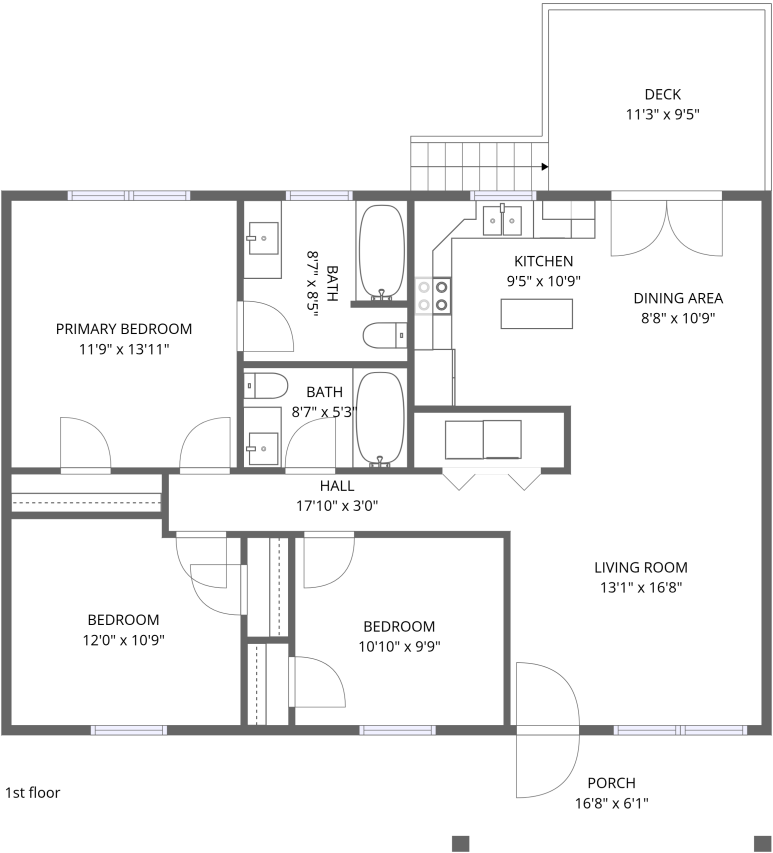


Home data report

2111 Woodland Road Southeast, Riverdale, Roanoke, Roanoke city, Virginia, United States, 24014




Total Area: 1071 sq. ft

1st Floor: 1071 sq. ft

Excluded: Porch 101 sq. ft, Deck 125 sq. ft, Walls: 68 sq. ft

Property summary

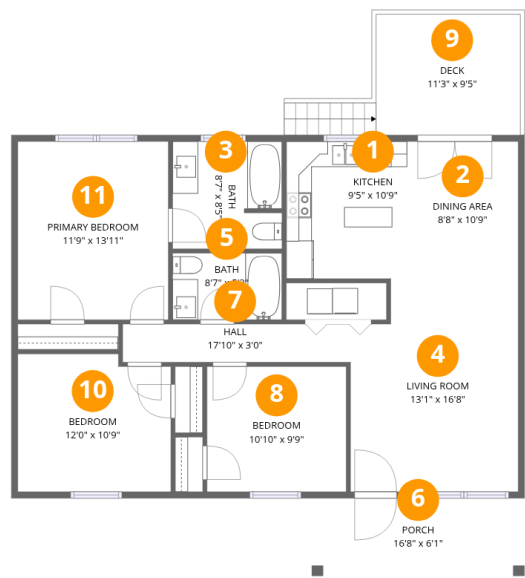
 1 Floors

 3 Bedrooms

 2 Bathrooms

Home data report

2111 Woodland Road Southeast, Riverdale, Roanoke, Roanoke city, Virginia, United States, 24014



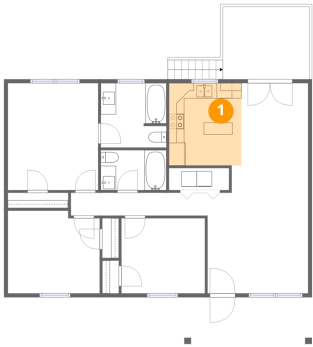
Room dimensions

Floor 1

Total:1071sqft    Excluded: 226sqft

#		Dimensions	sqft	Counted as living area
1	Kitchen	9'5" x 10'9"	101 sq. ft	Yes
2	Dining Area	8'8" x 10'9"	93 sq. ft	Yes
3	Bath	8'7" x 8'5"	72 sq. ft	Yes
4	Living Room	13'1" x 16'8"	218 sq. ft	Yes
5	Bath	8'7" x 5'3"	45 sq. ft	Yes
6	Porch	16'8" x 6'1"	101 sq. ft	No
7	Hall	17'10" x 3'0"	53 sq. ft	Yes
8	Bedroom	10'10" x 9'9"	106 sq. ft	Yes
9	Deck	11'3" x 9'5"	106 sq. ft	No
10	Bedroom	12'0" x 10'9"	129 sq. ft	Yes
11	Primary Bedroom	11'9" x 13'11"	164 sq. ft	Yes

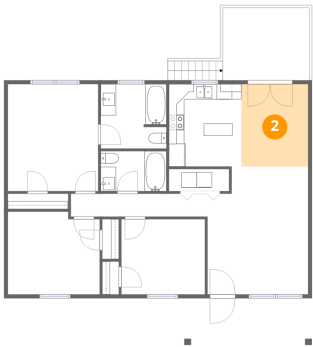
1 Floor 1 - Kitchen



Dimensions: 9'5" x 10'9"  
Area: 101 sq. ft  
Counted as living area: Yes

Heated: Yes  
Finished: Yes  
Enclosed: Yes  
Contiguous: Yes  
Permitted: Yes  
Wet space: No  
Addition: No  
Conversion: No

2 Floor 1 - Dining Area

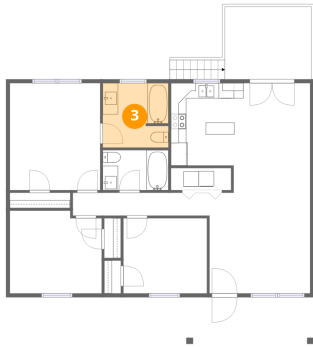


Dimensions: 8'8" x 10'9"  
Area: 93 sq. ft  
Counted as living area: Yes

Heated: Yes  
Finished: Yes  
Enclosed: Yes  
Contiguous: Yes  
Permitted: Yes  
Wet space: No  
Addition: No  
Conversion: No

2111 Woodland Road Southeast, Riverdale, Roanoke, Roanoke city, Virginia, United States, 24014

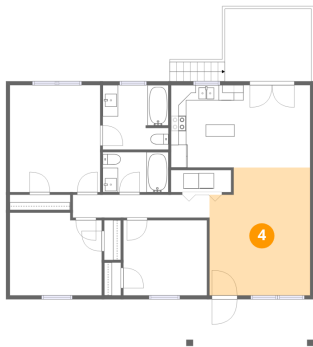
### 3 Floor 1 - Bath



Dimensions: 8'7" x 8'5"  
Area: 72 sq. ft  
Counted as living area: Yes

Heated: Yes  
Finished: Yes  
Enclosed: Yes  
Contiguous: Yes  
Permitted: Yes  
Wet space: Yes  
Addition: No  
Conversion: No

### 4 Floor 1 - Living Room



Dimensions: 13'1" x 16'8"  
Area: 218 sq. ft  
Counted as living area: Yes

Heated: Yes  
Finished: Yes  
Enclosed: Yes  
Contiguous: Yes  
Permitted: Yes  
Wet space: No  
Addition: No  
Conversion: No

### 5 Floor 1 - Bath



Dimensions: 8'7" x 5'3"  
Area: 45 sq. ft  
Counted as living area: Yes

Heated: Yes  
Finished: Yes  
Enclosed: Yes  
Contiguous: Yes  
Permitted: Yes  
Wet space: Yes  
Addition: No  
Conversion: No

2111 Woodland Road Southeast, Riverdale, Roanoke, Roanoke city, Virginia, United States, 24014

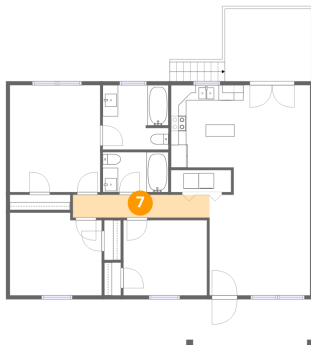
## 6 Floor 1 - Porch



Dimensions: 16'8" x 6'1"  
Area: 101 sq. ft  
Counted as living area: No

Heated: No  
Finished: No  
Enclosed: No  
Contiguous: Yes  
Permitted: Yes  
Wet space: No  
Addition: No  
Conversion: No

## 7 Floor 1 - Hall



Dimensions: 17'10" x 3'0"  
Area: 53 sq. ft  
Counted as living area: Yes

Heated: Yes  
Finished: Yes  
Enclosed: Yes  
Contiguous: Yes  
Permitted: Yes  
Wet space: No  
Addition: No  
Conversion: No

## 8 Floor 1 - Bedroom



Dimensions: 10'10" x 9'9"  
Area: 106 sq. ft  
Counted as living area: Yes

Heated: Yes  
Finished: Yes  
Enclosed: Yes  
Contiguous: Yes  
Permitted: Yes  
Wet space: No  
Addition: No  
Conversion: No

2111 Woodland Road Southeast, Riverdale, Roanoke, Roanoke city, Virginia, United States, 24014

## 9 Floor 1 - Deck



Dimensions: 11'3" x 9'5"  
Area: 106 sq. ft  
Counted as living area: No

Heated: No  
Finished: No  
Enclosed: No  
Contiguous: Yes  
Permitted: Yes  
Wet space: No  
Addition: No  
Conversion: No

## 10 Floor 1 - Bedroom



Dimensions: 12'0" x 10'9"  
Area: 129 sq. ft  
Counted as living area: Yes

Heated: Yes  
Finished: Yes  
Enclosed: Yes  
Contiguous: Yes  
Permitted: Yes  
Wet space: No  
Addition: No  
Conversion: No

## 11 Floor 1 - Primary Bedroom



Dimensions: 11'9" x 13'11"  
Area: 164 sq. ft  
Counted as living area: Yes

Heated: Yes  
Finished: Yes  
Enclosed: Yes  
Contiguous: Yes  
Permitted: Yes  
Wet space: No  
Addition: No  
Conversion: No