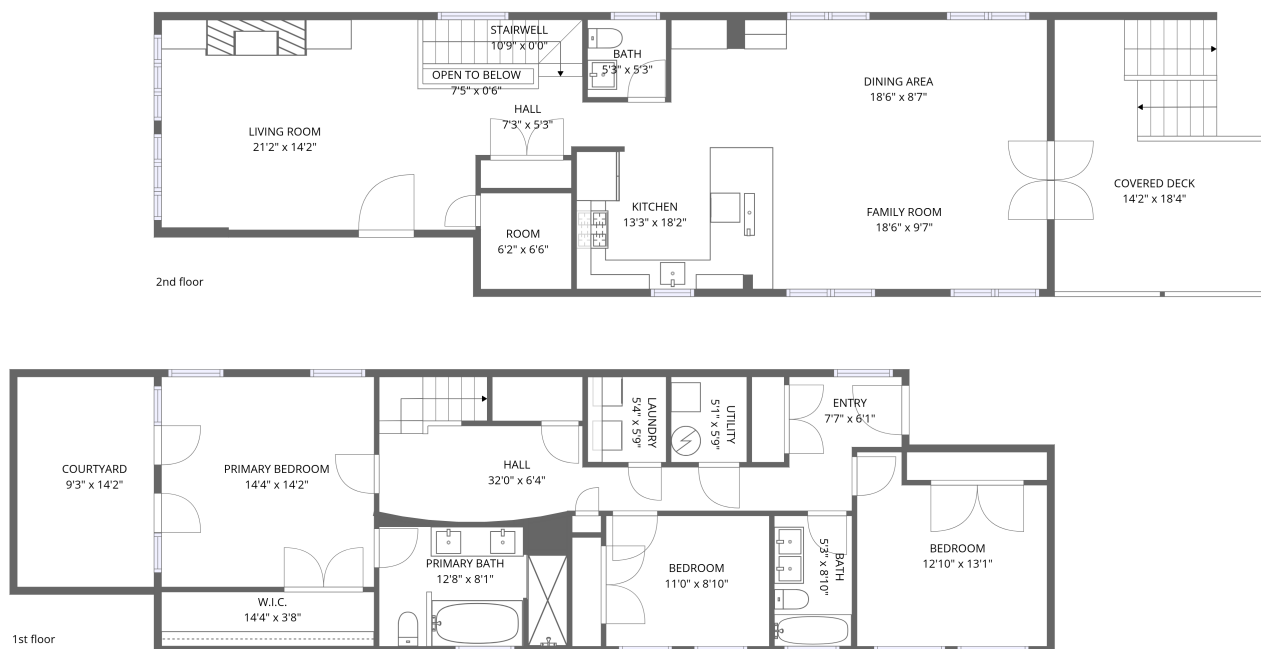


Home data report

1036 W Newport Ave, Chicago, IL, US



Total Area: 1995 sq. ft

1st Floor: 1039 sq. ft, 2nd Floor: 956 sq. ft

Excluded: Courtyard 131 sq. ft, Stairwell 45 sq. ft, Covered deck 232 sq. ft, Walls: 0 sq. ft

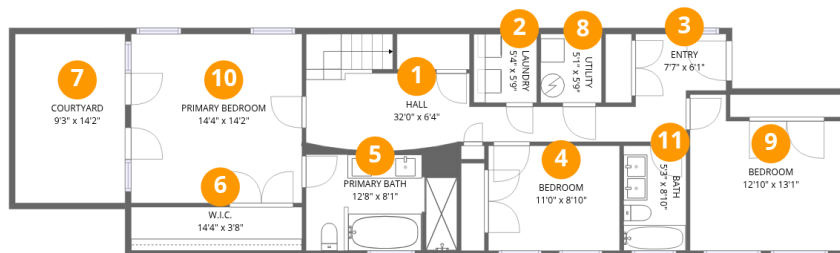
Property summary

 **2** Floors

 **3** Bedrooms

 **2** Bathrooms

 **1** Half baths

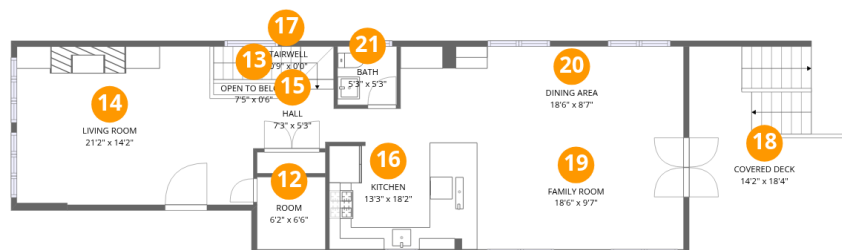


Room dimensions

Floor 1

Total:1039sqft Excluded: 131sqft

#		Dimensions	sqft	Counted as living area
1	Hall	32'0" x 6'4"	163 sq. ft	Yes
2	Laundry	5'4" x 5'9"	31 sq. ft	Yes
3	Entry	7'7" x 6'1"	42 sq. ft	Yes
4	Bedroom	11'0" x 8'10"	97 sq. ft	Yes
5	Primary Bath	12'8" x 8'1"	97 sq. ft	Yes
6	W.I.C.	14'4" x 3'8"	53 sq. ft	Yes
7	Courtyard	9'3" x 14'2"	131 sq. ft	No
8	Utility	5'1" x 5'9"	30 sq. ft	Yes
9	Bedroom	12'10" x 13'1"	147 sq. ft	Yes
10	Primary Bedroom	14'4" x 14'2"	204 sq. ft	Yes
11	Bath	5'3" x 8'10"	46 sq. ft	Yes



Room dimensions

Floor 2

Total: 956 sqft Excluded: 277 sqft

#		Dimensions	sqft	Counted as living area
12	Room	6'2" x 6'6"	40 sq. ft	Yes
13	Open To Below	7'5" x 0'6"	8 sq. ft	Yes
14	Living Room	21'2" x 14'2"	285 sq. ft	Yes
15	Hall	7'3" x 5'3"	36 sq. ft	Yes
16	Kitchen	13'3" x 18'2"	203 sq. ft	Yes
17	Stairwell	10'9" x 0'0"	37 sq. ft	No
18	Covered Deck	14'2" x 18'4"	232 sq. ft	No
19	Family Room	18'6" x 9'7"	177 sq. ft	Yes
20	Dining Area	18'6" x 8'7"	160 sq. ft	Yes
21	Bath	5'3" x 5'3"	28 sq. ft	Yes

1 Floor 1 - Hall



Dimensions: 32'0" x 6'4"
Area: 163 sq. ft
Counted as living area: Yes

Heated: Yes
Finished: Yes
Enclosed: Yes
Contiguous: Yes
Permitted: Yes
Wet space: No
Addition: No
Conversion: No

2 Floor 1 - Laundry



Dimensions: 5'4" x 5'9"
Area: 31 sq. ft
Counted as living area: Yes

Heated: Yes
Finished: Yes
Enclosed: Yes
Contiguous: Yes
Permitted: Yes
Wet space: No
Addition: No
Conversion: No

3 Floor 1 - Entry



Dimensions: 7'7" x 6'1"
Area: 42 sq. ft
Counted as living area: Yes

Heated: Yes
Finished: Yes
Enclosed: Yes
Contiguous: Yes
Permitted: Yes
Wet space: No
Addition: No
Conversion: No

4 Floor 1 - Bedroom



Dimensions: 11'0" x 8'10"
Area: 97 sq. ft
Counted as living area: Yes

Heated: Yes
Finished: Yes
Enclosed: Yes
Contiguous: Yes
Permitted: Yes
Wet space: No
Addition: No
Conversion: No

5 Floor 1 - Primary Bath



Dimensions: 12'8" x 8'1"
Area: 97 sq. ft
Counted as living area: Yes

Heated: Yes
Finished: Yes
Enclosed: Yes
Contiguous: Yes
Permitted: Yes
Wet space: Yes
Addition: No
Conversion: No

6 Floor 1 - W.I.C.



Dimensions: 14'4" x 3'8"
Area: 53 sq. ft
Counted as living area: Yes

Heated: Yes
Finished: Yes
Enclosed: Yes
Contiguous: Yes
Permitted: Yes
Wet space: No
Addition: No
Conversion: No

7 Floor 1 - Courtyard



Dimensions: 9'3" x 14'2"
Area: 131 sq. ft
Counted as living area: No

Heated: No
Finished: No
Enclosed: No
Contiguous: Yes
Permitted: No
Wet space: No
Addition: No
Conversion: No

8 Floor 1 - Utility



Dimensions: 5'1" x 5'9"
Area: 30 sq. ft
Counted as living area: Yes

Heated: Yes
Finished: Yes
Enclosed: Yes
Contiguous: Yes
Permitted: Yes
Wet space: No
Addition: No
Conversion: No

9 Floor 1 - Bedroom



Dimensions: 12'10" x 13'1"
Area: 147 sq. ft
Counted as living area: Yes

Heated: Yes
Finished: Yes
Enclosed: Yes
Contiguous: Yes
Permitted: Yes
Wet space: No
Addition: No
Conversion: No

10 Floor 1 - Primary Bedroom



Dimensions: 14'4" x 14'2"
Area: 204 sq. ft
Counted as living area: Yes

Heated: Yes
Finished: Yes
Enclosed: Yes
Contiguous: Yes
Permitted: Yes
Wet space: No
Addition: No
Conversion: No

11 Floor 1 - Bath



Dimensions: 5'3" x 8'10"
Area: 46 sq. ft
Counted as living area: Yes

Heated: Yes
Finished: Yes
Enclosed: Yes
Contiguous: Yes
Permitted: Yes
Wet space: Yes
Addition: No
Conversion: No

12 Floor 2 - Room



Dimensions: 6'2" x 6'6"
Area: 40 sq. ft
Counted as living area: Yes

Heated: Yes
Finished: Yes
Enclosed: Yes
Contiguous: Yes
Permitted: Yes
Wet space: No
Addition: No
Conversion: No

13 Floor 2 - Open To Below



Dimensions: 7'5" x 0'6"
Area: 8 sq. ft
Counted as living area: Yes

Heated: No
Finished: No
Enclosed: No
Contiguous: Yes
Permitted: No
Wet space: No
Addition: No
Conversion: No

14 Floor 2 - Living Room



Dimensions: 21'2" x 14'2"
Area: 285 sq. ft
Counted as living area: Yes

Heated: Yes
Finished: Yes
Enclosed: Yes
Contiguous: Yes
Permitted: Yes
Wet space: No
Addition: No
Conversion: No

15 Floor 2 - Hall



Dimensions: 7'3" x 5'3"
Area: 36 sq. ft
Counted as living area: Yes

Heated: Yes
Finished: Yes
Enclosed: Yes
Contiguous: Yes
Permitted: Yes
Wet space: No
Addition: No
Conversion: No

16 Floor 2 - Kitchen



Dimensions: 13'3" x 18'2"
Area: 203 sq. ft
Counted as living area: Yes

Heated: Yes
Finished: Yes
Enclosed: Yes
Contiguous: Yes
Permitted: Yes
Wet space: No
Addition: No
Conversion: No

17 Floor 2 - Stairwell



Dimensions: 10'9" x 0'0"
Area: 37 sq. ft
Counted as living area: No

Heated: No
Finished: No
Enclosed: No
Contiguous: Yes
Permitted: No
Wet space: No
Addition: No
Conversion: No

18 Floor 2 - Covered Deck



Dimensions: 14'2" x 18'4"
Area: 232 sq. ft
Counted as living area: No

Heated: No
Finished: No
Enclosed: No
Contiguous: Yes
Permitted: Yes
Wet space: No
Addition: No
Conversion: No

19 Floor 2 - Family Room



Dimensions: 18'6" x 9'7"
Area: 177 sq. ft
Counted as living area: Yes

Heated: Yes
Finished: Yes
Enclosed: Yes
Contiguous: Yes
Permitted: Yes
Wet space: No
Addition: No
Conversion: No

20 Floor 2 - Dining Area



Dimensions: 18'6" x 8'7"
Area: 160 sq. ft
Counted as living area: Yes

Heated: Yes
Finished: Yes
Enclosed: Yes
Contiguous: Yes
Permitted: Yes
Wet space: No
Addition: No
Conversion: No

21 Floor 2 - Bath



Dimensions: 5'3" x 5'3"
Area: 28 sq. ft
Counted as living area: Yes

Heated: Yes
Finished: Yes
Enclosed: Yes
Contiguous: Yes
Permitted: Yes
Wet space: Yes
Addition: No
Conversion: No