

Home data report

2203 Christine Drive, Canyon Creek, Granbury, Hood County, Texas, United States, 76048



Total Area: 1624 sq. ft

1st Floor: 1624 sq. ft

Excluded: Garage 416 sq. ft, Covered patio 81 sq. ft, Walls: 125 sq. ft

Property summary

 **1** Floors

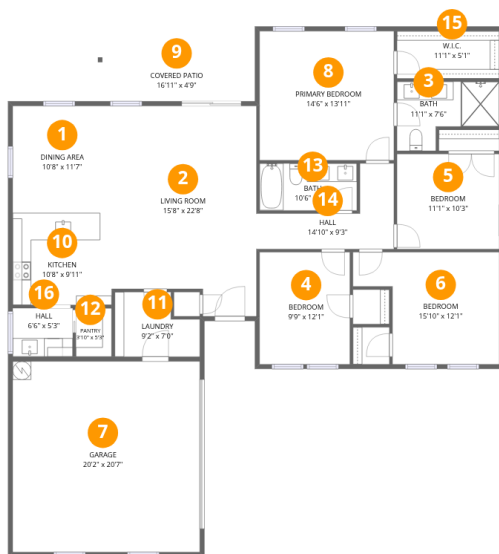
 **4** Bedrooms

 **2** Bathrooms

 **1** Garages

Home data report

2203 Christine Drive, Canyon Creek, Granbury, Hood County, Texas, United States, 76048



Room dimensions

Floor 1

Total:1624sqft Excluded: 497sqft

#		Dimensions	sqft	Counted as living area
1	Dining Area	10'8" x 11'7"	124 sq. ft	Yes
2	Living Room	15'8" x 22'8"	326 sq. ft	Yes
3	Bath	11'1" x 7'6"	65 sq. ft	Yes
4	Bedroom	9'9" x 12'1"	118 sq. ft	Yes
5	Bedroom	11'1" x 10'3"	113 sq. ft	Yes
6	Bedroom	15'10" x 12'1"	155 sq. ft	Yes
7	Garage	20'2" x 20'7"	416 sq. ft	No
8	Primary Bedroom	14'6" x 13'11"	202 sq. ft	Yes
9	Covered Patio	16'11" x 4'9"	81 sq. ft	No
10	Kitchen	10'8" x 9'11"	106 sq. ft	Yes
11	Laundry	9'2" x 7'0"	55 sq. ft	Yes

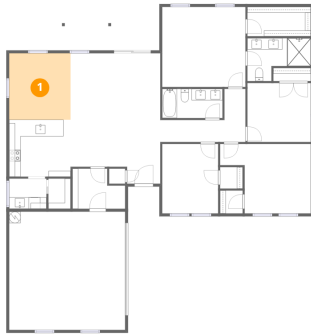
Home data report

**2203 Christine Drive, Canyon Creek, Granbury, Hood County,
Texas, United States, 76048**

#		Dimensions	sqft	Counted as living area
12	Pantry	3'10" x 5'3"	20 sq. ft	Yes
13	Bath	10'6" x 5'1"	53 sq. ft	Yes
14	Hall	14'10" x 9'3"	77 sq. ft	Yes
15	W.I.C.	11'1" x 5'1"	56 sq. ft	Yes
16	Hall	6'6" x 5'3"	34 sq. ft	Yes

2203 Christine Drive, Canyon Creek, Granbury, Hood County, Texas, United States, 76048

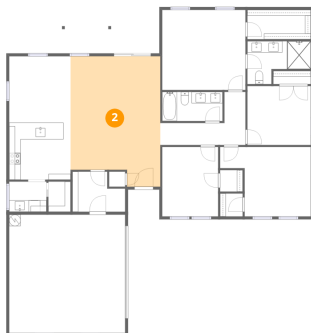
1 Floor 1 - Dining Area



Dimensions: 10'8" x 11'7"
Area: 124 sq. ft
Counted as living area: Yes

Heated: Yes
Finished: Yes
Enclosed: Yes
Contiguous: Yes
Permitted: Yes
Wet space: No
Addition: No
Conversion: No

2 Floor 1 - Living Room



Dimensions: 15'8" x 22'8"
Area: 326 sq. ft
Counted as living area: Yes

Heated: Yes
Finished: Yes
Enclosed: Yes
Contiguous: Yes
Permitted: Yes
Wet space: No
Addition: No
Conversion: No

3 Floor 1 - Bath



Dimensions: 11'1" x 7'6"
Area: 65 sq. ft
Counted as living area: Yes

Heated: Yes
Finished: Yes
Enclosed: Yes
Contiguous: Yes
Permitted: Yes
Wet space: Yes
Addition: No
Conversion: No

4 Floor 1 - Bedroom



Dimensions: 9'9" x 12'1"
Area: 118 sq. ft
Counted as living area: Yes

Heated: Yes
Finished: Yes
Enclosed: Yes
Contiguous: Yes
Permitted: Yes
Wet space: No
Addition: No
Conversion: No

5 Floor 1 - Bedroom



Dimensions: 11'1" x 10'3"
Area: 113 sq. ft
Counted as living area: Yes

Heated: Yes
Finished: Yes
Enclosed: Yes
Contiguous: Yes
Permitted: Yes
Wet space: No
Addition: No
Conversion: No

2203 Christine Drive, Canyon Creek, Granbury, Hood County, Texas, United States, 76048

6 Floor 1 - Bedroom



Dimensions: 15'10" x 12'1"
Area: 155 sq. ft
Counted as living area: Yes

Heated: Yes
Finished: Yes
Enclosed: Yes
Contiguous: Yes
Permitted: Yes
Wet space: No
Addition: No
Conversion: No

7 Floor 1 - Garage



Dimensions: 20'2" x 20'7"
Area: 416 sq. ft
Counted as living area: No

Heated: No
Finished: No
Enclosed: Yes
Contiguous: Yes
Permitted: Yes
Wet space: No
Addition: No
Conversion: No

8 Floor 1 - Primary Bedroom



Dimensions: 14'6" x 13'11"
Area: 202 sq. ft
Counted as living area: Yes

Heated: Yes
Finished: Yes
Enclosed: Yes
Contiguous: Yes
Permitted: Yes
Wet space: No
Addition: No
Conversion: No

9 Floor 1 - Covered Patio



Dimensions: 16'11" x 4'9"
Area: 81 sq. ft
Counted as living area: No

Heated: No
Finished: No
Enclosed: No
Contiguous: Yes
Permitted: Yes
Wet space: No
Addition: No
Conversion: No

10 Floor 1 - Kitchen



Dimensions: 10'8" x 9'11"
Area: 106 sq. ft
Counted as living area: Yes

Heated: Yes
Finished: Yes
Enclosed: Yes
Contiguous: Yes
Permitted: Yes
Wet space: No
Addition: No
Conversion: No

11 Floor 1 - Laundry



Dimensions: 9'2" x 7'0"
Area: 55 sq. ft
Counted as living area: Yes

Heated: Yes
Finished: Yes
Enclosed: Yes
Contiguous: Yes
Permitted: Yes
Wet space: No
Addition: No
Conversion: No

12 Floor 1 - Pantry



Dimensions: 3'10" x 5'3"
Area: 20 sq. ft
Counted as living area: Yes

Heated: Yes
Finished: Yes
Enclosed: Yes
Contiguous: Yes
Permitted: Yes
Wet space: No
Addition: No
Conversion: No

13 Floor 1 - Bath



Dimensions: 10'6" x 5'1"
Area: 53 sq. ft
Counted as living area: Yes

Heated: Yes
Finished: Yes
Enclosed: Yes
Contiguous: Yes
Permitted: Yes
Wet space: Yes
Addition: No
Conversion: No

14 Floor 1 - Hall

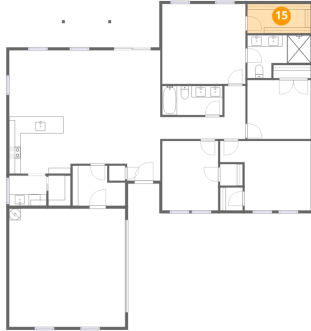


Dimensions: 14'10" x 9'3"
Area: 77 sq. ft
Counted as living area: Yes

Heated: Yes
Finished: Yes
Enclosed: Yes
Contiguous: Yes
Permitted: Yes
Wet space: No
Addition: No
Conversion: No

2203 Christine Drive, Canyon Creek, Granbury, Hood County, Texas, United States, 76048

15 Floor 1 - W.I.C.



Dimensions: 11'1" x 5'1"
Area: 56 sq. ft
Counted as living area: Yes

Heated: Yes
Finished: Yes
Enclosed: Yes
Contiguous: Yes
Permitted: Yes
Wet space: No
Addition: No
Conversion: No

16 Floor 1 - Hall



Dimensions: 6'6" x 5'3"
Area: 34 sq. ft
Counted as living area: Yes

Heated: Yes
Finished: Yes
Enclosed: Yes
Contiguous: Yes
Permitted: Yes
Wet space: No
Addition: No
Conversion: No