

Home report

156 Amberwood Lane, Great Cacapon, Morgan County, West Virginia, United States, 25422



Total Area: 1698 sq. ft

Floor 1: 934 sq. ft, Floor 2: 764 sq. ft

Excluded: Screened porch 111 sq. ft, Porch 343 sq. ft, Balcony 176 sq. ft, Storage 57 sq. ft, Open to below 258 sq. ft, Walls: 162 sq. ft

Property summary

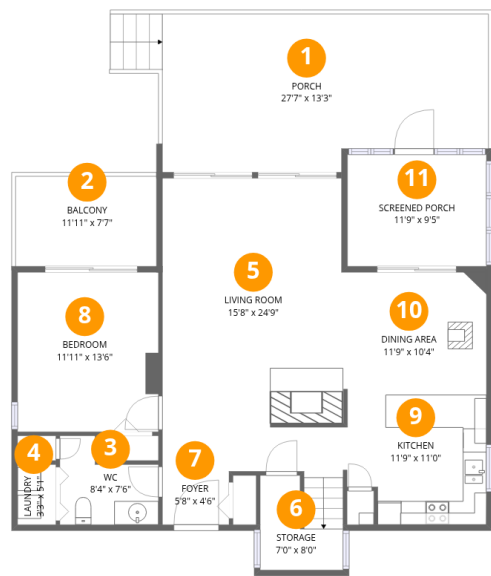
 **2** Floors

 **3** Bedrooms

 **1** Bathrooms

 **1** Half baths

156 Amberwood Lane, Great Cacapon, Morgan County, West Virginia, United States, 25422



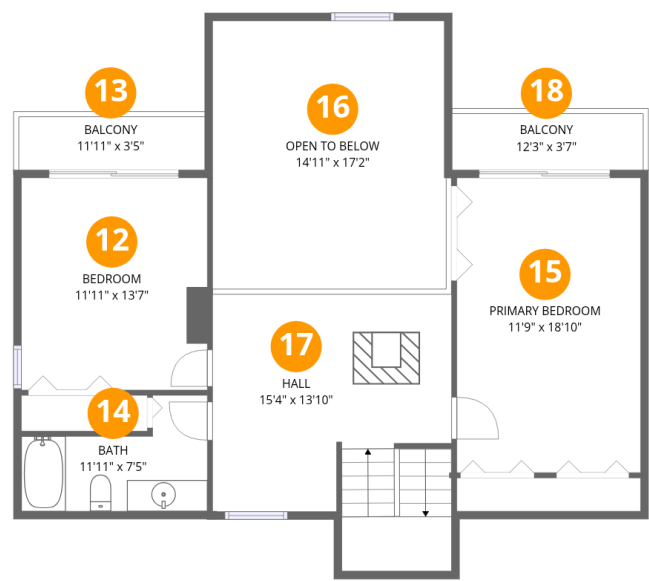
Room dimensions

Floor 1 Total:934sqft Excluded: 602sqft

#		Max Dimensions	sqft	Included
1	Porch	27'7" x 13'3"	343 sq. ft	No
2	Balcony	11'11" x 7'7"	91 sq. ft	No
3	WC	8'4" x 7'6"	50 sq. ft	Yes
4	Laundry	3'3" x 5'1"	16 sq. ft	Yes
5	Living Room	15'8" x 24'9"	383 sq. ft	Yes
6	Storage	7'0" x 8'0"	56 sq. ft	No
7	Foyer	5'8" x 4'6"	25 sq. ft	Yes
8	Bedroom	11'11" x 13'6"	161 sq. ft	Yes
9	Kitchen	11'9" x 11'0"	121 sq. ft	Yes
10	Dining Area	11'9" x 10'4"	122 sq. ft	Yes
11	Screened Porch	11'9" x 9'5"	111 sq. ft	No

Home report

156 Amberwood Lane, Great Cacapon, Morgan County, West Virginia, United States, 25422



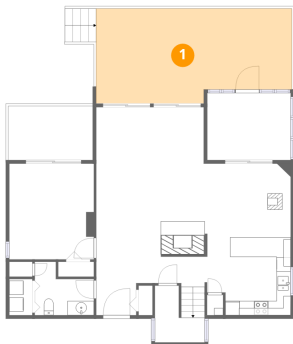
Room dimensions

Floor 2 Total:764sqft Excluded: 343sqft

#		Max Dimensions	sqft	Included
12	Bedroom	11'11" x 13'7"	162 sq. ft	Yes
13	Balcony	11'11" x 3'5"	41 sq. ft	No
14	Bath	11'11" x 7'5"	66 sq. ft	Yes
15	Primary Bedroom	11'9" x 18'10"	222 sq. ft	Yes
16	Open To Below	14'11" x 17'2"	258 sq. ft	No
17	Hall	15'4" x 13'10"	242 sq. ft	Yes
18	Balcony	12'3" x 3'7"	44 sq. ft	No

156 Amberwood Lane, Great Cacapon, Morgan County, West Virginia, United States, 25422

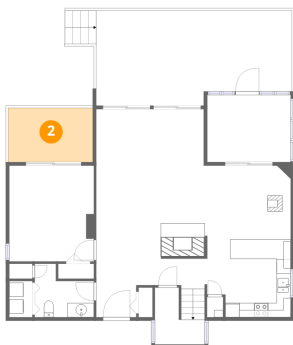
1 Floor 1 - Porch



Max Dimensions: 27'7" x 13'3"
Calculated Area: 343 sq. ft
Included: No

Heated: No
Finished: No
Enclosed: No
Contiguous: Yes
Permitted: Yes
Wet space: No
Addition: No
Conversion: No

2 Floor 1 - Balcony

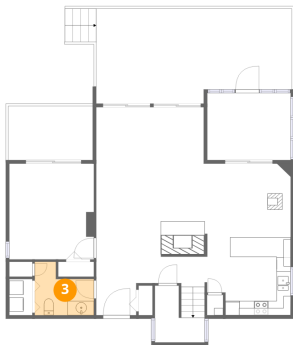


Max Dimensions: 11'11" x 7'7"
Calculated Area: 91 sq. ft
Included: No

Heated: No
Finished: No
Enclosed: No
Contiguous: Yes
Permitted: Yes
Wet space: No
Addition: No
Conversion: No

156 Amberwood Lane, Great Cacapon, Morgan County, West Virginia, United States, 25422

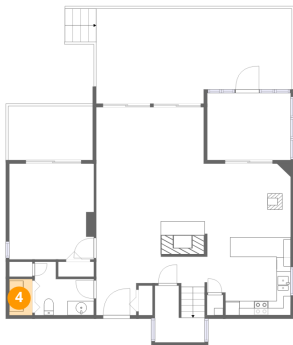
3 Floor 1 - WC



Max Dimensions: 8'4" x 7'6"
Calculated Area: 50 sq. ft
Included: Yes

Heated: Yes
Finished: Yes
Enclosed: Yes
Contiguous: Yes
Permitted: Yes
Wet space: Yes
Addition: No
Conversion: No

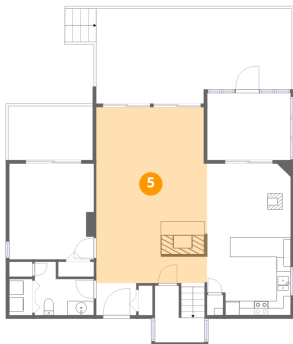
4 Floor 1 - Laundry



Max Dimensions: 3'3" x 5'1"
Calculated Area: 16 sq. ft
Included: Yes

Heated: Yes
Finished: Yes
Enclosed: Yes
Contiguous: Yes
Permitted: Yes
Wet space: No
Addition: No
Conversion: No

5 Floor 1 - Living Room

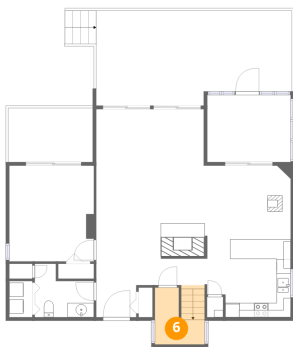


Max Dimensions: 15'8" x 24'9"
Calculated Area: 383 sq. ft
Included: Yes

Heated: Yes
Finished: Yes
Enclosed: Yes
Contiguous: Yes
Permitted: Yes
Wet space: No
Addition: No
Conversion: No

156 Amberwood Lane, Great Cacapon, Morgan County, West Virginia, United States, 25422

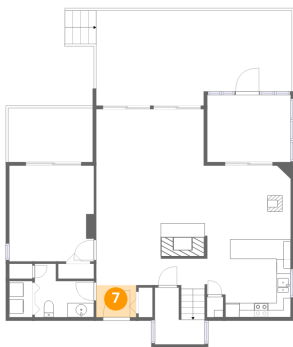
6 Floor 1 - Storage



Max Dimensions: 7'0" x 8'0"
Calculated Area: 56 sq. ft
Included: No

Heated: No
Finished: No
Enclosed: No
Contiguous: Yes
Permitted: Yes
Wet space: No
Addition: No
Conversion: No

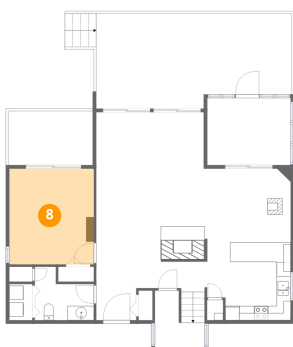
7 Floor 1 - Foyer



Max Dimensions: 5'8" x 4'6"
Calculated Area: 25 sq. ft
Included: Yes

Heated: Yes
Finished: Yes
Enclosed: Yes
Contiguous: Yes
Permitted: Yes
Wet space: No
Addition: No
Conversion: No

8 Floor 1 - Bedroom

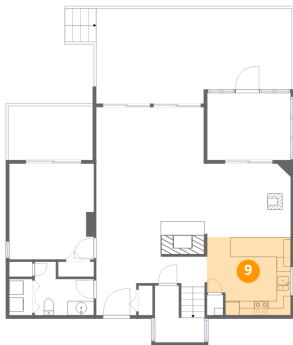


Max Dimensions: 11'11" x 13'6"
Calculated Area: 161 sq. ft
Included: Yes

Heated: Yes
Finished: Yes
Enclosed: Yes
Contiguous: Yes
Permitted: Yes
Wet space: No
Addition: No
Conversion: No

156 Amberwood Lane, Great Cacapon, Morgan County, West Virginia, United States, 25422

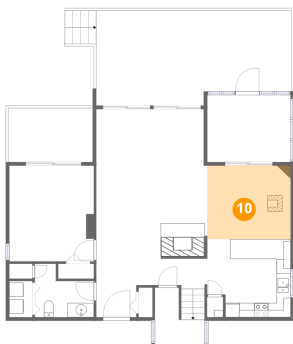
9 Floor 1 - Kitchen



Max Dimensions: 11'9" x 11'0"
Calculated Area: 121 sq. ft
Included: Yes

Heated: Yes
Finished: Yes
Enclosed: Yes
Contiguous: Yes
Permitted: Yes
Wet space: No
Addition: No
Conversion: No

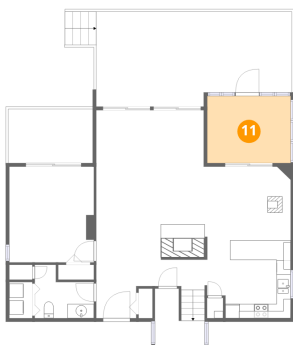
10 Floor 1 - Dining Area



Max Dimensions: 11'9" x 10'4"
Calculated Area: 122 sq. ft
Included: Yes

Heated: Yes
Finished: Yes
Enclosed: Yes
Contiguous: Yes
Permitted: Yes
Wet space: No
Addition: No
Conversion: No

11 Floor 1 - Screened Porch

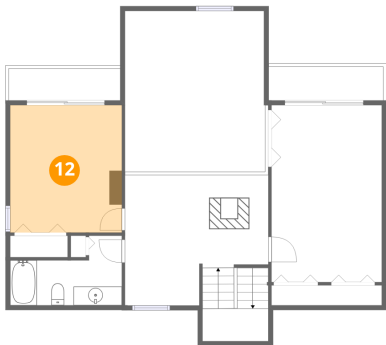


Max Dimensions: 11'9" x 9'5"
Calculated Area: 111 sq. ft
Included: No

Heated: No
Finished: No
Enclosed: No
Contiguous: Yes
Permitted: Yes
Wet space: No
Addition: No
Conversion: No

156 Amberwood Lane, Great Cacapon, Morgan County, West Virginia, United States, 25422

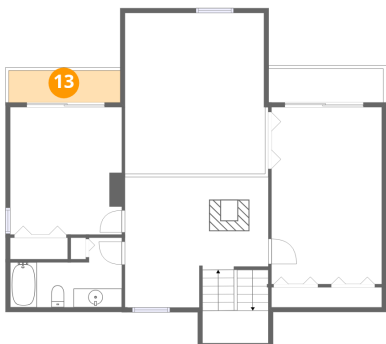
12 Floor 2 - Bedroom



Max Dimensions: 11'11" x 13'7"
Calculated Area: 162 sq. ft
Included: Yes

Heated: Yes
Finished: Yes
Enclosed: Yes
Contiguous: Yes
Permitted: Yes
Wet space: No
Addition: No
Conversion: No

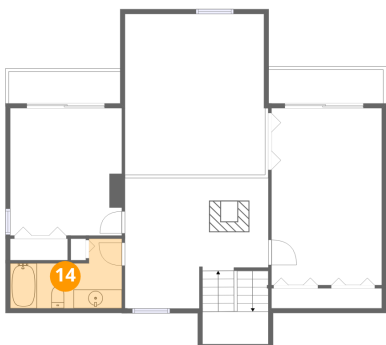
13 Floor 2 - Balcony



Max Dimensions: 11'11" x 3'5"
Calculated Area: 41 sq. ft
Included: No

Heated: No
Finished: No
Enclosed: No
Contiguous: Yes
Permitted: Yes
Wet space: No
Addition: No
Conversion: No

14 Floor 2 - Bath

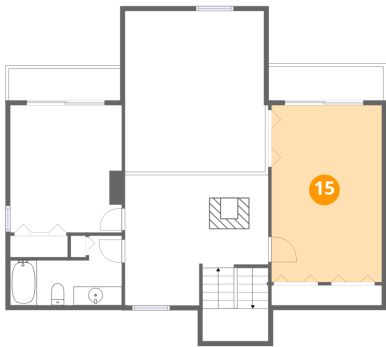


Max Dimensions: 11'11" x 7'5"
Calculated Area: 66 sq. ft
Included: Yes

Heated: Yes
Finished: Yes
Enclosed: Yes
Contiguous: Yes
Permitted: Yes
Wet space: Yes
Addition: No
Conversion: No

156 Amberwood Lane, Great Cacapon, Morgan County, West Virginia, United States, 25422

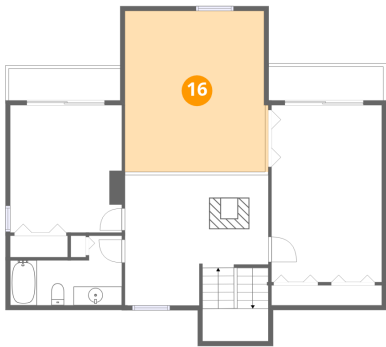
15 Floor 2 - Primary Bedroom



Max Dimensions: 11'9" x 18'10"
Calculated Area: 222 sq. ft
Included: Yes

Heated: Yes
Finished: Yes
Enclosed: Yes
Contiguous: Yes
Permitted: Yes
Wet space: No
Addition: No
Conversion: No

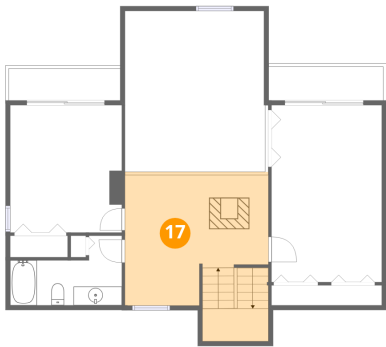
16 Floor 2 - Open To Below



Max Dimensions: 14'11" x 17'2"
Calculated Area: 258 sq. ft
Included: No

Heated: No
Finished: No
Enclosed: No
Contiguous: Yes
Permitted: No
Wet space: No
Addition: No
Conversion: No

17 Floor 2 - Hall

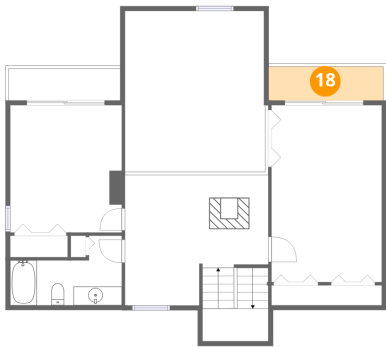


Max Dimensions: 15'4" x 13'10"
Calculated Area: 242 sq. ft
Included: Yes

Heated: Yes
Finished: Yes
Enclosed: Yes
Contiguous: Yes
Permitted: Yes
Wet space: No
Addition: No
Conversion: No

156 Amberwood Lane, Great Cacapon, Morgan County, West Virginia, United States, 25422

18 Floor 2 - Balcony



Max Dimensions: 12'3" x 3'7"
Calculated Area: 44 sq. ft
Included: No

Heated: No
Finished: No
Enclosed: No
Contiguous: Yes
Permitted: Yes
Wet space: No
Addition: No
Conversion: No