

308 41st Ave PI NW,Hickory,NC,US

Gross Living Area: 5055 sq. ft

Level 1

Space	Area (sq. ft)	Calculation <small>Coordinate Polygon Area Algorithm using inches</small>
FIREPLACE (Non-living area)	12	$-((18.3 + 18.3) * (240.5 - 316.1) + (18.3 + -5.1) * (316.1 - 316.1) + (-5.1 + -5.1) * (316.1 - 240.5) + (-5.1 + 18.3) * (240.5 - 240.5)) * 0.5 * 0.00694$

308 41st Ave PI NW,Hickory,NC,US

Gross Living Area: 5055 sq. ft

Level 2



Space	Area (sq. ft)	Calculation
2nd floor (Living area)	2413	Coordinate Polygon Area Algorithm using inches $ \begin{aligned} & -((212.6 + 212.6) * (0.7 - 66.8) + (212.6 + 405.5) * (66.8 - 66.8) + (405.5 + 405.5) * (66.8 - 164.8) \\ & + (405.5 + 517.7) * (164.8 - 164.8) + (517.7 + 517.7) * (164.8 - 146) + (517.7 + 663) * (146 - 146) \\ & + (663 + 663) * (146 - 164.8) + (663 + 708.3) * (164.8 - 164.8) + (708.3 + 708.3) * (164.8 - 552.3) \\ & + (708.3 + 663) * (552.3 - 552.3) + (663 + 663) * (552.3 - 575.1) + (663 + 527.9) * (575.1 - 575.1) \\ & + (527.9 + 527.9) * (575.1 - 552.3) + (527.9 + 477.6) * (552.3 - 552.3) + (477.6 + 477.6) * (552.3 - \\ & 575.1) + (477.6 + 320.1) * (575.1 - 575.1) + (320.1 + 320.1) * (575.1 - 552.3) + (320.1 + 164.6) * \\ & (552.3 - 552.3) + (164.6 + 164.6) * (552.3 - 602.9) + (164.6 + 129.7) * (602.9 - 637.4) + (129.7 + \\ & 39.5) * (637.4 - 637.4) + (39.5 + 4.6) * (637.4 - 602.9) + (4.6 + 4.6) * (602.9 - 0.7) + (4.6 + 212.6) \\ & * (0.7 - 0.7)) * 0.5 * 0.00694 \end{aligned} $

308 41st Ave PI NW,Hickory,NC,US

Gross Living Area: 5055 sq. ft

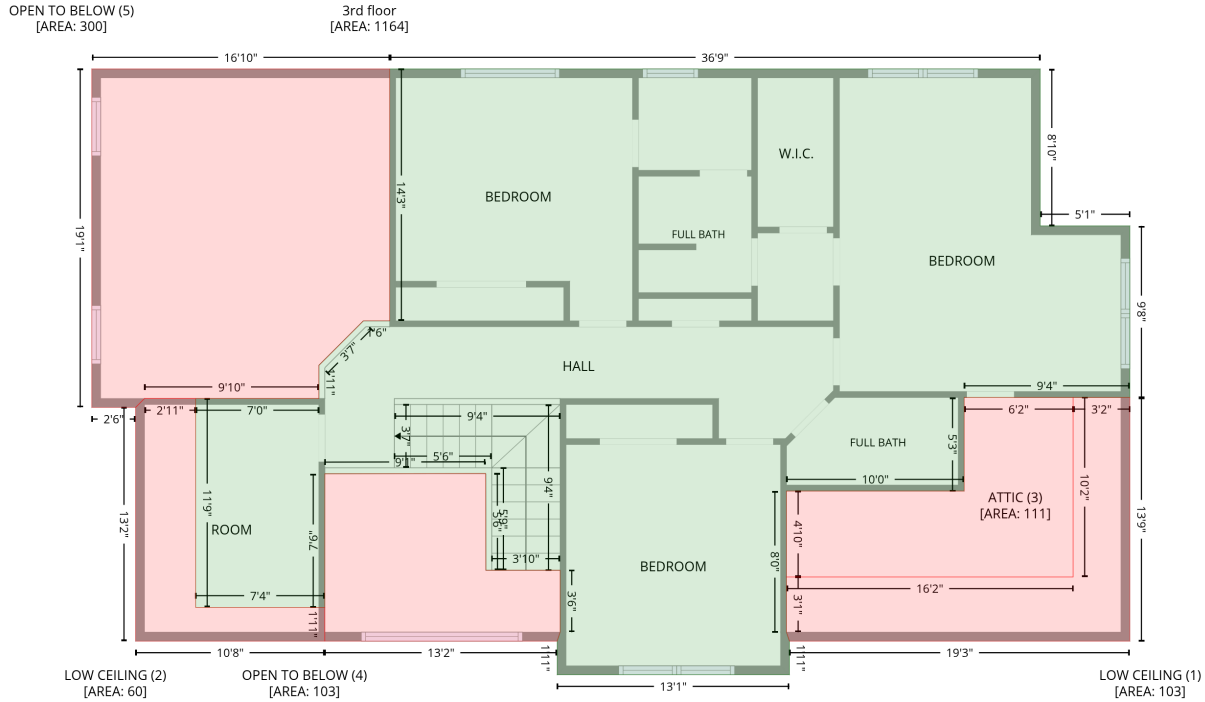
Level 2

Space	Area (sq. ft)	Calculation <small>Coordinate Polygon Area Algorithm using inches</small>
FIREPLACE (Non-living area)	11	$-\left((4.6 + 4.6) * (240.5 - 316.1) + (4.6 + -16.1) * (316.1 - 316.1) + (-16.1 + -16.1) * (316.1 - 240.5) + (-16.1 + 4.6) * (240.5 - 240.5)\right) * 0.5 * 0.00694$

308 41st Ave PI NW,Hickory,NC,US

Gross Living Area: 5055 sq. ft

Level 3



Space	Area (sq. ft)	Calculation
3rd floor (Living area)	1164	$-\left((647.5 + 647.5) * (164.8 - 271.1) + (647.5 + 708.3) * (271.1 - 271.1) + (708.3 + 708.3) * (271.1 - 387.3) + (708.3 + 596) * (387.3 - 387.3) + (596 + 596) * (387.3 - 450.7) + (596 + 475.6) * (450.7 - 450.7) + (475.6 + 475.6) * (450.7 - 546.3) + (475.6 + 477.6) * (546.3 - 552.3) + (477.6 + 477.6) * (552.3 - 575.1) + (477.6 + 320.1) * (575.1 - 575.1) + (320.1 + 320.1) * (575.1 - 552.3) + (320.1 + 322.1) * (552.3 - 546.3) + (322.1 + 322.1) * (546.3 - 504.3) + (322.1 + 271.8) * (504.3 - 504.3) + (271.8 + 271.6) * (504.3 - 438.8) + (271.6 + 162.6) * (438.8 - 439) + (162.6 + 162.6) * (439 - 529.4) + (162.6 + 75) * (529.4 - 529.4) + (75 + 75) * (529.4 - 388.1) + (75 + 158.6) * (388.1 - 388.1) + (158.6 + 158.6) * (388.1 - 365.5) + (158.6 + 188.7) * (365.5 - 335.4) + (188.7 + 206.6) * (335.4 - 335.4) + (206.6 + 206.6) * (335.4 - 164.8) + (206.6 + 647.5) * (164.8 - 164.8) * 0.5 * 0.00694$
LOW CEILING (Non-living area)	103	$-\left((708.3 + 708.3) * (387.3 - 552.3) + (708.3 + 477.6) * (552.3 - 552.3) + (477.6 + 475.6) * (552.3 - 546.3) + (475.6 + 475.6) * (546.3 - 508.9) + (475.6 + 669.8) * (508.9 - 508.9) + (669.8 + 669.8) * (508.9 - 387.3) + (669.8 + 708.3) * (387.3 - 387.3) * 0.5 * 0.00694$
LOW CEILING (Non-living area)	60	$-\left((75 + 75) * (388.1 - 529.4) + (75 + 162.6) * (529.4 - 529.4) + (162.6 + 162.6) * (529.4 - 552.3) + (162.6 + 34.3) * (552.3 - 552.3) + (34.3 + 34.3) * (552.3 - 394.1) + (34.3 + 40.3) * (394.1 - 388.1) + (40.3 + 75) * (388.1 - 388.1) * 0.5 * 0.00694$
ATTIC (Non-living area)	111	$-\left((669.8 + 669.8) * (387.3 - 508.9) + (669.8 + 475.6) * (508.9 - 508.9) + (475.6 + 475.6) * (508.9 - 450.7) + (475.6 + 596) * (450.7 - 450.7) + (596 + 596) * (450.7 - 387.3) + (596 + 669.8) * (387.3 - 387.3) * 0.5 * 0.00694$
OPEN TO BELOW (Non-living area)	103	$-\left((271.6 + 271.8) * (438.8 - 504.3) + (271.8 + 322.1) * (504.3 - 504.3) + (322.1 + 322.1) * (504.3 - 546.3) + (322.1 + 320.1) * (546.3 - 552.3) + (320.1 + 162.6) * (552.3 - 552.3) + (162.6 + 162.6) * (552.3 - 529.4) + (162.6 + 162.6) * (529.4 - 439) + (162.6 + 271.6) * (439 - 438.8) * 0.5 * 0.00694$

308 41st Ave PI NW,Hickory,NC,US

Gross Living Area: 5055 sq. ft

Level 3

Space	Area (sq. ft)	Calculation <small>Coordinate Polygon Area Algorithm using inches</small>
OPEN TO BELOW (Non-living area)	300	$\begin{aligned} & -((206.6 + 206.6) * (164.8 - 335.4) + (206.6 + 188.7) * (335.4 - 335.4) + (188.7 + 158.6) * (335.4 - \\ & 365.5) + (158.6 + 158.6) * (365.5 - 388.1) + (158.6 + 40.3) * (388.1 - 388.1) + (40.3 + 34.3) * \\ & (388.1 - 394.1) + (34.3 + 4.6) * (394.1 - 394.1) + (4.6 + 4.6) * (394.1 - 164.8) + (4.6 + 206.6) * \\ & (164.8 - 164.8)) * 0.5 * 0.00694 \end{aligned}$