

# 7711 Northern Estates Pt, Greensboro, Guilford County, North Carolina, United States, 27455

Gross Living Area: 3851 sq. ft

## Level 1

1st floor  
[AREA: 2346]



Space	Area (sq. ft)	Calculation
1st floor (Living area)	2346	Coordinate Polygon Area Algorithm using inches $-((769.7 + 769.7) * (53.4 - 636.6) + (769.7 + 553.8) * (636.6 - 636.6) + (553.8 + 553.8) * (636.6 - 565) + (553.8 + 315) * (565 - 565) + (315 + 315) * (565 - 559) + (315 + 309) * (559 - 559) + (309 + 309) * (559 - 369.3) + (309 + 162.5) * (369.3 - 369.3) + (162.5 + 162.5) * (369.3 - 345.3) + (162.5 + 23.9) * (345.3 - 345.3) + (23.9 + 23.9) * (345.3 - 53.4) + (23.9 + 769.7) * (53.4 - 53.4)) * 0.5 * 0.00694$

# 7711 Northern Estates Pt, Greensboro, Guilford County, North Carolina, United States, 27455

Gross Living Area: 3851 sq. ft

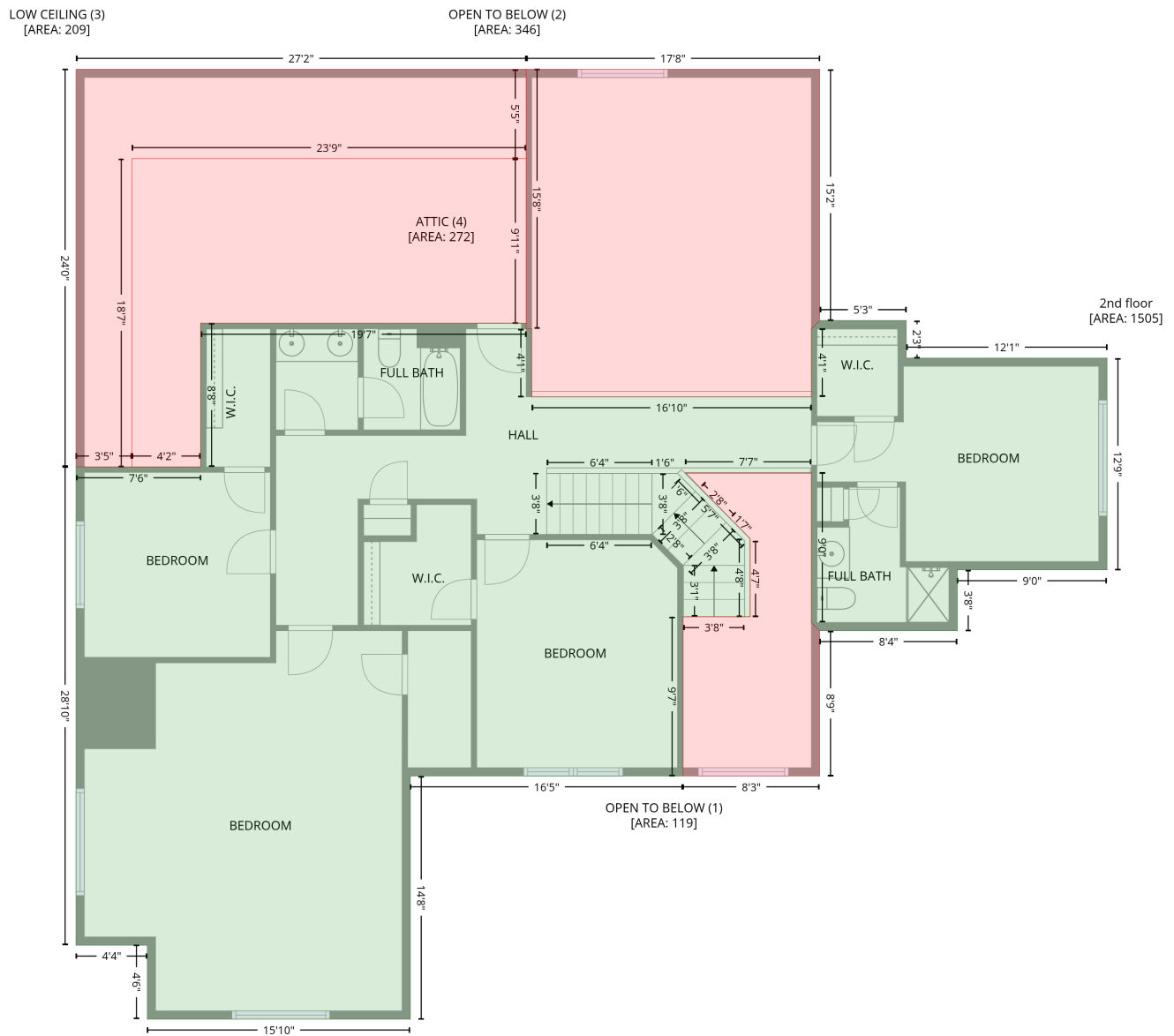
## Level 1

Space	Area (sq. ft)	Calculation <small>Coordinate Polygon Area Algorithm using inches</small>
GARAGE (Non-living area)	766	$\begin{aligned} & -((162.5 + 162.5) * (345.3 - 369.3) + (162.5 + 309) * (369.3 - 369.3) + (309 + 309) * (369.3 - 559) \\ & + (309 + 315) * (559 - 559) + (315 + 315) * (559 - 740.9) + (315 + 23.9) * (740.9 - 740.9) + (23.9 \\ & + 23.9) * (740.9 - 345.3) + (23.9 + 162.5) * (345.3 - 345.3)) * 0.5 * 0.00694 \end{aligned}$

# 7711 Northern Estates Pt, Greensboro, Guilford County, North Carolina, United States, 27455

Gross Living Area: 3851 sq. ft

## Level 2



# 7711 Northern Estates Pt, Greensboro, Guilford County, North Carolina, United States, 27455

Gross Living Area: 3851 sq. ft

## Level 2

Space	Area (sq. ft)	Calculation <small>Coordinate Polygon Area Algorithm using inches</small>
2nd floor (Living area)	1505	$-\left((624.4 + 624.4) * (235.3 - 262.5) + (624.4 + 769.7) * (262.5 - 262.5) + (769.7 + 769.7) * (262.5 - 415.7) + (769.7 + 661.4) * (415.7 - 415.7) + (661.4 + 661.4) * (415.7 - 459.8) + (661.4 + 561.8) * (459.8 - 459.8) + (561.8 + 555.8) * (459.8 - 453.8) + (555.8 + 555.8) * (453.8 - 453.8) + (555.8 + 555.8) * (453.8 - 345.4) + (555.8 + 464.7) * (345.4 - 345.4) + (464.7 + 511.5) * (345.4 - 393.2) + (511.5 + 511.5) * (393.2 - 449.6) + (511.5 + 463) * (449.6 - 449.6) + (463 + 463) * (449.6 - 565) + (463 + 265.7) * (565 - 565) + (265.7 + 265.7) * (565 - 740.9) + (265.7 + 75.5) * (740.9 - 740.9) + (75.5 + 75.5) * (740.9 - 687.4) + (75.5 + 23.9) * (687.4 - 687.4) + (23.9 + 23.9) * (687.4 - 341.3) + (23.9 + 114.1) * (341.3 - 341.3) + (114.1 + 114.1) * (341.3 - 237.3) + (114.1 + 349.5) * (237.3 - 237.3) + (349.5 + 349.5) * (237.3 - 241.3) + (349.5 + 353.5) * (241.3 - 241.3) + (353.5 + 353.5) * (241.3 - 290.6) + (353.5 + 555.8) * (290.6 - 290.6) + (555.8 + 555.8) * (290.6 - 241.3) + (555.8 + 555.8) * (241.3 - 241.3) + (555.8 + 561.8) * (241.3 - 235.3) + (561.8 + 624.4) * (235.3 - 235.3)\right) * 0.5 * 0.00694$
OPEN TO BELOW (Non-living area)	119	$-\left((555.8 + 555.8) * (345.4 - 453.9) + (555.8 + 561.8) * (453.9 - 459.8) + (561.8 + 561.8) * (459.8 - 565) + (561.8 + 463) * (565 - 565) + (463 + 463) * (565 - 449.6) + (463 + 511.5) * (449.6 - 449.6) + (511.5 + 511.5) * (449.6 - 393.2) + (511.5 + 464.7) * (393.2 - 345.4) + (464.7 + 555.8) * (345.4 - 345.4)\right) * 0.5 * 0.00694$
OPEN TO BELOW (Non-living area)	346	$-\left((561.8 + 561.8) * (53.4 - 235.3) + (561.8 + 555.8) * (235.3 - 241.3) + (555.8 + 555.8) * (241.3 - 290.6) + (555.8 + 353.5) * (290.6 - 290.6) + (353.5 + 353.5) * (290.6 - 241.3) + (353.5 + 349.5) * (241.3 - 241.3) + (349.5 + 349.5) * (241.3 - 53.4) + (349.5 + 561.8) * (53.4 - 53.4)\right) * 0.5 * 0.00694$
LOW CEILING (Non-living area)	209	$-\left((349.5 + 349.5) * (53.4 - 118.1) + (349.5 + 64.5) * (118.1 - 118.1) + (64.5 + 64.5) * (118.1 - 341.3) + (64.5 + 23.9) * (341.3 - 341.3) + (23.9 + 23.9) * (341.3 - 53.4) + (23.9 + 349.5) * (53.4 - 53.4)\right) * 0.5 * 0.00694$
ATTIC (Non-living area)	272	$-\left((349.5 + 349.5) * (118.1 - 237.3) + (349.5 + 114.1) * (237.3 - 237.3) + (114.1 + 114.1) * (237.3 - 341.3) + (114.1 + 64.5) * (341.3 - 341.3) + (64.5 + 64.5) * (341.3 - 118.1) + (64.5 + 349.5) * (118.1 - 118.1)\right) * 0.5 * 0.00694$