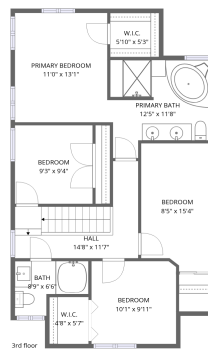
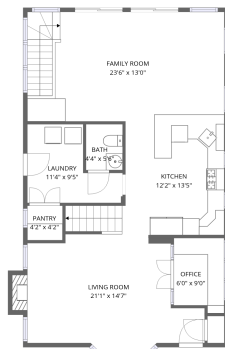


Home data report

4947 Estes Ave, Skokie, IL, US



DECK
27'3\"/>




Total Area: 2030 sq. ft

1st Floor: 232 sq. ft, 2nd Floor: 938 sq. ft, 3rd Floor: 860 sq. ft

Excluded: Undefined 10 sq. ft, Garage 429 sq. ft, Deck 530 sq. ft, Fireplace 9 sq. ft, Walls: 210 sq. ft

Property summary

 **3** Floors

 **4** Bedrooms

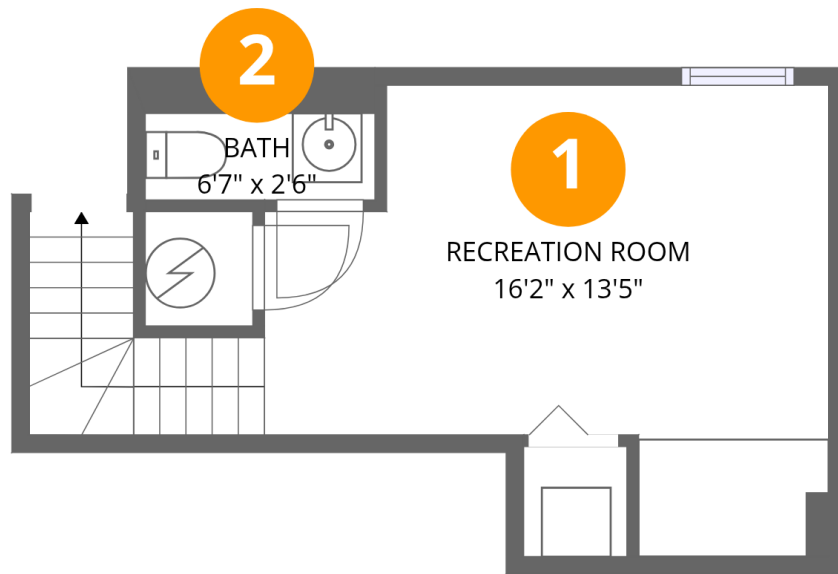
 **2** Bathrooms

Home data report

4947 Estes Ave, Skokie, IL, US

 **2**
Half baths

 **1**
Garages



Room dimensions

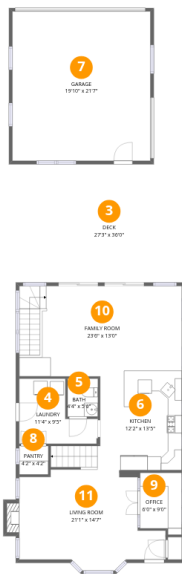
Floor 1

Total:232sqft Excluded: 10sqft

#		Dimensions	sqft	Counted as living area
1	Recreation Room	16'2" x 13'5"	197 sq. ft	Yes
2	Bath	6'7" x 2'6"	16 sq. ft	Yes

Home data report

4947 Estes Ave, Skokie, IL, US

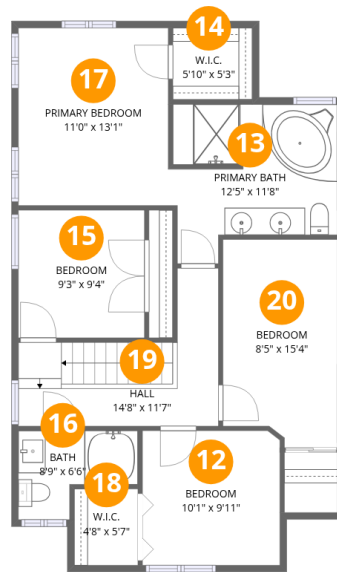


Room dimensions

Floor 2

Total:938sqft Excluded: 968sqft

#		Dimensions	sqft	Counted as living area
3	Deck	27'3" x 36'0"	530 sq. ft	No
4	Laundry	11'4" x 9'5"	79 sq. ft	Yes
5	Bath	4'4" x 5'6"	24 sq. ft	Yes
6	Kitchen	12'2" x 13'5"	189 sq. ft	Yes
7	Garage	19'10" x 21'7"	429 sq. ft	No
8	Pantry	4'2" x 4'2"	17 sq. ft	Yes
9	Office	6'0" x 9'0"	50 sq. ft	Yes
10	Family Room	23'6" x 13'0"	299 sq. ft	Yes
11	Living Room	21'1" x 14'7"	250 sq. ft	Yes



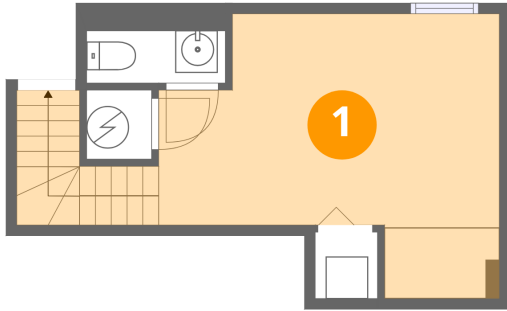
Room dimensions

Floor 3

Total:860sqft Excluded: 0sqft

#		Dimensions	sqft	Counted as living area
12	Bedroom	10'1" x 9'11"	99 sq. ft	Yes
13	Primary Bath	12'5" x 11'8"	121 sq. ft	Yes
14	W.I.C.	5'10" x 5'3"	31 sq. ft	Yes
15	Bedroom	9'3" x 9'4"	87 sq. ft	Yes
16	Bath	8'9" x 6'6"	44 sq. ft	Yes
17	Primary Bedroom	11'0" x 13'1"	144 sq. ft	Yes
18	W.I.C.	4'8" x 5'7"	26 sq. ft	Yes
19	Hall	14'8" x 11'7"	107 sq. ft	Yes
20	Bedroom	8'5" x 15'4"	122 sq. ft	Yes

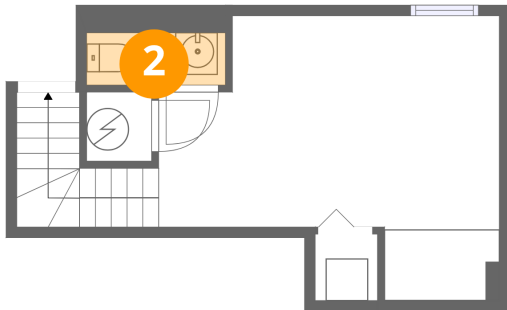
1 Floor 1 - Recreation Room



Dimensions: 16'2" x 13'5"
Area: 197 sq. ft
Counted as living area: Yes

Heated: Yes
Finished: Yes
Enclosed: Yes
Contiguous: Yes
Permitted: Yes
Wet space: No
Addition: No
Conversion: No

2 Floor 1 - Bath



Dimensions: 6'7" x 2'6"
Area: 16 sq. ft
Counted as living area: Yes

Heated: Yes
Finished: Yes
Enclosed: Yes
Contiguous: Yes
Permitted: Yes
Wet space: No
Addition: No
Conversion: No

3 Floor 2 - Deck



Dimensions: 27'3" x 36'0"
Area: 530 sq. ft
Counted as living area: No

Heated: No
Finished: No
Enclosed: No
Contiguous: Yes
Permitted: Yes
Wet space: No
Addition: No
Conversion: No

4 Floor 2 - Laundry



Dimensions: 11'4" x 9'5"
Area: 79 sq. ft
Counted as living area: Yes

Heated: Yes
Finished: Yes
Enclosed: Yes
Contiguous: Yes
Permitted: Yes
Wet space: No
Addition: No
Conversion: No

5 Floor 2 - Bath



Dimensions: 4'4" x 5'6"
Area: 24 sq. ft
Counted as living area: Yes

Heated: Yes
Finished: Yes
Enclosed: Yes
Contiguous: Yes
Permitted: Yes
Wet space: Yes
Addition: No
Conversion: No

6 Floor 2 - Kitchen



Dimensions: 12'2" x 13'5"
Area: 189 sq. ft
Counted as living area: Yes

Heated: Yes
Finished: Yes
Enclosed: Yes
Contiguous: Yes
Permitted: Yes
Wet space: No
Addition: No
Conversion: No



7 Floor 2 - Garage



Dimensions: 19'10" x 21'7"
Area: 429 sq. ft
Counted as living area: No

Heated: No
Finished: No
Enclosed: Yes
Contiguous: Yes
Permitted: Yes
Wet space: No
Addition: No
Conversion: No



8 Floor 2 - Pantry



Dimensions: 4'2" x 4'2"
Area: 17 sq. ft
Counted as living area: Yes

Heated: Yes
Finished: Yes
Enclosed: Yes
Contiguous: Yes
Permitted: Yes
Wet space: No
Addition: No
Conversion: No



9 Floor 2 - Office



Dimensions: 6'0" x 9'0"
Area: 50 sq. ft
Counted as living area: Yes

Heated: Yes
Finished: Yes
Enclosed: Yes
Contiguous: Yes
Permitted: Yes
Wet space: No
Addition: No
Conversion: No



10 Floor 2 - Family Room



Dimensions: 23'6" x 13'0"
Area: 299 sq. ft
Counted as living area: Yes

Heated: Yes
Finished: Yes
Enclosed: Yes
Contiguous: Yes
Permitted: Yes
Wet space: No
Addition: No
Conversion: No



11 Floor 2 - Living Room

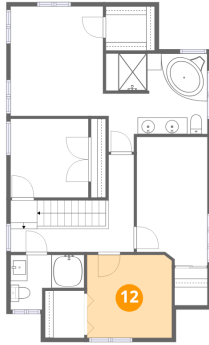


Dimensions: 21'1" x 14'7"
Area: 250 sq. ft
Counted as living area: Yes

Heated: Yes
Finished: Yes
Enclosed: Yes
Contiguous: Yes
Permitted: Yes
Wet space: No
Addition: No
Conversion: No



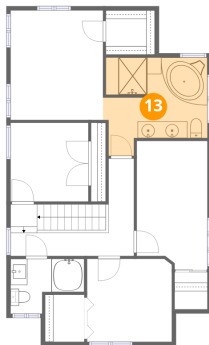
12 Floor 3 - Bedroom



Dimensions: 10'1" x 9'11"
Area: 99 sq. ft
Counted as living area: Yes

Heated: Yes
Finished: Yes
Enclosed: Yes
Contiguous: Yes
Permitted: Yes
Wet space: No
Addition: No
Conversion: No

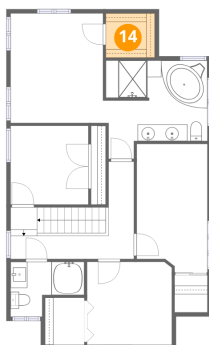
13 Floor 3 - Primary Bath



Dimensions: 12'5" x 11'8"
Area: 121 sq. ft
Counted as living area: Yes

Heated: Yes
Finished: Yes
Enclosed: Yes
Contiguous: Yes
Permitted: Yes
Wet space: Yes
Addition: No
Conversion: No

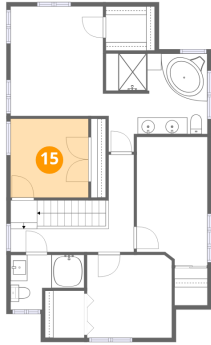
14 Floor 3 - W.I.C.



Dimensions: 5'10" x 5'3"
Area: 31 sq. ft
Counted as living area: Yes

Heated: Yes
Finished: Yes
Enclosed: Yes
Contiguous: Yes
Permitted: Yes
Wet space: No
Addition: No
Conversion: No

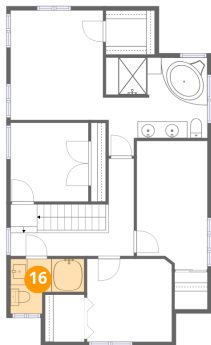
15 Floor 3 - Bedroom



Dimensions: 9'3" x 9'4"
Area: 87 sq. ft
Counted as living area: Yes

Heated: Yes
Finished: Yes
Enclosed: Yes
Contiguous: Yes
Permitted: Yes
Wet space: No
Addition: No
Conversion: No

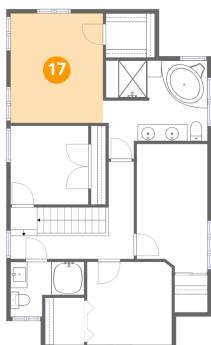
16 Floor 3 - Bath



Dimensions: 8'9" x 6'6"
Area: 44 sq. ft
Counted as living area: Yes

Heated: Yes
Finished: Yes
Enclosed: Yes
Contiguous: Yes
Permitted: Yes
Wet space: Yes
Addition: No
Conversion: No

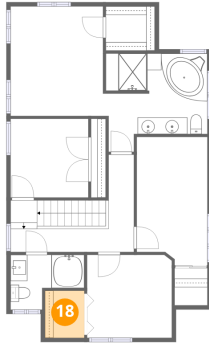
17 Floor 3 - Primary Bedroom



Dimensions: 11'0" x 13'1"
Area: 144 sq. ft
Counted as living area: Yes

Heated: Yes
Finished: Yes
Enclosed: Yes
Contiguous: Yes
Permitted: Yes
Wet space: No
Addition: No
Conversion: No

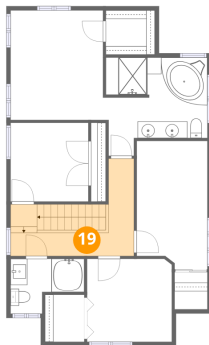
18 Floor 3 - W.I.C.



Dimensions: 4'8" x 5'7"
Area: 26 sq. ft
Counted as living area: Yes

Heated: Yes
Finished: Yes
Enclosed: Yes
Contiguous: Yes
Permitted: Yes
Wet space: No
Addition: No
Conversion: No

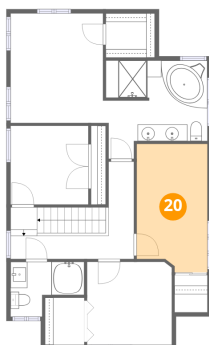
19 Floor 3 - Hall



Dimensions: 14'8" x 11'7"
Area: 107 sq. ft
Counted as living area: Yes

Heated: Yes
Finished: Yes
Enclosed: Yes
Contiguous: Yes
Permitted: Yes
Wet space: No
Addition: No
Conversion: No

20 Floor 3 - Bedroom



Dimensions: 8'5" x 15'4"
Area: 122 sq. ft
Counted as living area: Yes

Heated: Yes
Finished: Yes
Enclosed: Yes
Contiguous: Yes
Permitted: Yes
Wet space: No
Addition: No
Conversion: No