

# 101 Bogey Ct, Milliken, CO, US



**Total Area: 3688 sq. ft**

Basement: 920 sq. ft, 1st Floor: 1880 sq. ft, 2nd Floor: 888 sq. ft

Excluded: Utility 112 sq. ft, Covered patio 747 sq. ft, Open to below 284 sq. ft, Covered deck 475 sq. ft, Deck 175 sq. ft, Low ceiling 19 sq. ft, Walls: 261 sq. ft

## Property summary



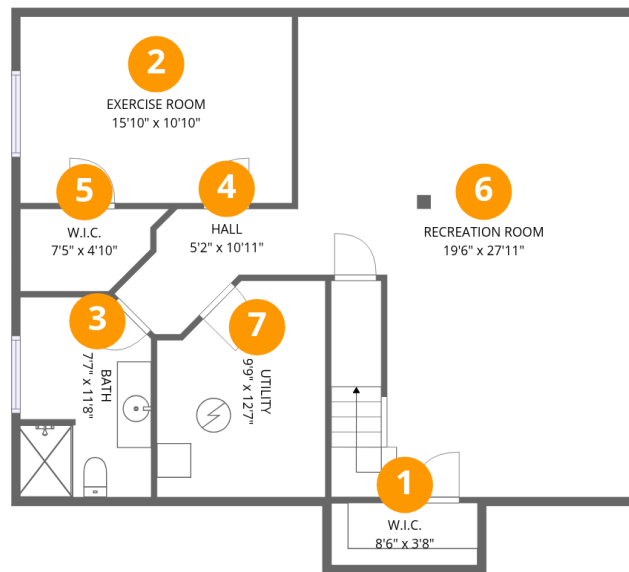
Home data report

# 101 Bogey Ct, Milliken, CO, US

 **1**  
Half baths

 **1**  
Garages

# 101 Bogey Ct, Milliken, CO, US



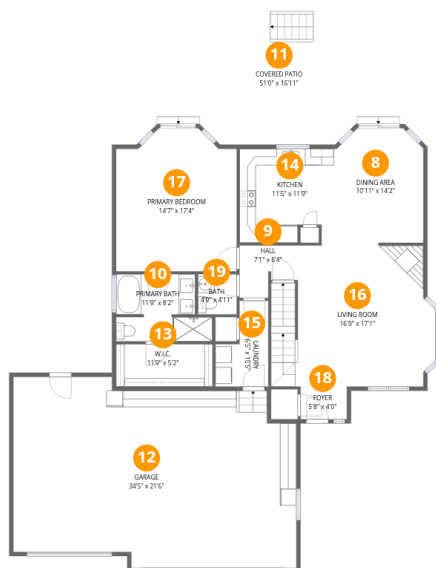
## Room dimensions

Floor 1 Below grade

Total:920sqft

Excluded: 112sqft

#		Dimensions	sqft	Counted as living area
1	W.I.C.	8'6" x 3'8"	31 sq. ft	Yes
2	Exercise Room	15'10" x 10'10"	172 sq. ft	Yes
3	Bath	7'7" x 11'8"	89 sq. ft	Yes
4	Hall	5'2" x 10'11"	56 sq. ft	Yes
5	W.I.C.	7'5" x 4'10"	36 sq. ft	Yes
6	Recreation Room	19'6" x 27'11"	545 sq. ft	Yes
7	Utility	9'9" x 12'7"	123 sq. ft	No



## Room dimensions

Floor 2

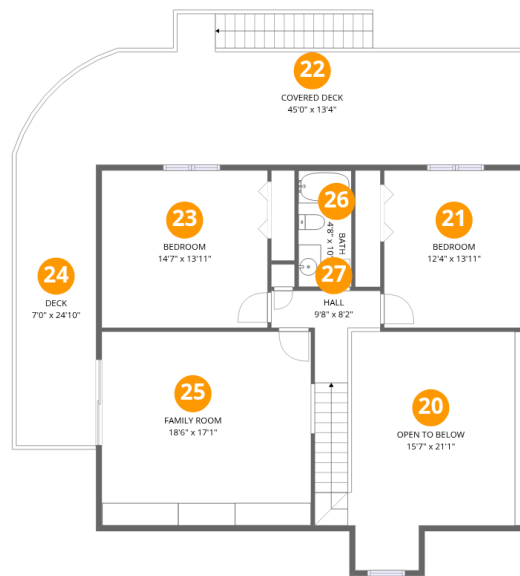
Total: 1880sqft Excluded: 747sqft

#		Dimensions	sqft	Counted as living area
8	Dining Area	10'11" x 14'2"	155 sq. ft	Yes
9	Hall	7'1" x 6'4"	45 sq. ft	Yes
10	Primary Bath	11'9" x 8'2"	96 sq. ft	Yes
11	Covered Patio	51'0" x 16'11"	861 sq. ft	No
12	Garage	34'5" x 21'6"	740 sq. ft	Yes
13	W.I.C.	11'9" x 5'2"	60 sq. ft	Yes
14	Kitchen	11'5" x 11'9"	134 sq. ft	Yes
15	Laundry	6'5" x 10'5"	67 sq. ft	Yes
16	Living Room	16'9" x 17'1"	287 sq. ft	Yes
17	Primary Bedroom	14'7" x 17'4"	254 sq. ft	Yes
18	Foyer	5'8" x 4'0"	22 sq. ft	Yes

Home data report

**101 Bogey Ct, Milliken, CO, US**

#		Dimensions	sqft	Counted as living area
19	Bath	4'9" x 4'11"	23 sq. ft	Yes



## Room dimensions

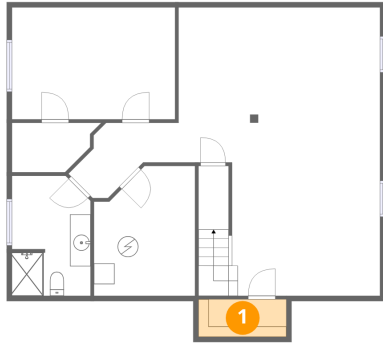
Floor 3

Total:888sqft

Excluded: 953sqft

#		Dimensions	sqft	Counted as living area
20	Open To Below	15'7" x 21'11"	328 sq. ft	No
21	Bedroom	12'4" x 13'11"	171 sq. ft	Yes
22	Covered Deck	45'0" x 13'4"	599 sq. ft	No
23	Bedroom	14'7" x 13'11"	203 sq. ft	Yes
24	Deck	7'0" x 24'10"	174 sq. ft	No
25	Family Room	18'6" x 17'1"	316 sq. ft	Yes
26	Bath	4'8" x 10'3"	48 sq. ft	Yes
27	Hall	9'8" x 8'2"	78 sq. ft	Yes

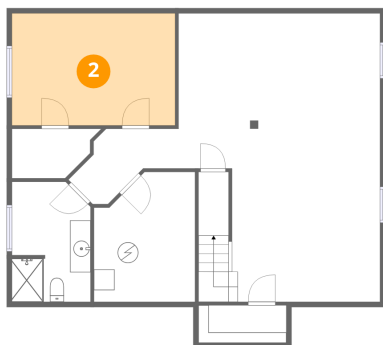
**1 Floor 1 - W.I.C.**



Dimensions: 8'6" x 3'8"  
Area: 31 sq. ft  
Counted as living area: Yes

Heated: Yes  
Finished: Yes  
Enclosed: Yes  
Contiguous: Yes  
Permitted: Yes  
Wet space: No  
Addition: No  
Conversion: No

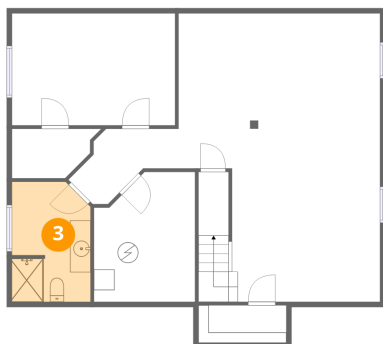
**2 Floor 1 - Exercise Room**



Dimensions: 15'10" x 10'10"  
Area: 172 sq. ft  
Counted as living area: Yes

Heated: Yes  
Finished: Yes  
Enclosed: Yes  
Contiguous: Yes  
Permitted: Yes  
Wet space: No  
Addition: No  
Conversion: No

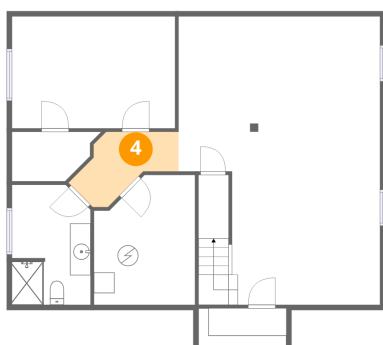
### 3 Floor 1 - Bath



Dimensions: 7'7" x 11'8"  
Area: 89 sq. ft  
Counted as living area: Yes

Heated: Yes  
Finished: Yes  
Enclosed: Yes  
Contiguous: Yes  
Permitted: Yes  
Wet space: Yes  
Addition: No  
Conversion: No

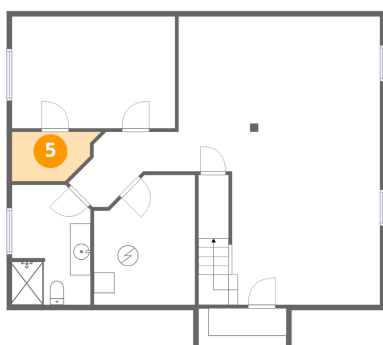
### 4 Floor 1 - Hall



Dimensions: 5'2" x 10'11"  
Area: 56 sq. ft  
Counted as living area: Yes

Heated: Yes  
Finished: Yes  
Enclosed: Yes  
Contiguous: Yes  
Permitted: Yes  
Wet space: No  
Addition: No  
Conversion: No

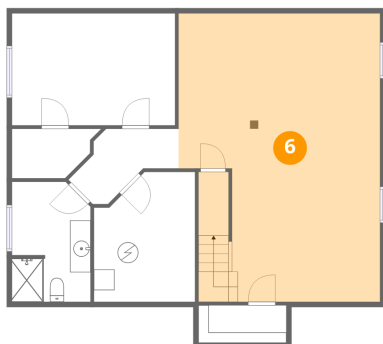
### 5 Floor 1 - W.I.C.



Dimensions: 7'5" x 4'10"  
Area: 36 sq. ft  
Counted as living area: Yes

Heated: Yes  
Finished: Yes  
Enclosed: Yes  
Contiguous: Yes  
Permitted: Yes  
Wet space: No  
Addition: No  
Conversion: No

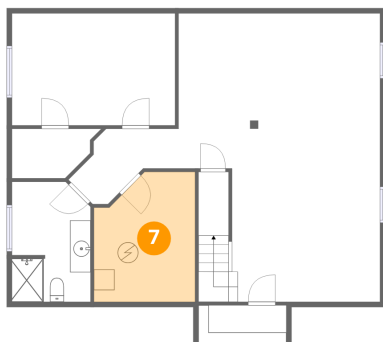
### 6 Floor 1 - Recreation Room



Dimensions: 19'6" x 27'11"  
Area: 545 sq. ft  
Counted as living area: Yes

Heated: Yes  
Finished: Yes  
Enclosed: Yes  
Contiguous: Yes  
Permitted: Yes  
Wet space: No  
Addition: No  
Conversion: No

### 7 Floor 1 - Utility



Dimensions: 9'9" x 12'7"  
Area: 123 sq. ft  
Counted as living area: No

Heated: Yes  
Finished: No  
Enclosed: Yes  
Contiguous: Yes  
Permitted: Yes  
Wet space: No  
Addition: No  
Conversion: No

### 8 Floor 2 - Dining Area



Dimensions: 10'11" x 14'2"  
Area: 155 sq. ft  
Counted as living area: Yes

Heated: Yes  
Finished: Yes  
Enclosed: Yes  
Contiguous: Yes  
Permitted: Yes  
Wet space: No  
Addition: No  
Conversion: No

### 9 Floor 2 - Hall



Dimensions: 7'1" x 6'4"  
Area: 45 sq. ft  
Counted as living area: Yes

Heated: Yes  
Finished: Yes  
Enclosed: Yes  
Contiguous: Yes  
Permitted: Yes  
Wet space: No  
Addition: No  
Conversion: No

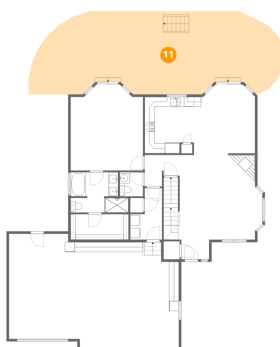
### 10 Floor 2 - Primary Bath



Dimensions: 11'9" x 8'2"  
Area: 96 sq. ft  
Counted as living area: Yes

Heated: Yes  
Finished: Yes  
Enclosed: Yes  
Contiguous: Yes  
Permitted: Yes  
Wet space: Yes  
Addition: No  
Conversion: No

### 11 Floor 2 - Covered Patio



Dimensions: 51'0" x 16'11"  
Area: 861 sq. ft  
Counted as living area: No

Heated: No  
Finished: No  
Enclosed: No  
Contiguous: Yes  
Permitted: Yes  
Wet space: No  
Addition: No  
Conversion: No

## 12 Floor 2 - Garage



Dimensions: 34'5" x 21'6"  
Area: 740 sq. ft  
Counted as living area: No

Heated: No  
Finished: Yes  
Enclosed: Yes  
Contiguous: Yes  
Permitted: Yes  
Wet space: No  
Addition: No  
Conversion: No

## 13 Floor 2 - W.I.C.



Dimensions: 11'9" x 5'2"  
Area: 60 sq. ft  
Counted as living area: Yes

Heated: Yes  
Finished: Yes  
Enclosed: Yes  
Contiguous: Yes  
Permitted: Yes  
Wet space: No  
Addition: No  
Conversion: No

## 14 Floor 2 - Kitchen



Dimensions: 11'5" x 11'9"  
Area: 134 sq. ft  
Counted as living area: Yes

Heated: Yes  
Finished: Yes  
Enclosed: Yes  
Contiguous: Yes  
Permitted: Yes  
Wet space: No  
Addition: No  
Conversion: No

### 15 Floor 2 - Laundry



Dimensions: 6'5" x 10'5"  
Area: 67 sq. ft  
Counted as living area: Yes

Heated: Yes  
Finished: Yes  
Enclosed: Yes  
Contiguous: Yes  
Permitted: Yes  
Wet space: No  
Addition: No  
Conversion: No

### 16 Floor 2 - Living Room



Dimensions: 16'9" x 17'1"  
Area: 287 sq. ft  
Counted as living area: Yes

Heated: Yes  
Finished: Yes  
Enclosed: Yes  
Contiguous: Yes  
Permitted: Yes  
Wet space: No  
Addition: No  
Conversion: No

### 17 Floor 2 - Primary Bedroom



Dimensions: 14'7" x 17'4"  
Area: 254 sq. ft  
Counted as living area: Yes

Heated: Yes  
Finished: Yes  
Enclosed: Yes  
Contiguous: Yes  
Permitted: Yes  
Wet space: No  
Addition: No  
Conversion: No

**18** Floor 2 - Foyer



Dimensions: 5'8" x 4'0"  
Area: 22 sq. ft  
Counted as living area: Yes

Heated: Yes  
Finished: Yes  
Enclosed: Yes  
Contiguous: Yes  
Permitted: Yes  
Wet space: No  
Addition: No  
Conversion: No

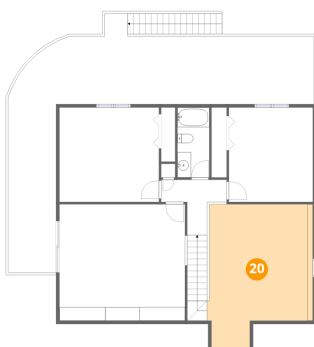
**19** Floor 2 - Bath



Dimensions: 4'9" x 4'11"  
Area: 23 sq. ft  
Counted as living area: Yes

Heated: Yes  
Finished: Yes  
Enclosed: Yes  
Contiguous: Yes  
Permitted: Yes  
Wet space: Yes  
Addition: No  
Conversion: No

**20** Floor 3 - Open To Below



Dimensions: 15'7" x 21'1"  
Area: 328 sq. ft  
Counted as living area: No

Heated: No  
Finished: No  
Enclosed: No  
Contiguous: Yes  
Permitted: No  
Wet space: No  
Addition: No  
Conversion: No

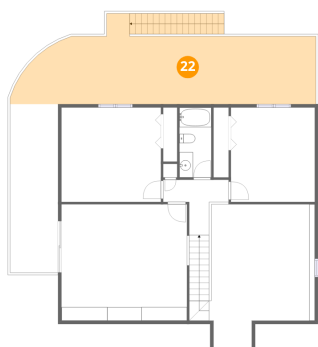
### 21 Floor 3 - Bedroom



Dimensions: 12'4" x 13'11"  
Area: 171 sq. ft  
Counted as living area: Yes

Heated: Yes  
Finished: Yes  
Enclosed: Yes  
Contiguous: Yes  
Permitted: Yes  
Wet space: No  
Addition: No  
Conversion: No

### 22 Floor 3 - Covered Deck



Dimensions: 45'0" x 13'4"  
Area: 599 sq. ft  
Counted as living area: No

Heated: No  
Finished: No  
Enclosed: No  
Contiguous: Yes  
Permitted: Yes  
Wet space: No  
Addition: No  
Conversion: No

### 23 Floor 3 - Bedroom



Dimensions: 14'7" x 13'11"  
Area: 203 sq. ft  
Counted as living area: Yes

Heated: Yes  
Finished: Yes  
Enclosed: Yes  
Contiguous: Yes  
Permitted: Yes  
Wet space: No  
Addition: No  
Conversion: No

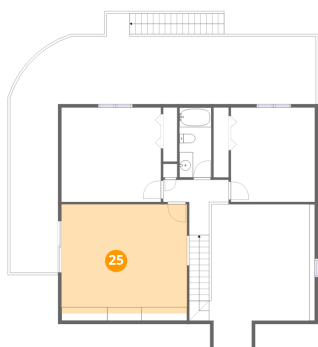
**24** Floor 3 - Deck



Dimensions: 7'0" x 24'10"  
Area: 174 sq. ft  
Counted as living area: No

Heated: No  
Finished: No  
Enclosed: No  
Contiguous: Yes  
Permitted: Yes  
Wet space: No  
Addition: No  
Conversion: No

**25** Floor 3 - Family Room



Dimensions: 18'6" x 17'1"  
Area: 316 sq. ft  
Counted as living area: Yes

Heated: Yes  
Finished: Yes  
Enclosed: Yes  
Contiguous: Yes  
Permitted: Yes  
Wet space: No  
Addition: No  
Conversion: No

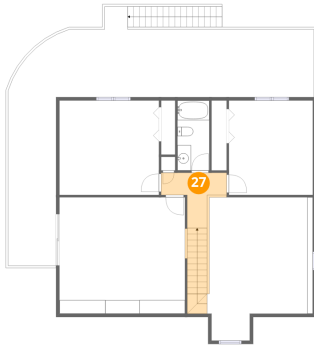
**26** Floor 3 - Bath



Dimensions: 4'8" x 10'3"  
Area: 48 sq. ft  
Counted as living area: Yes

Heated: Yes  
Finished: Yes  
Enclosed: Yes  
Contiguous: Yes  
Permitted: Yes  
Wet space: Yes  
Addition: No  
Conversion: No

**27** Floor 3 - Hall



Dimensions: 9'8" x 8'2"  
Area: 78 sq. ft  
Counted as living area: Yes

Heated: Yes  
Finished: Yes  
Enclosed: Yes  
Contiguous: Yes  
Permitted: Yes  
Wet space: No  
Addition: No  
Conversion: No