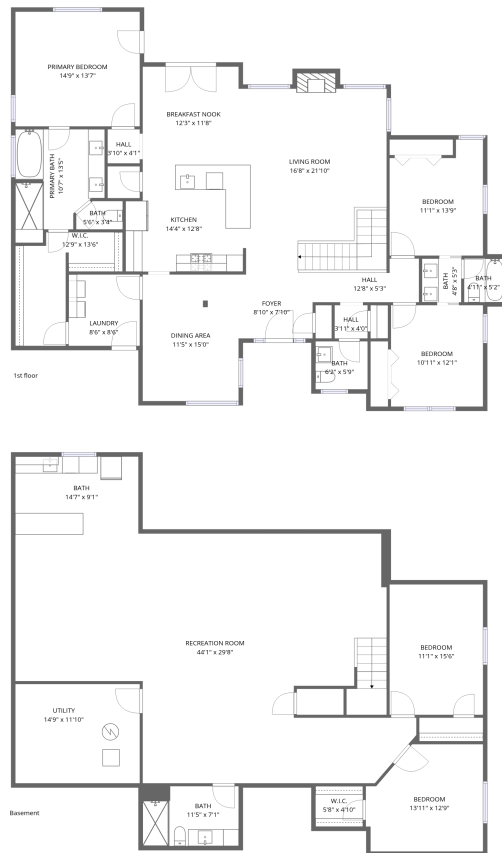


Home data report

7853 Cherry Blossom Dr, Windsor, CO, US



Total Area: 3776 sq. ft

Basement: 1767 sq. ft, 1st Floor: 2009 sq. ft

Excluded: Utility 175 sq. ft, Fireplace 11 sq. ft, Walls: 221 sq. ft

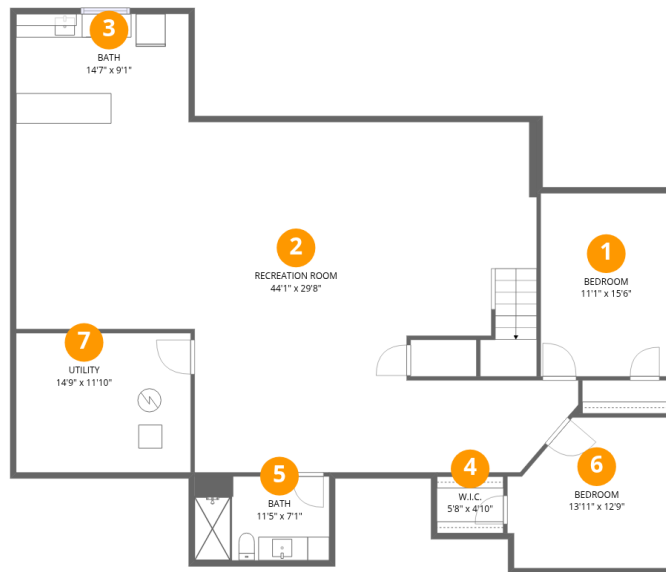
Property summary

 **2** Floors

 **5** Bedrooms

 **3** Bathrooms

 **1** Half baths



Room dimensions

Floor 1 Below grade

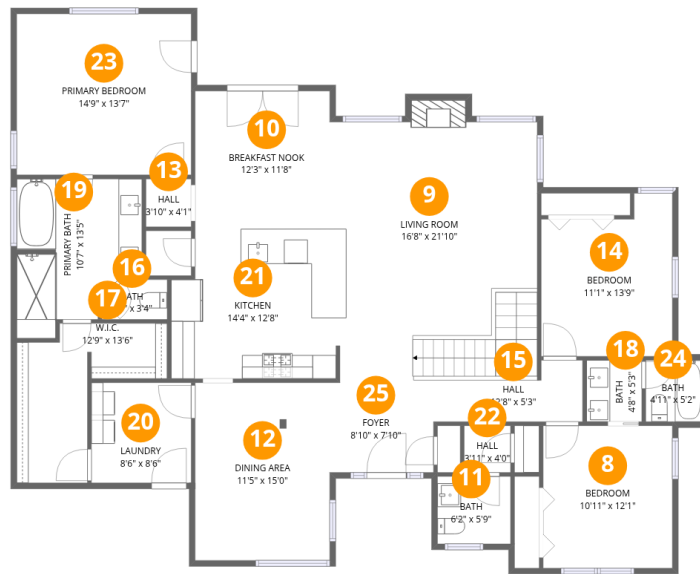
Total:1767sqft

Excluded: 175sqft

| # | | Dimensions | sqft | Counted as living area |
|---|-----------------|----------------|-------------|------------------------|
| 1 | Bedroom | 11'1" x 15'6" | 172 sq. ft | Yes |
| 2 | Recreation Room | 44'1" x 29'8" | 1113 sq. ft | Yes |
| 3 | Bath | 14'7" x 9'1" | 134 sq. ft | Yes |
| 4 | W.I.C. | 5'8" x 4'10" | 27 sq. ft | Yes |
| 5 | Bath | 11'5" x 7'1" | 81 sq. ft | Yes |
| 6 | Bedroom | 13'11" x 12'9" | 159 sq. ft | Yes |
| 7 | Utility | 14'9" x 11'10" | 175 sq. ft | No |

Home data report

7853 Cherry Blossom Dr,Windsor,CO,US



Room dimensions

Floor 2

Total:2009sqft

Excluded: 11sqft

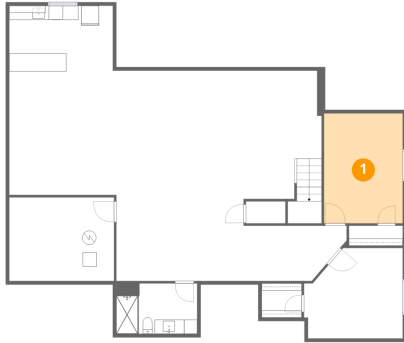
| # | | Dimensions | sqft | Counted as living area |
|----|----------------|----------------|------------|------------------------|
| 8 | Bedroom | 10'11" x 12'1" | 132 sq. ft | Yes |
| 9 | Living Room | 16'8" x 21'10" | 374 sq. ft | Yes |
| 10 | Breakfast Nook | 12'3" x 11'8" | 141 sq. ft | Yes |
| 11 | Bath | 6'2" x 5'9" | 35 sq. ft | Yes |
| 12 | Dining Area | 11'5" x 15'0" | 172 sq. ft | Yes |
| 13 | Hall | 3'10" x 4'1" | 16 sq. ft | Yes |
| 14 | Bedroom | 11'1" x 13'9" | 136 sq. ft | Yes |
| 15 | Hall | 12'8" x 5'3" | 50 sq. ft | Yes |
| 16 | Bath | 5'6" x 3'4" | 17 sq. ft | Yes |
| 17 | W.I.C. | 12'9" x 13'6" | 106 sq. ft | Yes |
| 18 | Bath | 4'8" x 5'3" | 24 sq. ft | Yes |

Home data report

7853 Cherry Blossom Dr,Windsor,CO,US

| # | | Dimensions | sqft | Counted as living area |
|----|-----------------|---------------|------------|------------------------|
| 19 | Primary Bath | 10'7" x 13'5" | 119 sq. ft | Yes |
| 20 | Laundry | 8'6" x 8'6" | 72 sq. ft | Yes |
| 21 | Kitchen | 14'4" x 12'8" | 172 sq. ft | Yes |
| 22 | Hall | 3'11" x 4'0" | 16 sq. ft | Yes |
| 23 | Primary Bedroom | 14'9" x 13'7" | 202 sq. ft | Yes |
| 24 | Bath | 4'11" x 5'2" | 25 sq. ft | Yes |
| 25 | Foyer | 8'10" x 7'10" | 69 sq. ft | Yes |

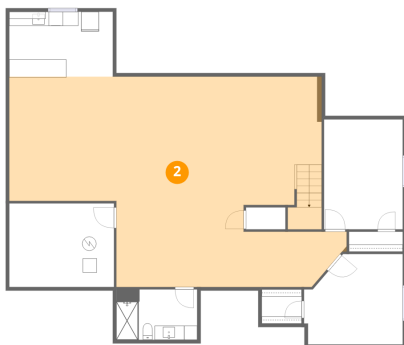
1 Floor 1 - Bedroom



Dimensions: 11'1" x 15'6"
Area: 172 sq. ft
Counted as living area: Yes

Heated: Yes
Finished: Yes
Enclosed: Yes
Contiguous: Yes
Permitted: Yes
Wet space: No
Addition: No
Conversion: No

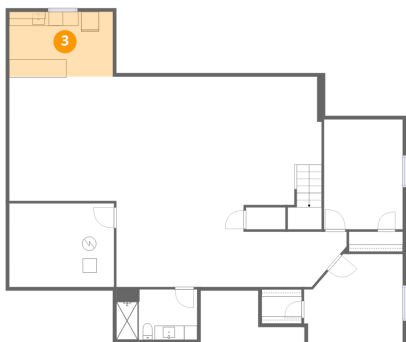
2 Floor 1 - Recreation Room



Dimensions: 44'1" x 29'8"
Area: 1113 sq. ft
Counted as living area: Yes

Heated: Yes
Finished: Yes
Enclosed: Yes
Contiguous: Yes
Permitted: Yes
Wet space: No
Addition: No
Conversion: No

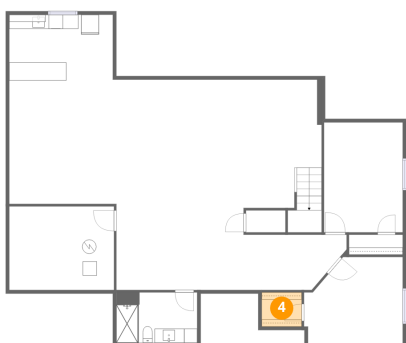
3 Floor 1 - Bath



Dimensions: 14'7" x 9'1"
Area: 134 sq. ft
Counted as living area: Yes

Heated: Yes
Finished: Yes
Enclosed: Yes
Contiguous: Yes
Permitted: Yes
Wet space: Yes
Addition: No
Conversion: No

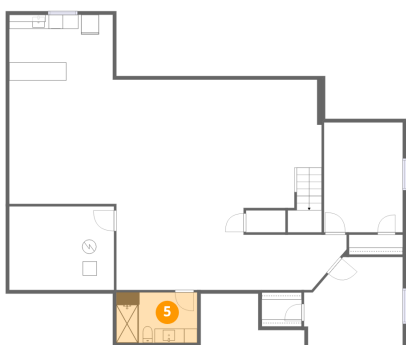
4 Floor 1 - W.I.C.



Dimensions: 5'8" x 4'10"
Area: 27 sq. ft
Counted as living area: Yes

Heated: Yes
Finished: Yes
Enclosed: Yes
Contiguous: Yes
Permitted: Yes
Wet space: No
Addition: No
Conversion: No

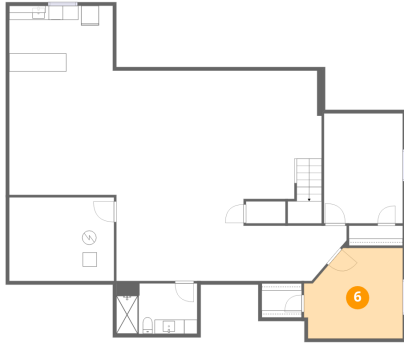
5 Floor 1 - Bath



Dimensions: 11'5" x 7'1"
Area: 81 sq. ft
Counted as living area: Yes

Heated: Yes
Finished: Yes
Enclosed: Yes
Contiguous: Yes
Permitted: Yes
Wet space: Yes
Addition: No
Conversion: No

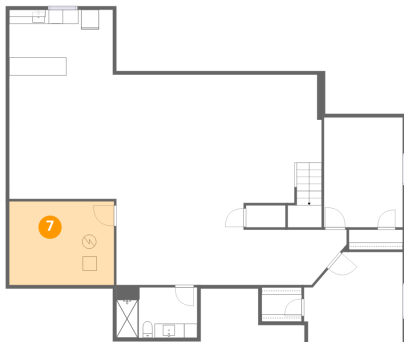
6 Floor 1 - Bedroom



Dimensions: 13'11" x 12'9"
Area: 159 sq. ft
Counted as living area: Yes

Heated: Yes
Finished: Yes
Enclosed: Yes
Contiguous: Yes
Permitted: Yes
Wet space: No
Addition: No
Conversion: No

7 Floor 1 - Utility



Dimensions: 14'9" x 11'10"
Area: 175 sq. ft
Counted as living area: No

Heated: Yes
Finished: No
Enclosed: Yes
Contiguous: Yes
Permitted: Yes
Wet space: No
Addition: No
Conversion: No

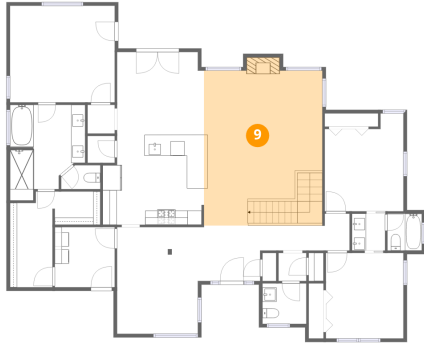
8 Floor 2 - Bedroom



Dimensions: 10'11" x 12'1"
Area: 132 sq. ft
Counted as living area: Yes

Heated: Yes
Finished: Yes
Enclosed: Yes
Contiguous: Yes
Permitted: Yes
Wet space: No
Addition: No
Conversion: No

9 Floor 2 - Living Room



Dimensions: 16'8" x 21'10"
Area: 374 sq. ft
Counted as living area: Yes

Heated: Yes
Finished: Yes
Enclosed: Yes
Contiguous: Yes
Permitted: Yes
Wet space: No
Addition: No
Conversion: No

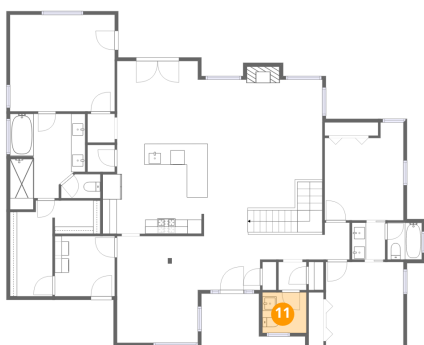
10 Floor 2 - Breakfast Nook



Dimensions: 12'3" x 11'8"
Area: 141 sq. ft
Counted as living area: Yes

Heated: Yes
Finished: Yes
Enclosed: Yes
Contiguous: Yes
Permitted: Yes
Wet space: No
Addition: No
Conversion: No

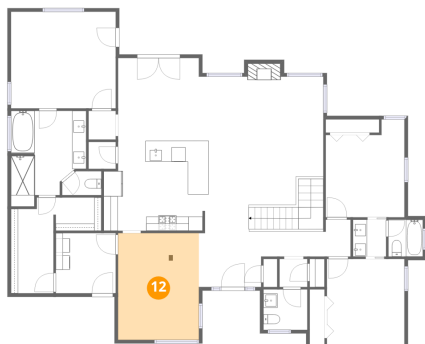
11 Floor 2 - Bath



Dimensions: 6'2" x 5'9"
Area: 35 sq. ft
Counted as living area: Yes

Heated: Yes
Finished: Yes
Enclosed: Yes
Contiguous: Yes
Permitted: Yes
Wet space: Yes
Addition: No
Conversion: No

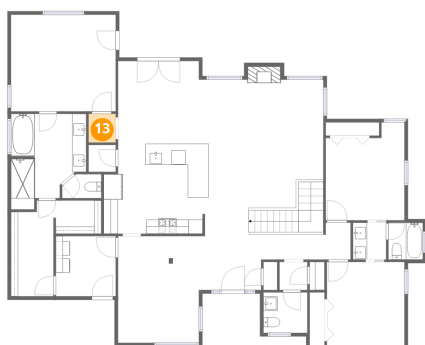
12 Floor 2 - Dining Area



Dimensions: 11'5" x 15'0"
Area: 172 sq. ft
Counted as living area: Yes

Heated: Yes
Finished: Yes
Enclosed: Yes
Contiguous: Yes
Permitted: Yes
Wet space: No
Addition: No
Conversion: No

13 Floor 2 - Hall



Dimensions: 3'10" x 4'1"
Area: 16 sq. ft
Counted as living area: Yes

Heated: Yes
Finished: Yes
Enclosed: Yes
Contiguous: Yes
Permitted: Yes
Wet space: No
Addition: No
Conversion: No

14 Floor 2 - Bedroom



Dimensions: 11'1" x 13'9"
Area: 136 sq. ft
Counted as living area: Yes

Heated: Yes
Finished: Yes
Enclosed: Yes
Contiguous: Yes
Permitted: Yes
Wet space: No
Addition: No
Conversion: No

15 Floor 2 - Hall



Dimensions: 12'8" x 5'3"
Area: 50 sq. ft
Counted as living area: Yes

Heated: Yes
Finished: Yes
Enclosed: Yes
Contiguous: Yes
Permitted: Yes
Wet space: No
Addition: No
Conversion: No

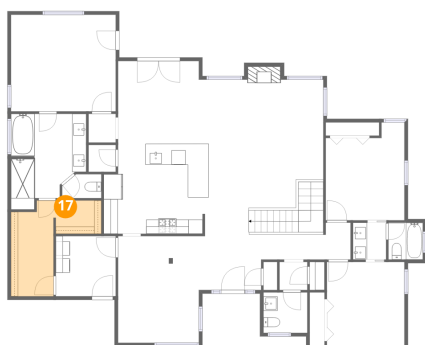
16 Floor 2 - Bath



Dimensions: 5'6" x 3'4"
Area: 17 sq. ft
Counted as living area: Yes

Heated: Yes
Finished: Yes
Enclosed: Yes
Contiguous: Yes
Permitted: Yes
Wet space: Yes
Addition: No
Conversion: No

17 Floor 2 - W.I.C.



Dimensions: 12'9" x 13'6"
Area: 106 sq. ft
Counted as living area: Yes

Heated: Yes
Finished: Yes
Enclosed: Yes
Contiguous: Yes
Permitted: Yes
Wet space: No
Addition: No
Conversion: No

18 Floor 2 - Bath



Dimensions: 4'8" x 5'3"
Area: 24 sq. ft
Counted as living area: Yes

Heated: Yes
Finished: Yes
Enclosed: Yes
Contiguous: Yes
Permitted: Yes
Wet space: Yes
Addition: No
Conversion: No

19 Floor 2 - Primary Bath



Dimensions: 10'7" x 13'5"
Area: 119 sq. ft
Counted as living area: Yes

Heated: Yes
Finished: Yes
Enclosed: Yes
Contiguous: Yes
Permitted: Yes
Wet space: Yes
Addition: No
Conversion: No

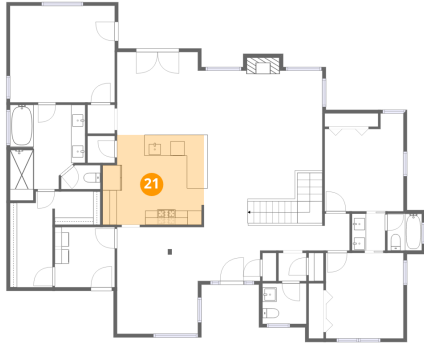
20 Floor 2 - Laundry



Dimensions: 8'6" x 8'6"
Area: 72 sq. ft
Counted as living area: Yes

Heated: Yes
Finished: Yes
Enclosed: Yes
Contiguous: Yes
Permitted: Yes
Wet space: No
Addition: No
Conversion: No

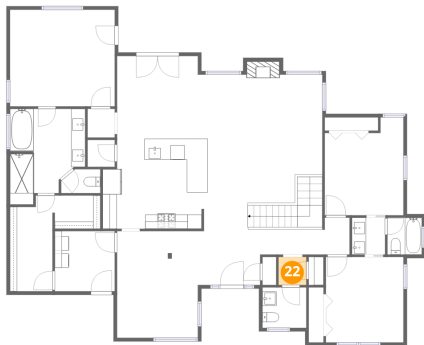
21 Floor 2 - Kitchen



Dimensions: 14'4" x 12'8"
Area: 172 sq. ft
Counted as living area: Yes

Heated: Yes
Finished: Yes
Enclosed: Yes
Contiguous: Yes
Permitted: Yes
Wet space: No
Addition: No
Conversion: No

22 Floor 2 - Hall



Dimensions: 3'11" x 4'0"
Area: 16 sq. ft
Counted as living area: Yes

Heated: Yes
Finished: Yes
Enclosed: Yes
Contiguous: Yes
Permitted: Yes
Wet space: No
Addition: No
Conversion: No

23 Floor 2 - Primary Bedroom



Dimensions: 14'9" x 13'7"
Area: 202 sq. ft
Counted as living area: Yes

Heated: Yes
Finished: Yes
Enclosed: Yes
Contiguous: Yes
Permitted: Yes
Wet space: No
Addition: No
Conversion: No

24 Floor 2 - Bath



Dimensions: 4'11" x 5'2"
Area: 25 sq. ft
Counted as living area: Yes

Heated: Yes
Finished: Yes
Enclosed: Yes
Contiguous: Yes
Permitted: Yes
Wet space: Yes
Addition: No
Conversion: No

25 Floor 2 - Foyer



Dimensions: 8'10" x 7'10"
Area: 69 sq. ft
Counted as living area: Yes

Heated: Yes
Finished: Yes
Enclosed: Yes
Contiguous: Yes
Permitted: Yes
Wet space: No
Addition: No
Conversion: No