

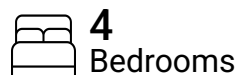


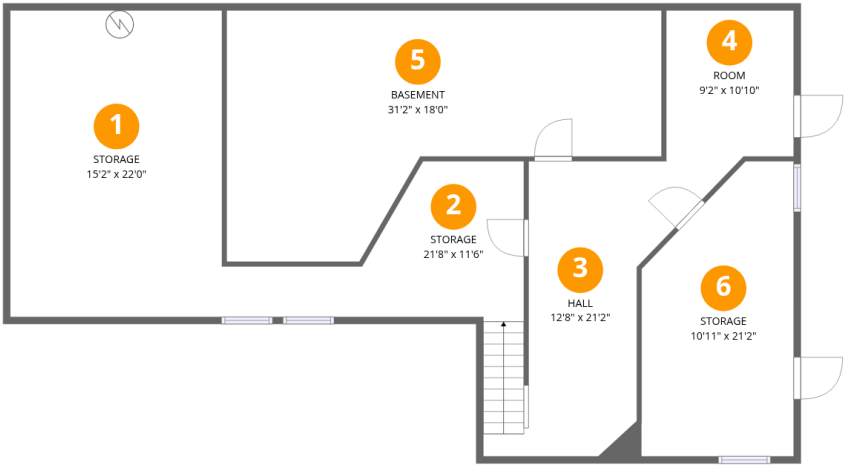
Total Area: 1766 sq. ft

Below Ground: 0 sq. ft, 1st Floor: 1766 sq. ft

Excluded: Storage 718 sq. ft, Basement 422 sq. ft, Room 98 sq. ft, Hall 220 sq. ft, Garage 251 sq. ft, Deck 106 sq. ft, Walls: 212 sq. ft

Property summary





Room dimensions

Floor 1 Below grade Total:0sqft Excluded: 1458sqft

#		Dimensions	sqft	Counted as living area
1	Storage	15'2" x 22'0"	334 sq. ft	No
2	Storage	21'8" x 11'6"	150 sq. ft	No
3	Hall	12'8" x 21'2"	218 sq. ft	No
4	Room	9'2" x 10'10"	98 sq. ft	No
5	Basement	31'2" x 18'0"	415 sq. ft	No
6	Storage	10'11" x 21'2"	205 sq. ft	No



Room dimensions

Floor 2 Total:1766sqft Excluded: 357sqft

#		Dimensions	sqft	Counted as living area
7	Deck	9'5" x 11'4"	106 sq. ft	No
8	Bath	7'10" x 7'5"	49 sq. ft	Yes
9	Laundry	5'10" x 2'11"	17 sq. ft	Yes
10	Bedroom	12'8" x 11'10"	149 sq. ft	Yes
11	Dining Area	17'1" x 11'3"	149 sq. ft	Yes
12	Foyer	4'0" x 11'3"	45 sq. ft	Yes
13	Garage	22'2" x 11'4"	251 sq. ft	No
14	Kitchen	12'10" x 13'6"	158 sq. ft	Yes
15	Breakfast Nook	6'2" x 10'3"	63 sq. ft	Yes
16	Bath	4'9" x 6'11"	32 sq. ft	Yes
17	Entry	22'2" x 7'4"	167 sq. ft	Yes

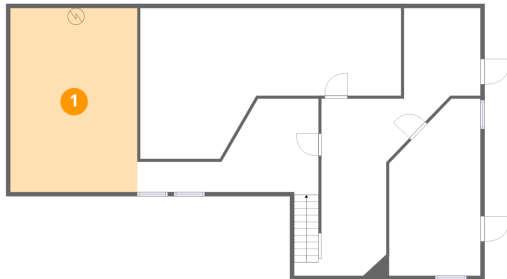
Home data report

**1845 Main Street, Brockton, Plymouth County,
Massachusetts, United States, 02301**



#		Dimensions	sqft	Counted as living area
18	Bedroom	9'3" x 11'3"	104 sq. ft	Yes
19	Living Room	23'2" x 11'10"	285 sq. ft	Yes
20	Primary Bedroom	17'5" x 11'3"	143 sq. ft	Yes
21	Bedroom	16'3" x 11'10"	192 sq. ft	Yes

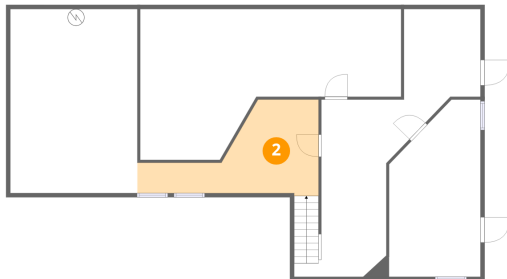
1 Floor 1 - Storage



Dimensions: 15'2" x 22'0"
Area: 334 sq. ft
Counted as living area: No

Heated: No
Finished: No
Enclosed: No
Contiguous: Yes
Permitted: Yes
Wet space: No
Addition: No
Conversion: No

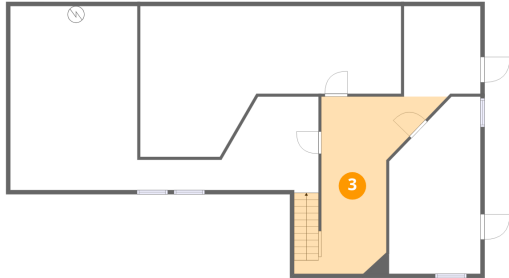
2 Floor 1 - Storage



Dimensions: 21'8" x 11'6"
Area: 150 sq. ft
Counted as living area: No

Heated: No
Finished: No
Enclosed: No
Contiguous: Yes
Permitted: Yes
Wet space: No
Addition: No
Conversion: No

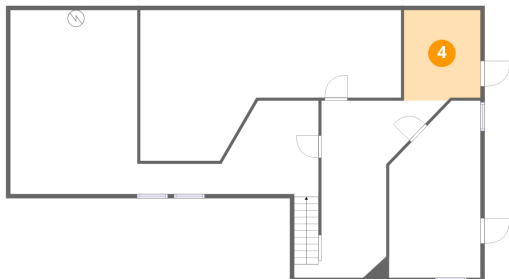
3 Floor 1 - Hall



Dimensions: 12'8" x 21'2"
Area: 218 sq. ft
Counted as living area: No

Heated: Yes
Finished: No
Enclosed: Yes
Contiguous: Yes
Permitted: Yes
Wet space: No
Addition: No
Conversion: No

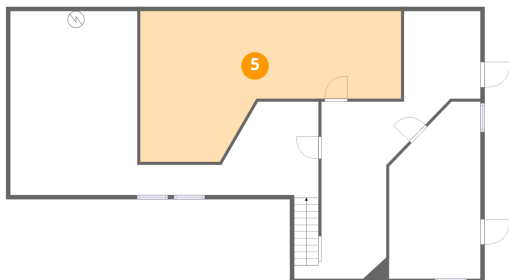
4 Floor 1 - Room



Dimensions: 9'2" x 10'10"
Area: 98 sq. ft
Counted as living area: No

Heated: Yes
Finished: No
Enclosed: Yes
Contiguous: Yes
Permitted: Yes
Wet space: No
Addition: No
Conversion: No

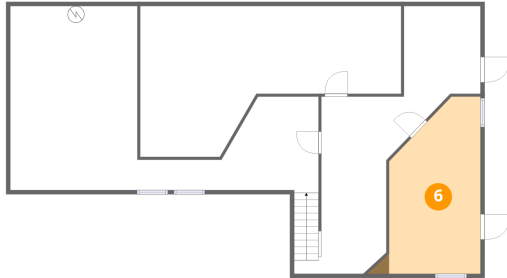
5 Floor 1 - Basement



Dimensions: 31'2" x 18'0"
Area: 415 sq. ft
Counted as living area: No

Heated: Yes
Finished: No
Enclosed: Yes
Contiguous: Yes
Permitted: Yes
Wet space: No
Addition: No
Conversion: No

6 Floor 1 - Storage



Dimensions: 10'11" x 21'2"
Area: 205 sq. ft
Counted as living area: No

Heated: No
Finished: No
Enclosed: No
Contiguous: Yes
Permitted: Yes
Wet space: No
Addition: No
Conversion: No

7 Floor 2 - Deck



Dimensions: 9'5" x 11'4"
Area: 106 sq. ft
Counted as living area: No

Heated: No
Finished: No
Enclosed: No
Contiguous: Yes
Permitted: Yes
Wet space: No
Addition: No
Conversion: No

8 Floor 2 - Bath



Dimensions: 7'10" x 7'5"
Area: 49 sq. ft
Counted as living area: Yes

Heated: Yes
Finished: Yes
Enclosed: Yes
Contiguous: Yes
Permitted: Yes
Wet space: Yes
Addition: No
Conversion: No

9 Floor 2 - Laundry



Dimensions: 5'10" x 2'11"
Area: 17 sq. ft
Counted as living area: Yes

Heated: Yes
Finished: Yes
Enclosed: Yes
Contiguous: Yes
Permitted: Yes
Wet space: No
Addition: No
Conversion: No

10 Floor 2 - Bedroom



Dimensions: 12'8" x 11'10"
Area: 149 sq. ft
Counted as living area: Yes

Heated: Yes
Finished: Yes
Enclosed: Yes
Contiguous: Yes
Permitted: Yes
Wet space: No
Addition: No
Conversion: No

11 Floor 2 - Dining Area



Dimensions: 17'1" x 11'3"
Area: 149 sq. ft
Counted as living area: Yes

Heated: Yes
Finished: Yes
Enclosed: Yes
Contiguous: Yes
Permitted: Yes
Wet space: No
Addition: No
Conversion: No

12 Floor 2 - Foyer



Dimensions: 4'0" x 11'3"
Area: 45 sq. ft
Counted as living area: Yes

Heated: Yes
Finished: Yes
Enclosed: Yes
Contiguous: Yes
Permitted: Yes
Wet space: No
Addition: No
Conversion: No

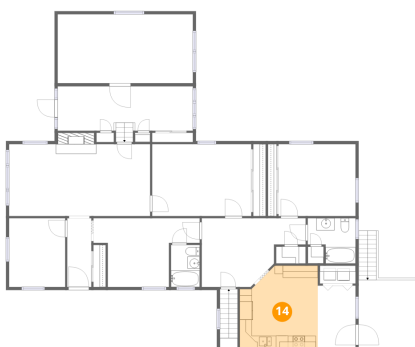
13 Floor 2 - Garage



Dimensions: 22'2" x 11'4"
Area: 251 sq. ft
Counted as living area: No

Heated: No
Finished: No
Enclosed: Yes
Contiguous: Yes
Permitted: Yes
Wet space: No
Addition: No
Conversion: No

14 Floor 2 - Kitchen



Dimensions: 12'10" x 13'6"
Area: 158 sq. ft
Counted as living area: Yes

Heated: Yes
Finished: Yes
Enclosed: Yes
Contiguous: Yes
Permitted: Yes
Wet space: No
Addition: No
Conversion: No

15 Floor 2 - Breakfast Nook



Dimensions: 6'2" x 10'3"
Area: 63 sq. ft
Counted as living area: Yes

Heated: Yes
Finished: Yes
Enclosed: Yes
Contiguous: Yes
Permitted: Yes
Wet space: No
Addition: No
Conversion: No

16 Floor 2 - Bath



Dimensions: 4'9" x 6'11"
Area: 32 sq. ft
Counted as living area: Yes

Heated: Yes
Finished: Yes
Enclosed: Yes
Contiguous: Yes
Permitted: Yes
Wet space: Yes
Addition: No
Conversion: No

17 Floor 2 - Entry



Dimensions: 22'2" x 7'4"
Area: 167 sq. ft
Counted as living area: Yes

Heated: Yes
Finished: Yes
Enclosed: Yes
Contiguous: Yes
Permitted: Yes
Wet space: No
Addition: No
Conversion: No

18 Floor 2 - Bedroom



Dimensions: 9'3" x 11'3"
Area: 104 sq. ft
Counted as living area: Yes

Heated: Yes
Finished: Yes
Enclosed: Yes
Contiguous: Yes
Permitted: Yes
Wet space: No
Addition: No
Conversion: No

19 Floor 2 - Living Room



Dimensions: 23'2" x 11'10"
Area: 285 sq. ft
Counted as living area: Yes

Heated: Yes
Finished: Yes
Enclosed: Yes
Contiguous: Yes
Permitted: Yes
Wet space: No
Addition: No
Conversion: No

20 Floor 2 - Primary Bedroom



Dimensions: 17'5" x 11'3"
Area: 143 sq. ft
Counted as living area: Yes

Heated: Yes
Finished: Yes
Enclosed: Yes
Contiguous: Yes
Permitted: Yes
Wet space: No
Addition: No
Conversion: No

21 Floor 2 - Bedroom



Dimensions: 16'3" x 11'10"
Area: 192 sq. ft
Counted as living area: Yes

Heated: Yes
Finished: Yes
Enclosed: Yes
Contiguous: Yes
Permitted: Yes
Wet space: No
Addition: No
Conversion: No