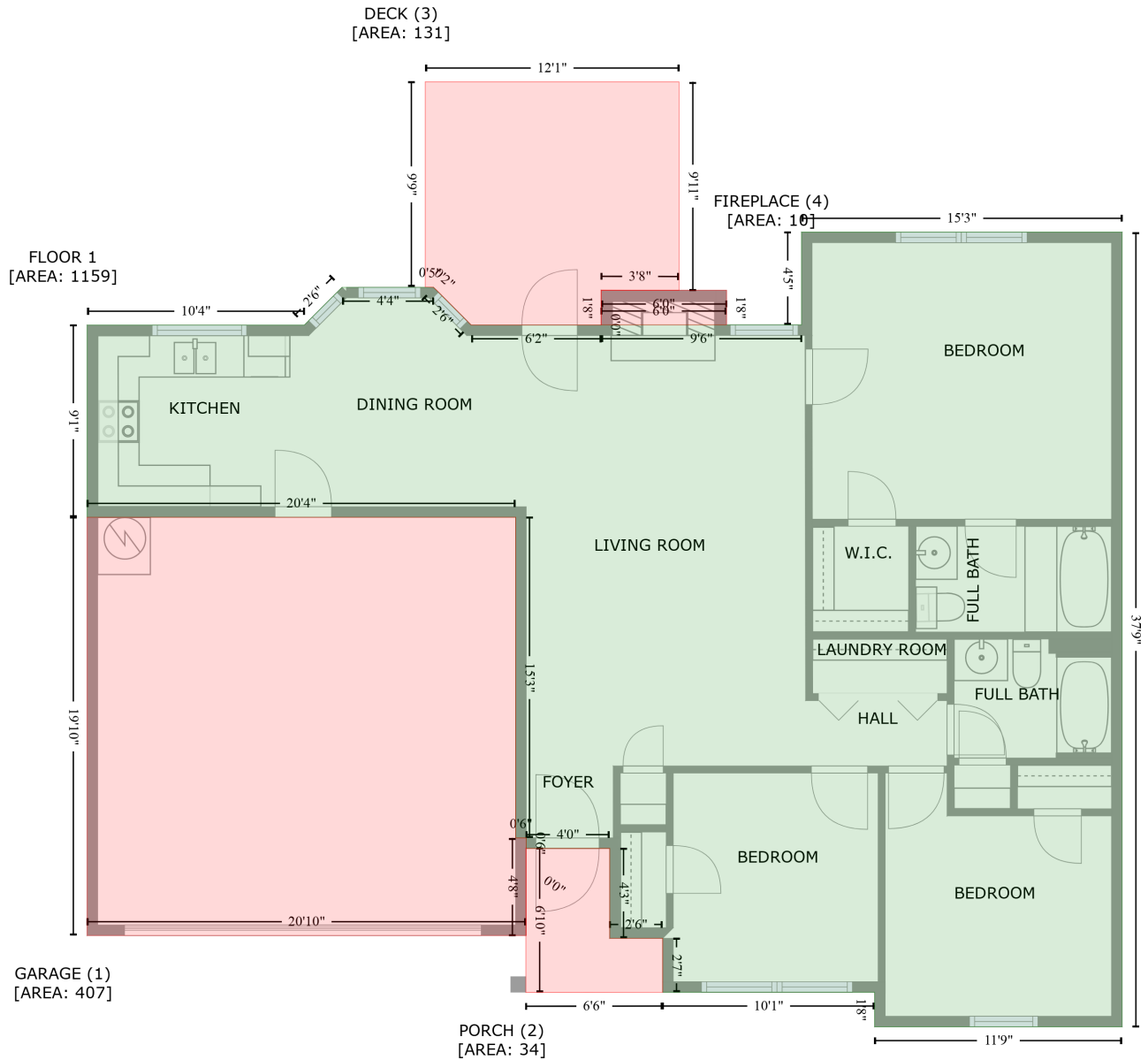


215 Long Creek Parkway, Coulwood, Charlotte, Mecklenburg County, North Carolina, United States, 28214

Gross Living Area: 1159 sq. ft



Space	Area (sq. ft)	Calculation <small>Coordinate Polygon Area Algorithm using inches</small>
FLOOR 1 (Living area)	1159	$ \begin{aligned} & -((246.8 + 240.8) * (517.7 - 517.7) + (240.8 + 240.8) * (517.7 - 335.1) + (240.8 + -3.6) * (335.1 - \\ & 335.1) + (-3.6 + -3.6) * (335.1 - 225.7) + (-3.6 + 120.2) * (225.7 - 225.7) + (120.2 + 141.7) * (225.7 \\ & - 204.2) + (141.7 + 193.9) * (204.2 - 204.2) + (193.9 + 215.3) * (204.2 - 225.6) + (215.3 + 289.5) * \\ & (225.6 - 225.6) + (289.5 + 289.5) * (225.6 - 225.6) + (289.5 + 403.8) * (225.6 - 225.6) + (403.8 + \\ & 403.8) * (225.6 - 172.8) + (403.8 + 586.6) * (172.8 - 172.8) + (586.6 + 586.6) * (172.8 - 625.3) + \\ & (586.6 + 445.5) * (625.3 - 625.3) + (445.5 + 445.5) * (625.3 - 605.6) + (445.5 + 324.6) * (605.6 - \\ & 605.6) + (324.6 + 324.6) * (605.6 - 574.9) + (324.6 + 294.4) * (574.9 - 574.9) + (294.4 + 294.4) * \end{aligned} $

215 Long Creek Parkway, Coulwood, Charlotte, Mecklenburg County, North Carolina, United States, 28214

Gross Living Area: 1159 sq. ft

Space	Area (sq. ft)	Calculation <small>Coordinate Polygon Area Algorithm using inches</small>
		$(574.9 - 523.7) + (294.4 + 246.8) * (523.7 - 523.7) + (246.8 + 246.8) * (523.7 - 517.7) * 0.5 * 0.00694$
GARAGE (Non-living area)	407	$-((240.8 + 240.8) * (335.1 - 517.7) + (240.8 + 246.8) * (517.7 - 517.7) + (246.8 + 246.8) * (517.7 - 573.3) + (246.8 + -3.6) * (573.3 - 573.3) + (-3.6 + -3.6) * (573.3 - 335.1) + (-3.6 + 240.8) * (335.1 - 335.1)) * 0.5 * 0.00694$
PORCH (Non-living area)	34	$-((246.6 + 246.8) * (523.6 - 523.7) + (246.8 + 294.4) * (523.7 - 523.7) + (294.4 + 294.4) * (523.7 - 574.9) + (294.4 + 324.6) * (574.9 - 574.9) + (324.6 + 324.6) * (574.9 - 605.6) + (324.6 + 246.6) * (605.6 - 605.7) + (246.6 + 246.6) * (605.7 - 523.6)) * 0.5 * 0.00694$
DECK (Non-living area)	131	$-((333.9 + 333.9) * (87.2 - 205.9) + (333.9 + 289.5) * (205.9 - 205.8) + (289.5 + 289.5) * (205.8 - 225.6) + (289.5 + 215.3) * (225.6 - 225.6) + (215.3 + 195.6) * (225.6 - 205.8) + (195.6 + 193.9) * (205.8 - 204.2) + (193.9 + 189.2) * (204.2 - 203.9) + (189.2 + 189.2) * (203.9 - 87.2) + (189.2 + 333.9) * (87.2 - 87.2)) * 0.5 * 0.00694$
FIREPLACE (Non-living area)	10	$-((361 + 361) * (205.8 - 225.6) + (361 + 289.5) * (225.6 - 225.6) + (289.5 + 289.5) * (225.6 - 205.8) + (289.5 + 361) * (205.8 - 205.8)) * 0.5 * 0.00694$