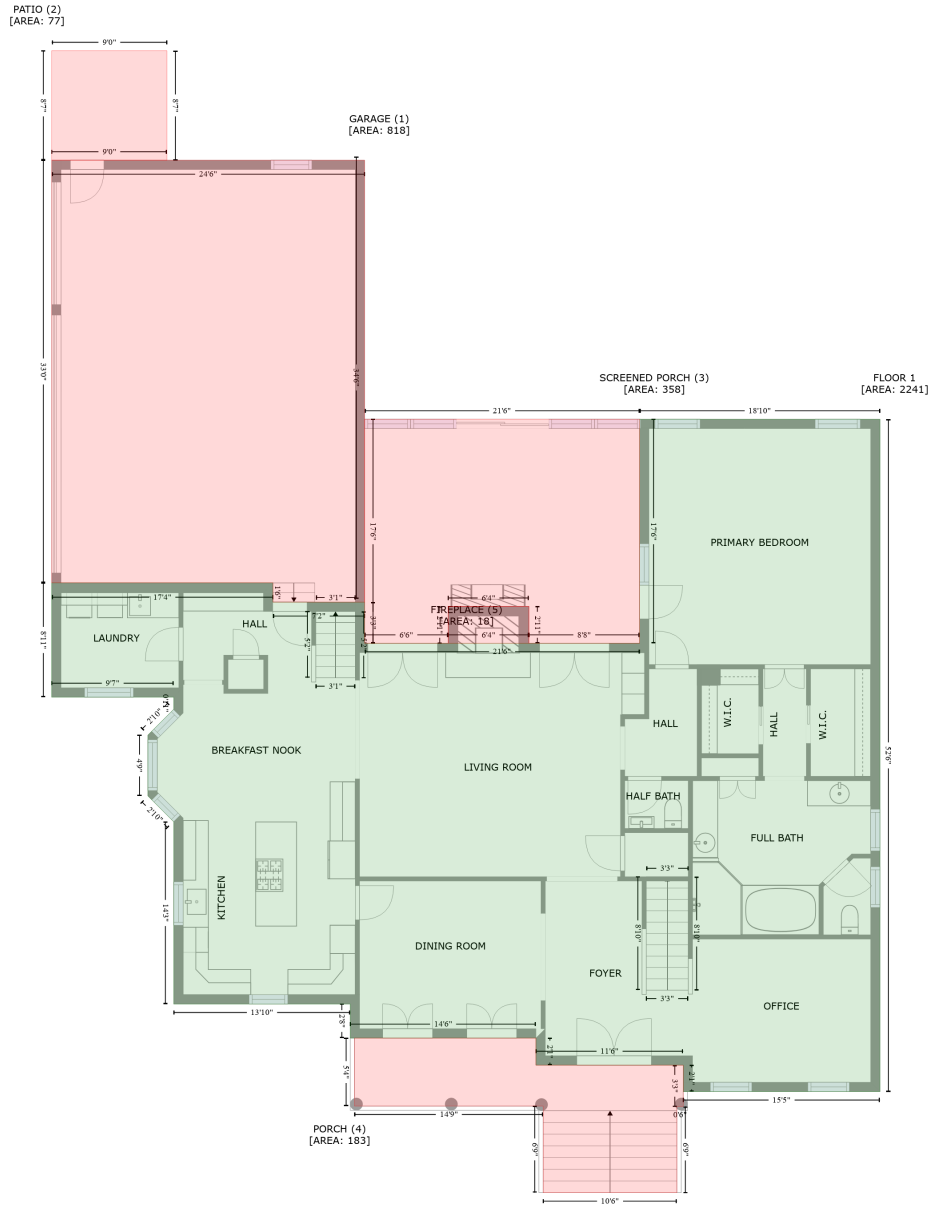


11917 James Jack Lane, Ballantyne, Charlotte, Mecklenburg County, North Carolina, United States, 28277

Gross Living Area: 3947 sq. ft



Space	Area (sq. ft)	Calculation
FLOOR 1 (Living area)	2241	Coordinate Polygon Area Algorithm using inches $-((781.9 + 781.9) * (401.4 - 1031.4) + (781.9 + 597.3) * (1031.4 - 1031.4) + (597.3 + 597.3) * (1031.4 - 1006.6) + (597.3 + 459.1) * (1006.6 - 1006.6) + (459.1 + 459.1) * (1006.6 - 981.2) + (459.1 + 284.9) * (981.2 - 981.2) + (284.9 + 284.9) * (981.2 - 949.4) + (284.9 + 119.3) * (949.4 - 949.4) + (119.3 + 119.3) * (949.4 - 778.7) + (119.3 + 95) * (778.7 - 754.4) + (95 + 95) * (754.4 - 697.3) + (95 + 119.3) * (697.3 - 673.1) + (119.3 + 119.3) * (673.1 - 661.8) + (119.3 + 4.8) * (661.8 - 661.8) + (4.8 + 4.8) * (661.8 - 554.6) + (4.8 + 212.4) * (554.6 - 554.6) + (212.4 + 212.4) * (554.6 - 572.7) + (212.4 + 298.4) * (572.7 - 572.7) + (298.4 + 298.4) * (572.7 - 611.3) + (298.4 + 556.4) *$

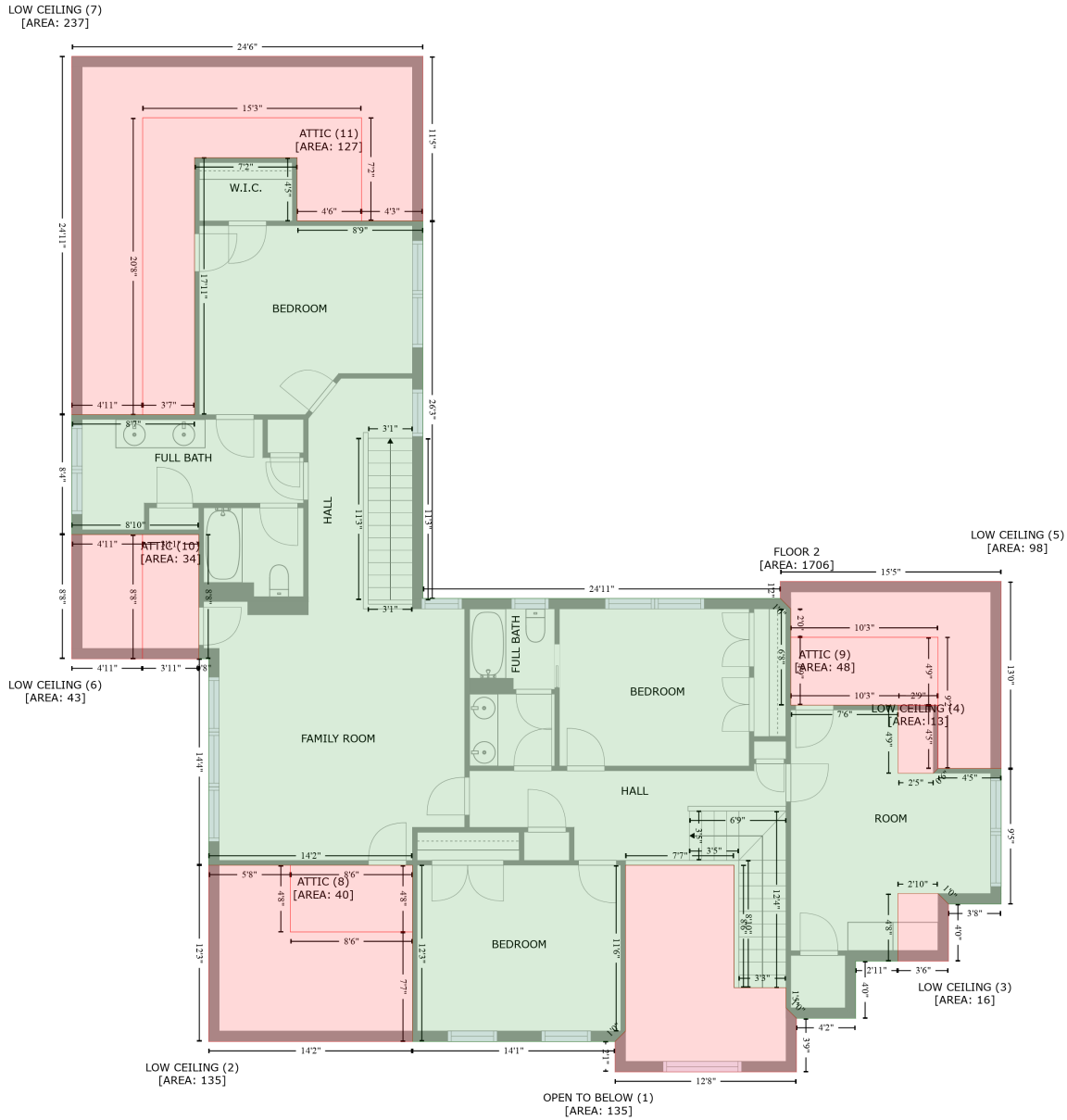
11917 James Jack Lane, Ballantyne, Charlotte, Mecklenburg County, North Carolina, United States, 28277

Gross Living Area: 3947 sq. ft

Space	Area (sq. ft)	Calculation <small>Coordinate Polygon Area Algorithm using inches</small>
		$(611.3 - 611.3) + (556.4 + 556.4) * (611.3 - 401.4) + (556.4 + 781.9) * (401.4 - 401.4) * 0.5 * 0.00694$
GARAGE (Non-living area)	818	$-((298.4 + 298.4) * (158.6 - 572.7) + (298.4 + 212.4) * (572.7 - 572.7) + (212.4 + 212.4) * (572.7 - 554.6) + (212.4 + 4.8) * (554.6 - 554.6) + (4.8 + 4.8) * (554.6 - 158.6) + (4.8 + 298.4) * (158.6 - 158.6)) * 0.5 * 0.00694$
PATIO (Non-living area)	77	$-((112.9 + 112.9) * (56 - 158.6) + (112.9 + 4.8) * (158.6 - 158.6) + (4.8 + 4.8) * (158.6 - 56) + (4.8 + 112.9) * (56 - 56)) * 0.5 * 0.00694$
SCREENED PORCH (Non-living area)	358	$-((556.4 + 556.4) * (401.4 - 611.3) + (556.4 + 452.6) * (611.3 - 611.3) + (452.6 + 452.6) * (611.3 - 576.7) + (452.6 + 376.7) * (576.7 - 576.7) + (376.7 + 376.7) * (576.7 - 611.3) + (376.7 + 298.4) * (611.3 - 611.3) + (298.4 + 298.4) * (611.3 - 401.4) + (298.4 + 556.4) * (401.4 - 401.4)) * 0.5 * 0.00694$
PORCH (Non-living area)	183	$-((459.1 + 459.1) * (981.2 - 1006.6) + (459.1 + 597.3) * (1006.6 - 1006.6) + (597.3 + 597.3) * (1006.6 - 1045.3) + (597.3 + 591.4) * (1045.3 - 1045.3) + (591.4 + 591.4) * (1045.3 - 1126.1) + (591.4 + 465.9) * (1126.1 - 1126.1) + (465.9 + 465.9) * (1126.1 - 1045) + (465.9 + 288.9) * (1045 - 1045) + (288.9 + 288.9) * (1045 - 981.2) + (288.9 + 459.1) * (981.2 - 981.2)) * 0.5 * 0.00694$
FIREPLACE (Non-living area)	18	$-((452.6 + 452.6) * (576.7 - 611.3) + (452.6 + 376.7) * (611.3 - 611.3) + (376.7 + 376.7) * (611.3 - 576.7) + (376.7 + 452.6) * (576.7 - 576.7)) * 0.5 * 0.00694$

11917 James Jack Lane, Ballantyne, Charlotte, Mecklenburg County, North Carolina, United States, 28277

Gross Living Area: 3947 sq. ft



Space	Area (sq. ft)	Calculation
FLOOR 2 (Living area)	1706	Coordinate Polygon Area Algorithm using inches $-((193.2 + 193.2) * (240.6 - 293.5) + (193.2 + 298.4) * (293.5 - 293.5) + (298.4 + 298.4) * (293.5 - 608.7) + (298.4 + 597.2) * (608.7 - 608.7) + (597.2 + 606) * (608.7 - 617.4) + (606 + 606) * (617.4 - 697.8) + (606 + 695.7) * (697.8 - 697.8) + (695.7 + 695.7) * (697.8 - 754.7) + (695.7 + 725.1) * (754.7 - 754.7) + (725.1 + 729.1) * (754.7 - 750.7) + (729.1 + 781.9) * (750.7 - 750.7) + (781.9 + 781.9) * (750.7 - 863.8) + (781.9 + 737.9) * (863.8 - 863.8) + (737.9 + 729.1) * (863.8 - 855.1) + (729.1 + 695.5) * (855.1 - 855.1) + (695.5 + 695.5) * (855.1 - 911.5) + (695.5 + 660.3) * (911.5 - 911.5) + (660.3 + 660.3) * (911.5 - 959.3) + (660.3 + 610.7) * (959.3 - 959.3) + (610.7 +$

11917 James Jack Lane, Ballantyne, Charlotte, Mecklenburg County, North Carolina, United States, 28277

Gross Living Area: 3947 sq. ft

Space	Area (sq. ft)	Calculation
		Coordinate Polygon Area Algorithm using inches
		$602 * (959.3 - 950.5) + (602 + 602) * (950.5 - 933.7) + (602 + 558.6) * (933.7 - 933.7) + (558.6 + 558.6) * (933.7 - 831.4) + (558.6 + 467.8) * (831.4 - 831.4) + (467.8 + 467.8) * (831.4 - 969.9) + (467.8 + 459.1) * (969.9 - 978.6) + (459.1 + 289.6) * (978.6 - 978.6) + (289.6 + 289.6) * (978.6 - 831.4) + (289.6 + 119.3) * (831.4 - 831.4) + (119.3 + 119.3) * (831.4 - 659.2) + (119.3 + 111) * (659.2 - 659.2) + (111 + 111) * (659.2 - 555.3) + (111 + 4.8) * (555.3 - 555.3) + (4.8 + 4.8) * (555.3 - 455.2) + (4.8 + 107.4) * (455.2 - 455.2) + (107.4 + 107.4) * (455.2 - 240.6) + (107.4 + 193.2) * (240.6 - 240.6) * 0.5 * 0.00694$
OPEN TO BELOW (Non-living area)	135	$-((558.6 + 558.6) * (831.4 - 933.7) + (558.6 + 602) * (933.7 - 933.7) + (602 + 602) * (933.7 - 950.5) + (602 + 610.7) * (950.5 - 959.3) + (610.7 + 610.7) * (959.3 - 1004) + (610.7 + 459.1) * (1004 - 1004) + (459.1 + 459.1) * (1004 - 978.6) + (459.1 + 467.8) * (978.6 - 969.9) + (467.8 + 467.8) * (969.9 - 831.4) + (467.8 + 558.6) * (831.4 - 831.4)) * 0.5 * 0.00694$
LOW CEILING (Non-living area)	135	$-((187.5 + 187.5) * (831.4 - 887.1) + (187.5 + 289.6) * (887.1 - 887.1) + (289.6 + 289.6) * (887.1 - 978.6) + (289.6 + 119.3) * (978.6 - 978.6) + (119.3 + 119.3) * (978.6 - 831.4) + (119.3 + 187.5) * (831.4 - 831.4)) * 0.5 * 0.00694$
LOW CEILING (Non-living area)	16	$-((729.1 + 737.9) * (855.1 - 863.8) + (737.9 + 737.9) * (863.8 - 911.5) + (737.9 + 695.5) * (911.5 - 911.5) + (695.5 + 695.5) * (911.5 - 855.1) + (695.5 + 729.1) * (855.1 - 855.1)) * 0.5 * 0.00694$
LOW CEILING (Non-living area)	13	$-((729.1 + 729.1) * (697.8 - 750.7) + (729.1 + 725.1) * (750.7 - 754.7) + (725.1 + 695.7) * (754.7 - 754.7) + (695.7 + 695.7) * (754.7 - 697.8) + (695.7 + 729.1) * (697.8 - 697.8)) * 0.5 * 0.00694$
LOW CEILING (Non-living area)	98	$-((781.9 + 781.9) * (594.5 - 750.7) + (781.9 + 729.1) * (750.7 - 750.7) + (729.1 + 729.1) * (750.7 - 641.1) + (729.1 + 606) * (641.1 - 641.1) + (606 + 606) * (641.1 - 617.4) + (606 + 597.2) * (617.4 - 608.7) + (597.2 + 597.2) * (608.7 - 594.5) + (597.2 + 781.9) * (594.5 - 594.5)) * 0.5 * 0.00694$
LOW CEILING (Non-living area)	43	$-((63.9 + 63.9) * (555.3 - 659.2) + (63.9 + 4.8) * (659.2 - 659.2) + (4.8 + 4.8) * (659.2 - 555.3) + (4.8 + 63.9) * (555.3 - 555.3)) * 0.5 * 0.00694$
LOW CEILING (Non-living area)	237	$-((298.4 + 298.4) * (156 - 293.5) + (298.4 + 247.1) * (293.5 - 293.5) + (247.1 + 247.1) * (293.5 - 207.4) + (247.1 + 64) * (207.4 - 207.4) + (64 + 64) * (207.4 - 455.2) + (64 + 4.8) * (455.2 - 455.2) + (4.8 + 4.8) * (455.2 - 156) + (4.8 + 298.4) * (156 - 156)) * 0.5 * 0.00694$
ATTIC (Non-living area)	40	$-((289.6 + 289.6) * (831.4 - 887.1) + (289.6 + 187.5) * (887.1 - 887.1) + (187.5 + 187.5) * (887.1 - 831.4) + (187.5 + 289.6) * (831.4 - 831.4)) * 0.5 * 0.00694$
ATTIC (Non-living area)	48	$-((729.1 + 729.1) * (641.1 - 697.8) + (729.1 + 606) * (697.8 - 697.8) + (606 + 606) * (697.8 - 641.1) + (606 + 729.1) * (641.1 - 641.1)) * 0.5 * 0.00694$
ATTIC (Non-living area)	34	$-((111 + 111) * (555.3 - 659.2) + (111 + 63.9) * (659.2 - 659.2) + (63.9 + 63.9) * (659.2 - 555.3) + (63.9 + 111) * (555.3 - 555.3)) * 0.5 * 0.00694$
ATTIC (Non-living area)	127	$-((247.1 + 247.1) * (207.4 - 293.5) + (247.1 + 193.2) * (293.5 - 293.5) + (193.2 + 193.2) * (293.5 - 240.6) + (193.2 + 107.4) * (240.6 - 240.6) + (107.4 + 107.4) * (240.6 - 455.2) + (107.4 + 64) * (455.2 - 455.2) + (64 + 64) * (455.2 - 207.4) + (64 + 247.1) * (207.4 - 207.4)) * 0.5 * 0.00694$