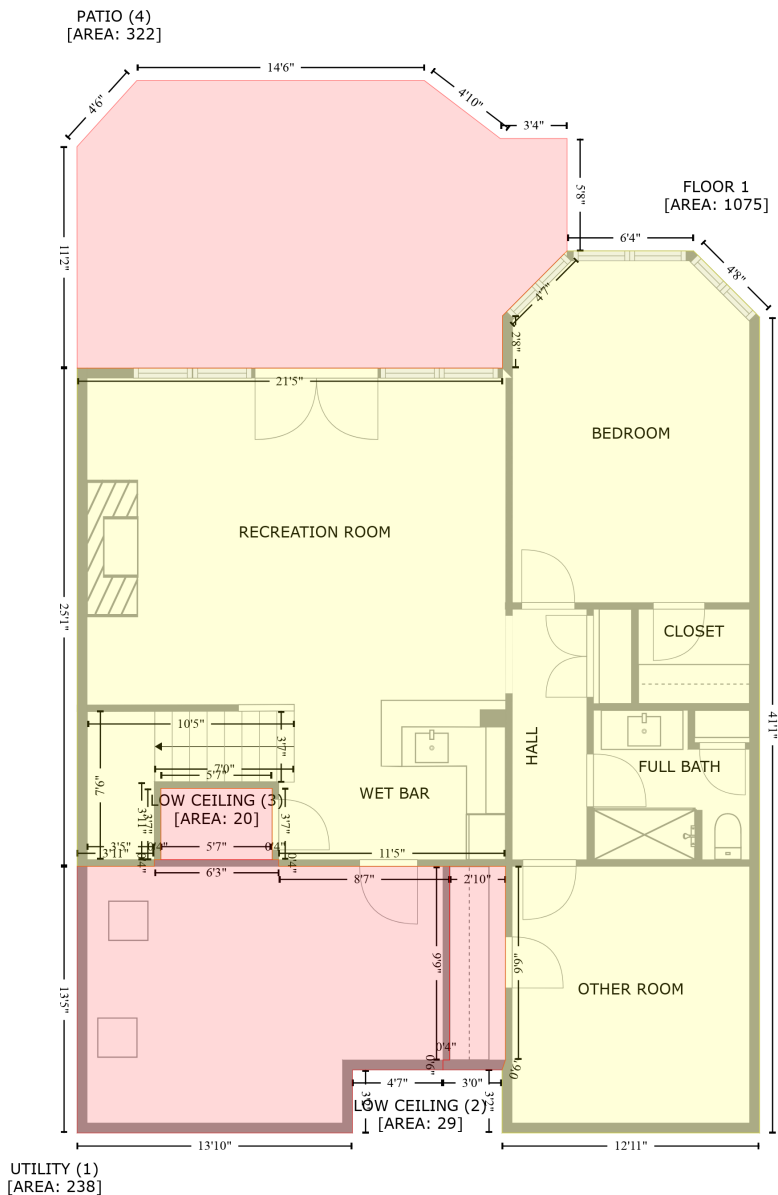


4658 Eagle Point Court, Westport, Denver, Lincoln County, North Carolina, United States, 28037

Gross Living Area: 3076 sq. ft



Space	Area (sq. ft)	Calculation
FLOOR 1 (Living area)	1075	Coordinate Polygon Area Algorithm using inches $-((389.3 + 429.2) * (250.5 - 290.4) + (429.2 + 429.2) * (290.4 - 782.9) + (429.2 + 273.8) * (782.9 - 782.9) + (273.8 + 273.8) * (782.9 - 744.8) + (273.8 + 275.8) * (744.8 - 738.8) + (275.8 + 275.8) * (738.8 - 622) + (275.8 + 139) * (622 - 622) + (139 + 139) * (622 - 618) + (139 + 135) * (618 - 618) + (135 + 135) * (618 - 574.9) + (135 + 67.9) * (574.9 - 574.9) + (67.9 + 67.9) * (574.9 - 618) + (67.9 + 63.9) * (618 - 618) + (63.9 + 63.9) * (618 - 622) + (63.9 + 17.4) * (622 - 622) + (17.4 + 17.4) * (622 - 321.2) + (17.4 + 274.1) * (321.2 - 321.2) + (274.1 + 274.1) * (321.2 - 289.6) + (274.1 + 313) * (289.6 - 250.5) + (313 + 389.3) * (250.5 - 250.5)) * 0.5 * 0.00694$

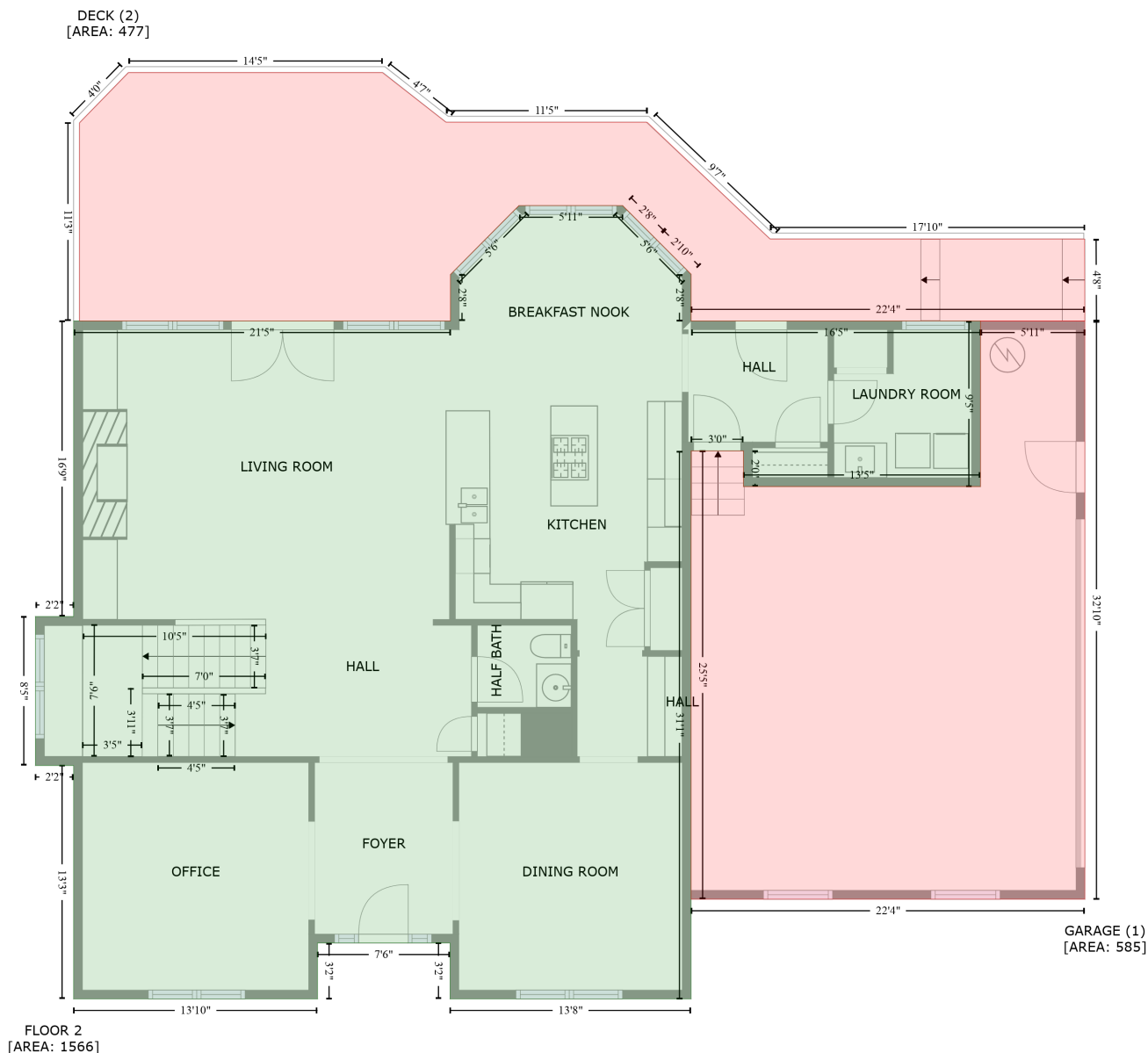
4658 Eagle Point Court, Westport, Denver, Lincoln County, North Carolina, United States, 28037

Gross Living Area: 3076 sq. ft

Space	Area (sq. ft)	Calculation <small>Coordinate Polygon Area Algorithm using inches</small>
UTILITY (Non-living area)	238	$-((139 + 139) * (618 - 622) + (139 + 242.1) * (622 - 622) + (242.1 + 242.1) * (622 - 738.8) + (242.1 + 238.1) * (738.8 - 738.8) + (238.1 + 238.1) * (738.8 - 744.8) + (238.1 + 183.5) * (744.8 - 744.8) + (183.5 + 183.5) * (744.8 - 782.9) + (183.5 + 17.4) * (782.9 - 782.9) + (17.4 + 17.4) * (782.9 - 622) + (17.4 + 63.9) * (622 - 622) + (63.9 + 63.9) * (622 - 618) + (63.9 + 139) * (618 - 618)) * 0.5 * 0.00694$
LOW CEILING (Non-living area)	29	$-((275.8 + 275.8) * (622 - 738.8) + (275.8 + 273.8) * (738.8 - 744.8) + (273.8 + 238.1) * (744.8 - 744.8) + (238.1 + 238.1) * (744.8 - 738.8) + (238.1 + 242.1) * (738.8 - 738.8) + (242.1 + 242.1) * (738.8 - 622) + (242.1 + 275.8) * (622 - 622)) * 0.5 * 0.00694$
LOW CEILING (Non-living area)	20	$-((135 + 135) * (574.9 - 618) + (135 + 67.9) * (618 - 618) + (67.9 + 67.9) * (618 - 574.9) + (67.9 + 135) * (574.9 - 574.9)) * 0.5 * 0.00694$
PATIO (Non-living area)	322	$-((226.9 + 272.8) * (147.7 - 182.6) + (272.8 + 313) * (182.6 - 182.6) + (313 + 313) * (182.6 - 250.5) + (313 + 274.1) * (250.5 - 289.6) + (274.1 + 274.1) * (289.6 - 321.2) + (274.1 + 17.4) * (321.2 - 321.2) + (17.4 + 17.2) * (321.2 - 187.6) + (17.2 + 53.4) * (187.6 - 147.7) + (53.4 + 226.9) * (147.7 - 147.7)) * 0.5 * 0.00694$

4658 Eagle Point Court, Westport, Denver, Lincoln County, North Carolina, United States, 28037

Gross Living Area: 3076 sq. ft



Space

Area (sq. ft)

Calculation Coordinate Polygon Area Algorithm using inches

FLOOR 2
(Living area)

1566

$$\begin{aligned}
 & -((391.4 + 438) * (242.7 - 289.4) + (438 + 438) * (289.4 - 321.2) + (438 + 635.2) * (321.2 - 321.2) \\
 & + (635.2 + 635.2) * (321.2 - 434) + (635.2 + 473.7) * (434 - 434) + (473.7 + 473.7) * (434 - 409.7) \\
 & + (473.7 + 438) * (409.7 - 409.7) + (438 + 438) * (409.7 - 782.9) + (438 + 273.8) * (782.9 - 782.9) \\
 & + (273.8 + 273.8) * (782.9 - 744.8) + (273.8 + 183.5) * (744.8 - 744.8) + (183.5 + 183.5) * (744.8 - \\
 & 782.9) + (183.5 + 17.4) * (782.9 - 782.9) + (17.4 + 17.4) * (782.9 - 624) + (17.4 + -8.7) * (624 - \\
 & 624) + (-8.7 + -8.7) * (624 - 522.5) + (-8.7 + 17.4) * (522.5 - 522.5) + (17.4 + 17.4) * (522.5 - \\
 & 321.2) + (17.4 + 274.1) * (321.2 - 321.2) + (274.1 + 274.1) * (321.2 - 289.6) + (274.1 + 320.7) *
 \end{aligned}$$

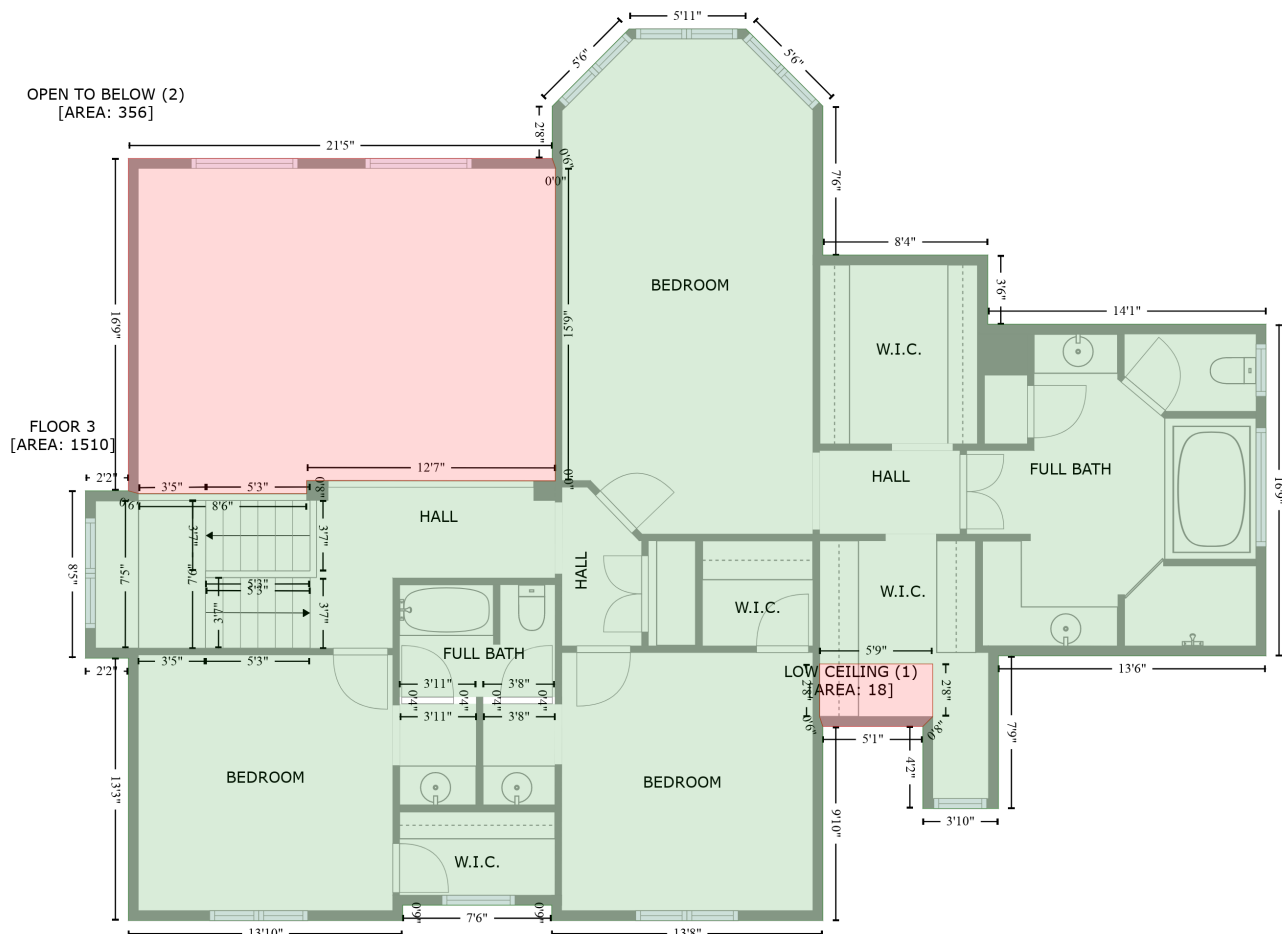
4658 Eagle Point Court, Westport, Denver, Lincoln County, North Carolina, United States, 28037

Gross Living Area: 3076 sq. ft

Space	Area (sq. ft)	Calculation <small>Coordinate Polygon Area Algorithm using inches</small>
GARAGE (Non-living area)	585	$(289.6 - 242.7) + (320.7 + 391.4) * (242.7 - 242.7)) * 0.5 * 0.00694$ $-((706.3 + 706.3) * (321.2 - 715) + (706.3 + 438) * (715 - 715) + (438 + 438) * (715 - 409.7) + (438 + 473.7) * (409.7 - 409.7) + (473.7 + 473.7) * (409.7 - 434) + (473.7 + 635.2) * (434 - 434) + (635.2 + 635.2) * (434 - 321.2) + (635.2 + 706.3) * (321.2 - 321.2)) * 0.5 * 0.00694$
DECK (Non-living area)	477	$-((227.6 + 271.1) * (152.1 - 185.9) + (271.1 + 408.2) * (185.9 - 185.9) + (408.2 + 491.8) * (185.9 - 265.4) + (491.8 + 706.1) * (265.4 - 265.4) + (706.1 + 706.3) * (265.4 - 321.2) + (706.3 + 438) * (321.2 - 321.2) + (438 + 438) * (321.2 - 289.4) + (438 + 414) * (289.4 - 265.4) + (414 + 391.4) * (265.4 - 242.7) + (391.4 + 320.7) * (242.7 - 242.7) + (320.7 + 274.1) * (242.7 - 289.6) + (274.1 + 274.1) * (289.6 - 321.2) + (274.1 + 21.4) * (321.2 - 321.2) + (21.4 + 21.4) * (321.2 - 186.3) + (21.4 + 54.7) * (186.3 - 152.1) + (54.7 + 227.6) * (152.1 - 152.1)) * 0.5 * 0.00694$

4658 Eagle Point Court, Westport, Denver, Lincoln County, North Carolina, United States, 28037

Gross Living Area: 3076 sq. ft



Space	Area (sq. ft)	Calculation
FLOOR 3 (Living area)	1510	Coordinate Polygon Area Algorithm using inches $-((391.4 + 438) * (242.7 - 289.4) + (438 + 438) * (289.4 - 379.7) + (438 + 537.9) * (379.7 - 379.7) + (537.9 + 537.9) * (379.7 - 421.6) + (537.9 + 706.5) * (421.6 - 421.6) + (706.5 + 706.5) * (421.6 - 622.5) + (706.5 + 544.4) * (622.5 - 622.5) + (544.4 + 544.4) * (622.5 - 715) + (544.4 + 498.6) * (715 - 715) + (498.6 + 498.6) * (715 - 665.3) + (498.6 + 504.6) * (665.3 - 659.3) + (504.6 + 504.6) * (659.3 - 627.4) + (504.6 + 436) * (627.4 - 627.4) + (436 + 436) * (627.4 - 659.3) + (436 + 438) * (659.3 - 665.3) + (438 + 438) * (665.3 - 782.9) + (438 + 273.8) * (782.9 - 782.9) + (273.8 + 273.8) * (782.9 - 773.6) + (273.8 + 183.5) * (773.6 - 773.6) + (183.5 + 183.5) * (773.6 - 782.9) + (183.5 + 17.4) * (782.9 - 782.9) + (17.4 + 17.4) * (782.9 - 624) + (17.4 + -8.7) * (624 - 624) + (-8.7 + -8.7) * (624 - 522.5) + (-8.7 + 17.4) * (522.5 - 522.5) + (17.4 + 23.4) * (522.5 - 524.2) + (23.4 + 125.3) * (524.2 - 524.2) + (125.3 + 125.3) * (524.2 - 516.4) + (125.3 + 276) * (516.4 - 516.5) + (276 + 276) * (516.5 - 516.3) + (276 + 276.1) * (516.3 - 327.2) + (276.1 + 276.2) * (327.2 - 327.2) + (276.2 + 274.1) * (327.2 - 321.2) + (274.1 + 274.1) * (321.2 - 289.6) + (274.1 + 320.7) * (289.6 - 242.7) + (320.7 + 391.4) * (242.7 - 242.7) * 0.5 * 0.00694 + -((228.1 + 181.6) * (647.6 - 647.6) + (181.6 + 181.6) * (647.6 - 651.6) + (181.6 + 228.1) * (651.6 - 651.6) + (228.1 + 228.1) * (651.6 - 647.6)) * 0.5 * 0.00694 + -((275.8 + 232.1) * (647.6 - 647.6) + (232.1 + 232.1) * (647.6 - 651.6) + (232.1 + 275.8) * (651.6 - 651.6) + (275.8 + 275.8) * (651.6 - 647.6)) * 0.5 * 0.00694$
LOW CEILING	18	$-((504.6 + 504.6) * (627.4 - 659.3) + (504.6 + 498.6) * (659.3 - 665.3) + (498.6 + 438) * (665.3 -$

4658 Eagle Point Court, Westport, Denver, Lincoln County, North Carolina, United States, 28037

Gross Living Area: 3076 sq. ft

Space	Area (sq. ft)	Calculation <small>Coordinate Polygon Area Algorithm using inches</small>
(Non-living area)		$665.3 + (438 + 436) * (665.3 - 659.3) + (436 + 436) * (659.3 - 627.4) + (436 + 504.6) * (627.4 - 627.4) * 0.5 * 0.00694$
OPEN TO BELOW (Non-living area)	356	$-((274.1 + 276.2) * (321.2 - 327.2) + (276.2 + 276.1) * (327.2 - 327.2) + (276.1 + 276) * (327.2 - 516.3) + (276 + 276) * (516.3 - 516.5) + (276 + 125.3) * (516.5 - 516.4) + (125.3 + 125.3) * (516.4 - 524.2) + (125.3 + 23.4) * (524.2 - 524.2) + (23.4 + 17.4) * (524.2 - 522.5) + (17.4 + 17.4) * (522.5 - 321.2) + (17.4 + 274.1) * (321.2 - 321.2)) * 0.5 * 0.00694$