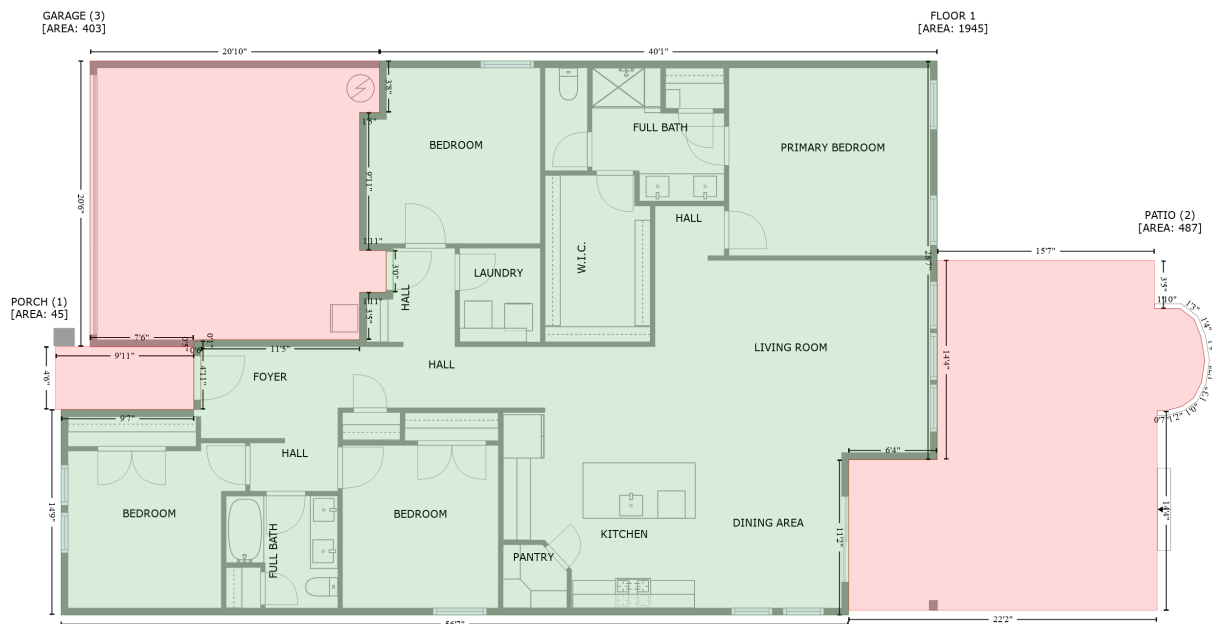


# 7522 Porrera Street, Dixie, Charlotte, Mecklenburg County, North Carolina, United States, 28214

Gross Living Area: 1945 sq. ft



Space	Area (sq. ft)	Calculation
FLOOR 1 (Living area)	1945	Coordinate Polygon Area Algorithm using inches $-((522.4 + 522.4) * (264.7 - 608.2) + (522.4 + 446) * (608.2 - 608.2) + (446 + 446) * (608.2 - 742) + (446 + -233.3) * (742 - 742) + (-233.3 + -233.3) * (742 - 565.1) + (-233.3 + -118.7) * (565.1 - 565.1) + (-118.7 + -118.7) * (565.1 - 506.1) + (-118.7 + -112.7) * (506.1 - 506.1) + (-112.7 + -112.7) * (506.1 - 504.9) + (-112.7 + 24.2) * (504.9 - 504.9) + (24.2 + 24.2) * (504.9 - 464) + (24.2 + 47.1) * (464 - 464) + (47.1 + 47.1) * (464 - 428) + (47.1 + 24.2) * (428 - 428) + (24.2 + 24.2) * (428 - 309.1) + (24.2 + 41.4) * (309.1 - 309.1) + (41.4 + 41.4) * (309.1 - 264.7) + (41.4 + 522.4) * (264.7 - 264.7)) * 0.5 * 0.00694$
PORCH (Non-living area)	45	$-((-118.7 + -118.7) * (510.9 - 565.1) + (-118.7 + -238.1) * (565.1 - 565.1) + (-238.1 + -238.1) * (565.1 - 510.9) + (-238.1 + -118.7) * (510.9 - 510.9)) * 0.5 * 0.00694$
PATIO (Non-living area)	487	$-((709.7 + 709.7) * (436.5 - 478) + (709.7 + 731.8) * (478 - 478) + (731.8 + 744) * (478 - 487.3) + (744 + 749.9) * (487.3 - 502) + (749.9 + 753.3) * (502 - 522.8) + (753.3 + 750.3) * (522.8 - 541.9) + (750.3 + 743.5) * (541.9 - 555.3) + (743.5 + 733.2) * (555.3 - 562.4) + (733.2 + 719.5) * (562.4 - 566.1) + (719.5 + 712.2) * (566.1 - 566.1) + (712.2 + 712.2) * (566.1 - 738) + (712.2 + 446) * (738 - 738) + (446 + 446) * (738 - 608.2) + (446 + 522.4) * (608.2 - 608.2) + (522.4 + 522.4) * (608.2 - 436.5) + (522.4 + 709.7) * (436.5 - 436.5)) * 0.5 * 0.00694$
GARAGE (Non-living area)	403	$-((41.4 + 41.4) * (264.7 - 309.1) + (41.4 + 24.2) * (309.1 - 309.1) + (24.2 + 24.2) * (309.1 - 428) + (24.2 + 47.1) * (428 - 428) + (47.1 + 47.1) * (428 - 464) + (47.1 + 24.2) * (464 - 464) + (24.2 + 24.2) * (464 - 504.9) + (24.2 + -112.7) * (504.9 - 504.9) + (-112.7 + -112.7) * (504.9 - 506.1) + (-112.7 + -118.7) * (506.1 - 506.1) + (-118.7 + -118.7) * (506.1 - 510.9) + (-118.7 + -208.3) * (510.9 - 510.9) + (-208.3 + -208.3) * (510.9 - 264.7) + (-208.3 + 41.4) * (264.7 - 264.7)) * 0.5 * 0.00694$