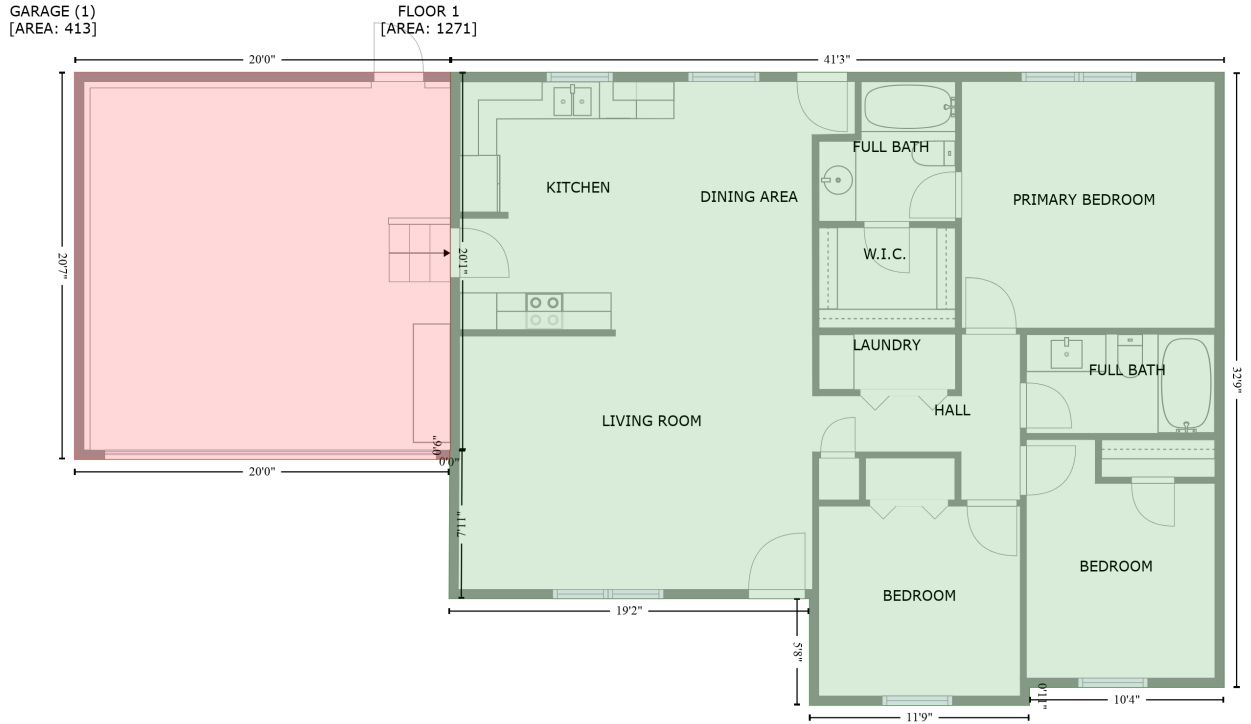


1855 Bardell Street, Lancaster, Lancaster County, South Carolina, United States, 29720

Gross Living Area: 1271 sq. ft



Space	Area (sq. ft)	Calculation <small>Coordinate Polygon Area Algorithm using inches</small>
FLOOR 1 (Living area)	1271	$-\left((730.8 + 730.8) * (-0.5 - 392.6) + (730.8 + 606.4) * (392.6 - 392.6) + (606.4 + 606.4) * (392.6 - 404) + (606.4 + 465.7) * (404 - 404) + (465.7 + 465.7) * (404 - 335.9) + (465.7 + 235.3) * (335.9 - 335.9) + (235.3 + 235.8) * (335.9 - 240.9) + (235.8 + 236.2) * (240.9 - 240.9) + (236.2 + 236.2) * (240.9 - -0.5) + (236.2 + 730.8) * (-0.5 - -0.5)\right) * 0.5 * 0.00694$
GARAGE (Non-living area)	413	$-\left((236.2 + 236.2) * (-0.5 - 240.9) + (236.2 + 235.8) * (240.9 - 240.9) + (235.8 + 235.7) * (240.9 - 246.9) + (235.7 + -4) * (246.9 - 246.9) + (-4 + -4) * (246.9 - -0.5) + (-4 + 236.2) * (-0.5 - -0.5)\right) * 0.5 * 0.00694$