

9515 Liberty Hill Drive, Mint Hill, Mecklenburg County, North Carolina, United States, 28227

Gross Living Area: 2801 sq. ft



Space	Area (sq. ft)	Calculation <small>Coordinate Polygon Area Algorithm using inches</small>
FLOOR 1 (Living area)	2084	$-((362.7 + 362.7) * (92.4 - 238.5) + (362.7 + 520.1) * (238.5 - 238.5) + (520.1 + 520.1) * (238.5 - 920.2) + (520.1 + 372) * (920.2 - 920.2) + (372 + 372) * (920.2 - 862.5) + (372 + 305.9) * (862.5 - 862.5) + (305.9 + 299.9) * (862.5 - 856.5) + (299.9 + 309) * (856.5 - 856.5) + (309 + 309) * (856.5 - 655.1) + (309 + 38.9) * (655.1 - 655.1) + (38.9 + 38.9) * (655.1 - 92.4) + (38.9 + 362.7) * (92.4 - 92.4)) * 0.5 * 0.00694$
SCREENED PORCH	160	$-((520.1 + 520.1) * (92.4 - 238.5) + (520.1 + 362.7) * (238.5 - 238.5) + (362.7 + 362.7) * (238.5 -$

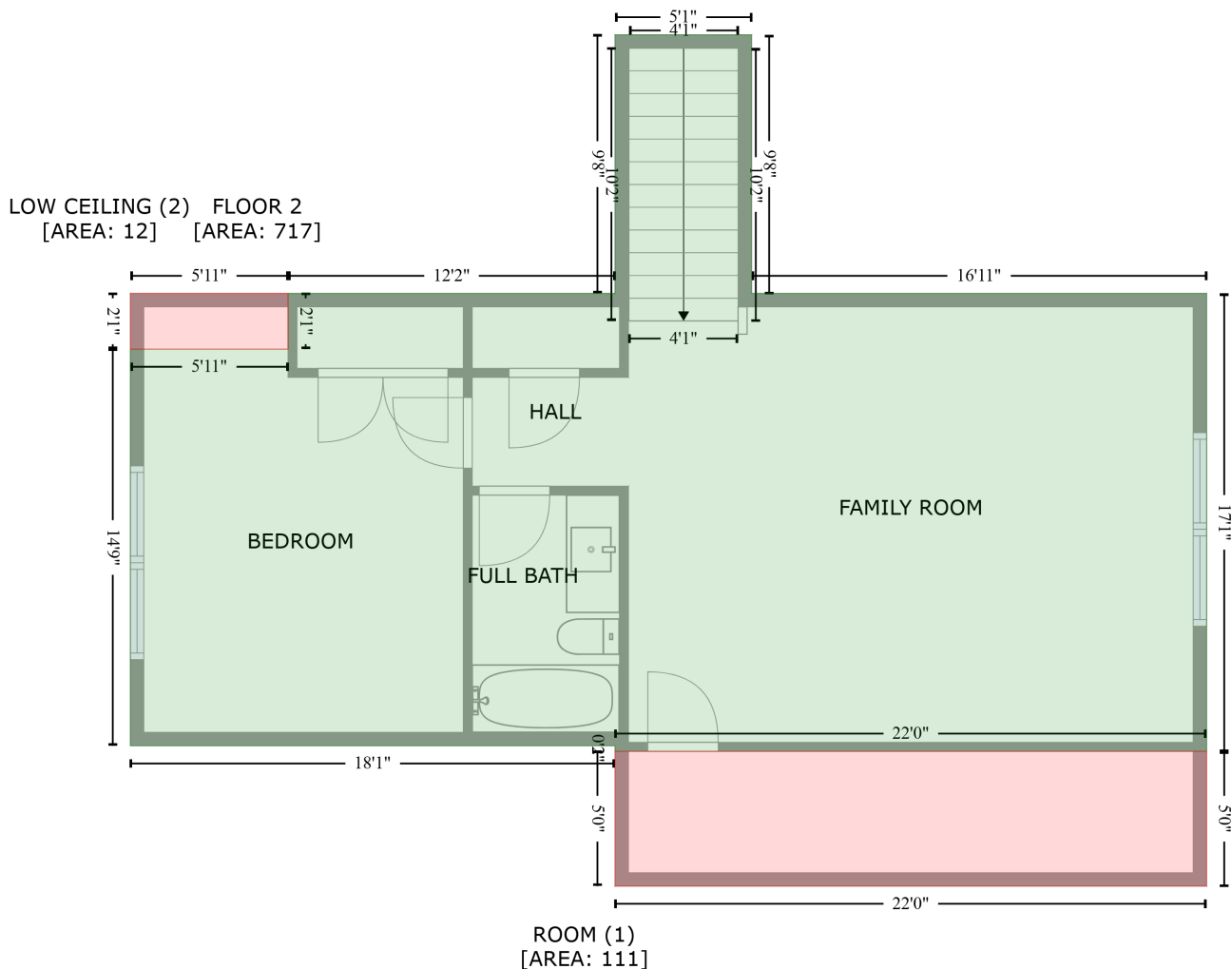
9515 Liberty Hill Drive, Mint Hill, Mecklenburg County, North Carolina, United States, 28227

Gross Living Area: 2801 sq. ft

Space	Area (sq. ft)	Calculation <small>Coordinate Polygon Area Algorithm using inches</small>
(Non-living area)		$92.4 + (362.7 + 520.1) * (92.4 - 92.4) * 0.5 * 0.00694$
PORCH (Non-living area)	41	$-((372 + 372) * (862.5 - 920.2) + (372 + 372.3) * (920.2 - 920.2) + (372.3 + 372.3) * (920.2 - 951.3) + (372.3 + 305.9) * (951.3 - 951.3) + (305.9 + 305.9) * (951.3 - 862.5) + (305.9 + 372) * (862.5 - 862.5)) * 0.5 * 0.00694$
GARAGE (Non-living area)	496	$-((309 + 309) * (655.1 - 856.5) + (309 + 299.9) * (856.5 - 856.5) + (299.9 + 305.9) * (856.5 - 862.5) + (305.9 + 305.9) * (862.5 - 920.2) + (305.9 + 38.9) * (920.2 - 920.2) + (38.9 + 38.9) * (920.2 - 655.1) + (38.9 + 309) * (655.1 - 655.1)) * 0.5 * 0.00694$

9515 Liberty Hill Drive, Mint Hill, Mecklenburg County, North Carolina, United States, 28227

Gross Living Area: 2801 sq. ft



Space	Area (sq. ft)	Calculation <small>Coordinate Polygon Area Algorithm using inches</small>
FLOOR 2 (Living area)	717	$-\left((316.6 + 316.6) * (337.5 - 453.1) + (316.6 + 520.1) * (453.1 - 453.1) + (520.1 + 520.1) * (453.1 - 657.6) + (520.1 + 255.6) * (657.6 - 657.6) + (255.6 + 255.6) * (657.6 - 655.1) + (255.6 + 38.9) * (655.1 - 655.1) + (38.9 + 38.9) * (655.1 - 477.9) + (38.9 + 109.4) * (477.9 - 477.9) + (109.4 + 109.4) * (477.9 - 453.1) + (109.4 + 255.6) * (453.1 - 453.1) + (255.6 + 255.6) * (453.1 - 337.5) + (255.6 + 316.6) * (337.5 - 337.5)\right) * 0.5 * 0.00694$
ROOM (Non-living area)	111	$-\left((520.1 + 520.1) * (657.6 - 717.8) + (520.1 + 255.6) * (717.8 - 717.8) + (255.6 + 255.6) * (717.8 - 657.6) + (255.6 + 520.1) * (657.6 - 657.6)\right) * 0.5 * 0.00694$
LOW CEILING (Non-living area)	12	$-\left((109.4 + 109.4) * (453.1 - 477.9) + (109.4 + 38.9) * (477.9 - 477.9) + (38.9 + 38.9) * (477.9 - 453.1) + (38.9 + 109.4) * (453.1 - 453.1)\right) * 0.5 * 0.00694$