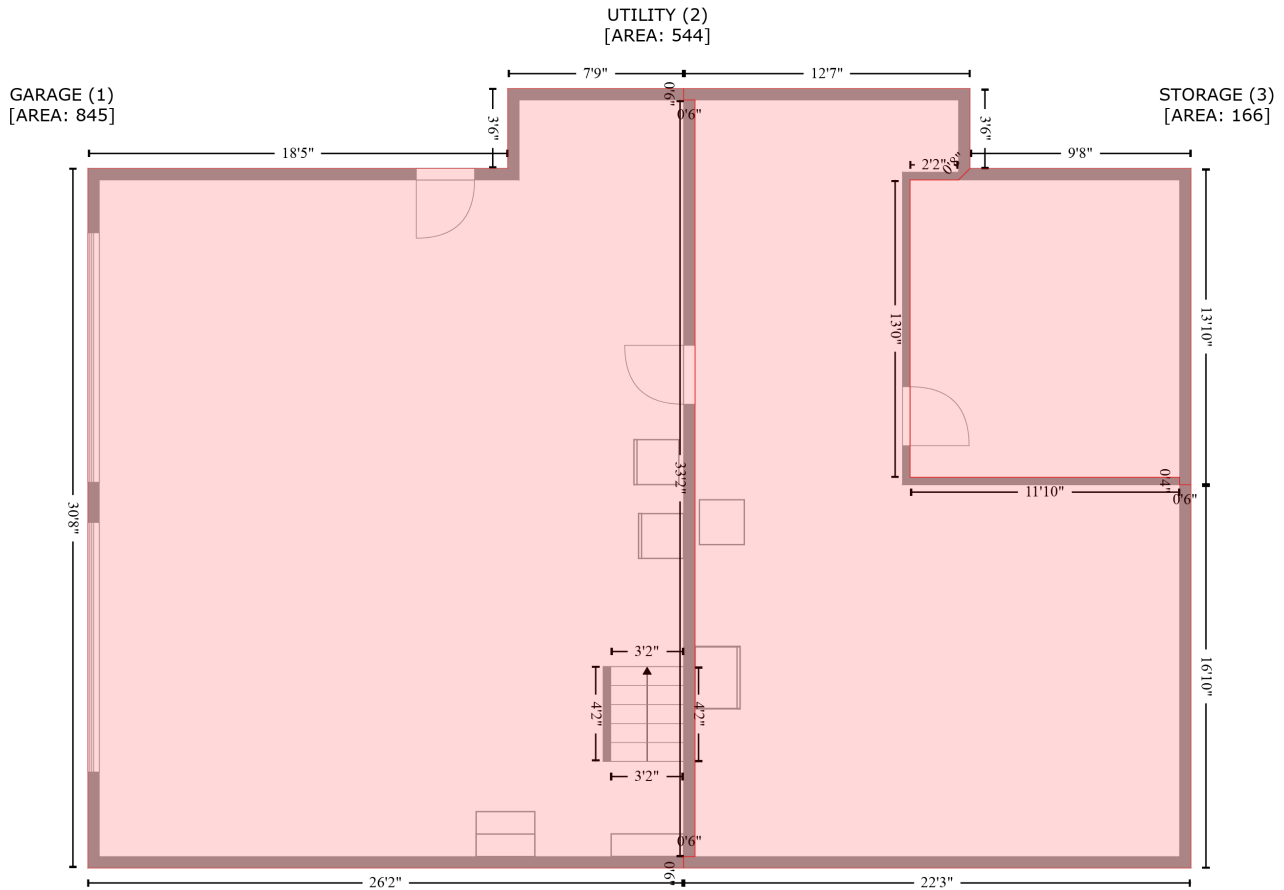


2935 Bent Twig Court, Clover, York County, South Carolina, United States, 29710

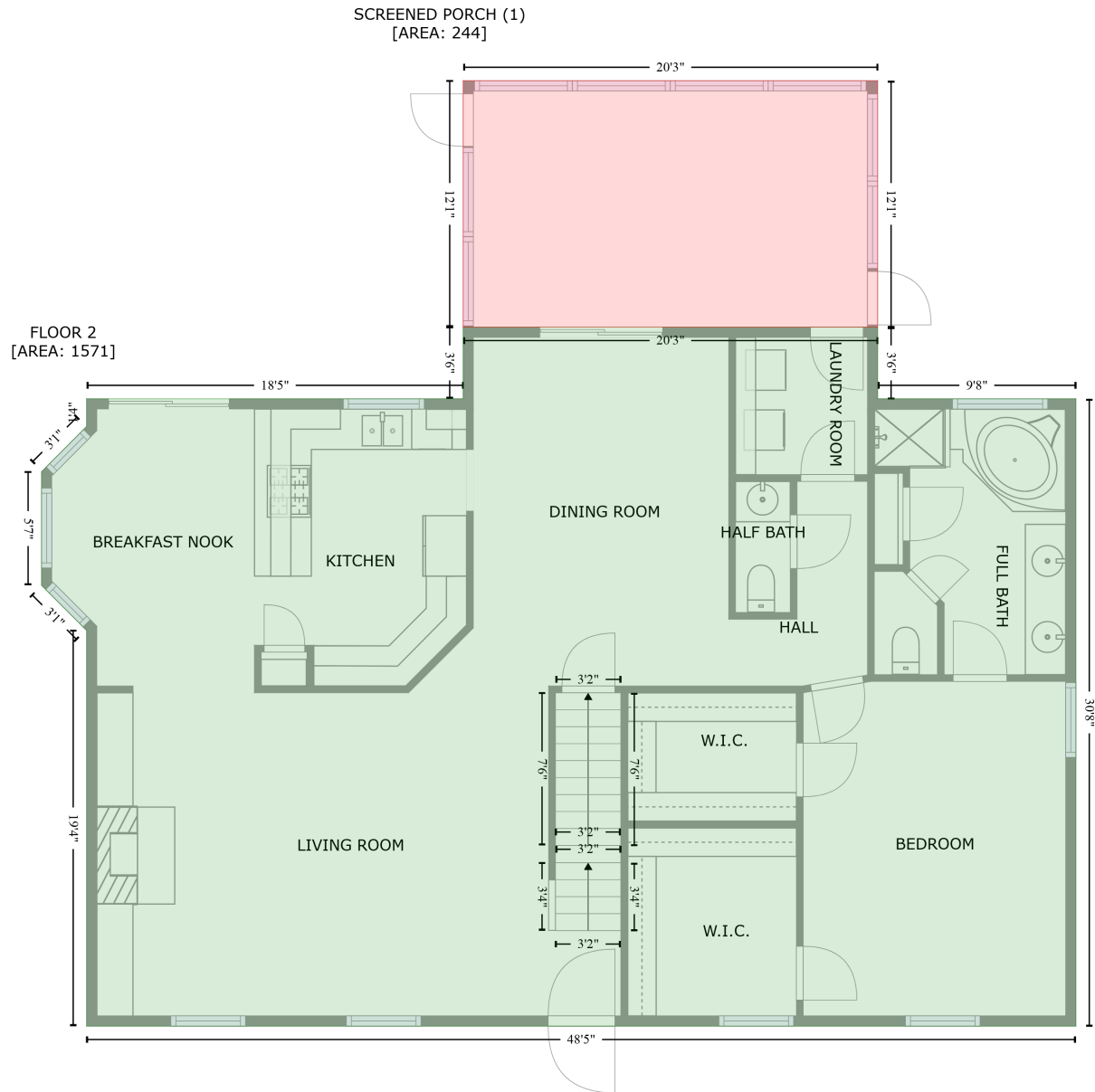
Gross Living Area: 2307 sq. ft



Space	Area (sq. ft)	Calculation <small>Coordinate Polygon Area Algorithm using inches</small>
GARAGE (Non-living area)	845	$-\left((337.8 + 337.8) * (156.5 - 162.5) + (337.8 + 343.8) * (162.5 - 162.5) + (343.8 + 343.8) * (162.5 - 560.4) + (343.8 + 337.8) * (560.4 - 560.4) + (337.8 + 337.8) * (560.4 - 566.4) + (337.8 + 24.2) * (566.4 - 566.4) + (24.2 + 24.2) * (566.4 - 198.5) + (24.2 + 245.2) * (198.5 - 198.5) + (245.2 + 245.2) * (198.5 - 156.5) + (245.2 + 337.8) * (156.5 - 156.5)\right) * 0.5 * 0.00694$
UTILITY (Non-living area)	544	$-\left((488.5 + 488.5) * (156.5 - 198.5) + (488.5 + 482.5) * (198.5 - 204.5) + (482.5 + 457) * (204.5 - 204.5) + (457 + 457) * (204.5 - 360.8) + (457 + 598.8) * (360.8 - 360.8) + (598.8 + 598.8) * (360.8 - 364.8) + (598.8 + 604.8) * (364.8 - 364.8) + (604.8 + 604.8) * (364.8 - 566.4) + (604.8 + 337.8) * (566.4 - 566.4) + (337.8 + 337.8) * (566.4 - 560.4) + (337.8 + 343.8) * (560.4 - 560.4) + (343.8 + 343.8) * (560.4 - 162.5) + (343.8 + 337.8) * (162.5 - 162.5) + (337.8 + 337.8) * (162.5 - 156.5) + (337.8 + 488.5) * (156.5 - 156.5)\right) * 0.5 * 0.00694$
STORAGE (Non-living area)	166	$-\left((604.8 + 604.8) * (198.5 - 364.8) + (604.8 + 598.8) * (364.8 - 364.8) + (598.8 + 598.8) * (364.8 - 360.8) + (598.8 + 457) * (360.8 - 360.8) + (457 + 457) * (360.8 - 204.5) + (457 + 482.5) * (204.5 - 204.5) + (482.5 + 488.5) * (204.5 - 198.5) + (488.5 + 604.8) * (198.5 - 198.5)\right) * 0.5 * 0.00694$

2935 Bent Twig Court, Clover, York County, South Carolina, United States, 29710

Gross Living Area: 2307 sq. ft



Space	Area (sq. ft)	Calculation <small>Coordinate Polygon Area Algorithm using inches</small>
FLOOR 2 (Living area)	1571	$-((488.5 + 488.5) * (156.5 - 198.5) + (488.5 + 604.8) * (198.5 - 198.5) + (604.8 + 604.8) * (198.5 - 566.4) + (604.8 + 24.2) * (566.4 - 566.4) + (24.2 + 24.2) * (566.4 - 334.3) + (24.2 + -2.3) * (334.3 - 307.9) + (-2.3 + -2.3) * (307.9 - 241.3) + (-2.3 + 24.2) * (241.3 - 214.7) + (24.2 + 24.2) * (214.7 - 198.5) + (24.2 + 245.2) * (198.5 - 198.5) + (245.2 + 245.2) * (198.5 - 156.5) + (245.2 + 488.5) * (156.5 - 156.5)) * 0.5 + 0.00694$
SCREENED PORCH	244	$-((488.5 + 488.5) * (11.9 - 156.5) + (488.5 + 245.2) * (156.5 - 156.5) + (245.2 + 245.2) * (156.5 -$

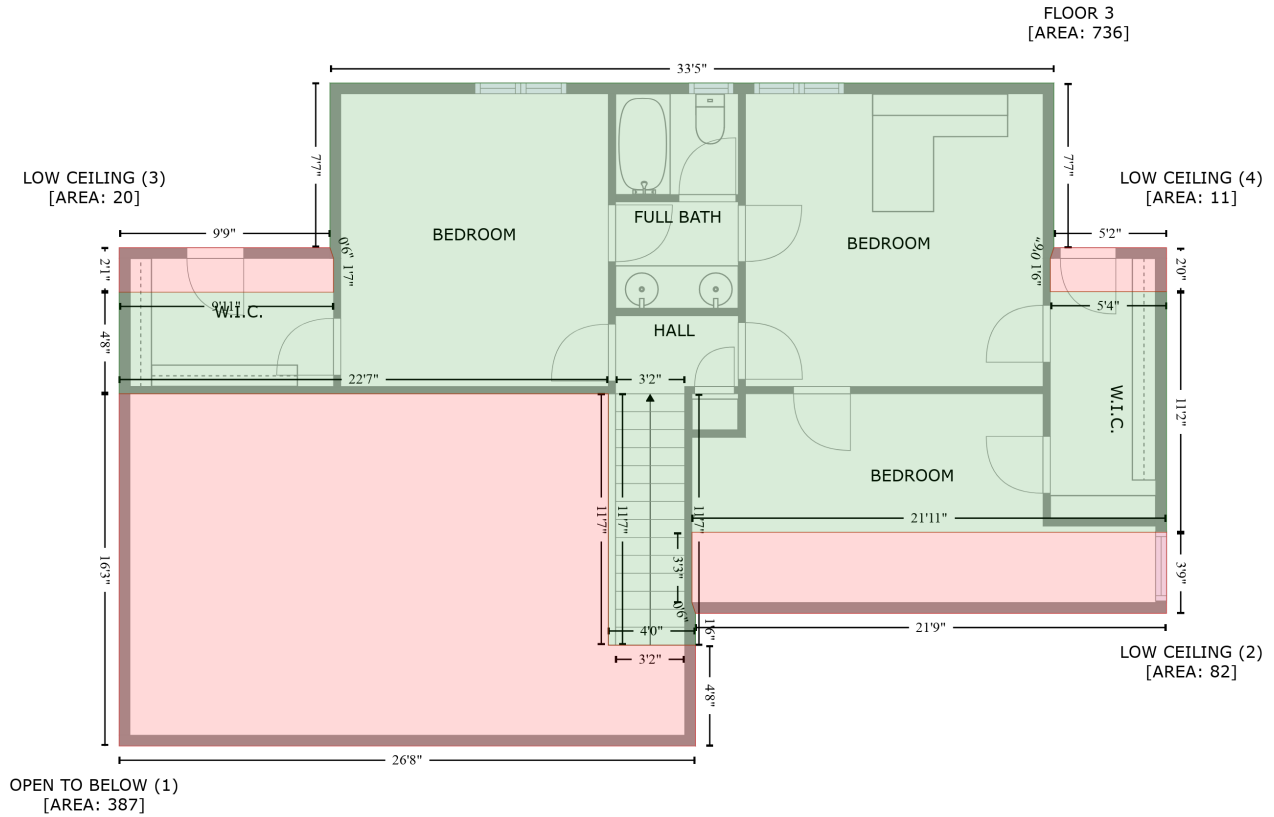
2935 Bent Twig Court, Clover, York County, South Carolina, United States, 29710

Gross Living Area: 2307 sq. ft

Space	Area (sq. ft)	Calculation <small>Coordinate Polygon Area Algorithm using inches</small>
(Non-living area)		$11.9 + (245.2 + 488.5) * (11.9 - 11.9) * 0.5 * 0.00694$

2935 Bent Twig Court, Clover, York County, South Carolina, United States, 29710

Gross Living Area: 2307 sq. ft



Space	Area (sq. ft)	Calculation <small>Coordinate Polygon Area Algorithm using inches</small>
FLOOR 3 (Living area)	736	$-((542.4 + 542.4) * (198.5 - 289.8) + (542.4 + 540.4) * (289.8 - 295.8) + (540.4 + 540.4) * (295.8 - 314.2) + (540.4 + 604.8) * (314.2 - 314.2) + (604.8 + 604.8) * (314.2 - 447.8) + (604.8 + 341.7) * (447.8 - 447.8) + (341.7 + 341.7) * (447.8 - 486.7) + (341.7 + 343.7) * (486.7 - 492.7) + (343.7 + 343.7) * (492.7 - 510.4) + (343.7 + 295.4) * (510.4 - 510.4) + (295.4 + 295.4) * (510.4 - 370.9) + (295.4 + 24.2) * (370.9 - 370.9) + (24.2 + 24.2) * (370.9 - 314.5) + (24.2 + 143) * (314.5 - 314.5) + (143 + 143) * (314.5 - 295.8) + (143 + 141) * (295.8 - 289.8) + (141 + 141) * (289.8 - 198.5) + (141 + 542.4) * (198.5 - 198.5)) * 0.5 * 0.00694$
OPEN TO BELOW (Non-living area)	387	$-((295.4 + 295.4) * (370.9 - 510.4) + (295.4 + 343.7) * (510.4 - 510.4) + (343.7 + 343.7) * (510.4 - 566.4) + (343.7 + 24.2) * (566.4 - 566.4) + (24.2 + 24.2) * (566.4 - 370.9) + (24.2 + 295.4) * (370.9 - 370.9)) * 0.5 * 0.00694$
LOW CEILING (Non-living area)	82	$-((604.8 + 604.8) * (447.8 - 492.7) + (604.8 + 343.7) * (492.7 - 492.7) + (343.7 + 341.7) * (492.7 - 486.7) + (341.7 + 341.7) * (486.7 - 447.8) + (341.7 + 604.8) * (447.8 - 447.8)) * 0.5 * 0.00694$
LOW CEILING (Non-living area)	20	$-((141 + 143) * (289.8 - 295.8) + (143 + 143) * (295.8 - 314.5) + (143 + 24.2) * (314.5 - 314.5) + (24.2 + 24.2) * (314.5 - 289.8) + (24.2 + 141) * (289.8 - 289.8)) * 0.5 * 0.00694$
LOW CEILING (Non-living area)	11	$-((604.8 + 604.8) * (289.8 - 314.2) + (604.8 + 540.4) * (314.2 - 314.2) + (540.4 + 540.4) * (314.2 - 295.8) + (540.4 + 542.4) * (295.8 - 289.8) + (542.4 + 604.8) * (289.8 - 289.8)) * 0.5 * 0.00694$