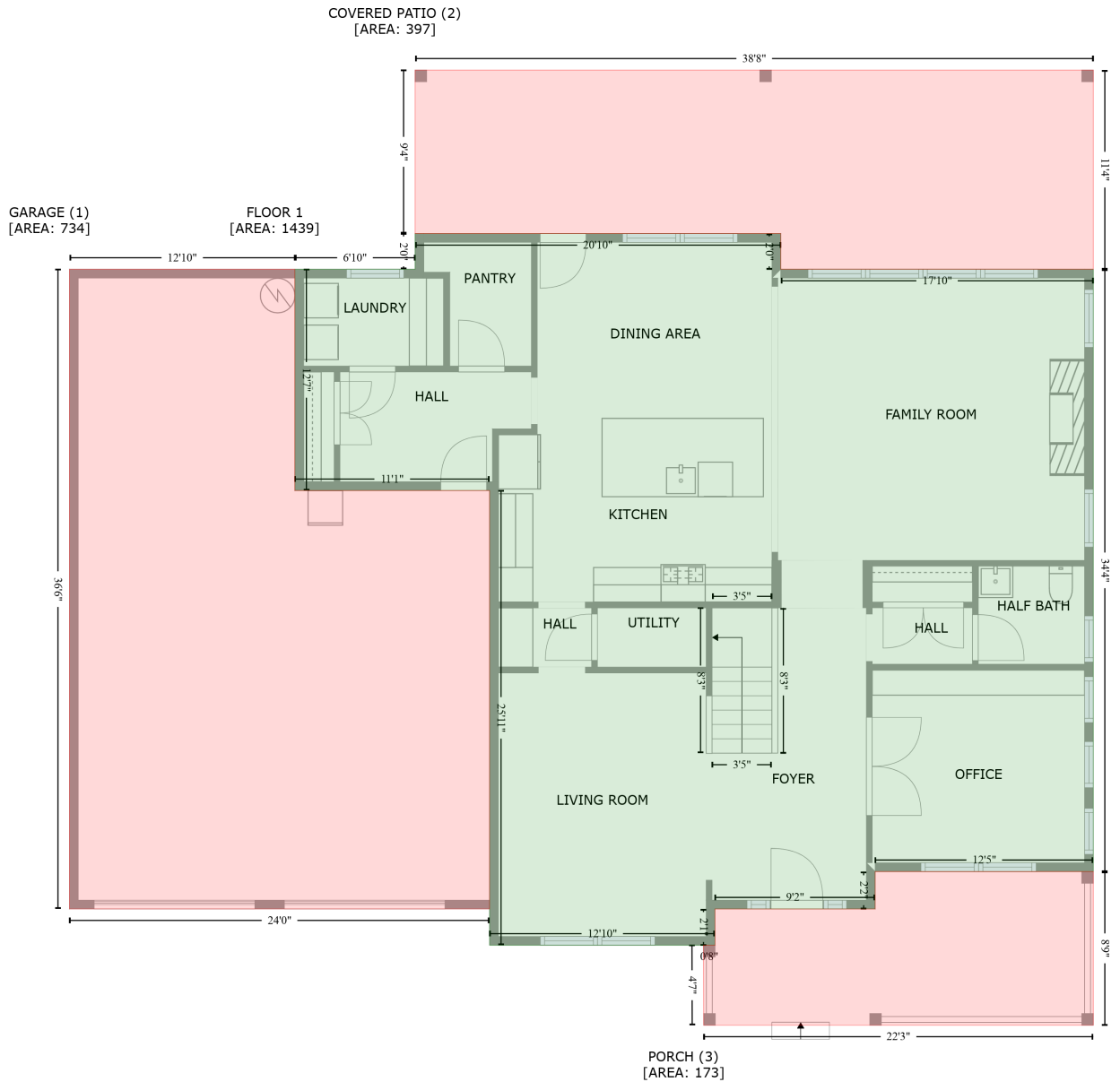


1426 Porch Wisdom Court, Fort Mill, York County, South Carolina, United States, 29708

Gross Living Area: 3127 sq. ft



Space	Area (sq. ft)	Calculation <small>Coordinate Polygon Area Algorithm using inches</small>
FLOOR 1 (Living area)	1439	$ \begin{aligned} & -((606.2 + 606.2) * (211.5 - 235.9) + (606.2 + 820.2) * (235.9 - 235.9) + (820.2 + 820.2) * (235.9 - \\ & 647.9) + (820.2 + 670.8) * (647.9 - 647.9) + (670.8 + 670.8) * (647.9 - 673.5) + (670.8 + 561.1) * \\ & (673.5 - 673.5) + (561.1 + 561.1) * (673.5 - 698.3) + (561.1 + 406.8) * (698.3 - 698.3) + (406.8 + \\ & 406.8) * (698.3 - 387.2) + (406.8 + 273.5) * (387.2 - 387.2) + (273.5 + 273.5) * (387.2 - 235.9) + \\ & (273.5 + 355.8) * (235.9 - 235.9) + (355.8 + 355.8) * (235.9 - 211.5) + (355.8 + 606.2) * (211.5 - \\ & 211.5)) * 0.5 * 0.00694 \end{aligned} $

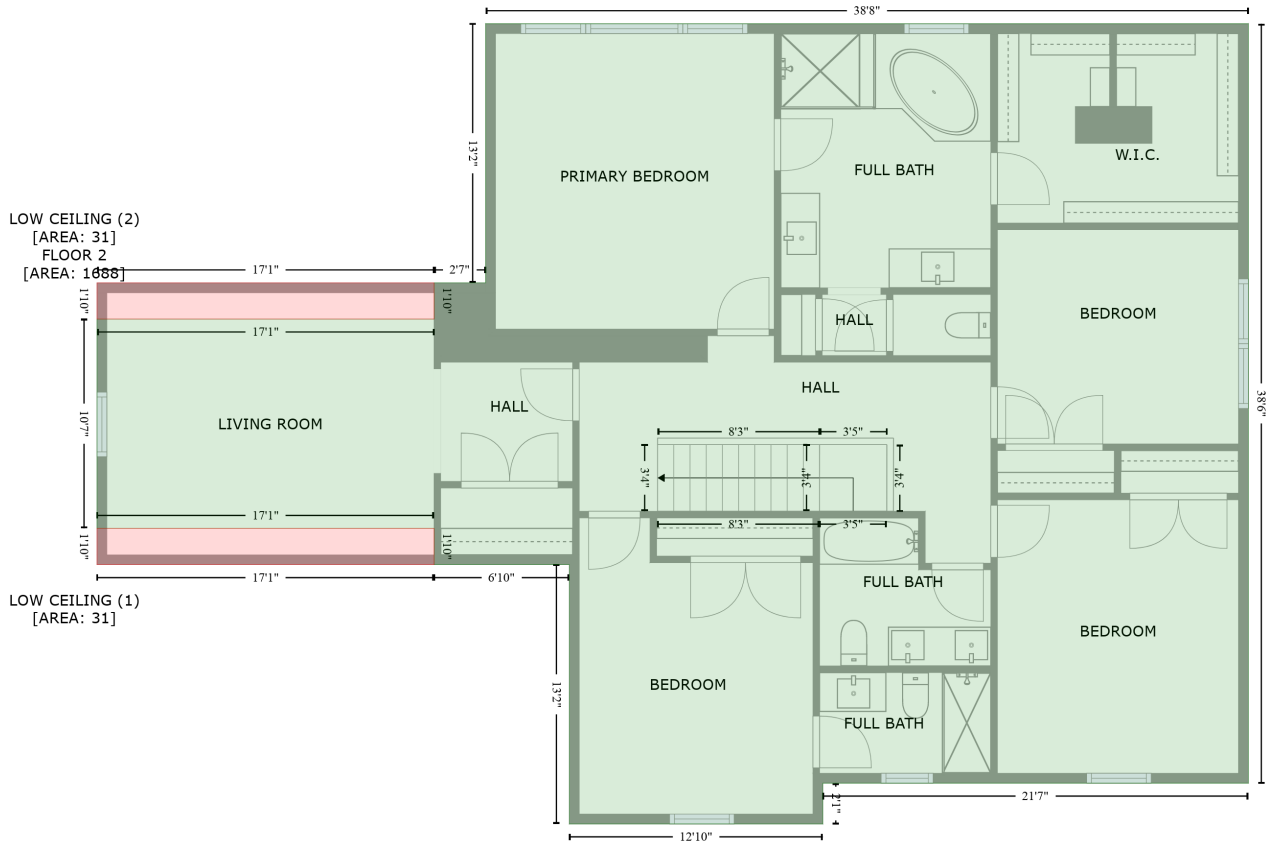
1426 Porch Wisdom Court, Fort Mill, York County, South Carolina, United States, 29708

Gross Living Area: 3127 sq. ft

Space	Area (sq. ft)	Calculation <small>Coordinate Polygon Area Algorithm using inches</small>
GARAGE (Non-living area)	734	$-\left((273.5 + 273.5) * (235.9 - 387.2) + (273.5 + 406.8) * (387.2 - 387.2) + (406.8 + 406.8) * (387.2 - 673.5) + (406.8 + 119.2) * (673.5 - 673.5) + (119.2 + 119.2) * (673.5 - 235.9) + (119.2 + 273.5) * (235.9 - 235.9)\right) * 0.5 * 0.00694$
COVERED PATIO (Non-living area)	397	$-\left((820.2 + 820.2) * (99.6 - 235.9) + (820.2 + 606.2) * (235.9 - 235.9) + (606.2 + 606.2) * (235.9 - 211.5) + (606.2 + 355.8) * (211.5 - 211.5) + (355.8 + 355.8) * (211.5 - 99.6) + (355.8 + 820.2) * (99.6 - 99.6)\right) * 0.5 * 0.00694$
PORCH (Non-living area)	173	$-\left((820.2 + 820.2) * (647.9 - 753) + (820.2 + 553.4) * (753 - 753) + (553.4 + 553.3) * (753 - 698.3) + (553.3 + 561.2) * (698.3 - 698.3) + (561.2 + 561.1) * (698.3 - 673.5) + (561.1 + 670.8) * (673.5 - 673.5) + (670.8 + 670.8) * (673.5 - 647.9) + (670.8 + 820.2) * (647.9 - 647.9)\right) * 0.5 * 0.00694$

1426 Porch Wisdom Court, Fort Mill, York County, South Carolina, United States, 29708

Gross Living Area: 3127 sq. ft



Space	Area (sq. ft)	Calculation <small>Coordinate Polygon Area Algorithm using inches</small>
FLOOR 2 (Living area)	1688	$-\left((820.2 + 820.2) * (211.5 - 673.5) + (820.2 + 561.1) * (673.5 - 673.5) + (561.1 + 561.1) * (673.5 - 698.3) + (561.1 + 406.8) * (698.3 - 698.3) + (406.8 + 406.8) * (698.3 - 540.6) + (406.8 + 324.4) * (540.6 - 540.6) + (324.4 + 324.4) * (540.6 - 518.5) + (324.4 + 119.2) * (518.5 - 518.5) + (119.2 + 119.2) * (518.5 - 391.1) + (119.2 + 324.4) * (391.1 - 391.1) + (324.4 + 324.4) * (391.1 - 369.1) + (324.4 + 355.8) * (369.1 - 369.1) + (355.8 + 355.8) * (369.1 - 211.5) + (355.8 + 820.2) * (211.5 - 211.5)\right) * 0.5 * 0.00694$
LOW CEILING (Non-living area)	31	$-\left((324.4 + 324.4) * (518.5 - 540.6) + (324.4 + 119.2) * (540.6 - 540.6) + (119.2 + 119.2) * (540.6 - 518.5) + (119.2 + 324.4) * (518.5 - 518.5)\right) * 0.5 * 0.00694$
LOW CEILING (Non-living area)	31	$-\left((324.4 + 324.4) * (369.1 - 391.1) + (324.4 + 119.2) * (391.1 - 391.1) + (119.2 + 119.2) * (391.1 - 369.1) + (119.2 + 324.4) * (369.1 - 369.1)\right) * 0.5 * 0.00694$