



Home report


196 Sand Shore Road, Budd Lake, Morris County, New Jersey,
United States, 07828




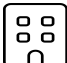
Property summary


 **1** Garages


 **3** Bedrooms

 **2** Bathrooms

 **1** Half baths

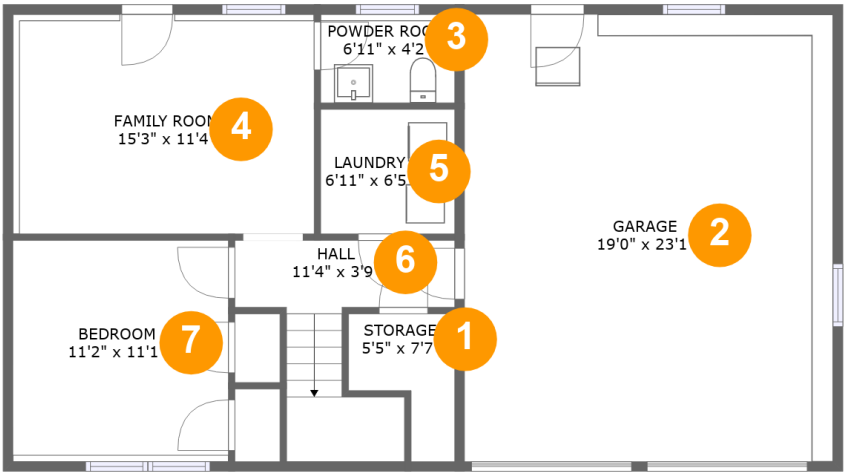
 **2** Floors

 **1,667** Gross living area sqft

 **3,144** Total sqft

Home report

196 Sand Shore Road, Budd Lake, Morris County, New Jersey,
United States, 07828

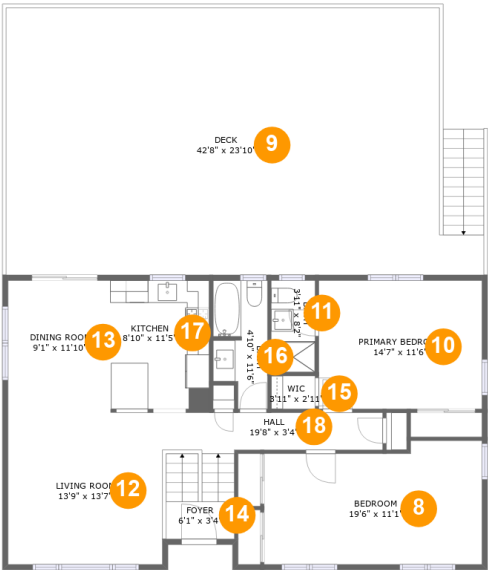


Room dimensions

Floor 1 Total sqft: 1044 Living area: 538

#		Max Dimensions	sqft	Included
1	Storage	5'5" x 7'7"	30 sq. ft	No
2	Garage	19'0" x 23'1"	439 sq. ft	No
3	Powder Room	6'11" x 4'2"	32 sq. ft	Yes
4	Family Room	15'3" x 11'4"	176 sq. ft	Yes
5	Laundry	6'11" x 6'5"	44 sq. ft	Yes
6	Hall	11'4" x 3'9"	73 sq. ft	Yes
7	Bedroom	11'2" x 11'1"	127 sq. ft	Yes

196 Sand Shore Road, Budd Lake, Morris County, New Jersey,
United States, 07828



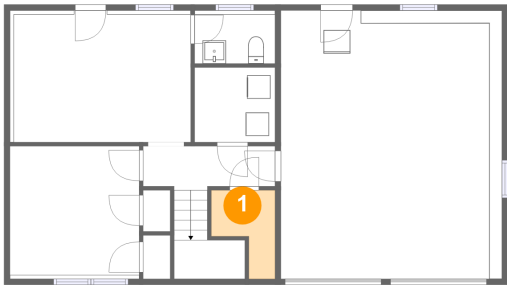
Room dimensions

Floor 2 Total sqft: 2100 Living area: 1129

#		Max Dimensions	sqft	Included
8	Bedroom	19'6" x 11'1"	200 sq. ft	Yes
9	Deck	42'8" x 23'10"	971 sq. ft	No
10	Primary Bedroom	14'7" x 11'6"	167 sq. ft	Yes
11	Bath	3'11" x 8'2"	32 sq. ft	Yes
12	Living Room	13'9" x 13'7"	187 sq. ft	Yes
13	Dining Room	9'1" x 11'10"	108 sq. ft	Yes
14	Foyer	6'1" x 3'4"	51 sq. ft	Yes
15	Wic	3'11" x 2'11"	12 sq. ft	Yes
16	Bath	4'10" x 11'6"	49 sq. ft	Yes
17	Kitchen	8'10" x 11'5"	102 sq. ft	Yes
18	Hall	19'8" x 3'4"	65 sq. ft	Yes

196 Sand Shore Road, Budd Lake, Morris County, New Jersey,
United States, 07828

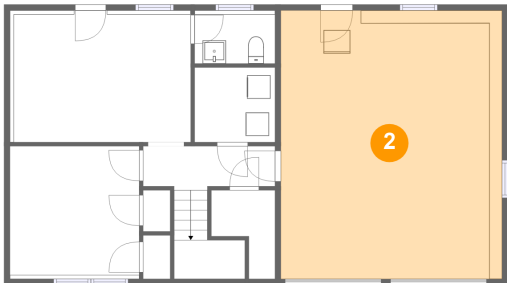
1 Floor 1 - Storage



Max Dimensions: 5'5" x 7'7"
Calculated Area: 30 sq. ft
Included: No

Heated: No
Finished: No
Enclosed: No
Contiguous: Yes
Permitted: Yes
Wet space: No
Addition: No
Conversion: No

2 Floor 1 - Garage

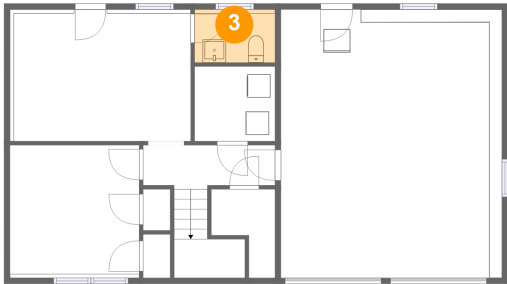


Max Dimensions: 19'0" x 23'1"
Calculated Area: 439 sq. ft
Included: No

Heated: No
Finished: No
Enclosed: Yes
Contiguous: Yes
Permitted: Yes
Wet space: No
Addition: No
Conversion: No

196 Sand Shore Road, Budd Lake, Morris County, New Jersey,
United States, 07828

3 Floor 1 - Powder Room



Max Dimensions: 6'11" x 4'2"
Calculated Area: 32 sq. ft
Included: Yes

Heated: Yes
Finished: Yes
Enclosed: Yes
Contiguous: Yes
Permitted: Yes
Wet space: Yes
Addition: No
Conversion: No

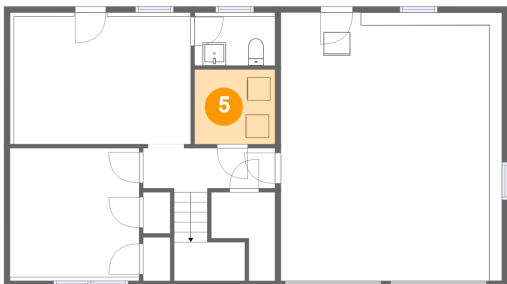
4 Floor 1 - Family Room



Max Dimensions: 15'3" x 11'4"
Calculated Area: 176 sq. ft
Included: Yes

Heated: Yes
Finished: Yes
Enclosed: Yes
Contiguous: Yes
Permitted: Yes
Wet space: No
Addition: No
Conversion: No

5 Floor 1 - Laundry



Max Dimensions: 6'11" x 6'5"
Calculated Area: 44 sq. ft
Included: Yes

Heated: Yes
Finished: Yes
Enclosed: Yes
Contiguous: Yes
Permitted: Yes
Wet space: No
Addition: No
Conversion: No

196 Sand Shore Road, Budd Lake, Morris County, New Jersey,
United States, 07828

6 Floor 1 - Hall



Max Dimensions: 11'4" x 3'9"
Calculated Area: 73 sq. ft
Included: Yes

Heated: Yes
Finished: Yes
Enclosed: Yes
Contiguous: Yes
Permitted: Yes
Wet space: No
Addition: No
Conversion: No

7 Floor 1 - Bedroom



Max Dimensions: 11'2" x 11'1"
Calculated Area: 127 sq. ft
Included: Yes

Heated: Yes
Finished: Yes
Enclosed: Yes
Contiguous: Yes
Permitted: Yes
Wet space: No
Addition: No
Conversion: No

8 Floor 2 - Bedroom

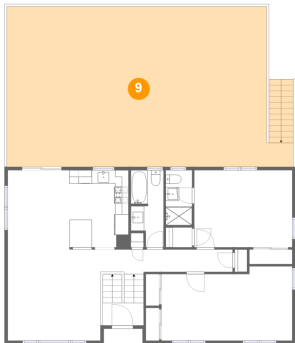


Max Dimensions: 19'6" x 11'1"
Calculated Area: 200 sq. ft
Included: Yes

Heated: Yes
Finished: Yes
Enclosed: Yes
Contiguous: Yes
Permitted: Yes
Wet space: No
Addition: No
Conversion: No

196 Sand Shore Road, Budd Lake, Morris County, New Jersey,
United States, 07828

9 Floor 2 - Deck



Max Dimensions: 42'8" x 23'10"
Calculated Area: 971 sq. ft
Included: No

Heated: No
Finished: Yes
Enclosed: No
Contiguous: Yes
Permitted: Yes
Wet space: No
Addition: No
Conversion: No

10 Floor 2 - Primary Bedroom



Max Dimensions: 14'7" x 11'6"
Calculated Area: 167 sq. ft
Included: Yes

Heated: Yes
Finished: Yes
Enclosed: Yes
Contiguous: Yes
Permitted: Yes
Wet space: No
Addition: No
Conversion: No

11 Floor 2 - Bath

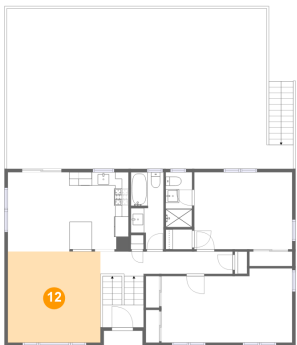


Max Dimensions: 3'11" x 8'2"
Calculated Area: 32 sq. ft
Included: Yes

Heated: Yes
Finished: Yes
Enclosed: Yes
Contiguous: Yes
Permitted: Yes
Wet space: Yes
Addition: No
Conversion: No

196 Sand Shore Road, Budd Lake, Morris County, New Jersey,
United States, 07828

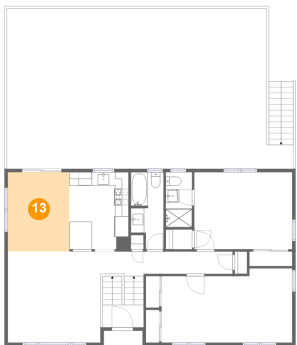
12 Floor 2 - Living Room



Max Dimensions: 13'9" x 13'7"
Calculated Area: 187 sq. ft
Included: Yes

Heated: Yes
Finished: Yes
Enclosed: Yes
Contiguous: Yes
Permitted: Yes
Wet space: No
Addition: No
Conversion: No

13 Floor 2 - Dining Room



Max Dimensions: 9'1" x 11'10"
Calculated Area: 108 sq. ft
Included: Yes

Heated: Yes
Finished: Yes
Enclosed: Yes
Contiguous: Yes
Permitted: Yes
Wet space: No
Addition: No
Conversion: No

14 Floor 2 - Foyer



Max Dimensions: 6'1" x 3'4"
Calculated Area: 51 sq. ft
Included: Yes

Heated: Yes
Finished: Yes
Enclosed: Yes
Contiguous: Yes
Permitted: Yes
Wet space: No
Addition: No
Conversion: No

196 Sand Shore Road, Budd Lake, Morris County, New Jersey,
United States, 07828

15 Floor 2 - Wic



Max Dimensions: 3'11" x 2'11"
Calculated Area: 12 sq. ft
Included: Yes

Heated: Yes
Finished: Yes
Enclosed: Yes
Contiguous: Yes
Permitted: Yes
Wet space: No
Addition: No
Conversion: No

16 Floor 2 - Bath



Max Dimensions: 4'10" x 11'6"
Calculated Area: 49 sq. ft
Included: Yes

Heated: Yes
Finished: Yes
Enclosed: Yes
Contiguous: Yes
Permitted: Yes
Wet space: Yes
Addition: No
Conversion: No

17 Floor 2 - Kitchen

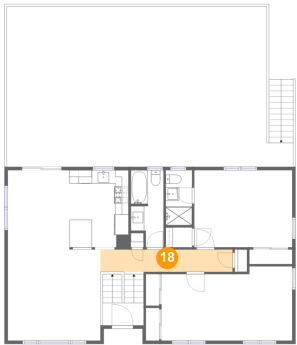


Max Dimensions: 8'10" x 11'5"
Calculated Area: 102 sq. ft
Included: Yes

Heated: Yes
Finished: Yes
Enclosed: Yes
Contiguous: Yes
Permitted: Yes
Wet space: No
Addition: No
Conversion: No

196 Sand Shore Road, Budd Lake, Morris County, New Jersey,
United States, 07828

18 Floor 2 - Hall



Max Dimensions: 19'8" x 3'4"
Calculated Area: 65 sq. ft
Included: Yes

Heated: Yes
Finished: Yes
Enclosed: Yes
Contiguous: Yes
Permitted: Yes
Wet space: No
Addition: No
Conversion: No