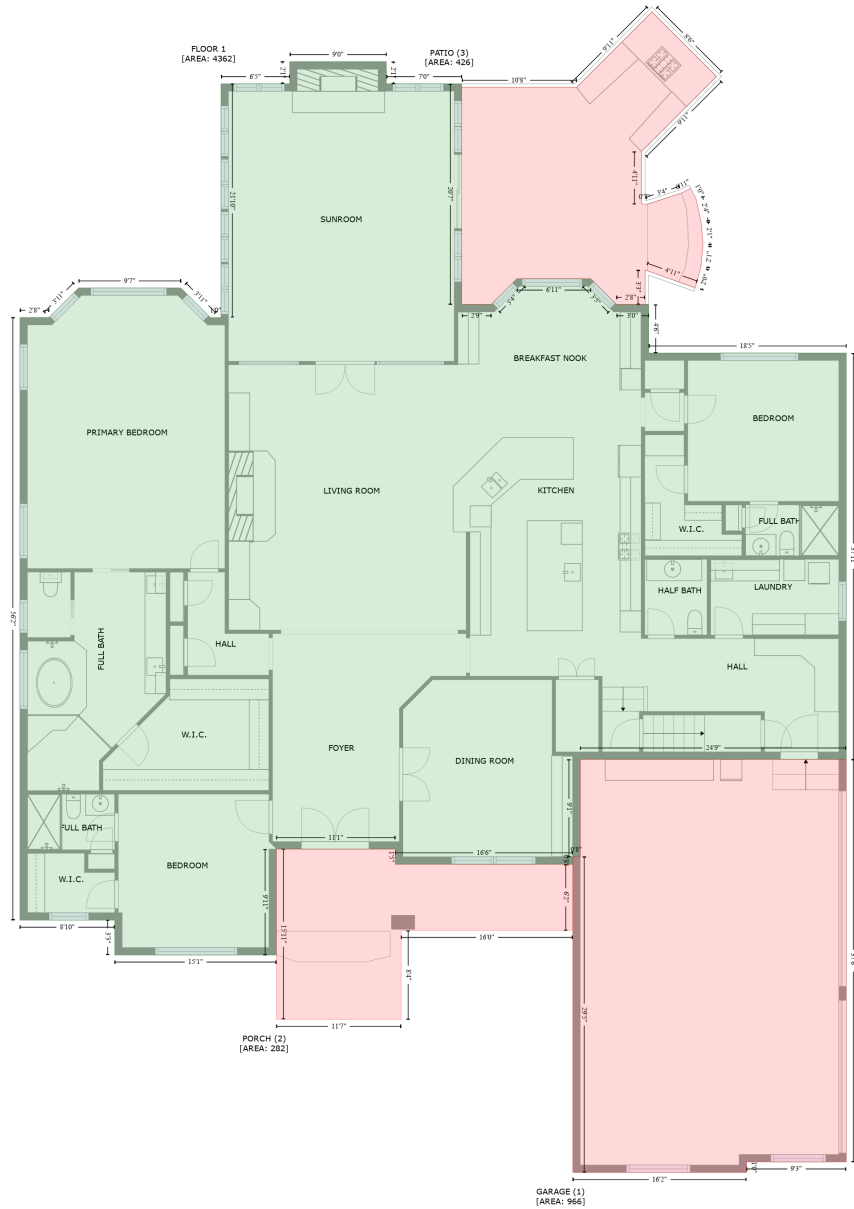


539 Medora Lane, Fort Mill, York County, South Carolina, United States, 29708

Gross Living Area: 5902 sq. ft



Space

Area (sq. ft)

Calculation Coordinate Polygon Area Algorithm using inches

FLOOR 1
(Living area)

4362

$$\begin{aligned}
 & -((517.5 + 517.5) * (101.2 - 126) + (517.5 + 601.8) * (126 - 126) + (601.8 + 601.8) * (126 - 372.9) \\
 & + (601.8 + 634.8) * (372.9 - 372.9) + (634.8 + 663.1) * (372.9 - 344.1) + (663.1 + 746.1) * (344.1 - \\
 & 344.1) + (746.1 + 774.8) * (344.1 - 372.9) + (774.8 + 810.8) * (372.9 - 372.9) + (810.8 + 810.8) * \\
 & (372.9 - 427.2) + (810.8 + 1031.7) * (427.2 - 427.2) + (1031.7 + 1031.7) * (427.2 - 881.7) + \\
 & (1031.7 + 734.4) * (881.7 - 881.7) + (734.4 + 734.4) * (881.7 - 990.7) + (734.4 + 726) * (990.7 - \\
 & 990.7) + (726 + 726) * (990.7 - 999.1) + (726 + 527.7) * (999.1 - 999.1) + (527.7 + 527.7) * \\
 & (999.1 - 982.1) + (527.7 + 394.7) * (982.1 - 982.1) + (394.7 + 394.7) * (982.1 - 1100.6) + (394.7 +
 \end{aligned}$$

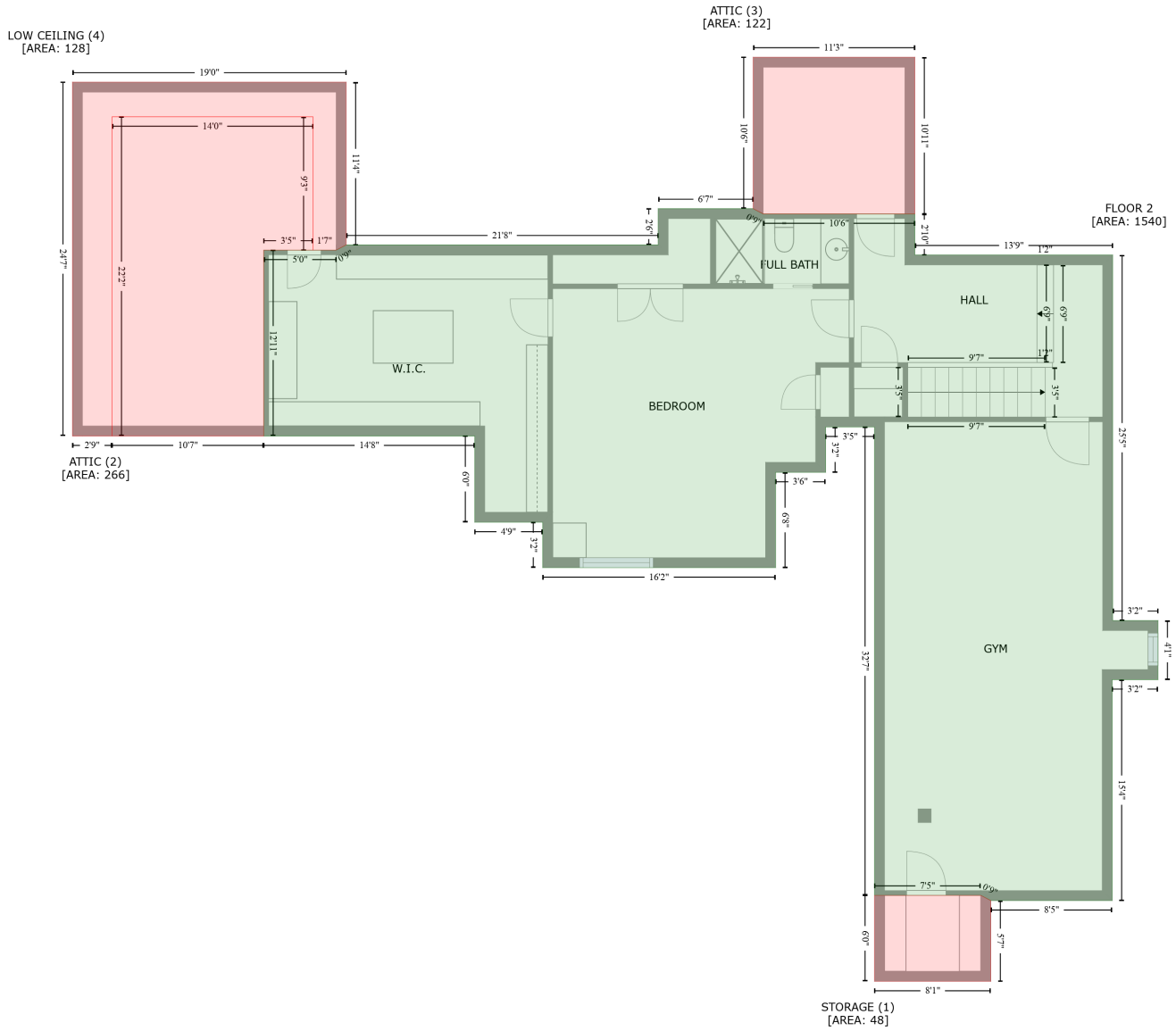
539 Medora Lane, Fort Mill, York County, South Carolina, United States, 29708

Gross Living Area: 5902 sq. ft

Space	Area (sq. ft)	Calculation <small>Coordinate Polygon Area Algorithm using inches</small>
		$213.9 * (1100.6 - 1100.6) + (213.9 + 213.9) * (1100.6 - 1061.7) + (213.9 + 107.9) * (1061.7 - 1061.7) + (107.9 + 107.9) * (1061.7 - 387.4) + (107.9 + 140.4) * (387.4 - 387.4) + (140.4 + 173.4) * (387.4 - 354.4) + (173.4 + 287.9) * (354.4 - 354.4) + (287.9 + 321) * (354.4 - 387.5) + (321 + 332.7) * (387.5 - 387.5) + (332.7 + 332.7) * (387.5 - 126) + (332.7 + 409.5) * (126 - 126) + (409.5 + 409.5) * (126 - 101.2) + (409.5 + 517.5) * (101.2 - 101.2) * 0.5 * 0.00694$
GARAGE (Non-living area)	966	$-((1031.7 + 1031.7) * (881.7 - 1332.1) + (1031.7 + 920.3) * (1332.1 - 1332.1) + (920.3 + 920.3) * (1332.1 - 1343.9) + (920.3 + 726) * (1343.9 - 1343.9) + (726 + 726) * (1343.9 - 990.7) + (726 + 734.4) * (990.7 - 990.7) + (734.4 + 734.4) * (990.7 - 881.7) + (734.4 + 1031.7) * (881.7 - 881.7)) * 0.5 * 0.00694$
PORCH (Non-living area)	282	$-((527.7 + 527.7) * (982.1 - 999.1) + (527.7 + 726) * (999.1 - 999.2) + (726 + 726) * (999.2 - 1073.1) + (726 + 534.1) * (1073.1 - 1073.1) + (534.1 + 534.1) * (1073.1 - 1172.6) + (534.1 + 394.7) * (1172.6 - 1172.6) + (394.7 + 394.7) * (1172.6 - 982.1) + (394.7 + 527.7) * (982.1 - 982.1)) * 0.5 * 0.00694$
PATIO (Non-living area)	426	$-((814.4 + 886.6) * (45.7 - 117.9) + (886.6 + 802.7) * (117.9 - 201.7) + (802.7 + 802.7) * (201.7 - 260.6) + (802.7 + 809.9) * (260.6 - 260.6) + (809.9 + 847.5) * (260.6 - 248.2) + (847.5 + 857.8) * (248.2 - 243.1) + (857.8 + 863.5) * (243.1 - 253.7) + (863.5 + 869.7) * (253.7 - 281.2) + (869.7 + 871.6) * (281.2 - 306.5) + (871.6 + 869.3) * (306.5 - 331.1) + (869.3 + 862.7) * (331.1 - 354.3) + (862.7 + 806.8) * (354.3 - 334.4) + (806.8 + 806.8) * (334.4 - 372.9) + (806.8 + 774.8) * (372.9 - 372.9) + (774.8 + 746.1) * (372.9 - 344.1) + (746.1 + 663.1) * (344.1 - 344.1) + (663.1 + 634.8) * (344.1 - 372.9) + (634.8 + 601.8) * (372.9 - 372.9) + (601.8 + 601.8) * (372.9 - 130) + (601.8 + 730.1) * (130 - 130) + (730.1 + 814.4) * (130 - 45.7)) * 0.5 * 0.00694$

539 Medora Lane, Fort Mill, York County, South Carolina, United States, 29708

Gross Living Area: 5902 sq. ft



Space	Area (sq. ft)	Calculation <small>Coordinate Polygon Area Algorithm using inches</small>
FLOOR 2 (Living area)	1540	$ \begin{aligned} & -((504.4 + 512.7) * (700.5 - 704.9) + (512.7 + 639.2) * (704.9 - 704.9) + (639.2 + 639.2) * (704.9 - 739.1) \\ & + (639.2 + 804.2) * (739.1 - 739.1) + (804.2 + 804.2) * (739.1 - 1043.9) + (804.2 + 842) * \\ & (1043.9 - 1043.9) + (842 + 842) * (1043.9 - 1093.2) + (842 + 803.8) * (1093.2 - 1093.2) + (803.8 \\ & + 803.8) * (1093.2 - 1277.5) + (803.8 + 702.6) * (1277.5 - 1277.5) + (702.6 + 694.3) * (1277.5 - \\ & 1273.1) + (694.3 + 605.6) * (1273.1 - 1273.1) + (605.6 + 605.6) * (1273.1 - 882.6) + (605.6 + \\ & 564.8) * (882.6 - 882.6) + (564.8 + 564.8) * (882.6 - 920.4) + (564.8 + 523.1) * (920.4 - 920.4) + \\ & (523.1 + 523.1) * (920.4 - 999.9) + (523.1 + 328.9) * (999.9 - 999.9) + (328.9 + 328.9) * (999.9 - \\ & 962) + (328.9 + 272.2) * (962 - 962) + (272.2 + 272.2) * (962 - 890.1) + (272.2 + 96.2) * (890.1 - \\ & 890.1) + (96.2 + 96.2) * (890.1 - 735.1) + (96.2 + 156.6) * (735.1 - 735.1) + (156.6 + 165) * (735.1 - 735.1) \end{aligned} $

539 Medora Lane, Fort Mill, York County, South Carolina, United States, 29708

Gross Living Area: 5902 sq. ft

Space	Area (sq. ft)	Calculation <small>Coordinate Polygon Area Algorithm using inches</small>
		$-730.8 + (165 + 425.2) * (730.8 - 730.8) + (425.2 + 425.2) * (730.8 - 700.5) + (425.2 + 504.4) * (700.5 - 700.5) * 0.5 * 0.00694$
STORAGE (Non-living area)	48	$-((694.3 + 702.6) * (1273.1 - 1277.5) + (702.6 + 702.6) * (1277.5 - 1344.8) + (702.6 + 605.6) * (1344.8 - 1344.8) + (605.6 + 605.6) * (1344.8 - 1273.1) + (605.6 + 694.3) * (1273.1 - 1273.1)) * 0.5 * 0.00694$
ATTIC (Non-living area)	266	$-((137.3 + 137.3) * (623.9 - 735.1) + (137.3 + 96.2) * (735.1 - 735.1) + (96.2 + 96.2) * (735.1 - 890.1) + (96.2 + -30.3) * (890.1 - 890.1) + (-30.3 + -30.3) * (890.1 - 623.9) + (-30.3 + 137.3) * (623.9 - 623.9)) * 0.5 * 0.00694$
ATTIC (Non-living area)	122	$-((639.2 + 639.2) * (574.2 - 704.9) + (639.2 + 512.7) * (704.9 - 704.9) + (512.7 + 504.4) * (704.9 - 700.5) + (504.4 + 504.4) * (700.5 - 574.2) + (504.4 + 639.2) * (574.2 - 574.2)) * 0.5 * 0.00694$
LOW CEILING (Non-living area)	128	$-((165 + 165) * (595 - 730.8) + (165 + 156.6) * (730.8 - 735.1) + (156.6 + 137.3) * (735.1 - 735.1) + (137.3 + 137.3) * (735.1 - 623.9) + (137.3 + -30.3) * (623.9 - 623.9) + (-30.3 + -30.3) * (623.9 - 890.1) + (-30.3 + -63.3) * (890.1 - 890.1) + (-63.3 + -63.3) * (890.1 - 595) + (-63.3 + 165) * (595 - 595)) * 0.5 * 0.00694$