

911 Abilene Lane, Fort Mill, York County, South Carolina, United States, 29715

Gross Living Area: 4104 sq. ft



Space	Area (sq. ft)	Calculation
FLOOR 1 (Living area)	2491	Coordinate Polygon Area Algorithm using inches $-((296.5 + 290.5) * (607.4 - 607.4) + (290.5 + 290.5) * (607.4 - 469.3) + (290.5 + 19.2) * (469.3 - 469.3) + (19.2 + 19.2) * (469.3 - 360.7) + (19.2 + -2.9) * (360.7 - 360.7) + (-2.9 + -2.9) * (360.7 - 269.6) + (-2.9 + 27.1) * (269.6 - 269.6) + (27.1 + 27.1) * (269.6 - 16.4) + (27.1 + 217.4) * (16.4 - 16.4) + (217.4 + 217.4) * (16.4 - 109) + (217.4 + 460.5) * (109 - 109) + (460.5 + 460.5) * (109 - 16.4) + (460.5 + 689.4) * (16.4 - 16.4) + (689.4 + 689.4) * (16.4 - 733.2) + (689.4 + 519.8) * (733.2 - 733.2) + (519.8 + 519.8) * (733.2 - 613.4) + (519.8 + 296.5) * (613.4 - 613.4) + (296.5 + 296.5) * (613.4 - 607.4)) * 0.5 * 0.00694$

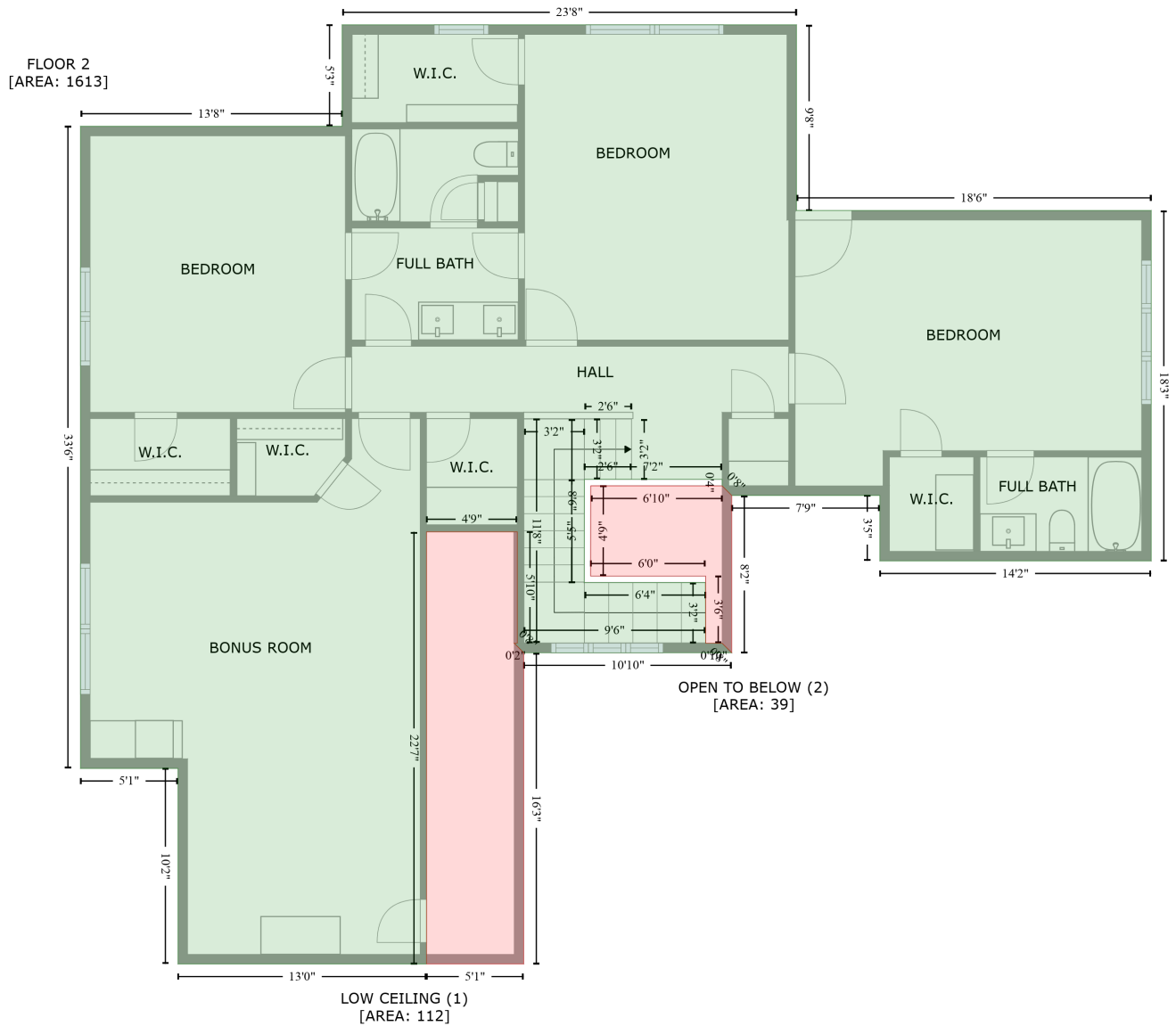
911 Abilene Lane, Fort Mill, York County, South Carolina, United States, 29715

Gross Living Area: 4104 sq. ft

Space	Area (sq. ft)	Calculation <small>Coordinate Polygon Area Algorithm using inches</small>
GARAGE (Non-living area)	825	$-((290.5 + 290.5) * (469.3 - 607.4) + (290.5 + 296.5) * (607.4 - 607.4) + (296.5 + 296.5) * (607.4 - 874.5) + (296.5 + 249.3) * (874.5 - 874.5) + (249.3 + 249.3) * (874.5 - 916.2) + (249.3 + 78.6) * (916.2 - 916.2) + (78.6 + 78.6) * (916.2 - 876.1) + (78.6 + 19.2) * (876.1 - 876.1) + (19.2 + 19.2) * (876.1 - 469.3) + (19.2 + 290.5) * (469.3 - 469.3)) * 0.5 * 0.00694$
DECK (Non-living area)	163	$-((255.9 + 255.9) * (-31 - 20.4) + (255.9 + 460.5) * (20.4 - 20.4) + (460.5 + 460.5) * (20.4 - 109) + (460.5 + 217.4) * (109 - 109) + (217.4 + 217.4) * (109 - -31) + (217.4 + 255.9) * (-31 - -31)) * 0.5 * 0.00694$

911 Abilene Lane, Fort Mill, York County, South Carolina, United States, 29715

Gross Living Area: 4104 sq. ft



Space	Area (sq. ft)	Calculation <small>Coordinate Polygon Area Algorithm using inches</small>
FLOOR 2 (Living area)	1613	$ \begin{aligned} & -((471.7 + 471.7) * (222 - 338.1) + (471.7 + 693.8) * (338.1 - 338.1) + (693.8 + 693.8) * (338.1 - 557.6) + (693.8 + 523.9) * (557.6 - 557.6) + (523.9 + 523.9) * (557.6 - 516.6) + (523.9 + 431.2) * \\ & (516.6 - 516.6) + (431.2 + 425.2) * (516.6 - 510.6) + (425.2 + 425.2) * (510.6 - 506.5) + (425.2 + 338.9) * (506.5 - 506.5) + (338.9 + 338.8) * (506.5 - 571.1) + (338.8 + 414.6) * (571.1 - 571.1) + \\ & (414.6 + 414.8) * (571.1 - 609.1) + (414.8 + 425.2) * (609.1 - 609.1) + (425.2 + 431.2) * (609.1 - 615.1) + (431.2 + 301) * (615.1 - 615.1) + (301 + 295) * (615.1 - 609.1) + (295 + 297) * (609.1 - 609.1) + (297 + 297) * (609.1 - 539.4) + (297 + 240.2) * (539.4 - 539.4) + (240.2 + 240.2) * \\ & (539.4 - 809.9) + (240.2 + 84.6) * (809.9 - 809.9) + (84.6 + 84.6) * (809.9 - 687.5) + (84.6 + 23.5) * (687.5 - 687.5) + (23.5 + 23.5) * (687.5 - 285.4) + (23.5 + 187.3) * (285.4 - 285.4) + (187.3 + \end{aligned} $

911 Abilene Lane, Fort Mill, York County, South Carolina, United States, 29715

Gross Living Area: 4104 sq. ft

Space	Area (sq. ft)	Calculation <small>Coordinate Polygon Area Algorithm using inches</small>
LOW CEILING (Non-living area)	112	$187.3 * (285.4 - 222) + (187.3 + 471.7) * (222 - 222) * 0.5 * 0.00694$ $-((297 + 297) * (539.4 - 609.1) + (297 + 295) * (609.1 - 609.1) + (295 + 301) * (609.1 - 615.1) +$ $(301 + 301) * (615.1 - 809.9) + (301 + 240.2) * (809.9 - 809.9) + (240.2 + 240.2) * (809.9 - 539.4)$ $+ (240.2 + 297) * (539.4 - 539.4)) * 0.5 * 0.00694$
OPEN TO BELOW (Non-living area)	39	$-(342.9 + 425.2) * (510.6 - 510.6) + (425.2 + 431.2) * (510.6 - 516.6) + (431.2 + 431.2) * (516.6 -$ $615.1) + (431.2 + 425.2) * (615.1 - 609.1) + (425.2 + 414.9) * (609.1 - 609.1) + (414.9 + 414.9) *$ $(609.1 - 567.1) + (414.9 + 342.9) * (567.1 - 567.1) + (342.9 + 342.9) * (567.1 - 510.6) * 0.5 *$ 0.00694