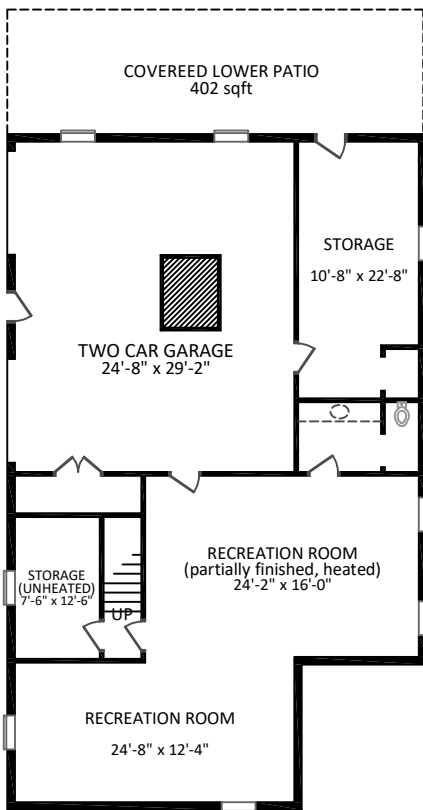
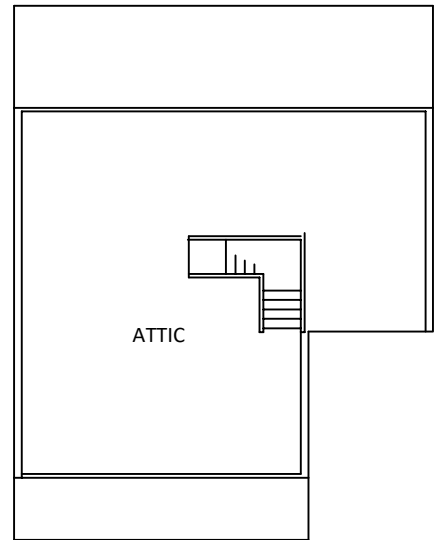


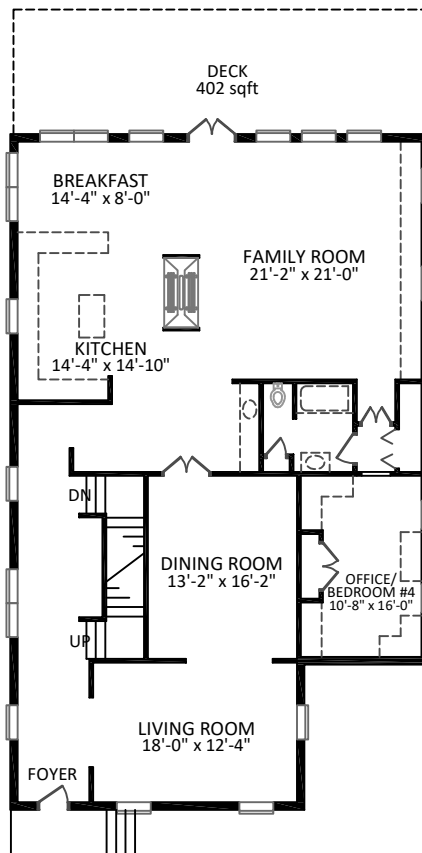
HEATED LIVING SPACE  
 1st FLOOR - 2067  
 2nd FLOOR - 1536  
 TOTAL HEATED - 3603  
 basement - 995 partially finished  
 garage - 807 unheated  
 storage - 264 unheated  
 attic - 1064 sqft

All measurements are rounded to nearest inch. This floorplan is intended for marketing brochures so window/door placements, and room dimensions are for representation only.

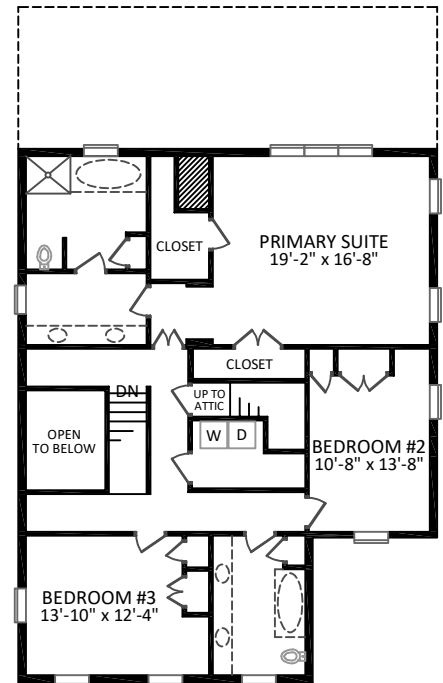
Steel Type Insuring



BASEMENT



1ST FLOOR



2ND FLOOR

1415 MYERS PARK DRIVE