

4505 Plicata Drive, Fort Mill, Lancaster County, South Carolina, United States, 29707

Gross Living Area: 3233 sq. ft



Space	Area (sq. ft)	Calculation
FLOOR 1 (Living area)	1467	Coordinate Polygon Area Algorithm using inches $-((310.2 + 304.2) * (570.5 - 570.5) + (304.2 + 304.2) * (570.5 - 576.5) + (304.2 + 73.5) * (576.5 - 576.5) + (73.5 + 73.5) * (576.5 - 25.9) + (73.5 + 546.2) * (25.9 - 25.9) + (546.2 + 546.2) * (25.9 - 384.3) + (546.2 + 468.1) * (384.3 - 384.3) + (468.1 + 468.1) * (384.3 - 361.4) + (468.1 + 310.2) * (361.4 - 361.4) + (310.2 + 310.2) * (361.4 - 570.5)) * 0.5 * 0.00694$
GARAGE (Non-living area)	450	$-((468.1 + 468.1) * (361.4 - 384.3) + (468.1 + 546.2) * (384.3 - 384.3) + (546.2 + 546.2) * (384.3 - 641.8) + (546.2 + 304.2) * (641.8 - 641.8) + (304.2 + 304.2) * (641.8 - 570.5) + (304.2 + 310.2) * (570.5 - 570.5)) * 0.5 * 0.00694$

4505 Plicata Drive, Fort Mill, Lancaster County, South Carolina, United States, 29707

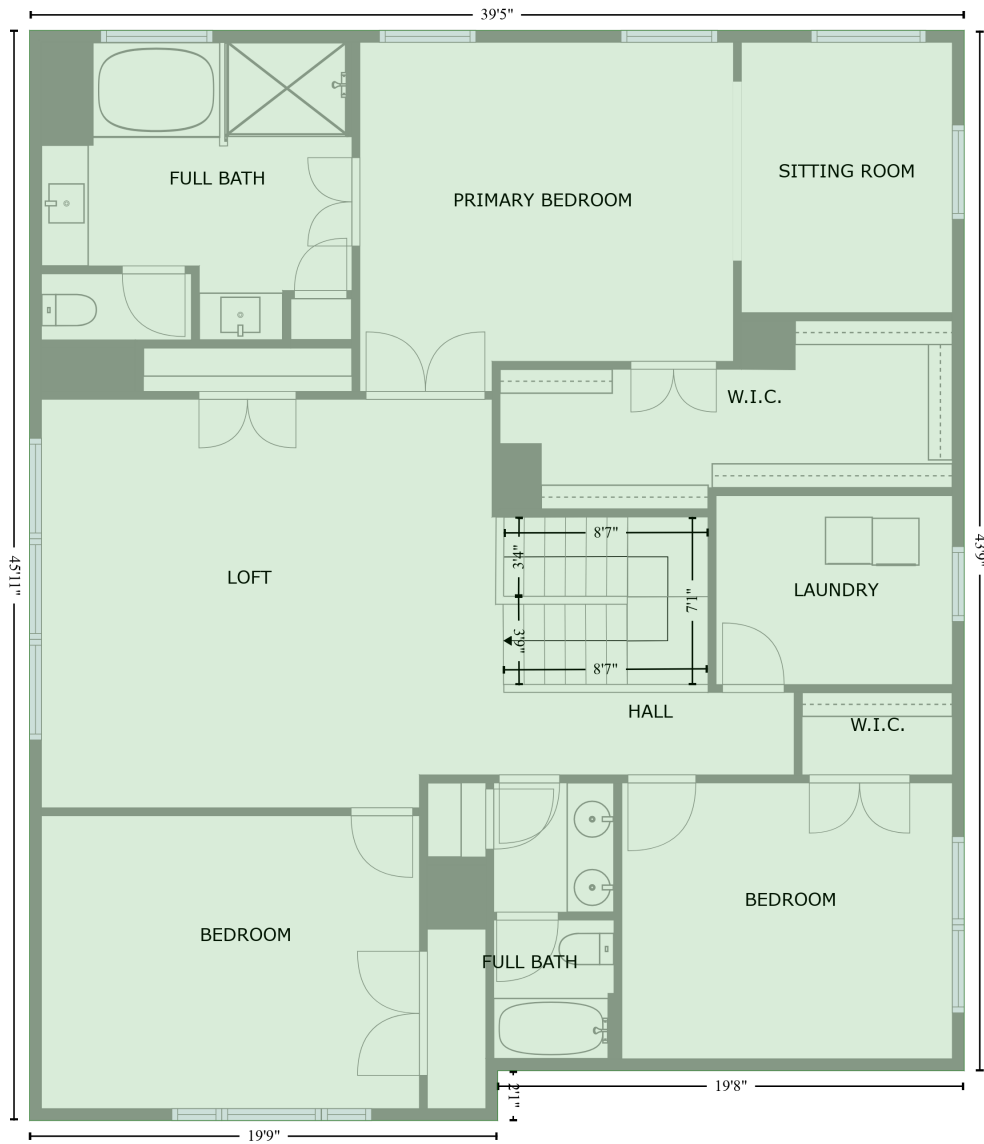
Gross Living Area: 3233 sq. ft

Space	Area (sq. ft)	Calculation <small>Coordinate Polygon Area Algorithm using inches</small>
		$(570.5 - 570.5) + (310.2 + 310.2) * (570.5 - 361.4) + (310.2 + 468.1) * (361.4 - 361.4) * 0.5 * 0.00694$
FIREPLACE (Non-living area)	7	$-((336.7 + 336.7) * (11.2 - 25.9) + (336.7 + 264) * (25.9 - 25.9) + (264 + 264) * (25.9 - 11.2) + (264 + 336.7) * (11.2 - 11.2)) * 0.5 * 0.00694$

4505 Plicata Drive, Fort Mill, Lancaster County, South Carolina, United States, 29707

Gross Living Area: 3233 sq. ft

FLOOR 2
[AREA: 1766]



Space	Area (sq. ft)	Calculation <small>Coordinate Polygon Area Algorithm using inches</small>
FLOOR 2 (Living area)	1766	$-((546.2 + 546.2) * (25.9 - 551.3) + (546.2 + 310.2) * (551.3 - 551.3) + (310.2 + 310.2) * (551.3 - 576.5) + (310.2 + 73.5) * (576.5 - 576.5) + (73.5 + 73.5) * (576.5 - 25.9) + (73.5 + 546.2) * (25.9 - 25.9)) * 0.5 * 0.00694$