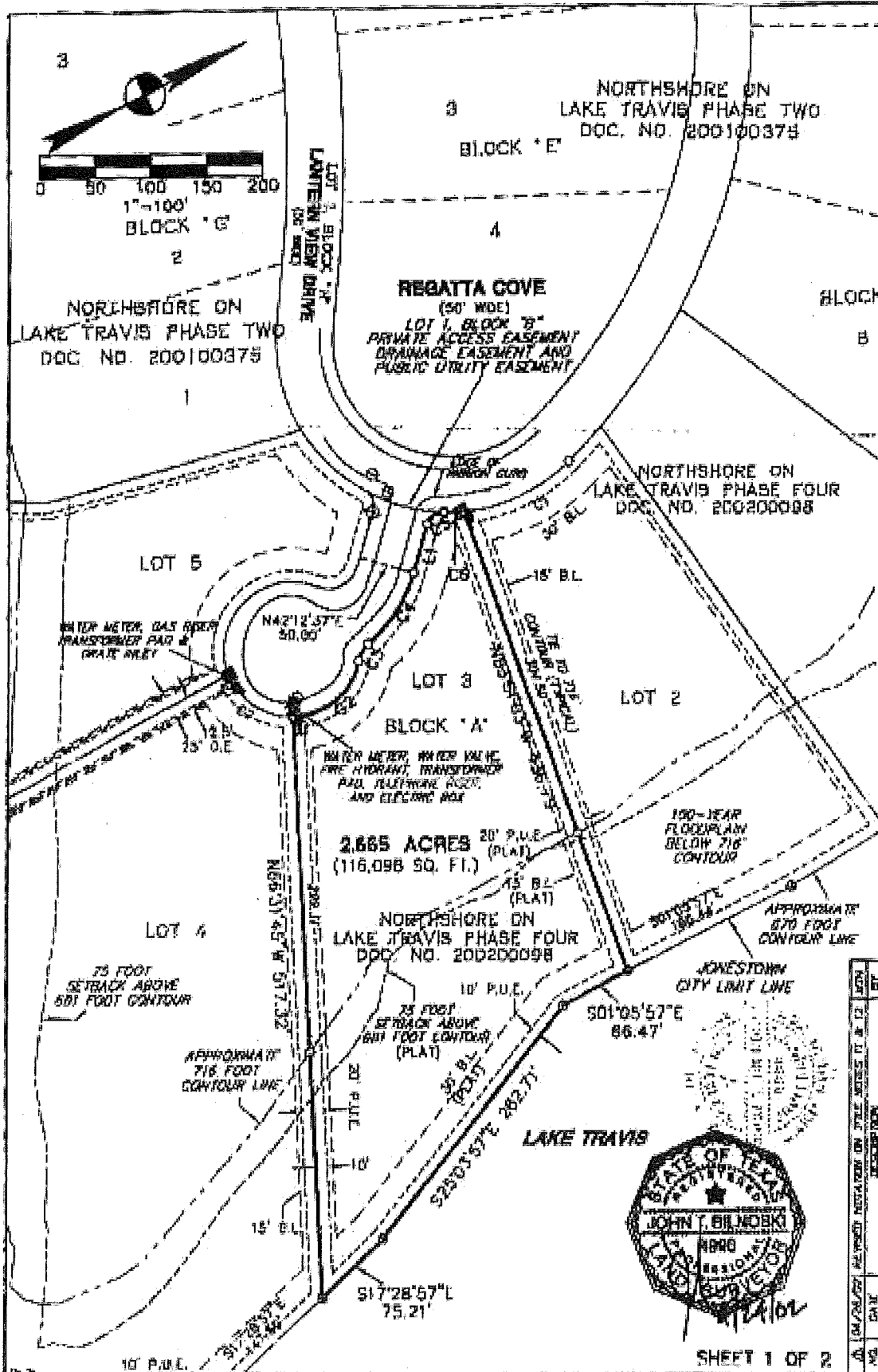


19036



NO.	DATE	BY

Bury+Partners
 Consulting Engineers and Surveyors
 11020 N. Loop West, Suite 1000, Dallas, TX 75243
 Telephone: (214) 343-1100
 Fax: (214) 343-1101
 www.bury.com

LAND TITLE SURVEY
 OF LOT 3, BLOCK "A" NORTHSHORE ON LAKE TRAVIS
 PHASE FOUR, A SUBDIVISION IN TRAVIS COUNTY,
 TEXAS, ACCORDING TO THE MAP OR PLAT THEREOF
 RECORDED IN DOCUMENT NO. 200200098, OFFICIAL
 PUBLIC RECORDS, TRAVIS COUNTY, TEXAS

SILVER CREEK PARTNERS I, LTD.
NORTHSHORE PHASE FOUR

