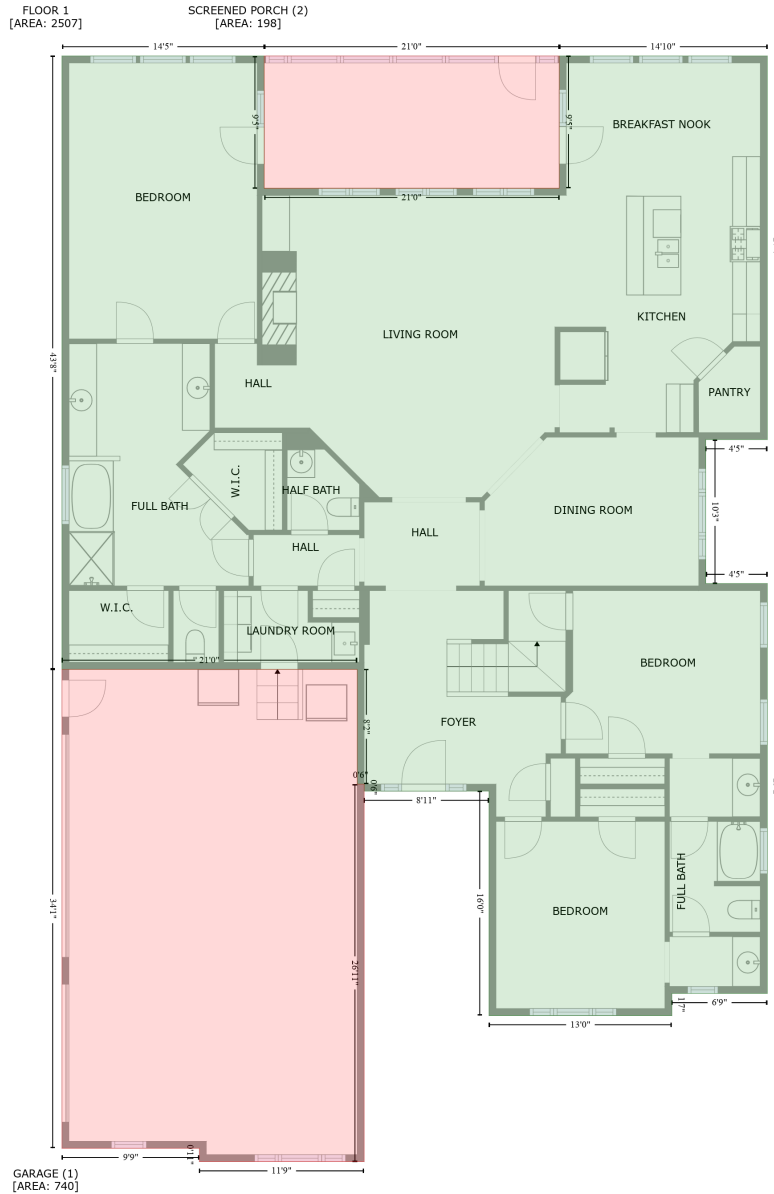


# 8055 Torquay Drive, Harrisburg, Cabarrus County, North Carolina, United States, 28075

Gross Living Area: 3095 sq. ft



Space	Area (sq. ft)	Calculation <small>Coordinate Polygon Area Algorithm using inches</small>
FLOOR 1 (Living area)	2507	$  \begin{aligned}  & -((278.8 + 278.8) * (49.1 - 162.2) + (278.8 + 530.7) * (162.2 - 162.2) + (530.7 + 530.7) * (162.2 - 49.1) \\  & + (530.7 + 708.4) * (49.1 - 49.1) + (708.4 + 708.4) * (49.1 - 376.9) + (708.4 + 655.8) * (376.9 - 376.9) \\  & + (655.8 + 655.8) * (376.9 - 499.9) + (655.8 + 708.4) * (499.9 - 499.9) + (708.4 + 708.4) * (499.9 - 850.1) \\  & + (708.4 + 626.9) * (850.1 - 850.1) + (626.9 + 626.9) * (850.1 - 869) + (626.9 + 470.8) * (869 - 869) \\  & + (470.8 + 470.8) * (869 - 677.3) + (470.8 + 364.2) * (677.3 - 677.3) + (364.2 + 364.2) * (677.3 - 671.3) \\  & + (364.2 + 358.2) * (671.3 - 671.3) + (358.2 + 358.2) * (671.3 - 573.2) + (358.2 + 106.2) * (573.2 - 573.2) \\  & + (106.2 + 106.2) * (573.2 - 49.1) + (106.2 + 278.8) *  \end{aligned}  $

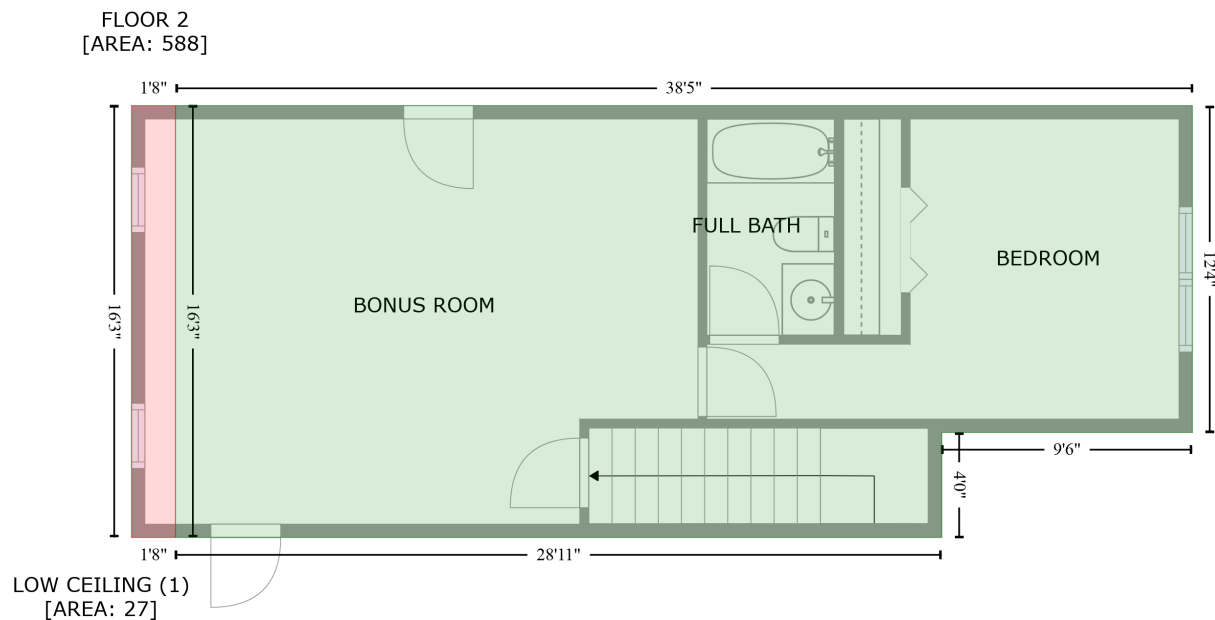
# 8055 Torquay Drive, Harrisburg, Cabarrus County, North Carolina, United States, 28075

Gross Living Area: 3095 sq. ft

Space	Area (sq. ft)	Calculation <small>Coordinate Polygon Area Algorithm using inches</small>
GARAGE (Non-living area)	740	$(49.1 - 49.1) * 0.5 * 0.00694$ $-((358.2 + 358.2) * (573.2 - 671.3) + (358.2 + 364.2) * (671.3 - 671.3) + (364.2 + 364.2) * (671.3 - 993.8) + (364.2 + 223.5) * (993.8 - 993.8) + (223.5 + 223.5) * (993.8 - 982.4) + (223.5 + 106.2) * (982.4 - 982.4) + (106.2 + 106.2) * (982.4 - 573.2) + (106.2 + 358.2) * (573.2 - 573.2)) * 0.5 * 0.00694$
SCREENED PORCH (Non-living area)	198	$-((530.7 + 530.7) * (49.1 - 162.2) + (530.7 + 278.8) * (162.2 - 162.2) + (278.8 + 278.8) * (162.2 - 49.1) + (278.8 + 530.7) * (49.1 - 49.1)) * 0.5 * 0.00694$

# 8055 Torquay Drive, Harrisburg, Cabarrus County, North Carolina, United States, 28075

Gross Living Area: 3095 sq. ft



Space	Area (sq. ft)	Calculation <small>Coordinate Polygon Area Algorithm using inches</small>
FLOOR 2 (Living area)	588	$-((666.5 + 666.5) * (360.9 - 508.8) + (666.5 + 552.9) * (508.8 - 508.8) + (552.9 + 552.9) * (508.8 - 556.4) + (552.9 + 205.6) * (556.4 - 556.4) + (205.6 + 205.6) * (556.4 - 360.9) + (205.6 + 666.5) * (360.9 - 360.9)) * 0.5 * 0.00694$
LOW CEILING (Non-living area)	27	$-((205.6 + 205.6) * (360.9 - 556.4) + (205.6 + 185.7) * (556.4 - 556.4) + (185.7 + 185.7) * (556.4 - 360.9) + (185.7 + 205.6) * (360.9 - 360.9)) * 0.5 * 0.00694$