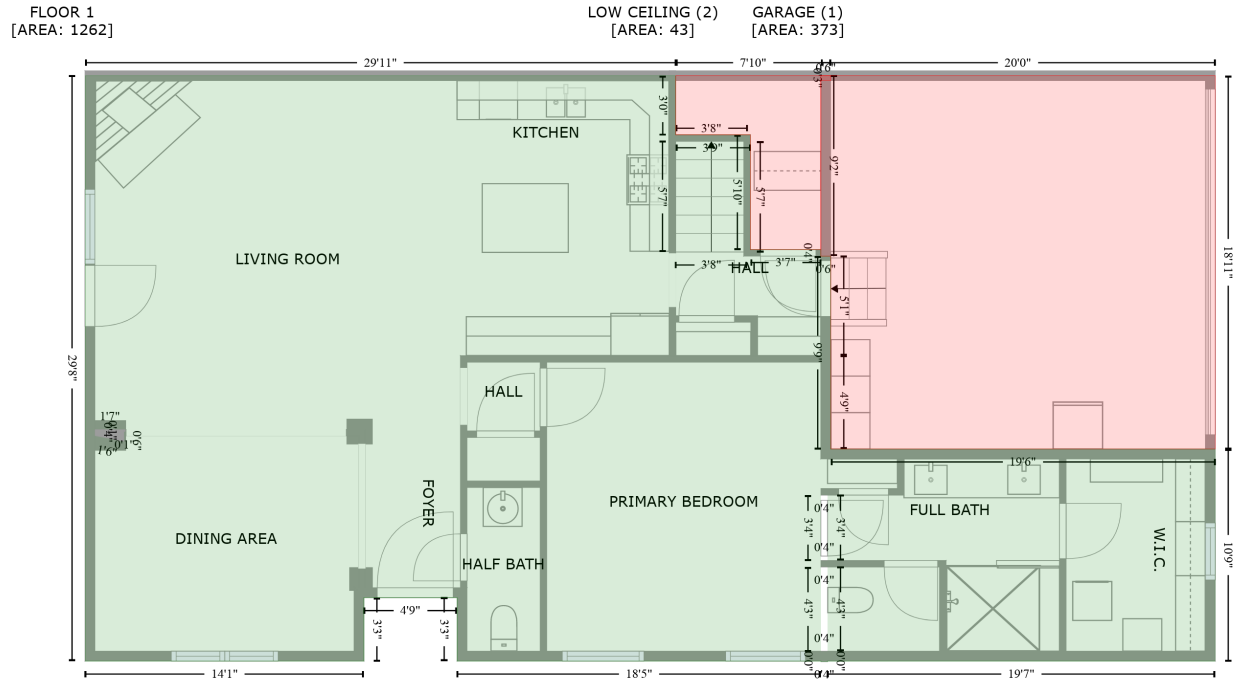


203 Pine Needles Lane, Fort Mill, York County, South Carolina, United States, 29708

Gross Living Area: 2527 sq. ft



Space	Area (sq. ft)	Calculation
FLOOR 1 (Living area)	1262	Coordinate Polygon Area Algorithm using inches $-((355.9 + 355.9) * (17.1 - 53) + (355.9 + 401.2) * (53 - 53) + (401.2 + 401.2) * (53 - 122.8) + (401.2 + 444) * (122.8 - 122.8) + (444 + 444) * (122.8 - 126.8) + (444 + 450) * (126.8 - 126.8) + (450 + 450) * (126.8 - 244) + (450 + 683.6) * (244 - 244) + (683.6 + 683.6) * (244 - 372.9) + (683.6 + 448.1) * (372.9 - 372.9) + (448.1 + 448.1) * (372.9 - 373.3) + (448.1 + 444.1) * (373.3 - 373.3) + (444.1 + 444.1) * (373.3 - 372.9) + (444.1 + 223.1) * (372.9 - 372.9) + (223.1 + 223.1) * (372.9 - 334.3) + (223.1 + 166.5) * (334.3 - 334.3) + (166.5 + 166.5) * (334.3 - 372.9) + (166.5 + -2.9) * (372.9 - 372.9) + (-2.9 + -2.9) * (372.9 - 17.1) + (-2.9 + 355.9) * (17.1 - 17.1)) * 0.5 * 0.00694 + -((444.1 + 448.1) * (366.9 - 366.9) + (448.1 + 448.1) * (366.9 - 315.7) + (448.1 + 444.1) * (315.7 - 315.7) + (444.1 + 444.1) * (315.7 - 366.9)) * 0.5 * 0.00694 + -((444.1 + 448.1) * (311.7 - 311.7) + (448.1 + 448.1) * (311.7 - 272) + (448.1 + 444.1) * (272 - 272) + (444.1 + 444.1) * (272 - 311.7)) * 0.5 * 0.00694 + -((21.7 + 3.1) * (232 - 232) + (3.1 + 3.1) * (232 - 236) + (3.1 + 20.9) * (236 - 239.5) + (20.9 + 20.9) * (239.5 - 233.5) + (20.9 + 21.7) * (233.5 - 233.5) + (21.7 + 21.7) * (233.5 - 232)) * 0.5 * 0.00694$
GARAGE (Non-living area)	373	$-((683.6 + 683.6) * (17.1 - 244) + (683.6 + 450.1) * (244 - 244) + (450.1 + 450.1) * (244 - 187.3) + (450.1 + 450.1) * (187.3 - 126.8) + (450.1 + 444) * (126.8 - 126.8) + (444 + 444) * (126.8 - 17.1) + (444 + 683.6) * (17.1 - 17.1)) * 0.5 * 0.00694$
LOW CEILING (Non-living area)	43	$-((450 + 450) * (17.1 - 20.1) + (450 + 444) * (20.1 - 20.1) + (444 + 444) * (20.1 - 122.8) + (444 + 401.2) * (122.8 - 122.8) + (401.2 + 401.2) * (122.8 - 53) + (401.2 + 355.9) * (53 - 53) + (355.9 + 355.9) * (53 - 17.1) + (355.9 + 450) * (17.1 - 17.1)) * 0.5 * 0.00694$

203 Pine Needles Lane, Fort Mill, York County, South Carolina, United States, 29708

Gross Living Area: 2527 sq. ft

FLOOR 2
[AREA: 1265]



Space	Area (sq. ft)	Calculation <small>Coordinate Polygon Area Algorithm using inches</small>
FLOOR 2 (Living area)	1265	$ \begin{aligned} & -((450.1 + 450.1) * (17.1 - 48.7) + (450.1 + 641.4) * (48.7 - 48.7) + (641.4 + 641.4) * (48.7 - \\ & 213.5) + (641.4 + 591.4) * (213.5 - 213.5) + (591.4 + 591.4) * (213.5 - 334.3) + (591.4 + 450.1) * \\ & (334.3 - 334.3) + (450.1 + 450.1) * (334.3 - 372.9) + (450.1 + 270.4) * (372.9 - 372.9) + (270.4 + \\ & 270.4) * (372.9 - 334.3) + (270.4 + 160.5) * (334.3 - 334.3) + (160.5 + 160.5) * (334.3 - 239.5) + \\ & (160.5 + 14.9) * (239.5 - 239.5) + (14.9 + 14.9) * (239.5 - 196.9) + (14.9 + -2.9) * (196.9 - 196.9) + \\ & (-2.9 + -2.9) * (196.9 - 65.7) + (-2.9 + 14.9) * (65.7 - 65.7) + (14.9 + 14.9) * (65.7 - 17.1) + (14.9 + \\ & 450.1) * (17.1 - 17.1)) * 0.5 * 0.00694 \end{aligned} $