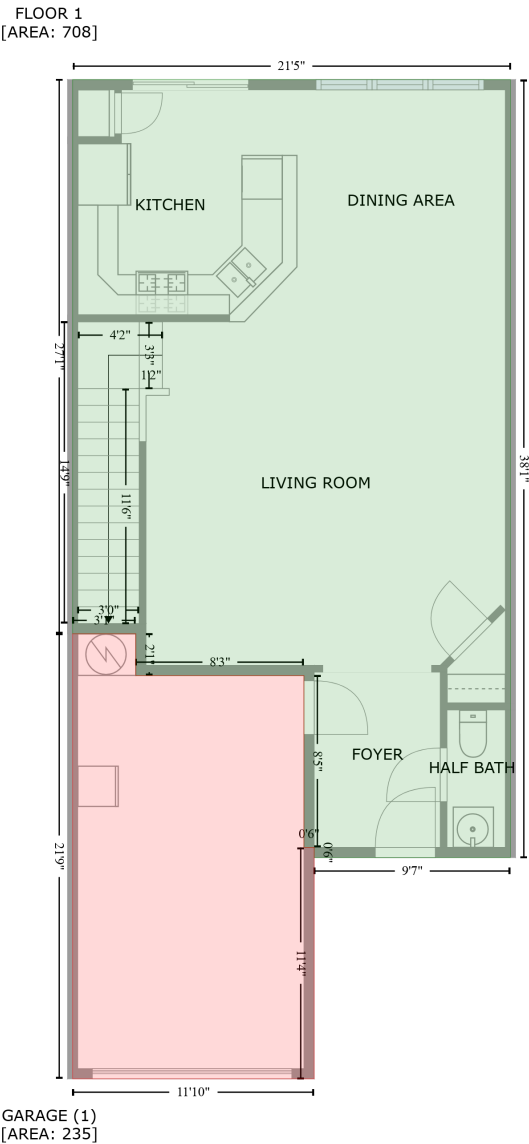


2240 Kensington Station Parkway, Starmount, Charlotte, Mecklenburg County, North Carolina, United States, 28210

Gross Living Area: 1598 sq. ft



Space	Area (sq. ft)	Calculation
FLOOR 1 (Living area)	708	Coordinate Polygon Area Algorithm using inches $-((323.3 + 323.3) * (16 - 472.9) + (323.3 + 208.1) * (472.9 - 472.9) + (208.1 + 208.1) * (472.9 - 466.9) + (208.1 + 202.1) * (466.9 - 466.9) + (202.1 + 202.1) * (466.9 - 366) + (202.1 + 103.5) * (366 - 366) + (103.5 + 103.5) * (366 - 341.5) + (103.5 + 66.4) * (341.5 - 341.5) + (66.4 + 66.4) * (341.5 - 16) + (66.4 + 323.3) * (16 - 16)) * 0.5 * 0.00694$
GARAGE (Non-living area)	235	$-((103.5 + 103.5) * (341.5 - 366) + (103.5 + 202.1) * (366 - 366) + (202.1 + 202.1) * (366 - 466.9) + (202.1 + 208.1) * (466.9 - 466.9) + (208.1 + 208.1) * (466.9 - 602.9) + (208.1 + 66.4) * (602.9 -$

2240 Kensington Station Parkway, Starmount, Charlotte, Mecklenburg County, North Carolina, United States, 28210

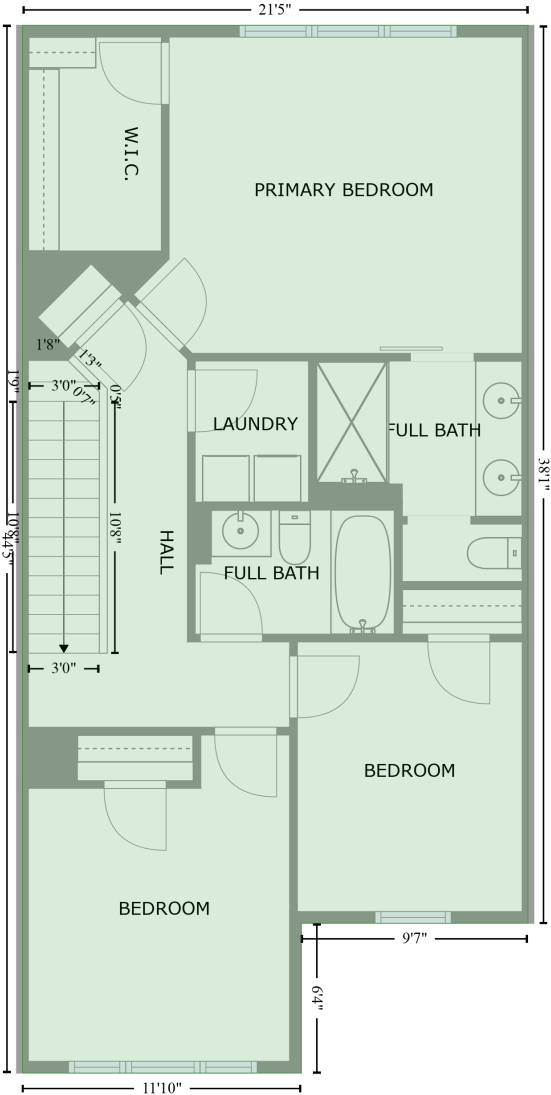
Gross Living Area: 1598 sq. ft

Space	Area (sq. ft)	Calculation
		<small>Coordinate Polygon Area Algorithm using inches</small>
		$602.9 + (66.4 + 66.4) * (602.9 - 341.5) + (66.4 + 103.5) * (341.5 - 341.5)) * 0.5 * 0.00694$

2240 Kensington Station Parkway, Starmount, Charlotte, Mecklenburg County, North Carolina, United States, 28210

Gross Living Area: 1598 sq. ft

FLOOR 2
[AREA: 890]



Space	Area (sq. ft)	Calculation
FLOOR 2 (Living area)	890	Coordinate Polygon Area Algorithm using inches $-((323.3 + 323.3) * (16 - 472.9) + (323.3 + 208.1) * (472.9 - 472.9) + (208.1 + 208.1) * (472.9 - 549.1) + (208.1 + 66.4) * (549.1 - 549.1) + (66.4 + 66.4) * (549.1 - 16) + (66.4 + 323.3) * (16 - 16)) * 0.5 * 0.00694$