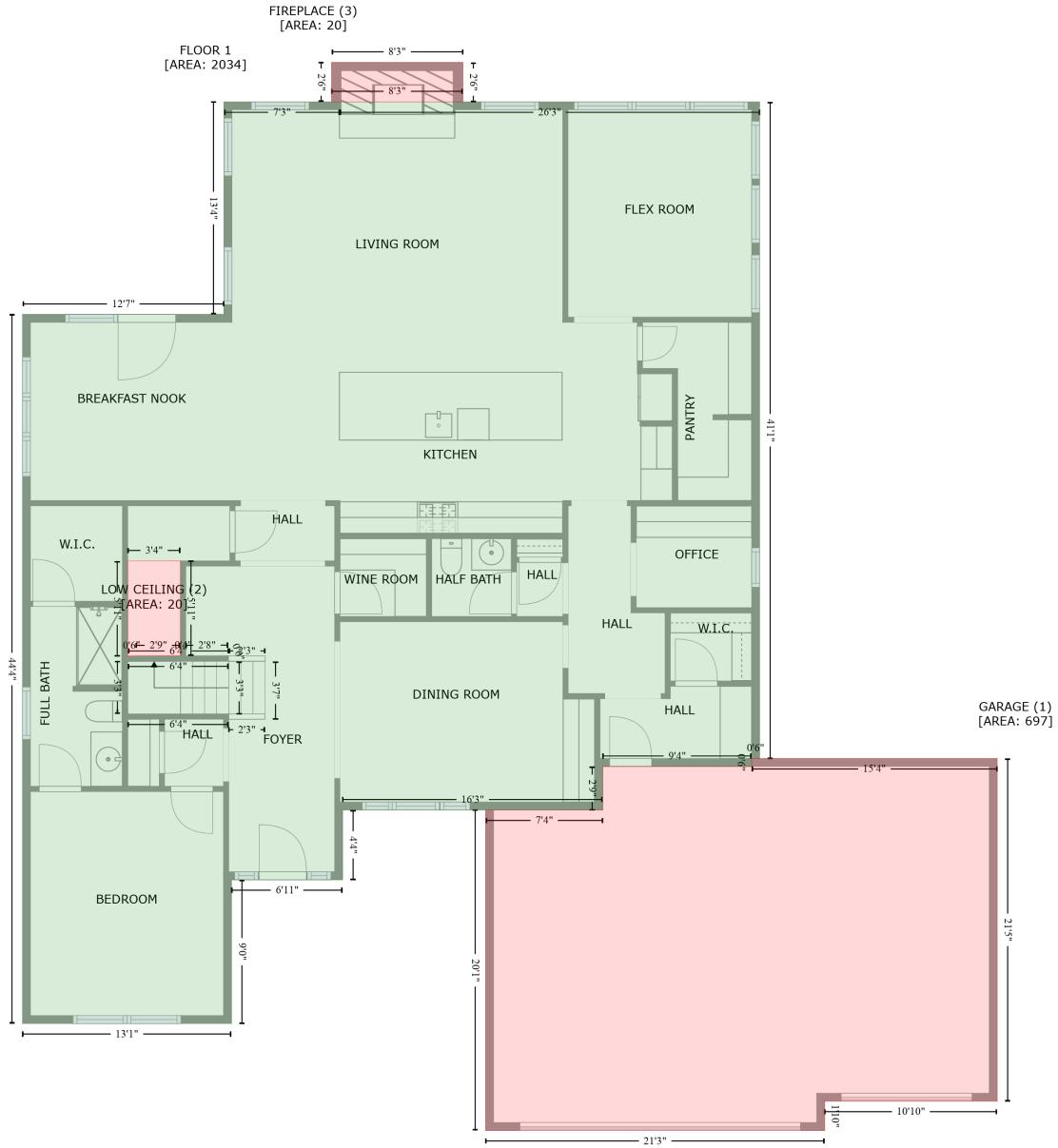


# 936 Gabriel Jon Place, Indian Land, Lancaster County, South Carolina, United States, 29707

Gross Living Area: 4452 sq. ft



Space	Area (sq. ft)	Calculation
FLOOR 1 (Living area)	2034	Coordinate Polygon Area Algorithm using inches $-((556.4 + 556.4) * (-1.3 - 491.6) + (556.4 + 550.4) * (491.6 - 491.6) + (550.4 + 550.4) * (491.6 - 497.6) + (550.4 + 438.6) * (497.6 - 497.6) + (438.6 + 438.6) * (497.6 - 530.3) + (438.6 + 243.3) * (530.3 - 530.3) + (243.3 + 243.3) * (530.3 - 582.7) + (243.3 + 159.8) * (582.7 - 582.7) + (159.8 + 159.8) * (582.7 - 690.6) + (159.8 + 3) * (690.6 - 690.6) + (3 + 3) * (690.6 - 158.2) + (3 + 154.2) * (158.2 - 158.2) + (154.2 + 154.2) * (158.2 - -1.3) + (154.2 + 241) * (-1.3 - -1.3) + (241 + 556.4) * (-1.3 - -1.3) * 0.5 * 0.00694 + -((121.6 + 82) * (343.3 - 343.3) + (82 + 82) * (343.3 - 414.8) + (82 + 157.5) * (414.8 - 414.6) + (157.5 + 157.4) * (414.6 - 414.4) + (157.4 + 125.6) * (414.4 - 414.6) +$

# 936 Gabriel Jon Place, Indian Land, Lancaster County, South Carolina, United States, 29707

Gross Living Area: 4452 sq. ft

Space	Area (sq. ft)	Calculation <small>Coordinate Polygon Area Algorithm using inches</small>
GARAGE (Non-living area)	697	$(125.6 + 121.6) * (414.6 - 414.6) + (121.6 + 121.6) * (414.6 - 343.3) * 0.5 * 0.00694$ $-((734.7 + 734.7) * (491.6 - 748.9) + (734.7 + 605.2) * (748.9 - 748.9) + (605.2 + 605.2) * (748.9 - 771) + (605.2 + 350.7) * (771 - 771) + (350.7 + 350.7) * (771 - 530.3) + (350.7 + 438.6) * (530.3 - 530.3) + (438.6 + 438.6) * (530.3 - 497.6) + (438.6 + 550.4) * (497.6 - 497.6) + (550.4 + 550.4) * (497.6 - 491.6) + (550.4 + 734.7) * (491.6 - 491.6)) * 0.5 * 0.00694$
LOW CEILING (Non-living area)	20	$-((121.6 + 121.6) * (343.3 - 414.6) + (121.6 + 88.2) * (414.6 - 414.6) + (88.2 + 82) * (414.6 - 414.8) + (82 + 82) * (414.8 - 343.3) + (82 + 121.6) * (343.3 - 343.3)) * 0.5 * 0.00694$
FIREPLACE (Non-living area)	20	$-((333.6 + 333.6) * (-31 - -1.3) + (333.6 + 235) * (-1.3 - -1.3) + (235 + 235) * (-1.3 - -31) + (235 + 333.6) * (-31 - -31)) * 0.5 * 0.00694$



# 936 Gabriel Jon Place, Indian Land, Lancaster County, South Carolina, United States, 29707

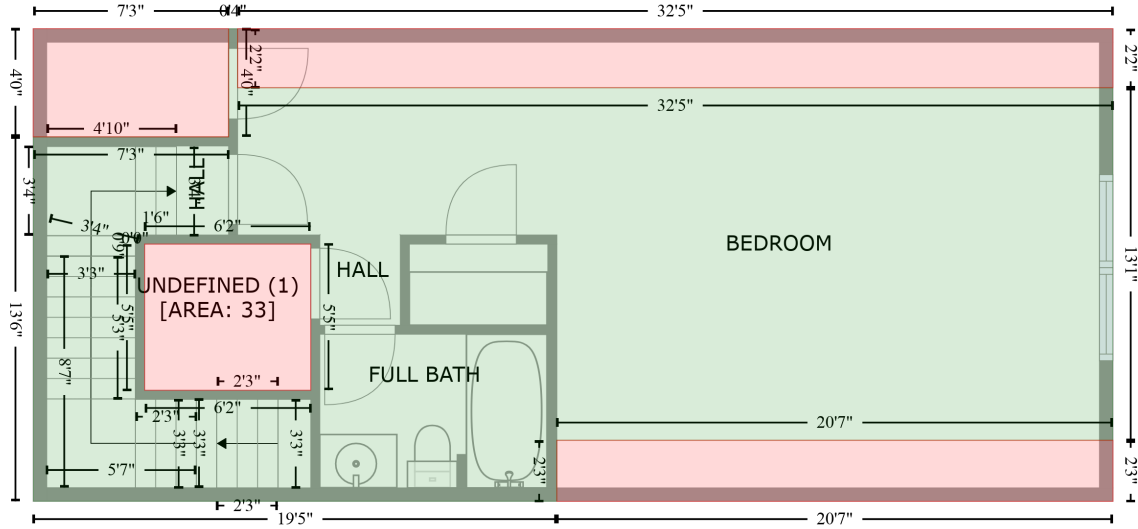
Gross Living Area: 4452 sq. ft

Space	Area (sq. ft)	Calculation <small>Coordinate Polygon Area Algorithm using inches</small>
OPEN TO BELOW (Non-living area)	25	$-1.3) * 0.5 * 0.00694 + -((181 + 125.8) * (350.2 - 350.2) + (125.8 + 125.8) * (350.2 - 414.9) + (125.8 + 180.9) * (414.9 - 414.9) + (180.9 + 181) * (414.9 - 350.2)) * 0.5 * 0.00694$
STORAGE (Non-living area)	86	$-((181 + 180.9) * (350.2 - 414.9) + (180.9 + 125.8) * (414.9 - 414.9) + (125.8 + 125.8) * (414.9 - 350.2) + (125.8 + 181) * (350.2 - 350.2)) * 0.5 * 0.00694$
		$-((556.4 + 556.4) * (333.6 - 410.5) + (556.4 + 394.8) * (410.5 - 410.5) + (394.8 + 394.8) * (410.5 - 350.2) + (394.8 + 394.8) * (350.2 - 333.6) + (394.8 + 556.4) * (333.6 - 333.6)) * 0.5 * 0.00694$

# 936 Gabriel Jon Place, Indian Land, Lancaster County, South Carolina, United States, 29707

Gross Living Area: 4452 sq. ft

UNDEFINED (2) [AREA: 29]      LOW CEILING (4) [AREA: 71]



FLOOR 3 [AREA: 520]

LOW CEILING (3) [AREA: 47]

Space	Area (sq. ft)	Calculation <small>Coordinate Polygon Area Algorithm using inches</small>
FLOOR 3 (Living area)	520	$-((167.1 + 167.1) * (254.2 - 280.5) + (167.1 + 556.4) * (280.5 - 280.5) + (556.4 + 556.4) * (280.5 - 437.1) + (556.4 + 309.1) * (437.1 - 437.1) + (309.1 + 309.1) * (437.1 - 464.3) + (309.1 + 76.1) * (464.3 - 464.3) + (76.1 + 76.1) * (464.3 - 302.3) + (76.1 + 163.1) * (302.3 - 302.3) + (163.1 + 163.1) * (302.3 - 254.2) + (163.1 + 167.1) * (254.2 - 254.2)) * 0.5 * 0.00694 + -((199.6 + 125.7) * (349.9 - 349.9) + (125.7 + 125.7) * (349.9 - 414.9) + (125.7 + 199.6) * (414.9 - 414.9) + (199.6 + 199.6) * (414.9 - 349.9)) * 0.5 * 0.00694$
UNDEFINED (Non-living area)	33	$-((199.6 + 199.6) * (349.9 - 414.9) + (199.6 + 125.7) * (414.9 - 414.9) + (125.7 + 125.7) * (414.9 - 349.9) + (125.7 + 199.6) * (349.9 - 349.9)) * 0.5 * 0.00694$
UNDEFINED (Non-living area)	29	$-((163.1 + 163.1) * (254.2 - 302.3) + (163.1 + 76.1) * (302.3 - 302.3) + (76.1 + 76.1) * (302.3 - 254.2) + (76.1 + 163.1) * (254.2 - 254.2)) * 0.5 * 0.00694$
LOW CEILING (Non-living area)	47	$-((556.4 + 556.4) * (437.1 - 464.3) + (556.4 + 309.1) * (464.3 - 464.3) + (309.1 + 309.1) * (464.3 - 437.1) + (309.1 + 556.4) * (437.1 - 437.1)) * 0.5 * 0.00694$
LOW CEILING (Non-living area)	71	$-((556.4 + 556.4) * (254.2 - 280.5) + (556.4 + 167.1) * (280.5 - 280.5) + (167.1 + 167.1) * (280.5 - 254.2) + (167.1 + 556.4) * (254.2 - 254.2)) * 0.5 * 0.00694$