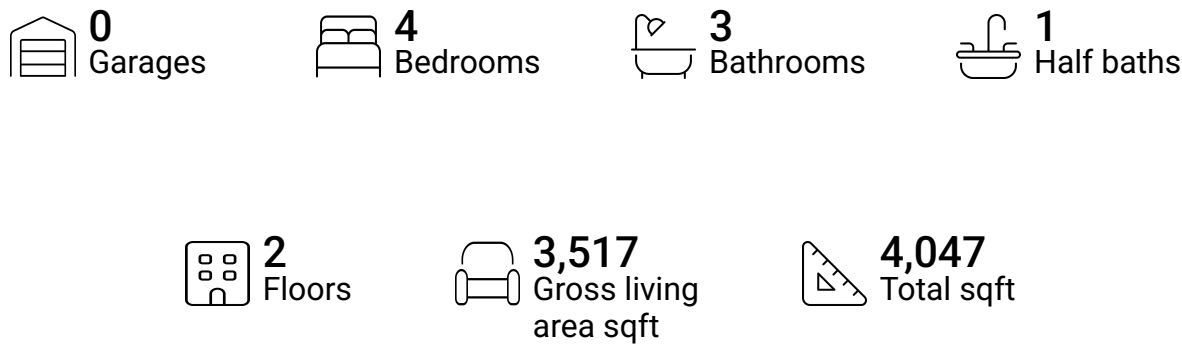


4507 Village Corner Drive, Brookwood, Pasadena,
Harris County, Texas, United States, 77059



Property summary



**4507 Village Corner Drive, Brookwood, Pasadena,
Harris County, Texas, United States, 77059**



Room dimensions

Floor 1

Total sqft: 2178 Living area: 2167

#		Dimensions	sqft	Counted as living area
1	Living Room	16'0" x 24'6"	398 sq. ft	Yes
2	Primary Bedroom	16'4" x 18'6"	272 sq. ft	Yes
3	Primary Bath	12'8" x 10'7"	108 sq. ft	Yes
4	WC	6'4" x 2'9"	17 sq. ft	Yes
5	WC	4'3" x 7'4"	25 sq. ft	Yes
6	Laundry	7'0" x 8'7"	61 sq. ft	Yes
7	Kitchen	14'4" x 16'2"	214 sq. ft	Yes
8	Breakfast Nook	11'9" x 8'4"	98 sq. ft	Yes
9	W.I.C.	6'5" x 8'6"	50 sq. ft	Yes
10	Office	14'0" x 15'0"	210 sq. ft	Yes
11	Hall	3'4" x 5'9"	19 sq. ft	Yes

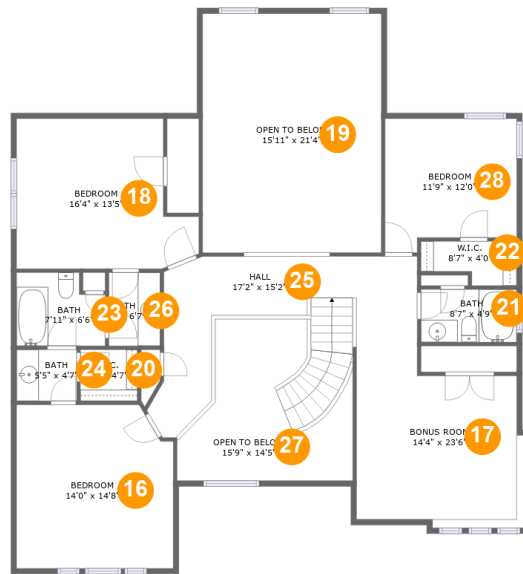
Scan captured on Wed, 26 Feb 2025 21:48:17 GMT

Information is calculated by Cubicasa technology deemed highly reliable but not guaranteed.

**4507 Village Corner Drive, Brookwood, Pasadena,
Harris County, Texas, United States, 77059**

#		Dimensions	sqft	Counted as living area
12	Dining Room	13'5" x 16'5"	206 sq. ft	Yes
13	Foyer	15'9" x 17'5"	218 sq. ft	Yes
14	Pantry	6'3" x 4'3"	27 sq. ft	Yes
15	W.I.C.	7'5" x 8'6"	48 sq. ft	Yes

**4507 Village Corner Drive, Brookwood, Pasadena,
Harris County, Texas, United States, 77059**



Room dimensions

Floor 2

Total sqft: 1869 Living area: 1350

#		Dimensions	sqft	Counted as living area
16	Bedroom	14'0" x 14'8"	198 sq. ft	Yes
17	Bonus Room	14'4" x 23'6"	254 sq. ft	Yes
18	Bedroom	16'4" x 13'5"	189 sq. ft	Yes
19	Open To Below	15'11" x 21'4"	341 sq. ft	No
20	W.I.C.	5'1" x 4'7"	23 sq. ft	Yes
21	Bath	8'7" x 4'9"	40 sq. ft	Yes
22	W.I.C.	8'7" x 4'0"	28 sq. ft	Yes
23	Bath	7'11" x 6'6"	47 sq. ft	Yes
24	Bath	5'5" x 4'7"	25 sq. ft	Yes
25	Hall	17'2" x 15'2"	189 sq. ft	Yes
26	Bath	4'7" x 6'7"	30 sq. ft	Yes

Scan captured on Wed, 26 Feb 2025 21:48:17 GMT

Information is calculated by Cubicasa technology deemed highly reliable but not guaranteed.

**4507 Village Corner Drive, Brookwood, Pasadena,
Harris County, Texas, United States, 77059**

#		Dimensions	sqft	Counted as living area
27	Open To Below	15'9" x 14'5"	152 sq. ft	No
28	Bedroom	11'9" x 12'0"	129 sq. ft	Yes

**4507 Village Corner Drive, Brookwood, Pasadena,
Harris County, Texas, United States, 77059**

1 Floor 1 - Living Room



Dimensions: 16'0" x 24'6"
Area: 398 sq. ft
Counted as living area: Yes

Heated: Yes
Finished: Yes
Enclosed: Yes
Contiguous: Yes
Permitted: Yes
Wet space: No
Addition: No
Conversion: No

2 Floor 1 - Primary Bedroom



Dimensions: 16'4" x 18'6"
Area: 272 sq. ft
Counted as living area: Yes

Heated: Yes
Finished: Yes
Enclosed: Yes
Contiguous: Yes
Permitted: Yes
Wet space: No
Addition: No
Conversion: No

4507 Village Corner Drive, Brookwood, Pasadena,
Harris County, Texas, United States, 77059

3 Floor 1 - Primary Bath



Dimensions: 12'8" x 10'7"
Area: 108 sq. ft
Counted as living area: Yes

Heated: Yes
Finished: Yes
Enclosed: Yes
Contiguous: Yes
Permitted: Yes
Wet space: Yes
Addition: No
Conversion: No

4 Floor 1 - WC



Dimensions: 6'4" x 2'9"
Area: 17 sq. ft
Counted as living area: Yes

Heated: Yes
Finished: Yes
Enclosed: Yes
Contiguous: Yes
Permitted: Yes
Wet space: Yes
Addition: No
Conversion: No

5 Floor 1 - WC



Dimensions: 4'3" x 7'4"
Area: 25 sq. ft
Counted as living area: Yes

Heated: Yes
Finished: Yes
Enclosed: Yes
Contiguous: Yes
Permitted: Yes
Wet space: Yes
Addition: No
Conversion: No

4507 Village Corner Drive, Brookwood, Pasadena,
Harris County, Texas, United States, 77059

6 Floor 1 - Laundry



Dimensions: 7'0" x 8'7"
Area: 61 sq. ft
Counted as living area: Yes

Heated: Yes
Finished: Yes
Enclosed: Yes
Contiguous: Yes
Permitted: Yes
Wet space: No
Addition: No
Conversion: No

7 Floor 1 - Kitchen



Dimensions: 14'4" x 16'2"
Area: 214 sq. ft
Counted as living area: Yes

Heated: Yes
Finished: Yes
Enclosed: Yes
Contiguous: Yes
Permitted: Yes
Wet space: No
Addition: No
Conversion: No

8 Floor 1 - Breakfast Nook



Dimensions: 11'9" x 8'4"
Area: 98 sq. ft
Counted as living area: Yes

Heated: Yes
Finished: Yes
Enclosed: Yes
Contiguous: Yes
Permitted: Yes
Wet space: No
Addition: No
Conversion: No

4507 Village Corner Drive, Brookwood, Pasadena,
Harris County, Texas, United States, 77059

9 Floor 1 - W.I.C.



Dimensions: 6'5" x 8'6"
Area: 50 sq. ft
Counted as living area: Yes

Heated: Yes
Finished: Yes
Enclosed: Yes
Contiguous: Yes
Permitted: Yes
Wet space: No
Addition: No
Conversion: No

10 Floor 1 - Office



Dimensions: 14'0" x 15'0"
Area: 210 sq. ft
Counted as living area: Yes

Heated: Yes
Finished: Yes
Enclosed: Yes
Contiguous: Yes
Permitted: Yes
Wet space: No
Addition: No
Conversion: No

11 Floor 1 - Hall



Dimensions: 3'4" x 5'9"
Area: 19 sq. ft
Counted as living area: Yes

Heated: Yes
Finished: Yes
Enclosed: Yes
Contiguous: Yes
Permitted: Yes
Wet space: No
Addition: No
Conversion: No

4507 Village Corner Drive, Brookwood, Pasadena,
Harris County, Texas, United States, 77059

12 Floor 1 - Dining Room



Dimensions: 13'5" x 16'5"
Area: 206 sq. ft
Counted as living area: Yes

Heated: Yes
Finished: Yes
Enclosed: Yes
Contiguous: Yes
Permitted: Yes
Wet space: No
Addition: No
Conversion: No

13 Floor 1 - Foyer



Dimensions: 15'9" x 17'5"
Area: 218 sq. ft
Counted as living area: Yes

Heated: Yes
Finished: Yes
Enclosed: Yes
Contiguous: Yes
Permitted: Yes
Wet space: No
Addition: No
Conversion: No

14 Floor 1 - Pantry



Dimensions: 6'3" x 4'3"
Area: 27 sq. ft
Counted as living area: Yes

Heated: Yes
Finished: Yes
Enclosed: Yes
Contiguous: Yes
Permitted: Yes
Wet space: No
Addition: No
Conversion: No

4507 Village Corner Drive, Brookwood, Pasadena,
Harris County, Texas, United States, 77059

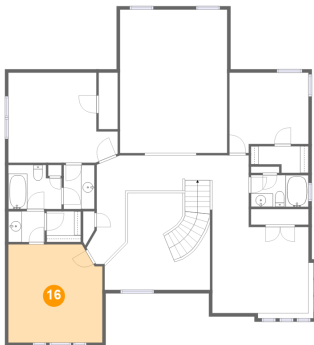
15 Floor 1 - W.I.C.



Dimensions: 7'5" x 8'6"
Area: 48 sq. ft
Counted as living area: Yes

Heated: Yes
Finished: Yes
Enclosed: Yes
Contiguous: Yes
Permitted: Yes
Wet space: No
Addition: No
Conversion: No

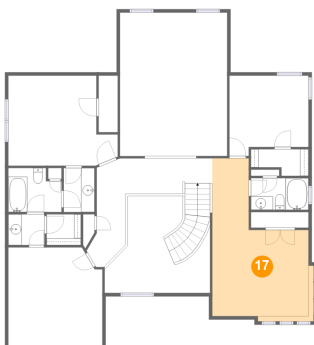
16 Floor 2 - Bedroom



Dimensions: 14'0" x 14'8"
Area: 198 sq. ft
Counted as living area: Yes

Heated: Yes
Finished: Yes
Enclosed: Yes
Contiguous: Yes
Permitted: Yes
Wet space: No
Addition: No
Conversion: No

17 Floor 2 - Bonus Room

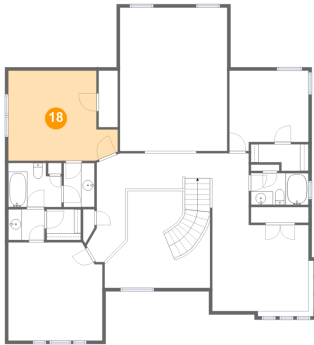


Dimensions: 14'4" x 23'6"
Area: 254 sq. ft
Counted as living area: Yes

Heated: Yes
Finished: Yes
Enclosed: Yes
Contiguous: Yes
Permitted: Yes
Wet space: No
Addition: No
Conversion: No

4507 Village Corner Drive, Brookwood, Pasadena,
Harris County, Texas, United States, 77059

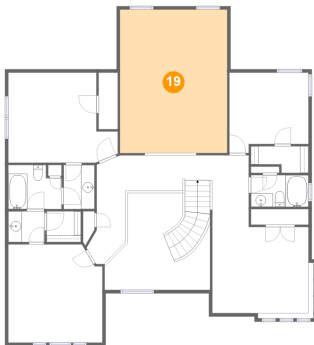
18 Floor 2 - Bedroom



Dimensions: 16'4" x 13'5"
Area: 189 sq. ft
Counted as living area: Yes

Heated: Yes
Finished: Yes
Enclosed: Yes
Contiguous: Yes
Permitted: Yes
Wet space: No
Addition: No
Conversion: No

19 Floor 2 - Open To Below



Dimensions: 15'11" x 21'4"
Area: 341 sq. ft
Counted as living area: No

Heated: No
Finished: No
Enclosed: No
Contiguous: Yes
Permitted: No
Wet space: No
Addition: No
Conversion: No

20 Floor 2 - W.I.C.



Dimensions: 5'1" x 4'7"
Area: 23 sq. ft
Counted as living area: Yes

Heated: Yes
Finished: Yes
Enclosed: Yes
Contiguous: Yes
Permitted: Yes
Wet space: No
Addition: No
Conversion: No

4507 Village Corner Drive, Brookwood, Pasadena,
Harris County, Texas, United States, 77059

21 Floor 2 - Bath



Dimensions: 8'7" x 4'9"
Area: 40 sq. ft
Counted as living area: Yes

Heated: Yes
Finished: Yes
Enclosed: Yes
Contiguous: Yes
Permitted: Yes
Wet space: Yes
Addition: No
Conversion: No

22 Floor 2 - W.I.C.



Dimensions: 8'7" x 4'0"
Area: 28 sq. ft
Counted as living area: Yes

Heated: Yes
Finished: Yes
Enclosed: Yes
Contiguous: Yes
Permitted: Yes
Wet space: No
Addition: No
Conversion: No

23 Floor 2 - Bath

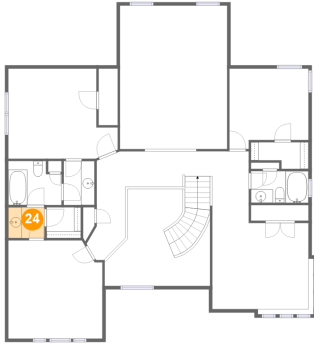


Dimensions: 7'11" x 6'6"
Area: 47 sq. ft
Counted as living area: Yes

Heated: Yes
Finished: Yes
Enclosed: Yes
Contiguous: Yes
Permitted: Yes
Wet space: Yes
Addition: No
Conversion: No

4507 Village Corner Drive, Brookwood, Pasadena,
Harris County, Texas, United States, 77059

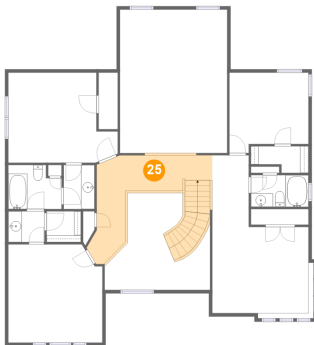
24 Floor 2 - Bath



Dimensions: 5'5" x 4'7"
Area: 25 sq. ft
Counted as living area: Yes

Heated: Yes
Finished: Yes
Enclosed: Yes
Contiguous: Yes
Permitted: Yes
Wet space: Yes
Addition: No
Conversion: No

25 Floor 2 - Hall



Dimensions: 17'2" x 15'2"
Area: 189 sq. ft
Counted as living area: Yes

Heated: Yes
Finished: Yes
Enclosed: Yes
Contiguous: Yes
Permitted: Yes
Wet space: No
Addition: No
Conversion: No

26 Floor 2 - Bath

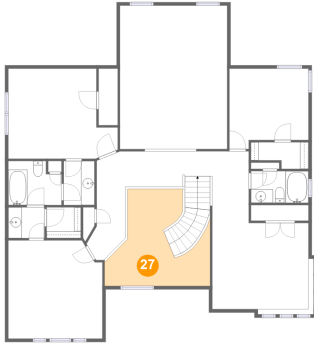


Dimensions: 4'7" x 6'7"
Area: 30 sq. ft
Counted as living area: Yes

Heated: Yes
Finished: Yes
Enclosed: Yes
Contiguous: Yes
Permitted: Yes
Wet space: Yes
Addition: No
Conversion: No

**4507 Village Corner Drive, Brookwood, Pasadena,
Harris County, Texas, United States, 77059**

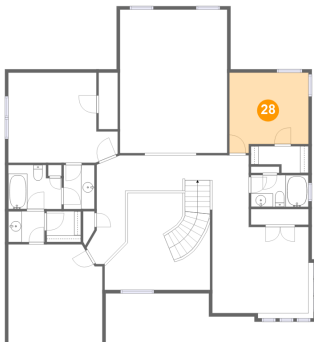
27 Floor 2 - Open To Below



Dimensions: 15'9" x 14'5"
Area: 152 sq. ft
Counted as living area: No

Heated: No
Finished: No
Enclosed: No
Contiguous: Yes
Permitted: No
Wet space: No
Addition: No
Conversion: No

28 Floor 2 - Bedroom



Dimensions: 11'9" x 12'0"
Area: 129 sq. ft
Counted as living area: Yes

Heated: Yes
Finished: Yes
Enclosed: Yes
Contiguous: Yes
Permitted: Yes
Wet space: No
Addition: No
Conversion: No