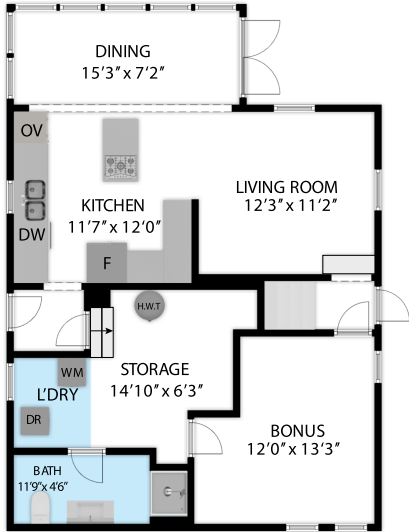
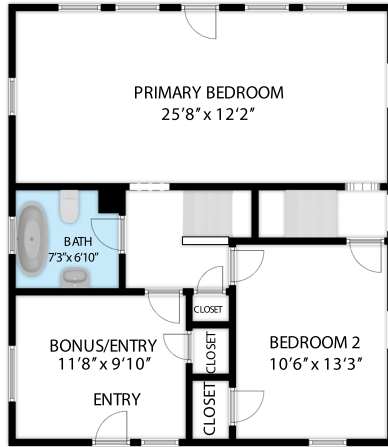


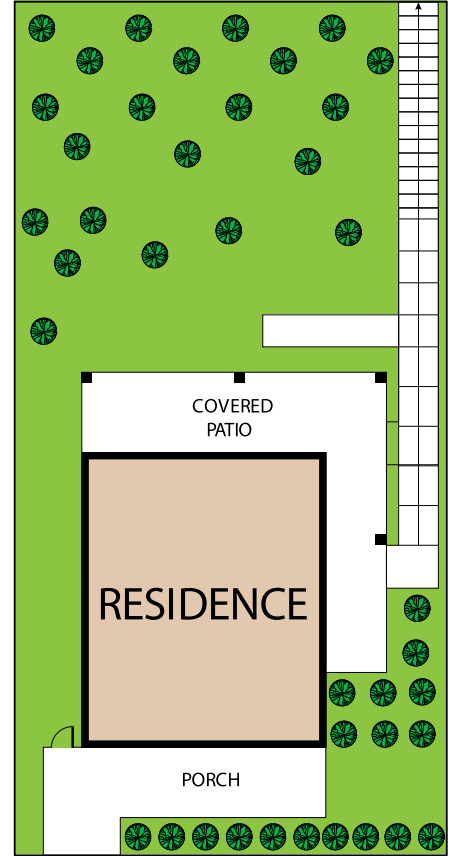
SECOND FLOOR



BASEMENT



FIRST FLOOR



9625 NW Roseway Ave, Portland 97231

TOTAL APPROX. FLOOR AREA 1,915 SQ.FT

Whilst every attempt has been made to ensure the accuracy of the floor plan contained here, measurements of doors, windows, rooms and any other items are approximate and no responsibility is taken for any error, omission, or misstatement. This plan is for illustrative purposes only and should be used as such by any prospective purchaser.

FIRST FLOOR	:	821 SQ.FT
SECOND FLOOR	:	762 SQ.FT
THIRD FLOOR	:	332 SQ.FT
TOTAL AREA	:	1,915 SQ.FT