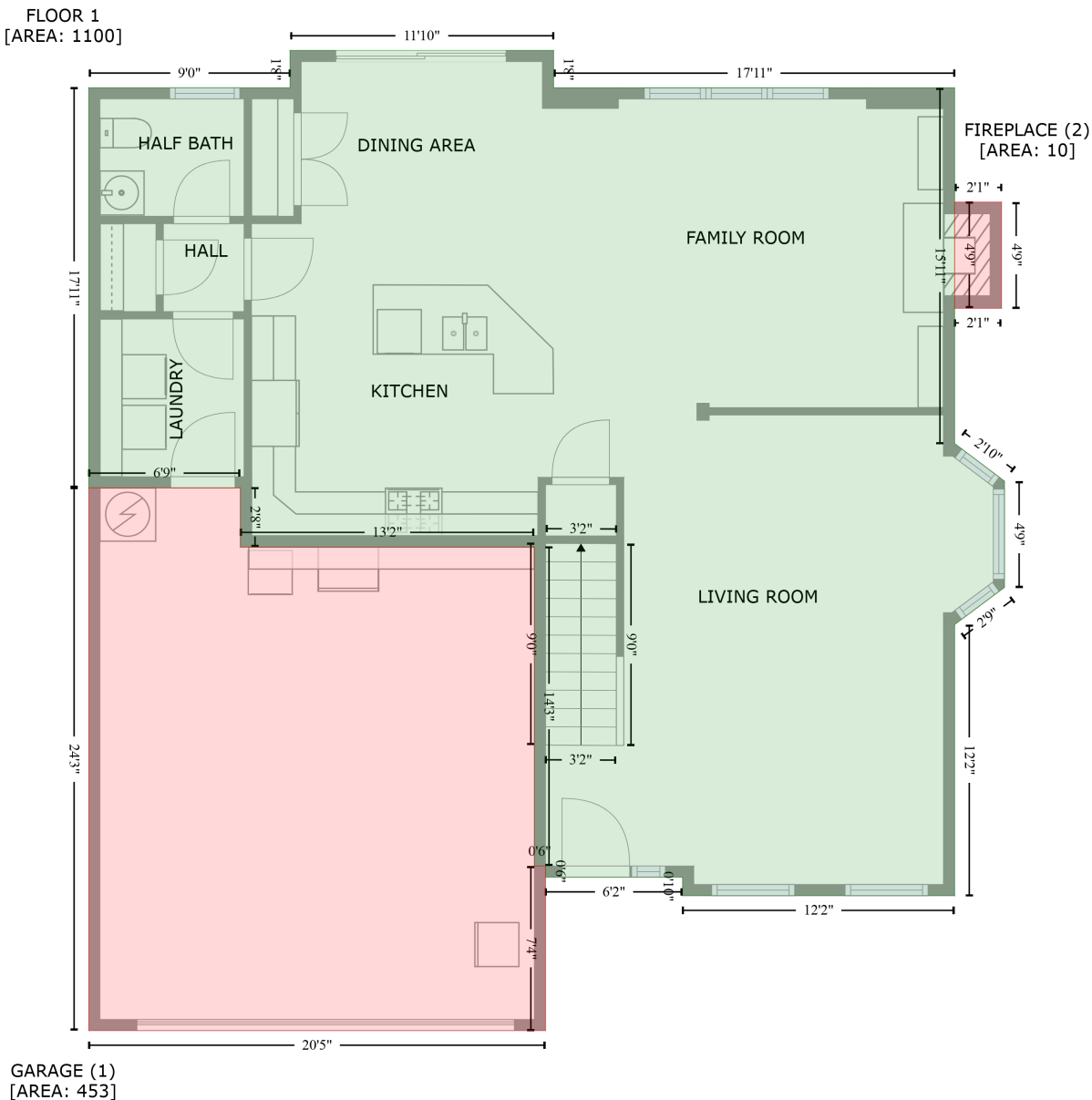


# 9159 Marasol Lane, Concord, Cabarrus County, North Carolina, United States, 28027

Gross Living Area: 2584 sq. ft



Space	Area (sq. ft)	Calculation <small>Coordinate Polygon Area Algorithm using inches</small>
FLOOR 1 (Living area)	1100	$  \begin{aligned}  & -((351.7 + 351.7) * (31.4 - 51.5) + (351.7 + 567) * (51.5 - 51.5) + (567 + 567) * (51.5 - 242.5) + \\  & (567 + 593.8) * (242.5 - 262.6) + (593.8 + 593.8) * (262.6 - 319.7) + (593.8 + 567) * (319.7 - \\  & 339.6) + (567 + 567) * (339.6 - 485.2) + (567 + 421) * (485.2 - 485.2) + (421 + 421) * (485.2 - \\  & 475.3) + (421 + 347.3) * (475.3 - 475.3) + (347.3 + 347.3) * (475.3 - 469.3) + (347.3 + 341.3) * \\  & (469.3 - 469.3) + (341.3 + 341.3) * (469.3 - 298) + (341.3 + 183.5) * (298 - 298) + (183.5 + 183.5) * \\  & * (298 - 266.2) + (183.5 + 102) * (266.2 - 266.2) + (102 + 102) * (266.2 - 51.4) + (102 + 210.1) * \\  & (51.4 - 51.4) + (210.1 + 210.1) * (51.4 - 31.4) + (210.1 + 351.7) * (31.4 - 31.4) * 0.5 * 0.00694  \end{aligned}  $

# 9159 Marasol Lane, Concord, Cabarrus County, North Carolina, United States, 28027

Gross Living Area: 2584 sq. ft

Space	Area (sq. ft)	Calculation <small>Coordinate Polygon Area Algorithm using inches</small>
GARAGE (Non-living area)	453	$-((183.5 + 183.5) * (266.2 - 298) + (183.5 + 341.3) * (298 - 298) + (341.3 + 341.3) * (298 - 469.3) + (341.3 + 347.3) * (469.3 - 469.3) + (347.3 + 347.3) * (469.3 - 557.6) + (347.3 + 102) * (557.6 - 557.6) + (102 + 102) * (557.6 - 266.2) + (102 + 183.5) * (266.2 - 266.2)) * 0.5 * 0.00694$
FIREPLACE (Non-living area)	10	$-((592.2 + 592.2) * (112.8 - 169.8) + (592.2 + 567) * (169.8 - 169.8) + (567 + 567) * (169.8 - 112.8) + (567 + 592.2) * (112.8 - 112.8)) * 0.5 * 0.00694$

# 9159 Marasol Lane, Concord, Cabarrus County, North Carolina, United States, 28027

Gross Living Area: 2584 sq. ft

FLOOR 2  
[AREA: 1484]



Space	Area (sq. ft)	Calculation <small>Coordinate Polygon Area Algorithm using inches</small>
FLOOR 2 (Living area)	1484	$  \begin{aligned}  & -((570 + 570) * (51.4 - 485.1) + (570 + 423.9) * (485.1 - 485.1) + (423.9 + 423.9) * (485.1 - 475.3) \\  & + (423.9 + 319.4) * (475.3 - 475.3) + (319.4 + 319.4) * (475.3 - 557.2) + (319.4 + 134.2) * (557.2 - \\  & 557.2) + (134.2 + 134.2) * (557.2 - 474.5) + (134.2 + 105) * (474.5 - 474.5) + (105 + 105) * \\  & (474.5 - 51.4) + (105 + 570) * (51.4 - 51.4)) * 0.5 * 0.00694  \end{aligned}  $