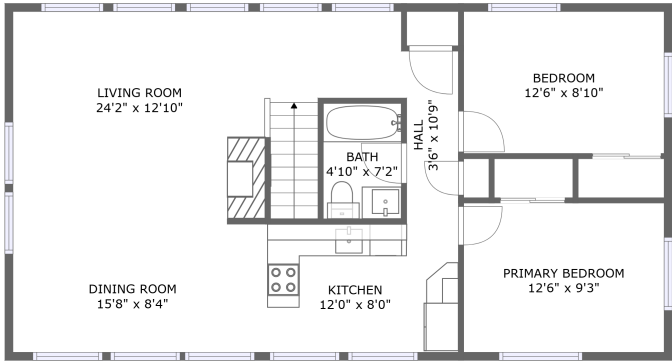
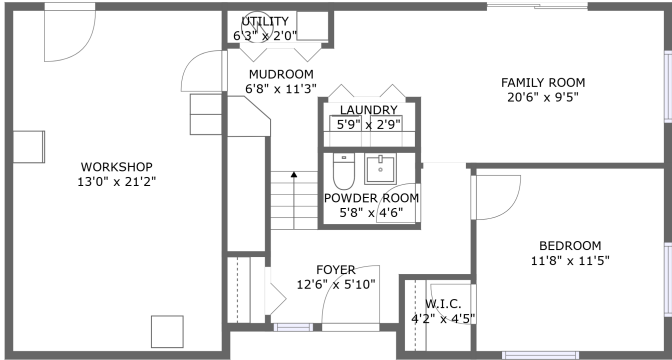


Home report

105 Forest Lake Drive, Byram Township, Sussex County, New Jersey, United States, 07821



FLOOR 2



FLOOR 1

Property summary



0  
Garages



3  
Bedrooms



1  
Bathrooms



1  
Half baths



2  
Floors



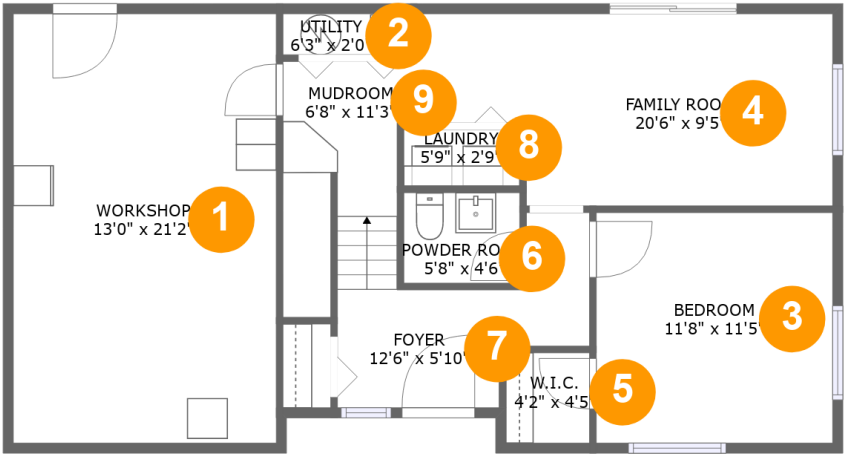
1,523  
Gross living  
area sqft



1,823  
Total sqft

Home report

105 Forest Lake Drive, Byram Township, Sussex County, New Jersey, United States, 07821



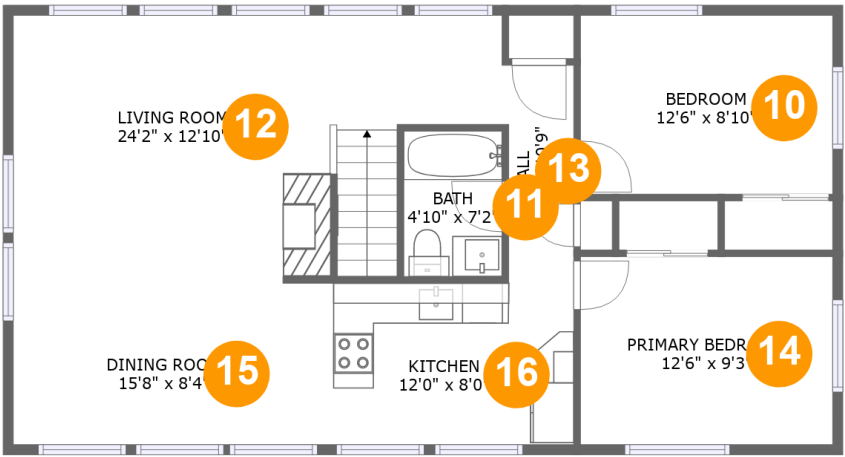
Room dimensions

Floor 1 Total sqft: 902    Living area: 602

#		Dimensions	sqft	Counted as living area
1	Workshop	13'0" x 21'2"	275 sq. ft	No
2	Utility	6'3" x 2'0"	13 sq. ft	Yes
3	Bedroom	11'8" x 11'5"	133 sq. ft	Yes
4	Family Room	20'6" x 9'5"	173 sq. ft	Yes
5	W.I.C.	4'2" x 4'5"	18 sq. ft	Yes
6	Powder Room	5'8" x 4'6"	26 sq. ft	Yes
7	Foyer	12'6" x 5'10"	71 sq. ft	Yes
8	Laundry	5'9" x 2'9"	16 sq. ft	Yes
9	Mudroom	6'8" x 11'3"	68 sq. ft	Yes

Home report

105 Forest Lake Drive, Byram Township, Sussex County, New Jersey, United States, 07821



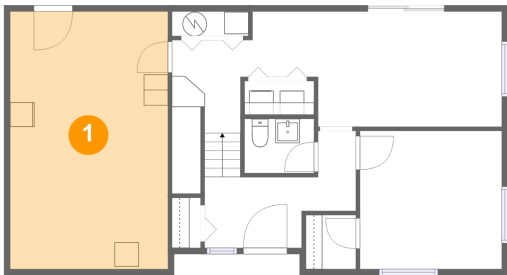
Room dimensions

Floor 2 Total sqft: 921    Living area: 921

#		Dimensions	sqft	Counted as living area
10	Bedroom	12'6" x 8'10"	110 sq. ft	Yes
11	Bath	4'10" x 7'2"	35 sq. ft	Yes
12	Living Room	24'2" x 12'10"	271 sq. ft	Yes
13	Hall	3'6" x 10'9"	36 sq. ft	Yes
14	Primary Bedroom	12'6" x 9'3"	116 sq. ft	Yes
15	Dining Room	15'8" x 8'4"	129 sq. ft	Yes
16	Kitchen	12'0" x 8'0"	96 sq. ft	Yes

105 Forest Lake Drive, Byram Township, Sussex County, New Jersey, United States, 07821

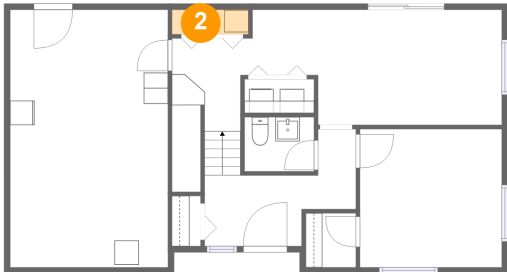
1 Floor 1 - Workshop



Dimensions: 13'0" x 21'2"  
Area: 275 sq. ft  
Counted as living area: No

Heated: No  
Finished: No  
Enclosed: Yes  
Contiguous: No  
Permitted: Yes  
Wet space: No  
Addition: No  
Conversion: No

2 Floor 1 - Utility



Dimensions: 6'3" x 2'0"  
Area: 13 sq. ft  
Counted as living area: Yes

Heated: Yes  
Finished: Yes  
Enclosed: Yes  
Contiguous: Yes  
Permitted: Yes  
Wet space: No  
Addition: No  
Conversion: No

## Home report

105 Forest Lake Drive, Byram Township, Sussex County, New Jersey, United States, 07821

### 3 Floor 1 - Bedroom

---

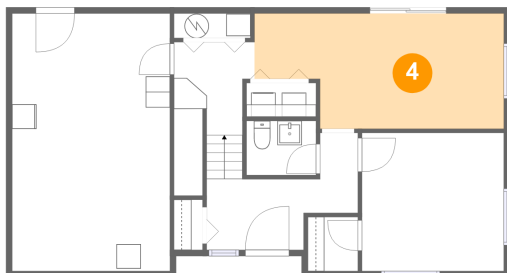


Dimensions: 11'8" x 11'5"  
Area: 133 sq. ft  
Counted as living area: Yes

Heated: Yes  
Finished: Yes  
Enclosed: Yes  
Contiguous: Yes  
Permitted: Yes  
Wet space: No  
Addition: No  
Conversion: No

### 4 Floor 1 - Family Room

---

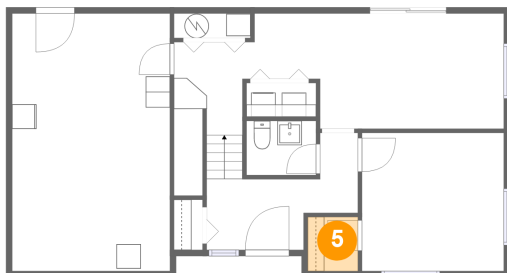


Dimensions: 20'6" x 9'5"  
Area: 173 sq. ft  
Counted as living area: Yes

Heated: Yes  
Finished: Yes  
Enclosed: Yes  
Contiguous: Yes  
Permitted: Yes  
Wet space: No  
Addition: No  
Conversion: No

### 5 Floor 1 - W.I.C.

---



Dimensions: 4'2" x 4'5"  
Area: 18 sq. ft  
Counted as living area: Yes

Heated: Yes  
Finished: Yes  
Enclosed: Yes  
Contiguous: Yes  
Permitted: Yes  
Wet space: No  
Addition: No  
Conversion: No

105 Forest Lake Drive, Byram Township, Sussex County, New Jersey, United States, 07821

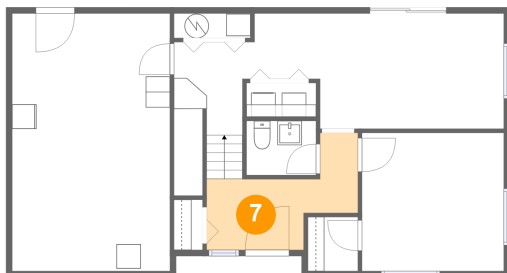
## 6 Floor 1 - Powder Room



Dimensions: 5'8" x 4'6"  
Area: 26 sq. ft  
Counted as living area: Yes

Heated: Yes  
Finished: Yes  
Enclosed: Yes  
Contiguous: Yes  
Permitted: Yes  
Wet space: Yes  
Addition: No  
Conversion: No

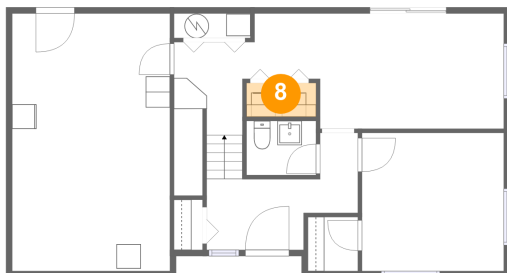
## 7 Floor 1 - Foyer



Dimensions: 12'6" x 5'10"  
Area: 71 sq. ft  
Counted as living area: Yes

Heated: Yes  
Finished: Yes  
Enclosed: Yes  
Contiguous: Yes  
Permitted: Yes  
Wet space: No  
Addition: No  
Conversion: No

## 8 Floor 1 - Laundry



Dimensions: 5'9" x 2'9"  
Area: 16 sq. ft  
Counted as living area: Yes

Heated: Yes  
Finished: Yes  
Enclosed: Yes  
Contiguous: Yes  
Permitted: Yes  
Wet space: No  
Addition: No  
Conversion: No

## Home report

105 Forest Lake Drive, Byram Township, Sussex County, New Jersey, United States, 07821

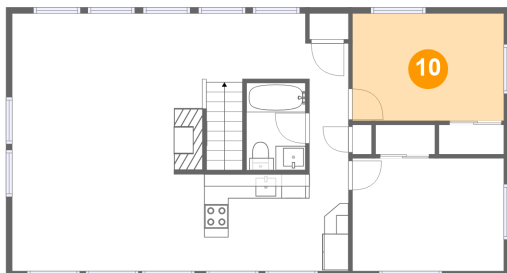
### 9 Floor 1 - Mudroom



Dimensions: 6'8" x 11'3"  
Area: 68 sq. ft  
Counted as living area: Yes

Heated: Yes  
Finished: Yes  
Enclosed: Yes  
Contiguous: Yes  
Permitted: Yes  
Wet space: No  
Addition: No  
Conversion: No

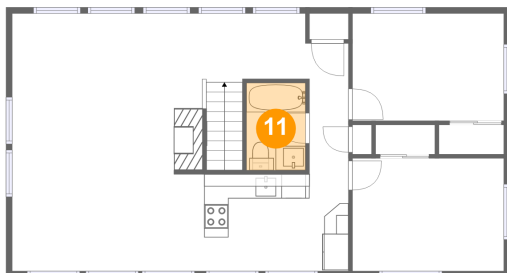
### 10 Floor 2 - Bedroom



Dimensions: 12'6" x 8'10"  
Area: 110 sq. ft  
Counted as living area: Yes

Heated: Yes  
Finished: Yes  
Enclosed: Yes  
Contiguous: Yes  
Permitted: Yes  
Wet space: No  
Addition: No  
Conversion: No

### 11 Floor 2 - Bath



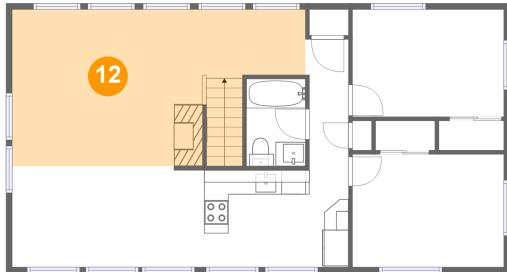
Dimensions: 4'10" x 7'2"  
Area: 35 sq. ft  
Counted as living area: Yes

Heated: Yes  
Finished: Yes  
Enclosed: Yes  
Contiguous: Yes  
Permitted: Yes  
Wet space: Yes  
Addition: No  
Conversion: No

## Home report

105 Forest Lake Drive, Byram Township, Sussex County, New Jersey, United States, 07821

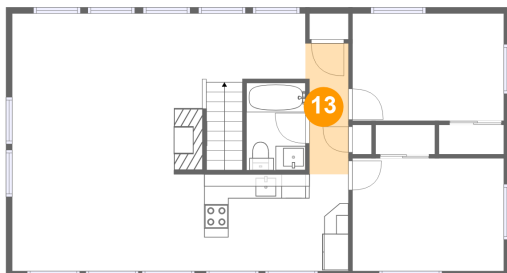
### 12 Floor 2 - Living Room



Dimensions: 24'2" x 12'10"  
Area: 271 sq. ft  
Counted as living area: Yes

Heated: Yes  
Finished: Yes  
Enclosed: Yes  
Contiguous: Yes  
Permitted: Yes  
Wet space: No  
Addition: No  
Conversion: No

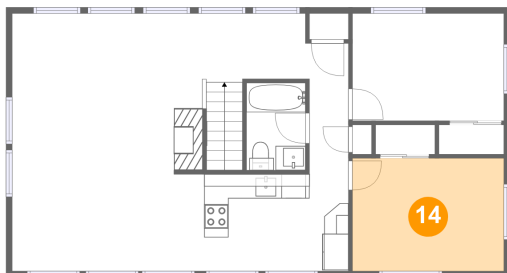
### 13 Floor 2 - Hall



Dimensions: 3'6" x 10'9"  
Area: 36 sq. ft  
Counted as living area: Yes

Heated: Yes  
Finished: Yes  
Enclosed: Yes  
Contiguous: Yes  
Permitted: Yes  
Wet space: No  
Addition: No  
Conversion: No

### 14 Floor 2 - Primary Bedroom



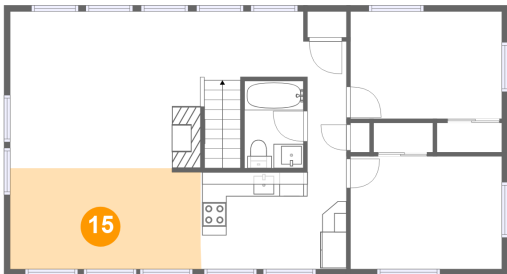
Dimensions: 12'6" x 9'3"  
Area: 116 sq. ft  
Counted as living area: Yes

Heated: Yes  
Finished: Yes  
Enclosed: Yes  
Contiguous: Yes  
Permitted: Yes  
Wet space: No  
Addition: No  
Conversion: No



105 Forest Lake Drive, Byram Township, Sussex County, New Jersey, United States, 07821

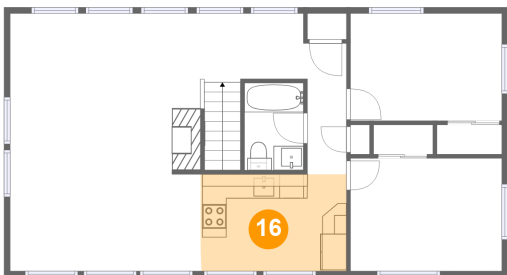
15 Floor 2 - Dining Room



Dimensions: 15'8" x 8'4"  
Area: 129 sq. ft  
Counted as living area: Yes

Heated: Yes  
Finished: Yes  
Enclosed: Yes  
Contiguous: Yes  
Permitted: Yes  
Wet space: No  
Addition: No  
Conversion: No

16 Floor 2 - Kitchen



Dimensions: 12'0" x 8'0"  
Area: 96 sq. ft  
Counted as living area: Yes

Heated: Yes  
Finished: Yes  
Enclosed: Yes  
Contiguous: Yes  
Permitted: Yes  
Wet space: No  
Addition: No  
Conversion: No