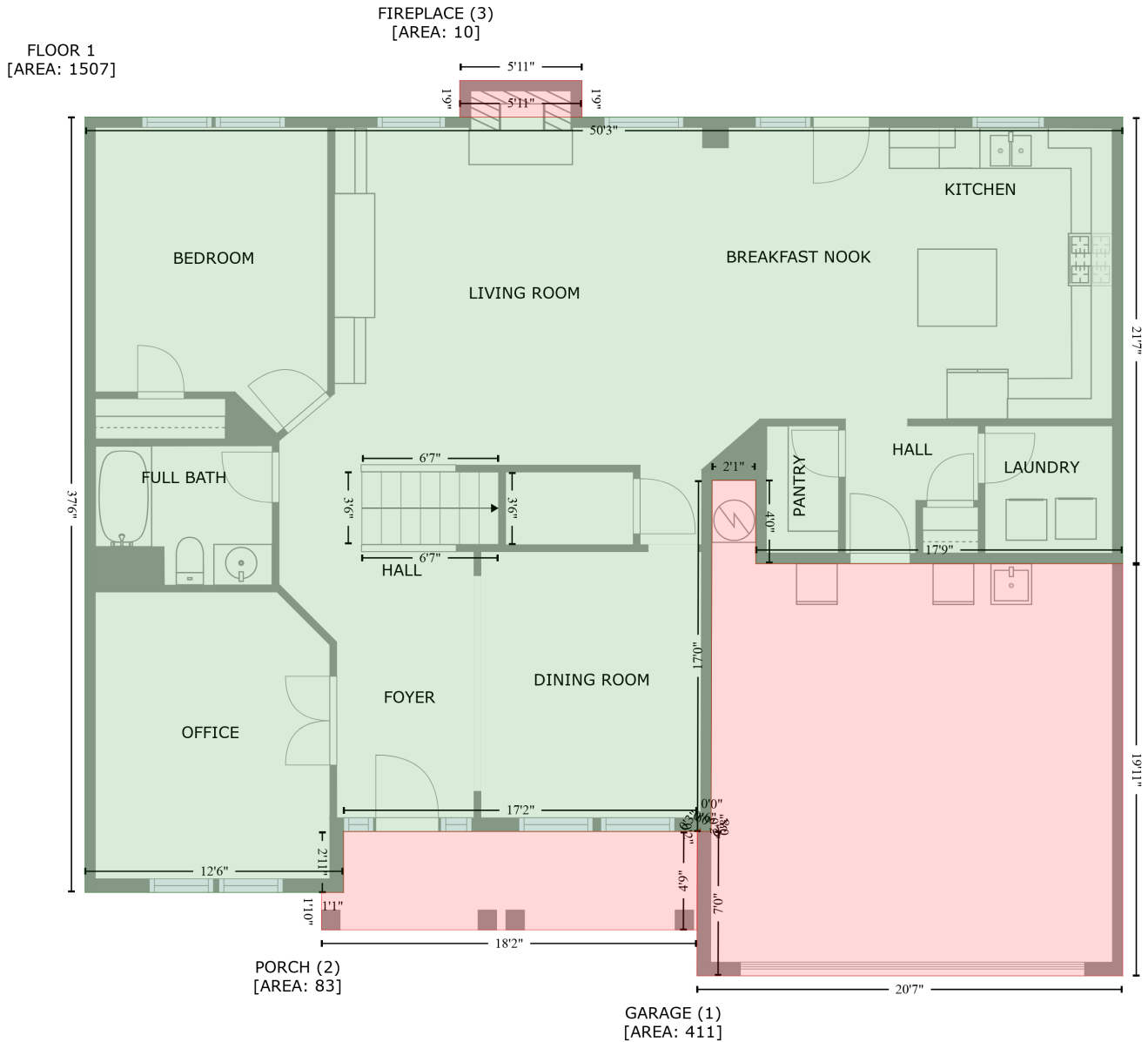


# 1903 Robbins Meadows Drive, Waxhaw, Union County, North Carolina, United States, 28173

Gross Living Area: 3190 sq. ft



Space	Area (sq. ft)	Calculation <small>Coordinate Polygon Area Algorithm using inches</small>
FLOOR 1 (Living area)	1507	$-\left((620.2 + 620.2) * (63.3 - 322.5) + (620.2 + 407) * (322.5 - 322.5) + (407 + 407) * (322.5 - 274.1) + (407 + 381.6) * (274.1 - 274.1) + (381.6 + 381) * (274.1 - 478.1) + (381 + 375) * (478.1 - 478) + (375 + 374.8) * (478 - 476) + (374.8 + 373) * (476 - 478) + (373 + 167.4) * (478 - 478) + (167.4 + 167.4) * (478 - 513.5) + (167.4 + 17.2) * (513.5 - 513.5) + (17.2 + 17.2) * (513.5 - 63.3) + (17.2 + 620.2) * (63.3 - 63.3)\right) * 0.5 * 0.00694$
GARAGE	411	$-\left((407 + 407) * (274.1 - 322.5) + (407 + 620.2) * (322.5 - 322.5) + (620.2 + 620.2) * (322.5 - \right.$

# 1903 Robbins Meadows Drive, Waxhaw, Union County, North Carolina, United States, 28173

Gross Living Area: 3190 sq. ft

Space	Area (sq. ft)	Calculation <small>Coordinate Polygon Area Algorithm using inches</small>
(Non-living area)		$561.9 + (620.2 + 372.8) * (561.9 - 561.9) + (372.8 + 373) * (561.9 - 478) + (373 + 372.8) * (478 - 478) + (372.8 + 374.8) * (478 - 476.4) + (374.8 + 375) * (476.4 - 478) + (375 + 381) * (478 - 478.1) + (381 + 381.1) * (478.1 - 470.1) + (381.1 + 381) * (470.1 - 470.1) + (381 + 381.6) * (470.1 - 274.1) + (381.6 + 407) * (274.1 - 274.1) * 0.5 * 0.00694$
PORCH (Non-living area)	83	$-((373 + 372.8) * (478 - 535.2) + (372.8 + 154.6) * (535.2 - 535.2) + (154.6 + 154.6) * (535.2 - 513.5) + (154.6 + 167.4) * (513.5 - 513.5) + (167.4 + 167.4) * (513.5 - 478) + (167.4 + 373) * (478 - 478)) * 0.5 * 0.00694$
FIREPLACE (Non-living area)	10	$-((306 + 306) * (42 - 63.3) + (306 + 234.9) * (63.3 - 63.3) + (234.9 + 234.9) * (63.3 - 42) + (234.9 + 306) * (42 - 42)) * 0.5 * 0.00694$



# 1903 Robbins Meadows Drive, Waxhaw, Union County, North Carolina, United States, 28173

Gross Living Area: 3190 sq. ft

Space	Area (sq. ft)	Calculation <small>Coordinate Polygon Area Algorithm using inches</small>
		$(470.3 - 367.7) + (162.8 + 162.8) * (367.7 - 314.8) + (162.8 + 203.6) * (314.8 - 269.5) + (203.6 + 335.1) * (269.5 - 269.5) * 0.5 * 0.00694$