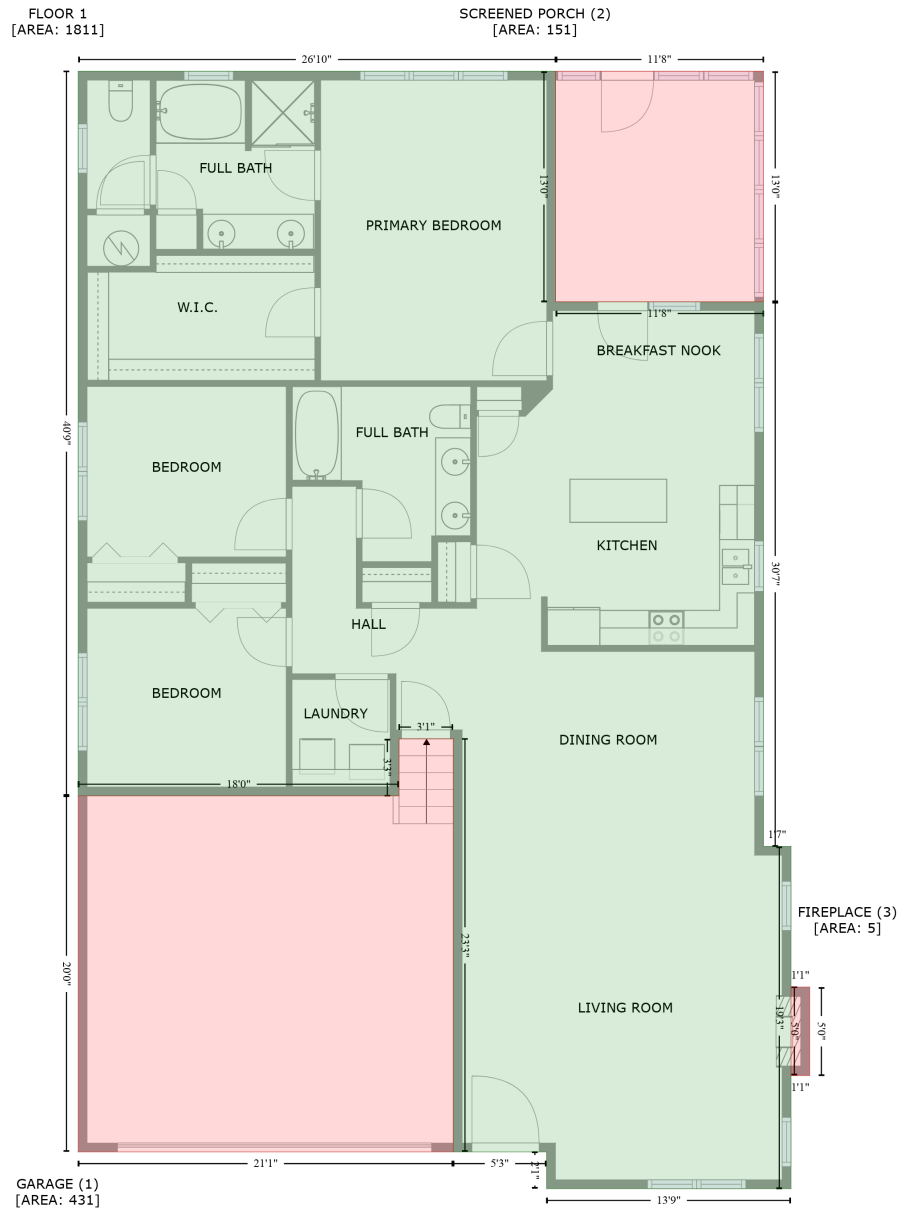


7509 Thorn Creek Lane, Tega Cay, York County, South Carolina, United States, 29708

Gross Living Area: 1811 sq. ft



Space	Area (sq. ft)	Calculation <small>Coordinate Polygon Area Algorithm using inches</small>
FLOOR 1 (Living area)	1811	$-\left((336.3 + 336.3) * (24.7 - 180.2) + (336.3 + 476.5) * (180.2 - 180.2) + (476.5 + 476.5) * (180.2 - 547.5) + (476.5 + 495) * (547.5 - 547.5) + (495 + 495) * (547.5 - 778.4) + (495 + 330.2) * (778.4 - 778.4) + (330.2 + 330.2) * (778.4 - 753.6) + (330.2 + 267.3) * (753.6 - 753.6) + (267.3 + 267.3) * (753.6 - 475) + (267.3 + 230.7) * (475 - 475) + (230.7 + 230.7) * (475 - 513.5) + (230.7 + 14.5) * (513.5 - 513.5) + (14.5 + 14.5) * (513.5 - 24.7) + (14.5 + 336.3) * (24.7 - 24.7)\right) * 0.5 * 0.00694$
GARAGE	431	$-\left((267.3 + 267.3) * (475 - 753.6) + (267.3 + 14.5) * (753.6 - 753.6) + (14.5 + 14.5) * (753.6 - 753.6) + (14.5 + 14.5) * (753.6 - 753.6)\right) * 0.5 * 0.00694$

7509 Thorn Creek Lane, Tega Cay, York County, South Carolina, United States, 29708

Gross Living Area: 1811 sq. ft

Space	Area (sq. ft)	Calculation <small>Coordinate Polygon Area Algorithm using inches</small>
(Non-living area)		$513.5 + (14.5 + 230.7) * (513.5 - 513.5) + (230.7 + 230.7) * (513.5 - 475) + (230.7 + 267.3) * (475 - 475) * 0.5 * 0.00694$
SCREENED PORCH (Non-living area)	151	$-((476.5 + 476.5) * (24.7 - 180.2) + (476.5 + 336.3) * (180.2 - 180.2) + (336.3 + 336.3) * (180.2 - 24.7) + (336.3 + 476.5) * (24.7 - 24.7)) * 0.5 * 0.00694$
FIREPLACE (Non-living area)	5	$-((507.6 + 507.6) * (642.4 - 702.1) + (507.6 + 495) * (702.1 - 702.1) + (495 + 495) * (702.1 - 642.4) + (495 + 507.6) * (642.4 - 642.4)) * 0.5 * 0.00694$