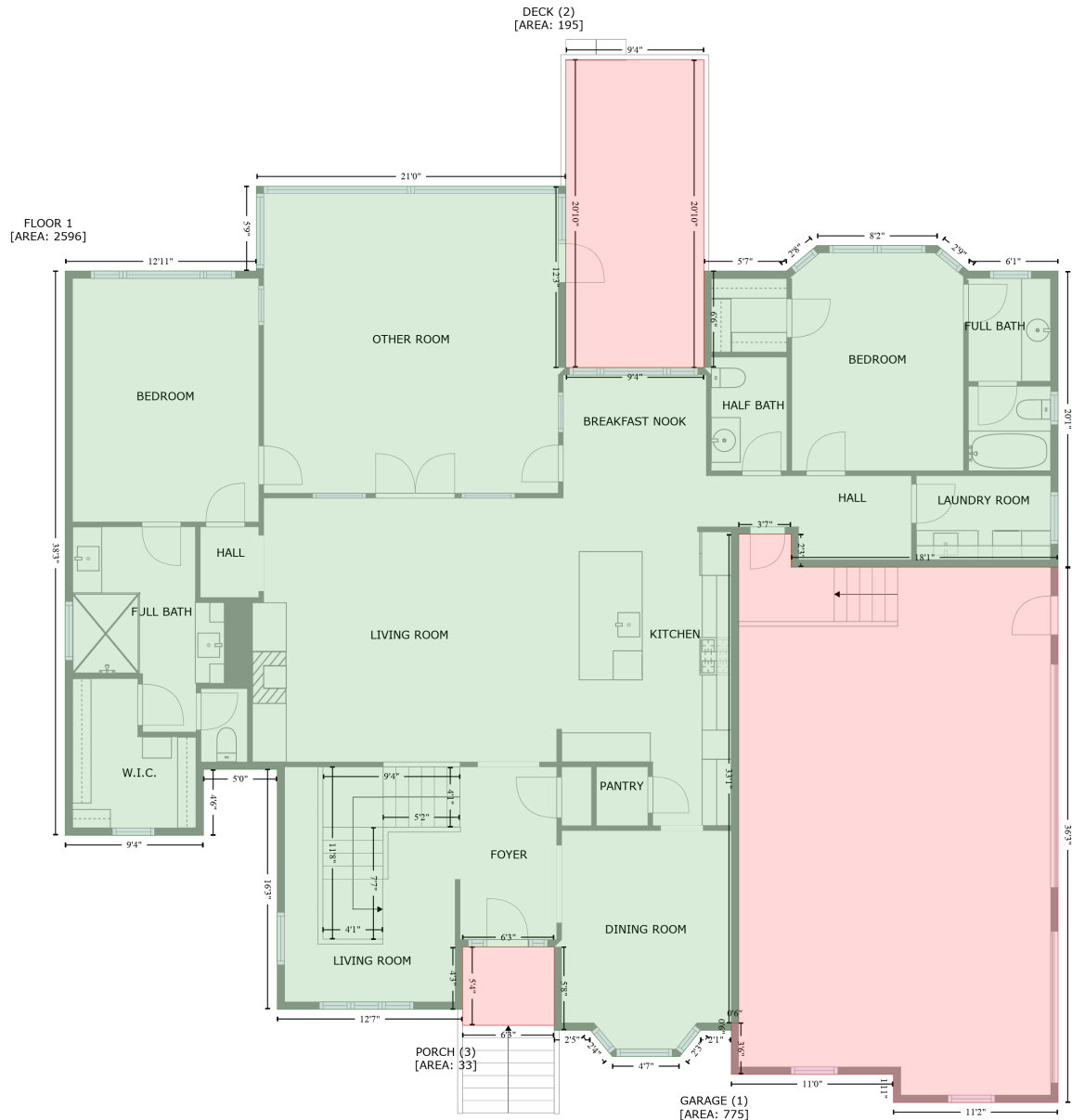


2085 Sugar Pond Court, Fort Mill, York County, South Carolina, United States, 29715

Gross Living Area: 3745 sq. ft



Space	Area (sq. ft)	Calculation
FLOOR 1 (Living area)	2596	Coordinate Polygon Area Algorithm using inches $-((428.6 + 428.6) * (109.4 - 256.8) + (428.6 + 541) * (256.8 - 256.8) + (541 + 541) * (256.8 - 178.3) + (541 + 608.3) * (178.3 - 178.3) + (608.3 + 632.9) * (178.3 - 157.6) + (632.9 + 731) * (157.6 - 157.6) + (731 + 756.2) * (157.6 - 178.3) + (756.2 + 829.1) * (178.3 - 178.3) + (829.1 + 829.1) * (178.3 - 419) + (829.1 + 612) * (419 - 419) + (612 + 612) * (419 - 392.2) + (612 + 569.3) * (392.2 - 392.2) + (569.3 + 569.3) * (392.2 - 789.4) + (569.3 + 563.3) * (789.4 - 789.4) + (563.3 + 563.3) * (789.4 - 795.4) + (563.3 + 538.2) * (795.4 - 795.4) + (538.2 + 521.4) * (795.4 - 816.7) + (521.4 + 466.6) * (816.7 - 816.7) + (466.6 + 448.8) * (816.7 - 795.4) + (448.8 + 419.3) * (795.4 -$

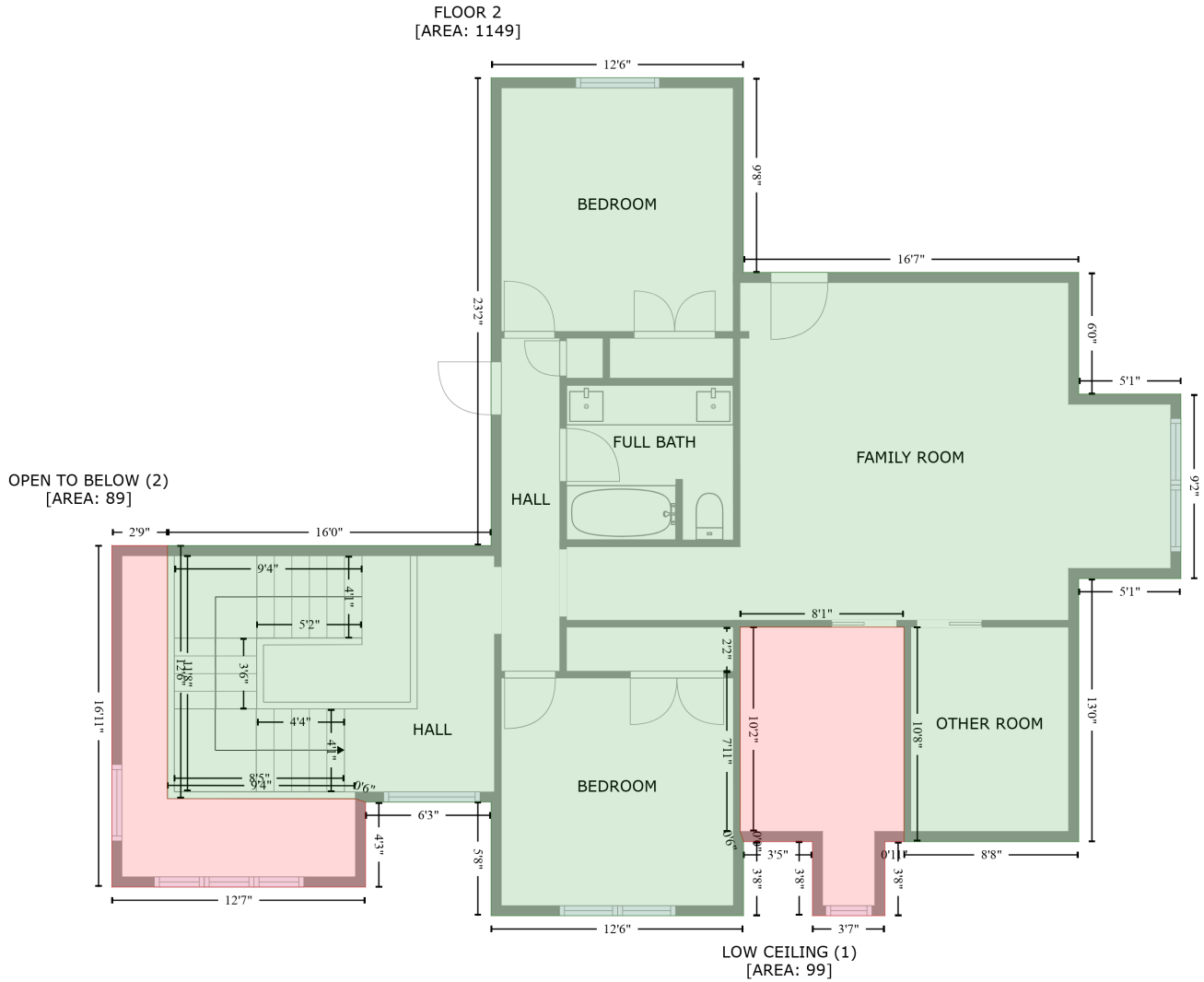
2085 Sugar Pond Court, Fort Mill, York County, South Carolina, United States, 29715

Gross Living Area: 3745 sq. ft

Space	Area (sq. ft)	Calculation <small>Coordinate Polygon Area Algorithm using inches</small>
		$795.4 + (419.3 + 419.3) * (795.4 - 727.7) + (419.3 + 344.7) * (727.7 - 727.7) + (344.7 + 344.7) * (727.7 - 778.3) + (344.7 + 194) * (778.3 - 778.3) + (194 + 194) * (778.3 - 583.3) + (194 + 134) * (583.3 - 583.3) + (134 + 134) * (583.3 - 636.9) + (134 + 21.5) * (636.9 - 636.9) + (21.5 + 21.5) * (636.9 - 178.3) + (21.5 + 176.9) * (178.3 - 178.3) + (176.9 + 176.9) * (178.3 - 109.4) + (176.9 + 428.6) * (109.4 - 109.4) * 0.5 * 0.00694$
GARAGE (Non-living area)	775	$-((612 + 612) * (392.2 - 419) + (612 + 829.1) * (419 - 419) + (829.1 + 829.1) * (419 - 854) + (829.1 + 695.2) * (854 - 854) + (695.2 + 695.2) * (854 - 831.2) + (695.2 + 563.3) * (831.2 - 831.2) + (563.3 + 563.3) * (831.2 - 789.4) + (563.3 + 569.3) * (789.4 - 789.4) + (569.3 + 569.3) * (789.4 - 392.2) + (569.3 + 612) * (392.2 - 392.2)) * 0.5 * 0.00694$
DECK (Non-living area)	195	$-((541 + 541) * (6.6 - 256.8) + (541 + 428.6) * (256.8 - 256.8) + (428.6 + 428.6) * (256.8 - 6.6) + (428.6 + 541) * (6.6 - 6.6)) * 0.5 * 0.00694$
PORCH (Non-living area)	33	$-((419.3 + 419.3) * (727.7 - 791.4) + (419.3 + 344.7) * (791.4 - 791.4) + (344.7 + 344.7) * (791.4 - 727.7) + (344.7 + 419.3) * (727.7 - 727.7)) * 0.5 * 0.00694$

2085 Sugar Pond Court, Fort Mill, York County, South Carolina, United States, 29715

Gross Living Area: 3745 sq. ft



Space	Area (sq. ft)	Calculation
FLOOR 2 (Living area)	1149	Coordinate Polygon Area Algorithm using inches $-((569.1 + 569.1) * (297.2 - 413) + (569.1 + 768.4) * (413 - 413) + (768.4 + 768.4) * (413 - 485.3) + (768.4 + 829.1) * (485.3 - 485.3) + (829.1 + 829.1) * (485.3 - 594.9) + (829.1 + 768.4) * (594.9 - 594.9) + (768.4 + 768.4) * (594.9 - 751.4) + (768.4 + 664.7) * (751.4 - 751.4) + (664.7 + 664.7) * (751.4 - 623.8) + (664.7 + 567.2) * (623.8 - 623.8) + (567.2 + 567.2) * (623.8 - 650) + (567.2 + 567.3) * (650 - 745.4) + (567.3 + 569.3) * (745.4 - 751.4) + (569.3 + 569.3) * (751.4 - 795.4) + (569.3 + 419.3) * (795.4 - 795.4) + (419.3 + 419.3) * (795.4 - 727.8) + (419.3 + 344.7) * (727.8 - 727.8) + (344.7 + 338.7) * (727.8 - 726) + (338.7 + 227) * (726 - 725.8) + (227 + 227) * (725.8 - 575.3) + (227 + 419.3) * (575.3 - 575.3) + (419.3 + 419.3) * (575.3 - 297.2) + (419.3 + 569.1) * (297.2 - 297.2)) * 0.5 + 0.00694$
LOW CEILING (Non-living area)	99	$-((664.7 + 664.7) * (623.8 - 751.4) + (664.7 + 653.3) * (751.4 - 751.4) + (653.3 + 653.3) * (751.4 - 795.4) + (653.3 + 610.2) * (795.4 - 795.4) + (610.2 + 610.2) * (795.4 - 751.4) + (610.2 + 569.3) * (751.4 - 751.4) + (569.3 + 569.3) * (751.4 - 751.2) + (569.3 + 567.3) * (751.2 - 745.4) + (567.3 +$

2085 Sugar Pond Court, Fort Mill, York County, South Carolina, United States, 29715

Gross Living Area: 3745 sq. ft

Space	Area (sq. ft)	Calculation <small>Coordinate Polygon Area Algorithm using inches</small>
OPEN TO BELOW (Non-living area)	89	$567.3 * (745.4 - 623.8) + (567.3 + 664.7) * (623.8 - 623.8) * 0.5 * 0.00694$ $-((227 + 227) * (575.3 - 725.8) + (227 + 338.7) * (725.8 - 726) + (338.7 + 344.7) * (726 - 727.8) +$ $(344.7 + 344.7) * (727.8 - 778.3) + (344.7 + 194) * (778.3 - 778.3) + (194 + 194) * (778.3 - 575.3)$ $+ (194 + 227) * (575.3 - 575.3)) * 0.5 * 0.00694$