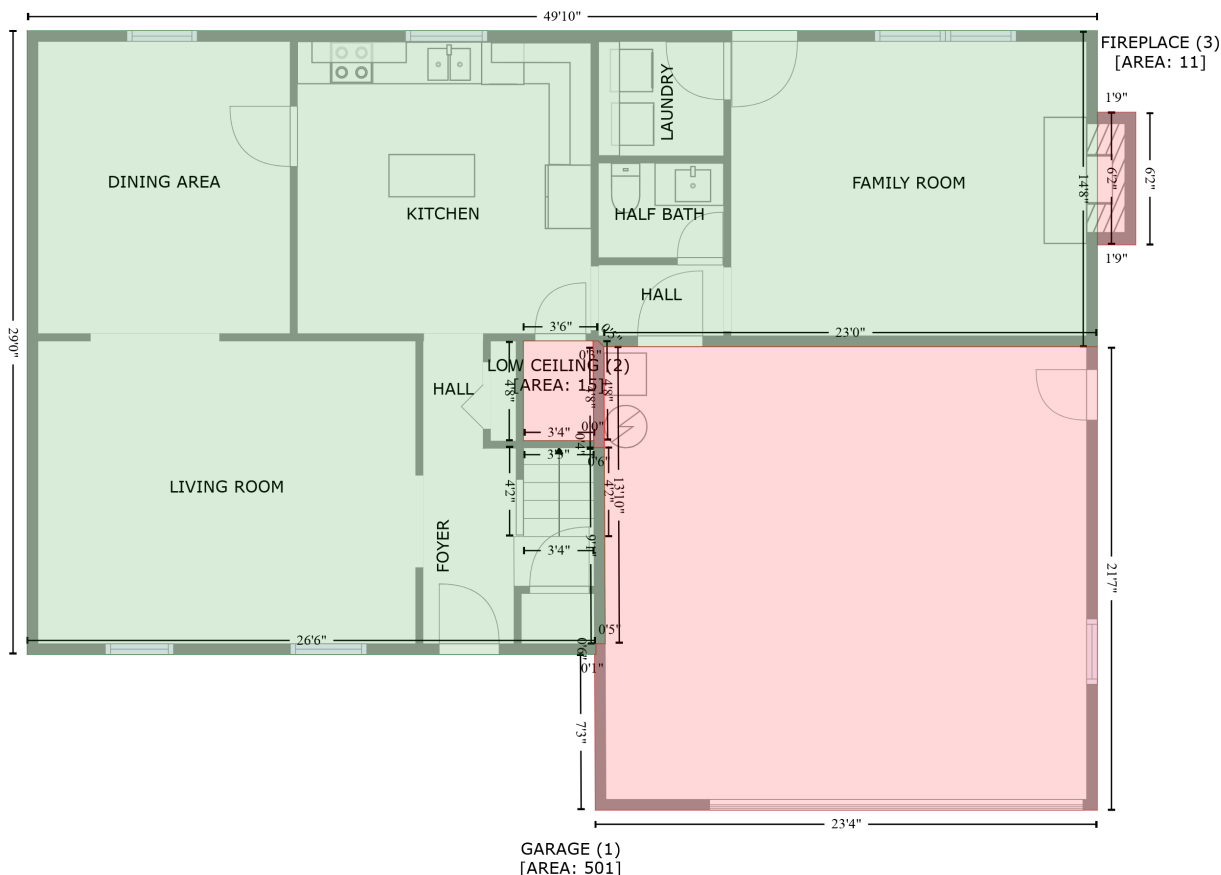


4730 Autumn Leaf Lane, Raintree, Charlotte, Mecklenburg County, North Carolina, United States, 28277

Gross Living Area: 1879 sq. ft

FLOOR 1
[AREA: 1100]

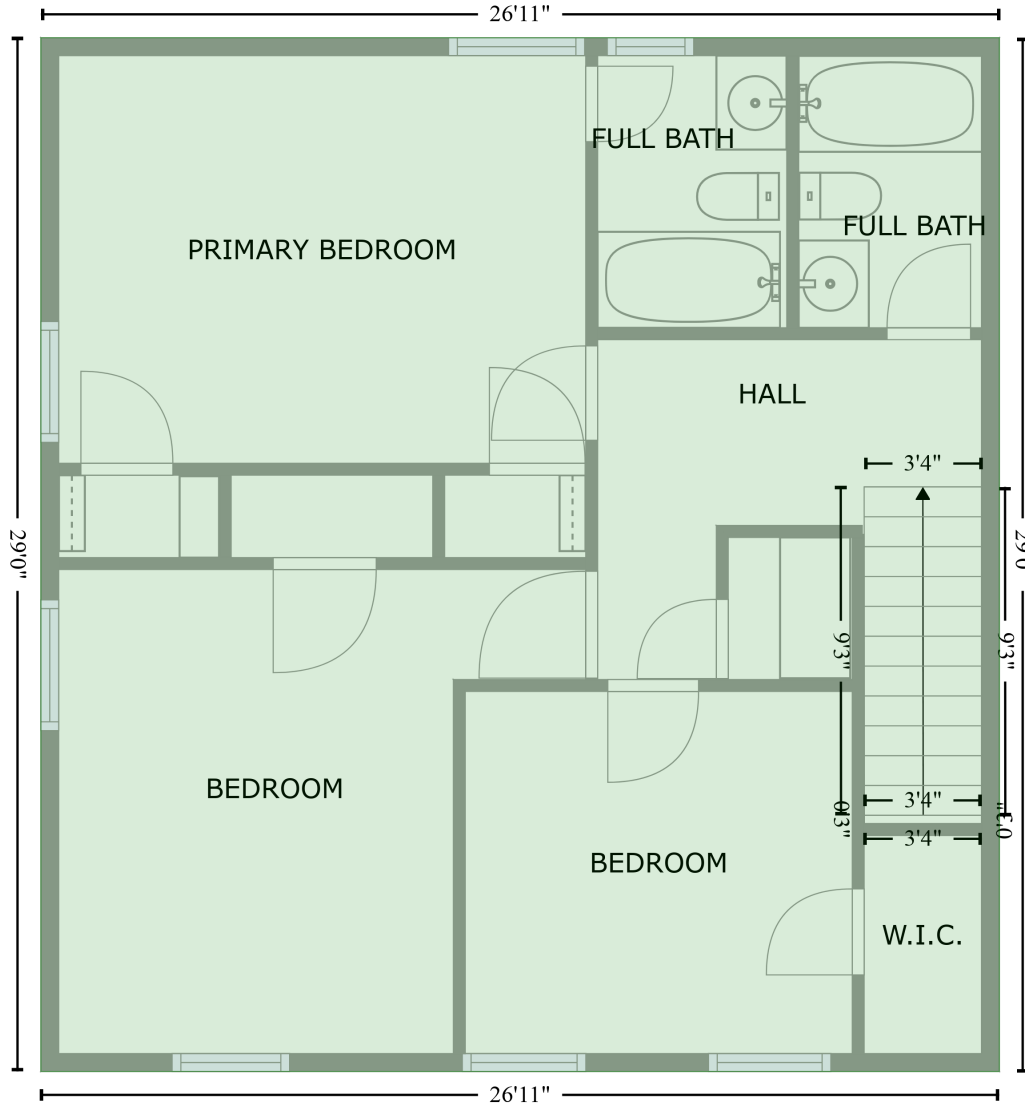


Space	Area (sq. ft)	Calculation
FLOOR 1 (Living area)	1100	$-\left((600.6 + 600.6) * (-0.7 - 175.8) + (600.6 + 325) * (175.8 - 175.8) + (325 + 321.8) * (175.8 - 172.6) + (321.8 + 280) * (172.6 - 172.6) + (280 + 280) * (172.6 - 228.3) + (280 + 319.4) * (228.3 - 228.3) + (319.4 + 319.4) * (228.3 - 232.3) + (319.4 + 325.2) * (232.3 - 232.2) + (325.2 + 325.7) * (232.2 - 341.7) + (325.7 + 320.5) * (341.7 - 341.7) + (320.5 + 320.5) * (341.7 - 347.7) + (320.5 + 2.8) * (347.7 - 347.7) + (2.8 + 2.8) * (347.7 - -0.7) + (2.8 + 600.6) * (-0.7 - -0.7)\right) * 0.5 * 0.00694$
GARAGE (Non-living area)	501	$-\left((600.6 + 600.6) * (175.8 - 434.7) + (600.6 + 320.2) * (434.7 - 434.7) + (320.2 + 319.8) * (434.7 - 347.7) + (319.8 + 320.5) * (347.7 - 347.7) + (320.5 + 320.5) * (347.7 - 341.7) + (320.5 + 325.7) * (341.7 - 341.7) + (325.7 + 325) * (341.7 - 175.8) + (325 + 600.6) * (175.8 - 175.8)\right) * 0.5 * 0.00694 - \left((321.8 + 325) * (172.6 - 175.8) + (325 + 325.2) * (175.8 - 232.2) + (325.2 + 319.4) * (232.2 - 232.3) + (319.4 + 319.4) * (232.3 - 228.3) + (319.4 + 319.2) * (228.3 - 228.3) + (319.2 + 318.8) * (228.3 - 172.6) + (318.8 + 321.8) * (172.6 - 172.6)\right) * 0.5 * 0.00694$
LOW CEILING (Non-living area)	15	$-\left((319 + 319.4) * (172.6 - 228.3) + (319.4 + 280) * (228.3 - 228.3) + (280 + 280) * (228.3 - 172.6) + (280 + 319) * (172.6 - 172.6)\right) * 0.5 * 0.00694$
FIREPLACE (Non-living area)	11	$-\left((622.1 + 622.1) * (44.8 - 119) + (622.1 + 600.6) * (119 - 119) + (600.6 + 600.6) * (119 - 44.8) + (600.6 + 622.1) * (44.8 - 44.8)\right) * 0.5 * 0.00694$

4730 Autumn Leaf Lane, Raintree, Charlotte, Mecklenburg County, North Carolina, United States, 28277

Gross Living Area: 1879 sq. ft

FLOOR 2
[AREA: 779]



Space	Area (sq. ft)	Calculation <small>Coordinate Polygon Area Algorithm using inches</small>
FLOOR 2 (Living area)	779	$-((325.6 + 325.6) * (0 - 347.7) + (325.6 + 2.8) * (347.7 - 347.7) + (2.8 + 2.8) * (347.7 - 0) + (2.8 + 325.6) * (0 - 0)) * 0.5 * 0.00694$