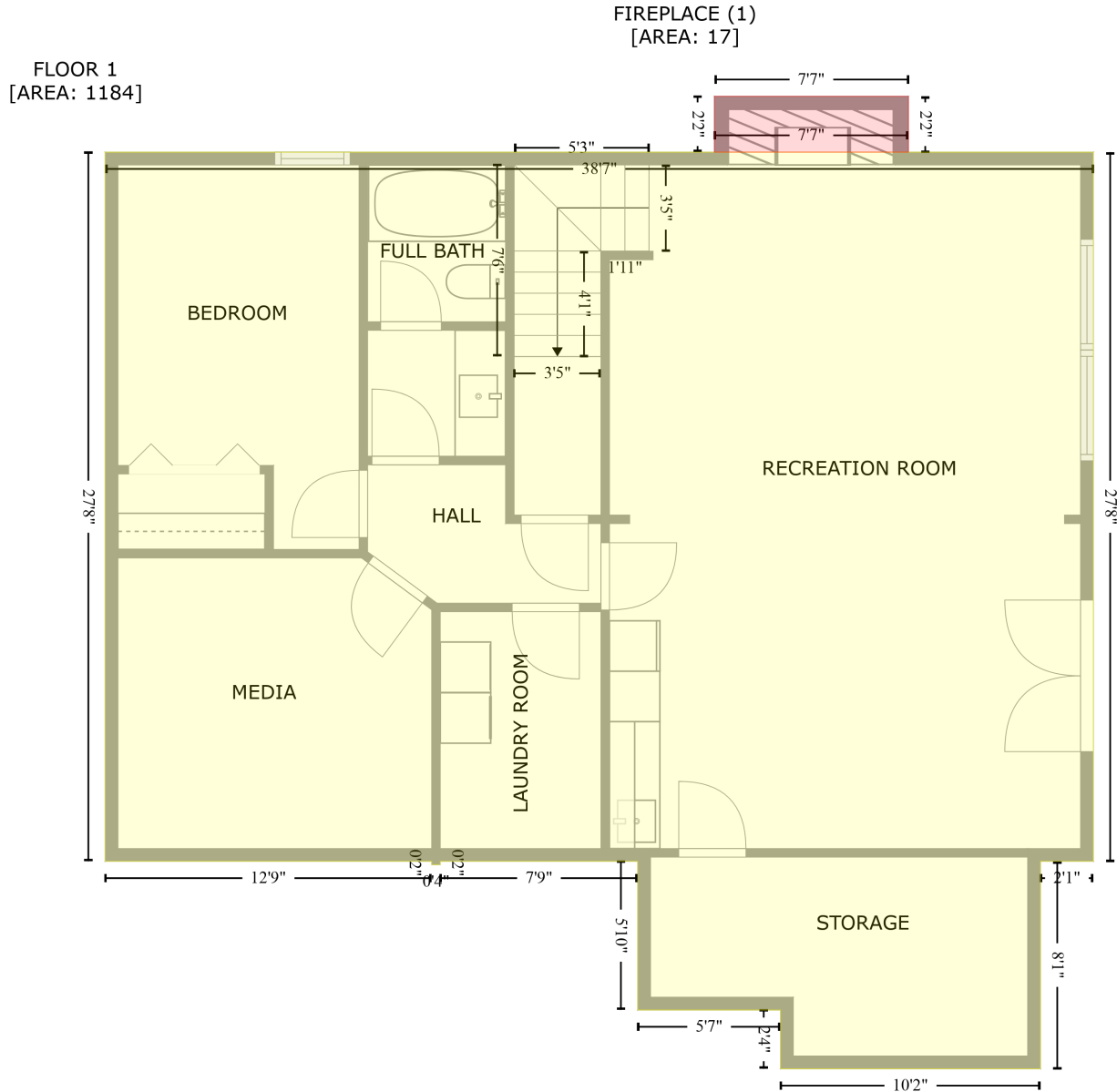


59D0B848-710E-4950-B24D-738EE5E24D03

Gross Living Area: 2205 sq. ft



Space	Area (sq. ft)	Calculation <small>Coordinate Polygon Area Algorithm using inches</small>
FLOOR 1 (Living area)	1184	$ \begin{aligned} & -((544.3 + 544.3) * (2.5 - 334.9) + (544.3 + 519.5) * (334.9 - 334.9) + (519.5 + 519.5) * (334.9 - \\ & 432.2) + (519.5 + 397.6) * (432.2 - 432.2) + (397.6 + 397.6) * (432.2 - 404.6) + (397.6 + 330.7) * \\ & (404.6 - 404.6) + (330.7 + 330.7) * (404.6 - 334.9) + (330.7 + 238.2) * (334.9 - 334.9) + (238.2 + \\ & 238.2) * (334.9 - 336.5) + (238.2 + 234.2) * (336.5 - 336.5) + (234.2 + 234.2) * (336.5 - 334.9) + \\ & (234.2 + 81.1) * (334.9 - 334.9) + (81.1 + 81.1) * (334.9 - 2.5) + (81.1 + 544.3) * (2.5 - 2.5) * 0.5 * \\ & 0.00694 \end{aligned} $

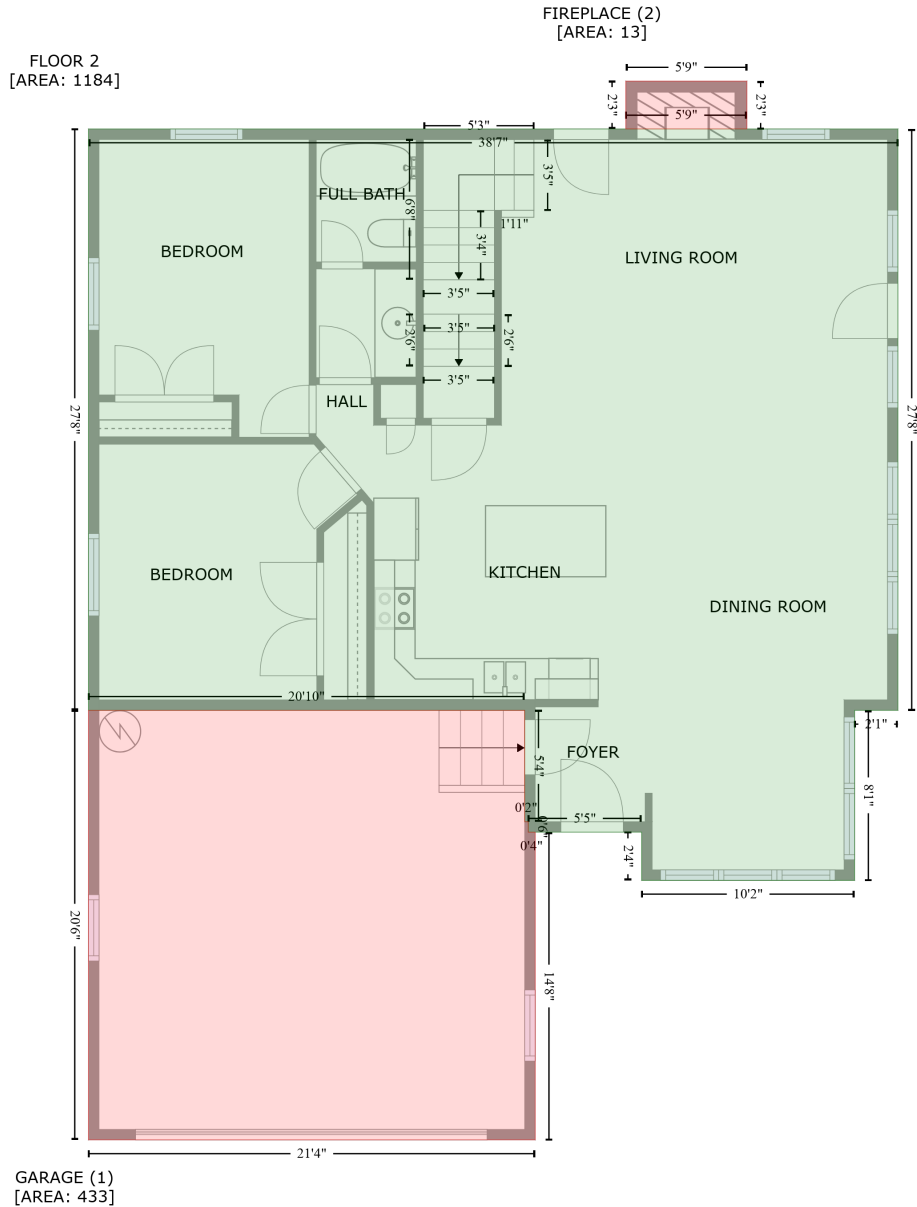
59D0B848-710E-4950-B24D-738EE5E24D03

Gross Living Area: 2205 sq. ft

Space	Area (sq. ft)	Calculation <small>Coordinate Polygon Area Algorithm using inches</small>
FIREPLACE (Non-living area)	17	$-((457.6 + 457.6) * (-23.7 - 2.5) + (457.6 + 366.6) * (2.5 - 2.5) + (366.6 + 366.6) * (2.5 - -23.7) + (366.6 + 457.6) * (-23.7 - -23.7)) * 0.5 * 0.00694$

59D0B848-710E-4950-B24D-738EE5E24D03

Gross Living Area: 2205 sq. ft



Space	Area (sq. ft)	Calculation <small>Coordinate Polygon Area Algorithm using inches</small>
FLOOR 2 (Living area)	1184	$-((542.4 + 542.4) * (4.4 - 336.9) + (542.4 + 517.6) * (336.9 - 336.9) + (517.6 + 517.6) * (336.9 - 434.1) + (517.6 + 395.7) * (434.1 - 434.1) + (395.7 + 395.7) * (434.1 - 406.5) + (395.7 + 330.8) * (406.5 - 406.5) + (330.8 + 330.8) * (406.5 - 400.5) + (330.8 + 328.8) * (400.5 - 400.5) + (328.8 + 328.8) * (400.5 - 336.9) + (328.8 + 79.2) * (336.9 - 336.9) + (79.2 + 79.2) * (336.9 - 4.4) + (79.2 + 542.4) * (4.4 - 4.4)) * 0.5 + 0.00694$
GARAGE	433	$-((328.8 + 328.8) * (336.9 - 400.5) + (328.8 + 330.8) * (400.5 - 400.5) + (330.8 + 330.8) * (400.5 -$

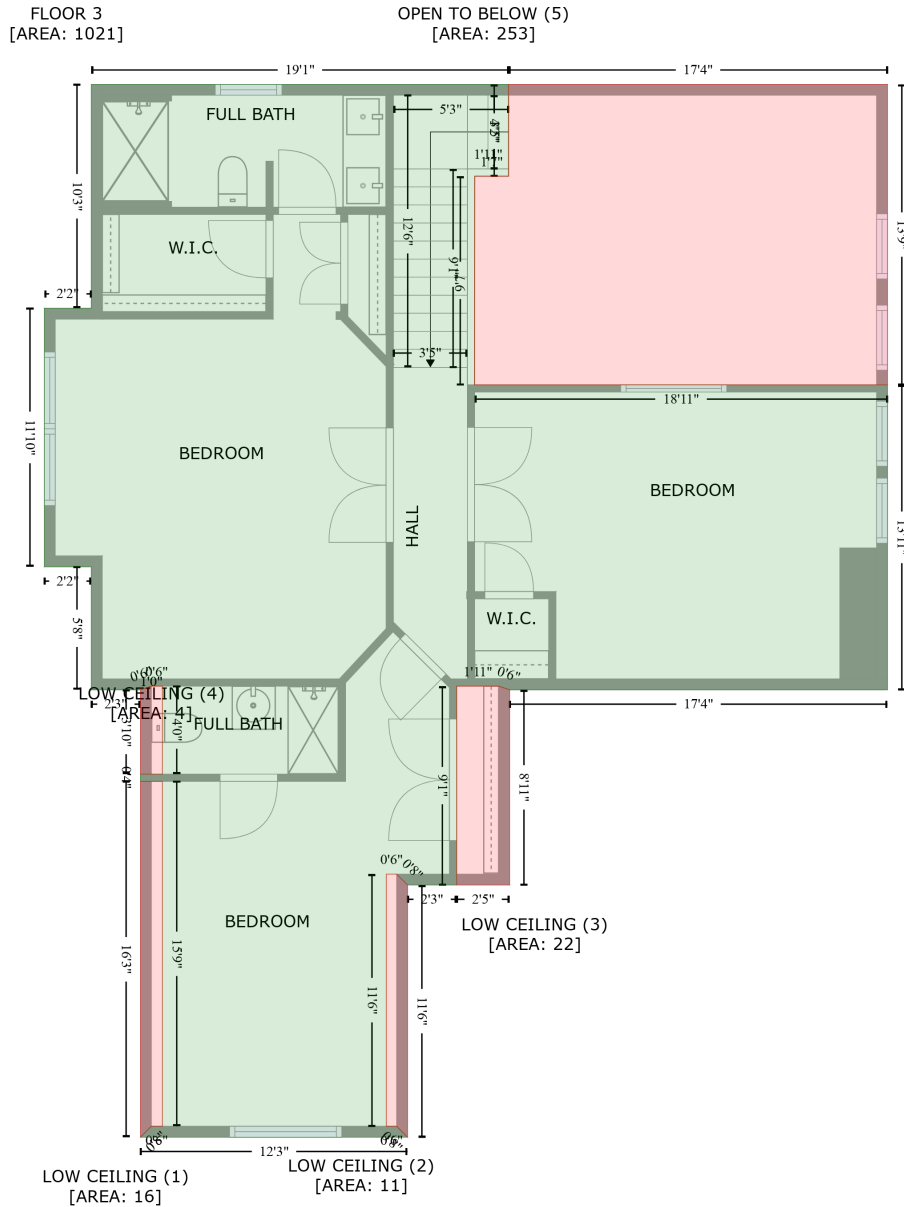
59D0B848-710E-4950-B24D-738EE5E24D03

Gross Living Area: 2205 sq. ft

Space	Area (sq. ft)	Calculation <small>Coordinate Polygon Area Algorithm using inches</small>
(Non-living area)		$406.5 + (330.8 + 334.8) * (406.5 - 406.5) + (334.8 + 334.8) * (406.5 - 582.5) + (334.8 + 79.2) * (582.5 - 582.5) + (79.2 + 79.2) * (582.5 - 336.9) + (79.2 + 328.8) * (336.9 - 336.9) * 0.5 * 0.00694$
FIREPLACE (Non-living area)	13	$-((455.9 + 455.9) * (-23 - 4.4) + (455.9 + 386.6) * (4.4 - 4.4) + (386.6 + 386.6) * (4.4 - -23) + (386.6 + 455.9) * (-23 - -23)) * 0.5 * 0.00694$

59D0B848-710E-4950-B24D-738EE5E24D03

Gross Living Area: 2205 sq. ft



Space	Area (sq. ft)	Calculation
FLOOR 3 (Living area)	1021	Coordinate Polygon Area Algorithm using inches $-((315.7 + 315.7) * (22.8 - 73.3) + (315.7 + 297.1) * (73.3 - 73.3) + (297.1 + 297) * (73.3 - 187.8) + (297 + 523.8) * (187.8 - 187.8) + (523.8 + 523.8) * (187.8 - 355.3) + (523.8 + 316.2) * (355.3 - 355.3) + (316.2 + 310.2) * (355.3 - 353.3) + (310.2 + 287.2) * (353.3 - 353.3) + (287.2 + 287.2) * (353.3 - 462.5) + (287.2 + 260.2) * (462.5 - 462.5) + (260.2 + 254.2) * (462.5 - 456.5) + (254.2 + 248.5) * (456.5 - 456.5) + (248.5 + 248.5) * (456.5 - 595) + (248.5 + 254.2) * (595 - 595) + (254.2 + 260.2) * (595 - 601) + (260.2 + 113.5) * (601 - 601) + (113.5 + 119.5) * (601 - 595) + (119.5 + 125.5) * (595 - 595) + (125.5 + 125.5) * (595 - 405.6) + (125.5 + 113.5) * (405.6 - 405.6) + (113.5$

59D0B848-710E-4950-B24D-738EE5E24D03

Gross Living Area: 2205 sq. ft

Space	Area (sq. ft)	Calculation <small>Coordinate Polygon Area Algorithm using inches</small>
		$+ 113.5) * (405.6 - 401.6) + (113.5 + 125.5) * (401.6 - 401.6) + (125.5 + 125.5) * (401.6 - 353.3) + (125.5 + 119.5) * (353.3 - 353.3) + (119.5 + 113.5) * (353.3 - 355.3) + (113.5 + 86.5) * (355.3 - 355.3) + (86.5 + 86.5) * (355.3 - 287.8) + (86.5 + 60.6) * (287.8 - 287.8) + (60.6 + 60.6) * (287.8 - 145.8) + (60.6 + 86.5) * (145.8 - 145.8) + (86.5 + 86.5) * (145.8 - 22.8) + (86.5 + 315.7) * (22.8 - 22.8) * 0.5 * 0.00694$
LOW CEILING (Non-living area)	16	$-((125.5 + 125.5) * (405.6 - 595) + (125.5 + 119.5) * (595 - 595) + (119.5 + 113.5) * (595 - 601) + (113.5 + 113.5) * (601 - 405.6) + (113.5 + 125.5) * (405.6 - 405.6)) * 0.5 * 0.00694$
LOW CEILING (Non-living area)	11	$-((254.2 + 260.2) * (456.5 - 462.5) + (260.2 + 260.2) * (462.5 - 601) + (260.2 + 254.2) * (601 - 595) + (254.2 + 248.5) * (595 - 595) + (248.5 + 248.5) * (595 - 456.5) + (248.5 + 254.2) * (456.5 - 456.5)) * 0.5 * 0.00694$
LOW CEILING (Non-living area)	22	$-((310.2 + 316.2) * (353.3 - 355.3) + (316.2 + 316.2) * (355.3 - 462.5) + (316.2 + 287.2) * (462.5 - 462.5) + (287.2 + 287.2) * (462.5 - 353.3) + (287.2 + 310.2) * (353.3 - 353.3)) * 0.5 * 0.00694$
LOW CEILING (Non-living area)	4	$-((125.5 + 125.5) * (353.3 - 401.6) + (125.5 + 113.5) * (401.6 - 401.6) + (113.5 + 113.5) * (401.6 - 355.3) + (113.5 + 119.5) * (355.3 - 353.3) + (119.5 + 125.5) * (353.3 - 353.3)) * 0.5 * 0.00694$
OPEN TO BELOW (Non-living area)	253	$-((523.8 + 523.8) * (22.8 - 187.8) + (523.8 + 297) * (187.8 - 187.8) + (297 + 297.1) * (187.8 - 73.3) + (297.1 + 315.7) * (73.3 - 73.3) + (315.7 + 315.7) * (73.3 - 22.8) + (315.7 + 523.8) * (22.8 - 22.8)) * 0.5 * 0.00694$