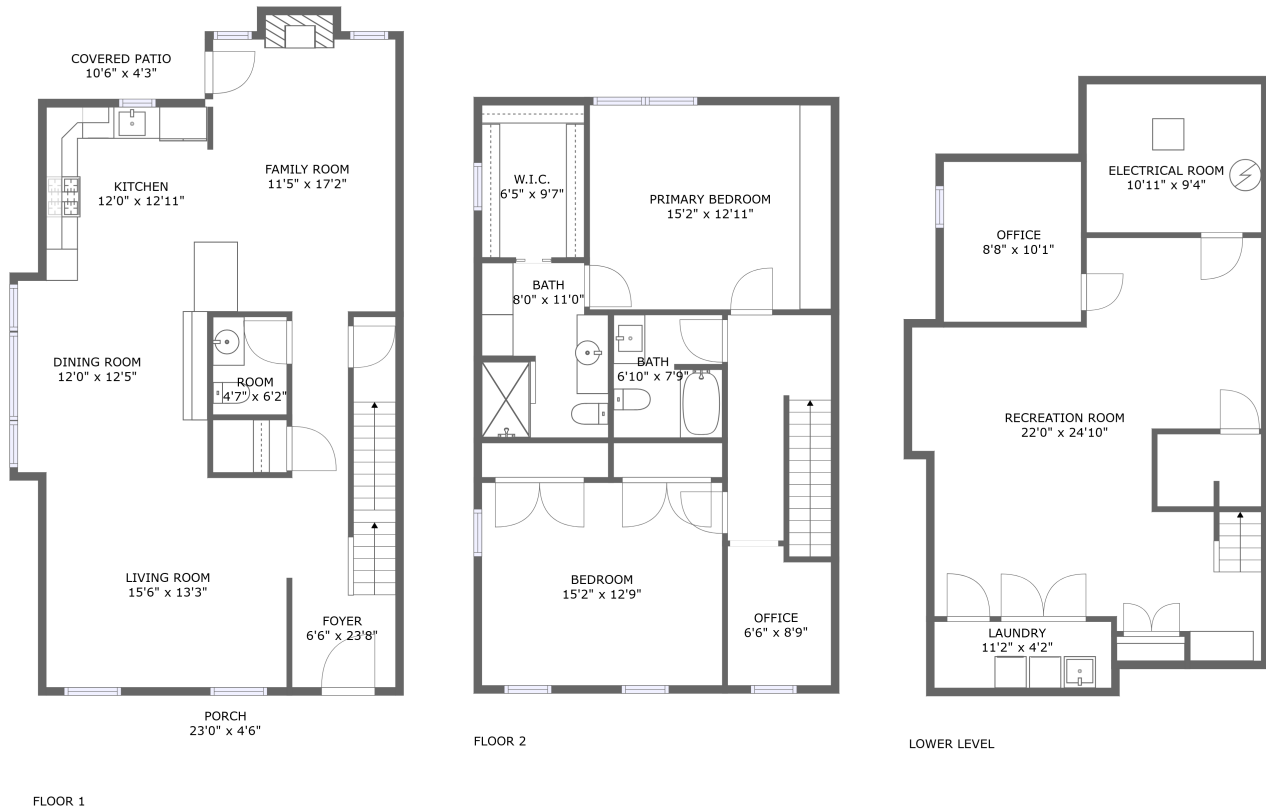


19 Wexford Drive, Mendham, Morris County, New Jersey, United States, 07945

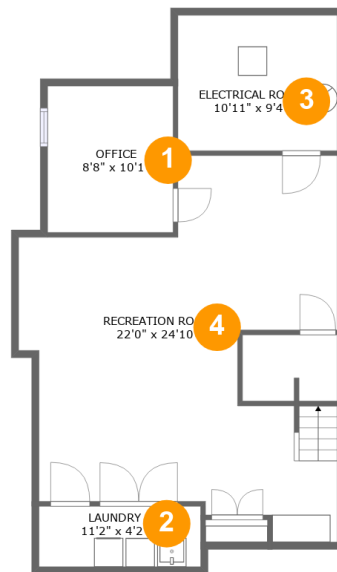


Property summary

0 Garages **2** Bedrooms **2** Bathrooms **1** Half baths

3 Floors **2,401** Gross living area sqft **2,718** Total sqft

19 Wexford Drive, Mendham, Morris County, New Jersey, United States, 07945



Room dimensions

Floor 1

Total sqft: 775 Living area: 607

#		Dimensions	sqft	Counted as living area
1	Office	8'8" x 10'1"	88 sq. ft	Yes
2	Laundry	11'2" x 4'2"	47 sq. ft	No
3	Electrical Room	10'11" x 9'4"	103 sq. ft	No
4	Recreation Room	22'0" x 24'10"	429 sq. ft	Yes

19 Wexford Drive, Mendham, Morris County, New Jersey, United States, 07945



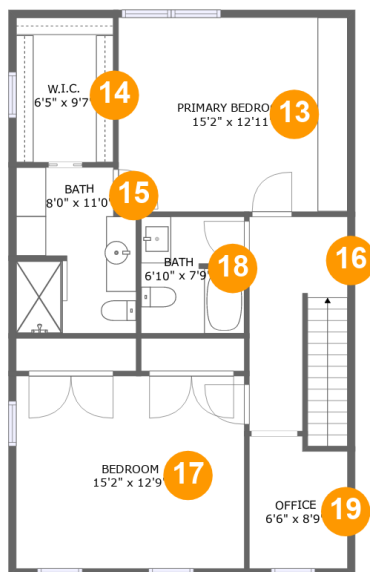
Room dimensions

Floor 2

Total sqft: 1088 Living area: 939

#		Dimensions	sqft	Counted as living area
5	Foyer	6'6" x 23'8"	149 sq. ft	Yes
6	Family Room	11'5" x 17'2"	197 sq. ft	Yes
7	Room	4'7" x 6'2"	29 sq. ft	Yes
8	Covered Patio	10'6" x 4'3"	45 sq. ft	No
9	Kitchen	12'0" x 12'11"	123 sq. ft	Yes
10	Porch	23'0" x 4'6"	104 sq. ft	No
11	Living Room	15'6" x 13'3"	202 sq. ft	Yes
12	Dining Room	12'0" x 12'5"	147 sq. ft	Yes

19 Wexford Drive, Mendham, Morris County, New Jersey, United States, 07945



Room dimensions

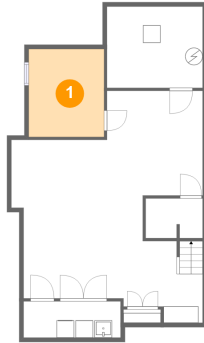
Floor 3

Total sqft: 855 Living area: 855

#		Dimensions	sqft	Counted as living area
13	Primary Bedroom	15'2" x 12'11"	196 sq. ft	Yes
14	W.I.C.	6'5" x 9'7"	62 sq. ft	Yes
15	Bath	8'0" x 11'0"	82 sq. ft	Yes
16	Hall	6'6" x 14'3"	92 sq. ft	Yes
17	Bedroom	15'2" x 12'9"	194 sq. ft	Yes
18	Bath	6'10" x 7'9"	52 sq. ft	Yes
19	Office	6'6" x 8'9"	54 sq. ft	Yes

19 Wexford Drive, Mendham, Morris County, New Jersey, United States, 07945

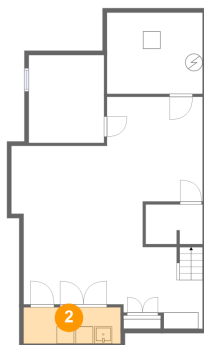
1 Floor 1 - Office



Dimensions: 8'8" x 10'1"
Area: 88 sq. ft
Counted as living area: Yes

Heated: Yes
Finished: Yes
Enclosed: Yes
Contiguous: Yes
Permitted: Yes
Wet space: No
Addition: No
Conversion: No

2 Floor 1 - Laundry

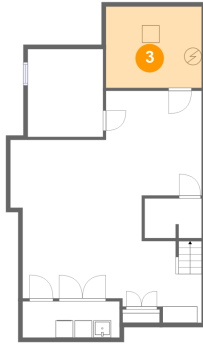


Dimensions: 11'2" x 4'2"
Area: 47 sq. ft
Counted as living area: No

Heated: Yes
Finished: No
Enclosed: Yes
Contiguous: Yes
Permitted: Yes
Wet space: No
Addition: No
Conversion: No

19 Wexford Drive, Mendham, Morris County, New Jersey, United States, 07945

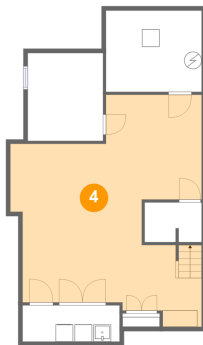
3 Floor 1 - Electrical Room



Dimensions: 10'11" x 9'4"
Area: 103 sq. ft
Counted as living area: No

Heated: No
Finished: No
Enclosed: Yes
Contiguous: Yes
Permitted: Yes
Wet space: No
Addition: No
Conversion: No

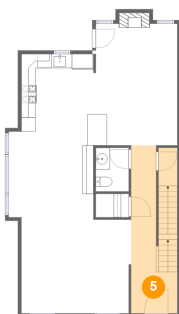
4 Floor 1 - Recreation Room



Dimensions: 22'0" x 24'10"
Area: 429 sq. ft
Counted as living area: Yes

Heated: Yes
Finished: Yes
Enclosed: Yes
Contiguous: Yes
Permitted: Yes
Wet space: No
Addition: No
Conversion: No

5 Floor 2 - Foyer



Dimensions: 6'6" x 23'8"
Area: 149 sq. ft
Counted as living area: Yes

Heated: Yes
Finished: Yes
Enclosed: Yes
Contiguous: Yes
Permitted: Yes
Wet space: No
Addition: No
Conversion: No

19 Wexford Drive, Mendham, Morris County, New Jersey, United States, 07945

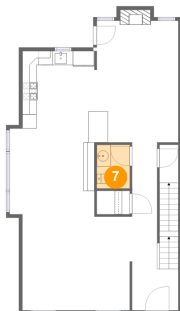
6 Floor 2 - Family Room



Dimensions: 11'5" x 17'2"
Area: 197 sq. ft
Counted as living area: Yes

Heated: Yes
Finished: Yes
Enclosed: Yes
Contiguous: Yes
Permitted: Yes
Wet space: No
Addition: No
Conversion: No

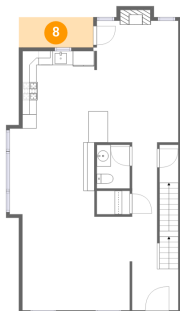
7 Floor 2 - Room



Dimensions: 4'7" x 6'2"
Area: 29 sq. ft
Counted as living area: Yes

Heated: Yes
Finished: Yes
Enclosed: Yes
Contiguous: Yes
Permitted: Yes
Wet space: No
Addition: No
Conversion: No

8 Floor 2 - Covered Patio



Dimensions: 10'6" x 4'3"
Area: 45 sq. ft
Counted as living area: No

Heated: No
Finished: Yes
Enclosed: No
Contiguous: Yes
Permitted: Yes
Wet space: No
Addition: No
Conversion: No

19 Wexford Drive, Mendham, Morris County, New Jersey, United States, 07945

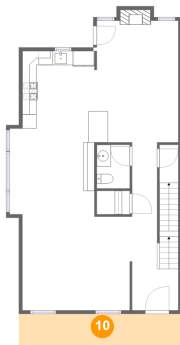
9 Floor 2 - Kitchen



Dimensions: 12'0" x 12'11"
Area: 123 sq. ft
Counted as living area: Yes

Heated: Yes
Finished: Yes
Enclosed: Yes
Contiguous: Yes
Permitted: Yes
Wet space: No
Addition: No
Conversion: No

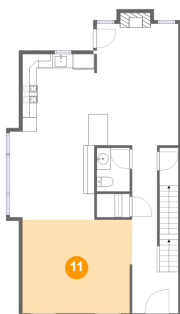
10 Floor 2 - Porch



Dimensions: 23'0" x 4'6"
Area: 104 sq. ft
Counted as living area: No

Heated: No
Finished: Yes
Enclosed: No
Contiguous: Yes
Permitted: Yes
Wet space: No
Addition: No
Conversion: No

11 Floor 2 - Living Room

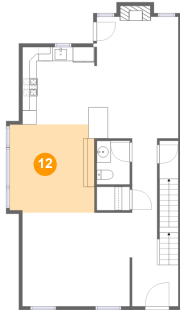


Dimensions: 15'6" x 13'3"
Area: 202 sq. ft
Counted as living area: Yes

Heated: Yes
Finished: Yes
Enclosed: Yes
Contiguous: Yes
Permitted: Yes
Wet space: No
Addition: No
Conversion: No

19 Wexford Drive, Mendham, Morris County, New Jersey, United States, 07945

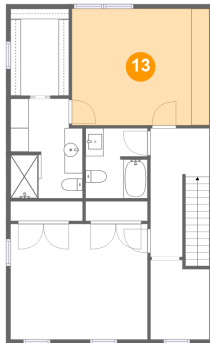
12 Floor 2 - Dining Room



Dimensions: 12'0" x 12'5"
Area: 147 sq. ft
Counted as living area: Yes

Heated: Yes
Finished: Yes
Enclosed: Yes
Contiguous: Yes
Permitted: Yes
Wet space: No
Addition: No
Conversion: No

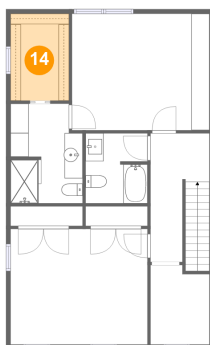
13 Floor 3 - Primary Bedroom



Dimensions: 15'2" x 12'11"
Area: 196 sq. ft
Counted as living area: Yes

Heated: Yes
Finished: Yes
Enclosed: Yes
Contiguous: Yes
Permitted: Yes
Wet space: No
Addition: No
Conversion: No

14 Floor 3 - W.I.C.

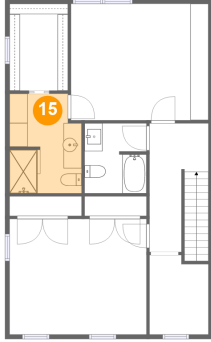


Dimensions: 6'5" x 9'7"
Area: 62 sq. ft
Counted as living area: Yes

Heated: Yes
Finished: Yes
Enclosed: Yes
Contiguous: Yes
Permitted: Yes
Wet space: No
Addition: No
Conversion: No

19 Wexford Drive, Mendham, Morris County, New Jersey, United States, 07945

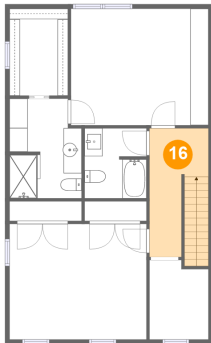
15 Floor 3 - Bath



Dimensions: 8'0" x 11'0"
Area: 82 sq. ft
Counted as living area: Yes

Heated: Yes
Finished: Yes
Enclosed: Yes
Contiguous: Yes
Permitted: Yes
Wet space: Yes
Addition: No
Conversion: No

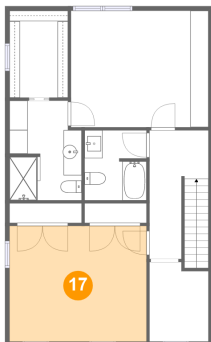
16 Floor 3 - Hall



Dimensions: 6'6" x 14'3"
Area: 92 sq. ft
Counted as living area: Yes

Heated: Yes
Finished: Yes
Enclosed: Yes
Contiguous: Yes
Permitted: Yes
Wet space: No
Addition: No
Conversion: No

17 Floor 3 - Bedroom

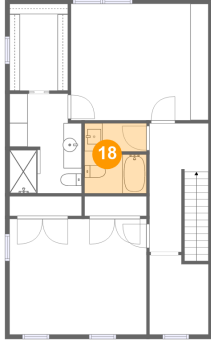


Dimensions: 15'2" x 12'9"
Area: 194 sq. ft
Counted as living area: Yes

Heated: Yes
Finished: Yes
Enclosed: Yes
Contiguous: Yes
Permitted: Yes
Wet space: No
Addition: No
Conversion: No

19 Wexford Drive, Mendham, Morris County, New Jersey, United States, 07945

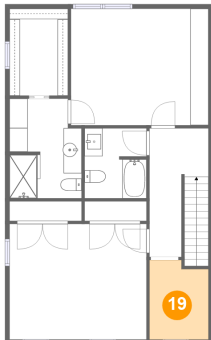
18 Floor 3 - Bath



Dimensions: 6'10" x 7'9"
Area: 52 sq. ft
Counted as living area: Yes

Heated: Yes
Finished: Yes
Enclosed: Yes
Contiguous: Yes
Permitted: Yes
Wet space: Yes
Addition: No
Conversion: No

19 Floor 3 - Office



Dimensions: 6'6" x 8'9"
Area: 54 sq. ft
Counted as living area: Yes

Heated: Yes
Finished: Yes
Enclosed: Yes
Contiguous: Yes
Permitted: Yes
Wet space: No
Addition: No
Conversion: No