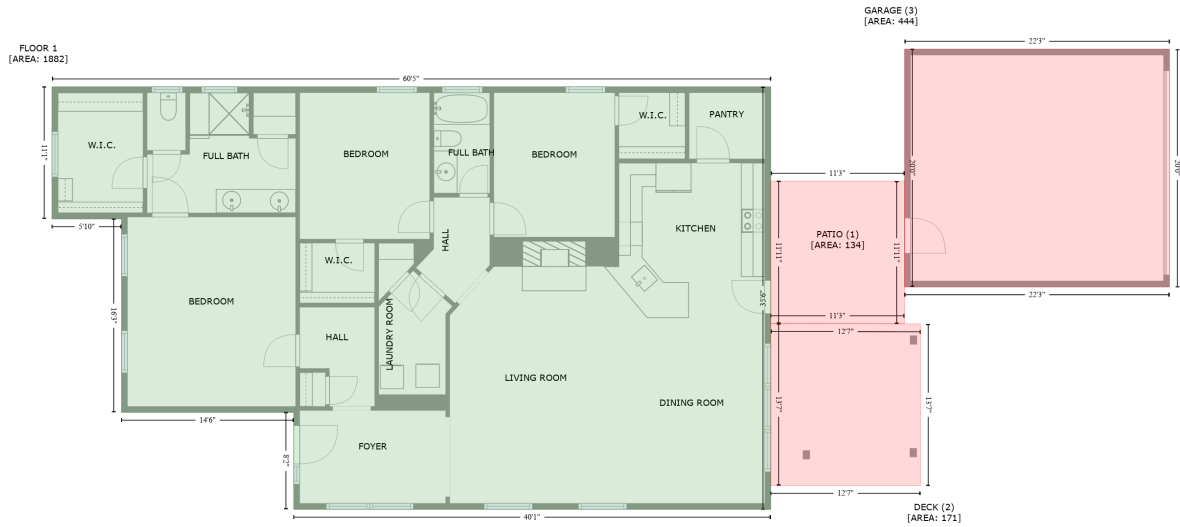


# 357 Montibello Drive, Mooresville, Iredell County, North Carolina, United States, 28117

Gross Living Area: 1882 sq. ft



Space	Area (sq. ft)	Calculation
FLOOR 1 (Living area)	1882	Coordinate Polygon Area Algorithm using inches $-((453.5 + 453.5) * (307.2 - 732.9) + (453.5 + -27.4) * (732.9 - 732.9) + (-27.4 + -27.4) * (732.9 - 635.2) + (-27.4 + -201) * (635.2 - 635.2) + (-201 + -201) * (635.2 - 440.3) + (-201 + -271.1) * (440.3 - 440.3) + (-271.1 + -271.1) * (440.3 - 307.2) + (-271.1 + 453.5) * (307.2 - 307.2)) * 0.5 * 0.00694$
PATIO (Non-living area)	134	$-((588.3 + 588.3) * (402.3 - 545.8) + (588.3 + 453.5) * (545.8 - 545.8) + (453.5 + 453.5) * (545.8 - 402.3) + (453.5 + 588.3) * (402.3 - 402.3)) * 0.5 * 0.00694$
DECK (Non-living area)	171	$-((453.5 + 604.3) * (545.8 - 546.1) + (604.3 + 604.3) * (546.1 - 708.8) + (604.3 + 453.5) * (708.8 - 708.8) + (453.5 + 453.5) * (708.8 - 545.8)) * 0.5 * 0.00694$
GARAGE (Non-living area)	444	$-((855.4 + 855.4) * (269.3 - 508.8) + (855.4 + 588.3) * (508.8 - 508.8) + (588.3 + 588.3) * (508.8 - 269.3) + (588.3 + 855.4) * (269.3 - 269.3)) * 0.5 * 0.00694$