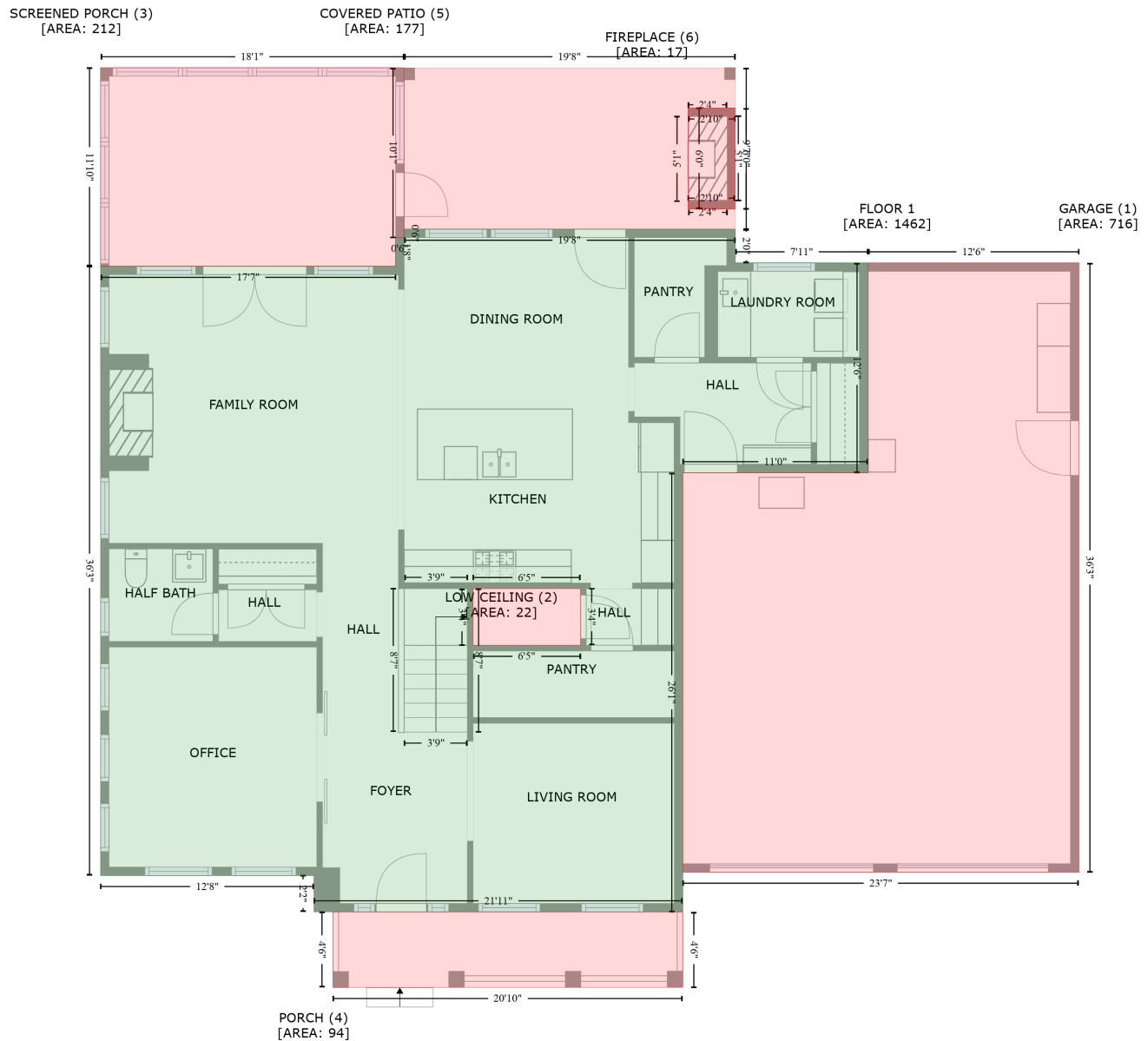


# 2018 Masons Bend Drive, Fort Mill, York County, South Carolina, United States, 29708

Gross Living Area: 3123 sq. ft



Space	Area (sq. ft)	Calculation
FLOOR 1 (Living area)	1462	Coordinate Polygon Area Algorithm using inches $-((469 + 469) * (200.5 - 224.5) + (469 + 563.8) * (224.5 - 224.5) + (563.8 + 563.8) * (224.5 - 374.3) + (563.8 + 431.6) * (374.3 - 374.3) + (431.6 + 431.6) * (374.3 - 687.7) + (431.6 + 168.4) * (687.7 - 687.7) + (168.4 + 168.4) * (687.7 - 661.7) + (168.4 + 16) * (661.7 - 661.7) + (16 + 16) * (661.7 - 226.9) + (16 + 226.6) * (226.9 - 226.9) + (226.6 + 226.6) * (226.9 - 206.5) + (226.6 + 232.6) * (206.5 - 206.5) + (232.6 + 232.6) * (206.5 - 200.5) + (232.6 + 469) * (200.5 - 200.5)) * 0.5 * 0.00694 + -((358.6 + 281.8) * (456.9 - 456.9) + (281.8 + 281.8) * (456.9 - 497.4) + (281.8 + 358.6) * (497.4 - 497.4) + (358.6 + 358.6) * (497.4 - 456.9)) * 0.5 * 0.00694$

# 2018 Masons Bend Drive, Fort Mill, York County, South Carolina, United States, 29708

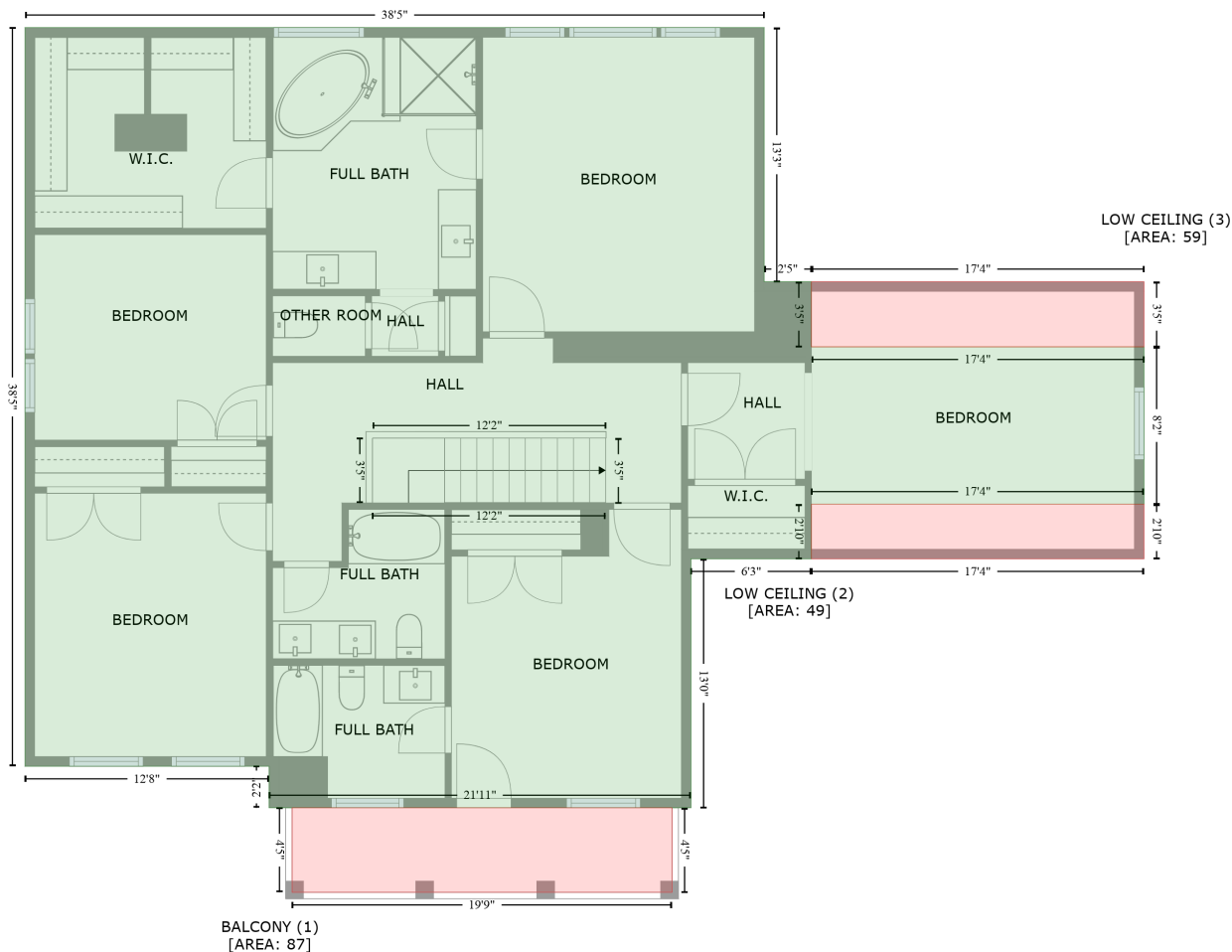
Gross Living Area: 3123 sq. ft

Space	Area (sq. ft)	Calculation <small>Coordinate Polygon Area Algorithm using inches</small>
GARAGE (Non-living area)	716	$-\left((714.2 + 714.2) * (224.5 - 659.3) + (714.2 + 431.6) * (659.3 - 659.3) + (431.6 + 431.6) * (659.3 - 374.3) + (431.6 + 563.8) * (374.3 - 374.3) + (563.8 + 563.8) * (374.3 - 224.5) + (563.8 + 714.2) * (224.5 - 224.5)\right) * 0.5 * 0.00694$
LOW CEILING (Non-living area)	22	$-\left((358.6 + 358.6) * (456.9 - 497.4) + (358.6 + 281.8) * (497.4 - 497.4) + (281.8 + 281.8) * (497.4 - 456.9) + (281.8 + 358.6) * (456.9 - 456.9)\right) * 0.5 * 0.00694$
SCREENED PORCH (Non-living area)	212	$-\left((232.6 + 232.6) * (85.2 - 206.5) + (232.6 + 226.6) * (206.5 - 206.5) + (226.6 + 226.6) * (206.5 - 226.9) + (226.6 + 16) * (226.9 - 226.9) + (16 + 16) * (226.9 - 85.2) + (16 + 232.6) * (85.2 - 85.2)\right) * 0.5 * 0.00694$
PORCH (Non-living area)	94	$-\left((431.6 + 431.6) * (687.7 - 741.6) + (431.6 + 181.9) * (741.6 - 741.6) + (181.9 + 181.9) * (741.6 - 687.7) + (181.9 + 431.6) * (687.7 - 687.7)\right) * 0.5 * 0.00694$
COVERED PATIO (Non-living area)	177	$-\left((469 + 469) * (85.2 - 200.5) + (469 + 232.6) * (200.5 - 200.5) + (232.6 + 232.6) * (200.5 - 85.2) + (232.6 + 469) * (85.2 - 85.2)\right) * 0.5 * 0.00694 + -\left((463.3 + 435.3) * (119.5 - 119.5) + (435.3 + 435.3) * (119.5 - 180.6) + (435.3 + 463.3) * (180.6 - 180.5) + (463.3 + 463.3) * (180.5 - 119.5)\right) * 0.5 * 0.00694$
FIREPLACE (Non-living area)	17	$-\left((468.9 + 468.9) * (113.9 - 186.1) + (468.9 + 435.3) * (186.1 - 186.1) + (435.3 + 435.3) * (186.1 - 113.9) + (435.3 + 468.9) * (113.9 - 113.9)\right) * 0.5 * 0.00694$

# 2018 Masons Bend Drive, Fort Mill, York County, South Carolina, United States, 29708

Gross Living Area: 3123 sq. ft

FLOOR 2  
[AREA: 1661]



Space	Area (sq. ft)	Calculation
FLOOR 2 (Living area)	1661	Coordinate Polygon Area Algorithm using inches $-\left((477.3 + 477.3) * (200.4 - 359) + (477.3 + 506.8) * (359 - 359) + (506.8 + 506.8) * (359 - 399.7) + (506.8 + 714.3) * (399.7 - 399.7) + (714.3 + 714.3) * (399.7 - 498) + (714.3 + 506.8) * (498 - 498) + (506.8 + 506.8) * (498 - 532.1) + (506.8 + 431.6) * (532.1 - 532.1) + (431.6 + 431.6) * (532.1 - 687.6) + (431.6 + 168.4) * (687.6 - 687.6) + (168.4 + 168.4) * (687.6 - 661.6) + (168.4 + 16.1) * (661.6 - 661.6) + (16.1 + 16.1) * (661.6 - 200.4) + (16.1 + 477.3) * (200.4 - 200.4)\right) * 0.5 * 0.00694$
BALCONY (Non-living area)	87	$-\left((419.8 + 419.8) * (687.6 - 740.3) + (419.8 + 182.8) * (740.3 - 740.3) + (182.8 + 182.8) * (740.3 - 687.6) + (182.8 + 419.8) * (687.6 - 687.6)\right) * 0.5 * 0.00694$
LOW CEILING (Non-living area)	49	$-\left((714.3 + 714.3) * (498 - 532.1) + (714.3 + 506.8) * (532.1 - 532.1) + (506.8 + 506.8) * (532.1 - 498) + (506.8 + 714.3) * (498 - 498)\right) * 0.5 * 0.00694$
LOW CEILING (Non-living area)	59	$-\left((714.3 + 714.3) * (359 - 399.7) + (714.3 + 506.8) * (399.7 - 399.7) + (506.8 + 506.8) * (399.7 - 359) + (506.8 + 714.3) * (359 - 359)\right) * 0.5 * 0.00694$