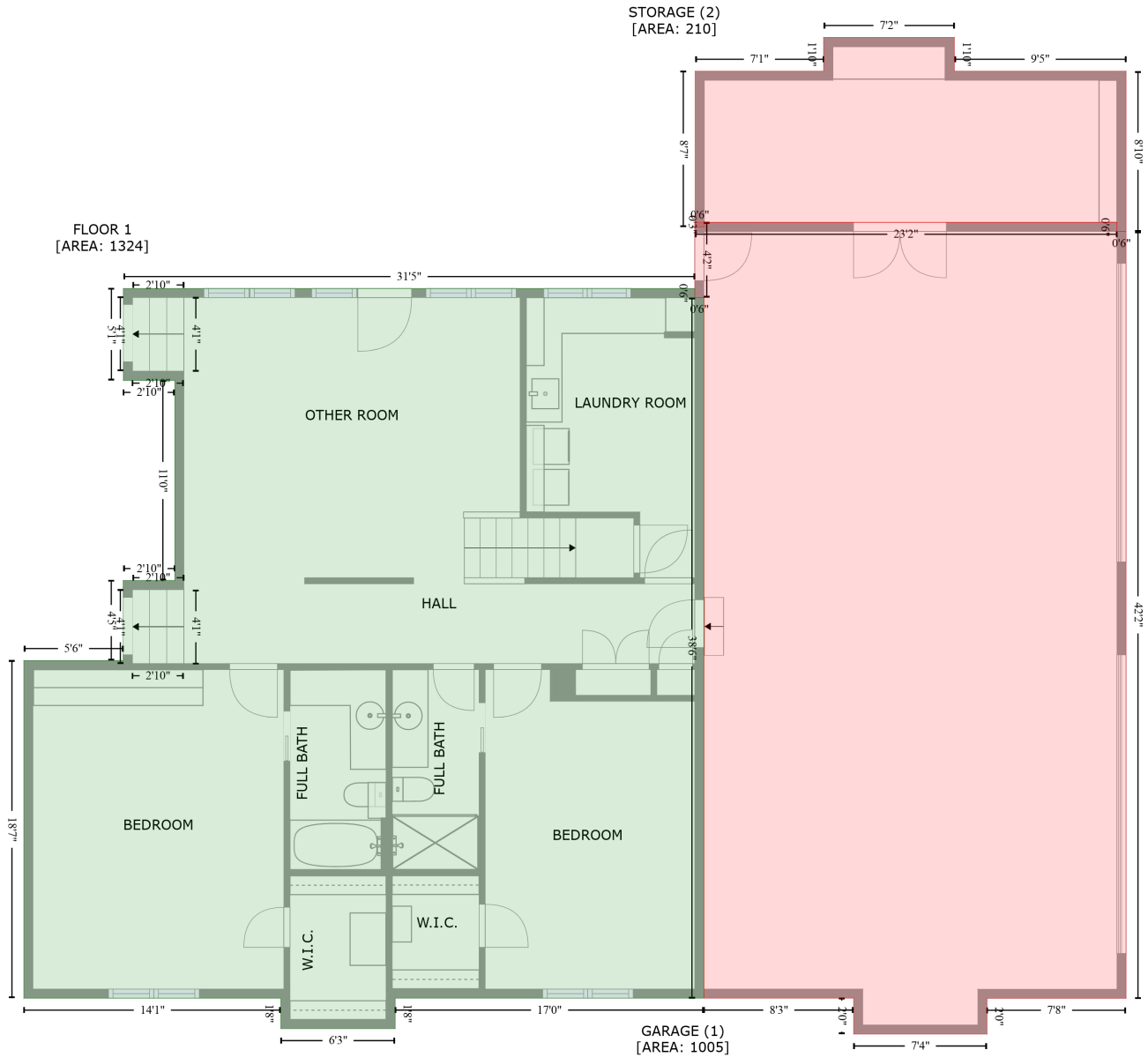


3200 River Heights, Benton, Arkansas 72019, United States

Gross Living Area: 4286 sq. ft



Space	Area (sq. ft)	Calculation
FLOOR 1 (Living area)	1324	Coordinate Polygon Area Algorithm using inches $-((1004.3 + 1004.3) * (159.4 - 165.4) + (1004.3 + 1010.3) * (165.4 - 165.4) + (1010.3 + 1010.3) * (165.4 - 627.2) + (1010.3 + 806.8) * (627.2 - 627.2) + (806.8 + 806.8) * (627.2 - 647.3) + (806.8 + 731.4) * (647.3 - 647.3) + (731.4 + 731.4) * (647.3 - 627.2) + (731.4 + 562) * (627.2 - 627.2) + (562 + 562) * (627.2 - 404.6) + (562 + 627.5) * (404.6 - 404.6) + (627.5 + 627.5) * (404.6 - 351.9) + (627.5 + 661.5) * (351.9 - 351.9) + (661.5 + 661.5) * (351.9 - 220) + (661.5 + 627.6) * (220 - 220) + (627.6 + 627.6) * (220 - 159.4) + (627.6 + 1004.3) * (159.4 - 159.4)) * 0.5 * 0.00694$

3200 River Heights, Benton, Arkansas 72019, United States

Gross Living Area: 4286 sq. ft

Space	Area (sq. ft)	Calculation <small>Coordinate Polygon Area Algorithm using inches</small>
GARAGE (Non-living area)	1005	$-\left((1282.7 + 1282.7) * (115.7 - 121.7) + (1282.7 + 1288.7) * (121.7 - 121.7) + (1288.7 + 1288.7) * (121.7 - 627.4) + (1288.7 + 1197) * (627.4 - 627.4) + (1197 + 1197) * (627.4 - 650.9) + (1197 + 1109.1) * (650.9 - 650.9) + (1109.1 + 1109.1) * (650.9 - 627.2) + (1109.1 + 1010.3) * (627.2 - 627.2) + (1010.3 + 1010.3) * (627.2 - 165.4) + (1010.3 + 1004.3) * (165.4 - 165.4) + (1004.3 + 1004.3) * (165.4 - 115.7) + (1004.3 + 1282.7) * (115.7 - 115.7)\right) * 0.5 * 0.00694$
STORAGE (Non-living area)	210	$-\left((1175.5 + 1175.5) * (-6.2 - 16.1) + (1175.5 + 1288.7) * (16.1 - 16.1) + (1288.7 + 1288.7) * (16.1 - 121.7) + (1288.7 + 1282.7) * (121.7 - 121.7) + (1282.7 + 1282.7) * (121.7 - 115.7) + (1282.7 + 1010.6) * (115.7 - 115.7) + (1010.6 + 1010.6) * (115.7 - 118.9) + (1010.6 + 1004.6) * (118.9 - 118.9) + (1004.6 + 1004.6) * (118.9 - 16.1) + (1004.6 + 1089.3) * (16.1 - 16.1) + (1089.3 + 1089.3) * (16.1 - -6.2) + (1089.3 + 1175.5) * (-6.2 - -6.2)\right) * 0.5 * 0.00694$

3200 River Heights, Benton, Arkansas 72019, United States

Gross Living Area: 4286 sq. ft

FLOOR 2
[AREA: 1341]



Space	Area (sq. ft)	Calculation <small>Coordinate Polygon Area Algorithm using inches</small>
FLOOR 2 (Living area)	1341	$-((633.6 + 633.6) * (62.9 - 159.4) + (633.6 + 667.5) * (159.4 - 159.4) + (667.5 + 667.5) * (159.4 - 410.6) + (667.5 + 568) * (410.6 - 410.6) + (568 + 568) * (410.6 - 627.3) + (568 + 412.1) * (627.3 - 627.3) + (412.1 + 412.1) * (627.3 - 500.9) + (412.1 + 299.9) * (500.9 - 500.9) + (299.9 + 299.9) * (500.9 - 415.8) + (299.9 + 259.6) * (415.8 - 415.8) + (259.6 + 259.6) * (415.8 - 359.7) + (259.6 + 224.3) * (359.7 - 359.7) + (224.3 + 224.3) * (359.7 - 62.9) + (224.3 + 633.6) * (62.9 - 62.9)) * 0.5 * 0.00694$

3200 River Heights, Benton, Arkansas 72019, United States

Gross Living Area: 4286 sq. ft

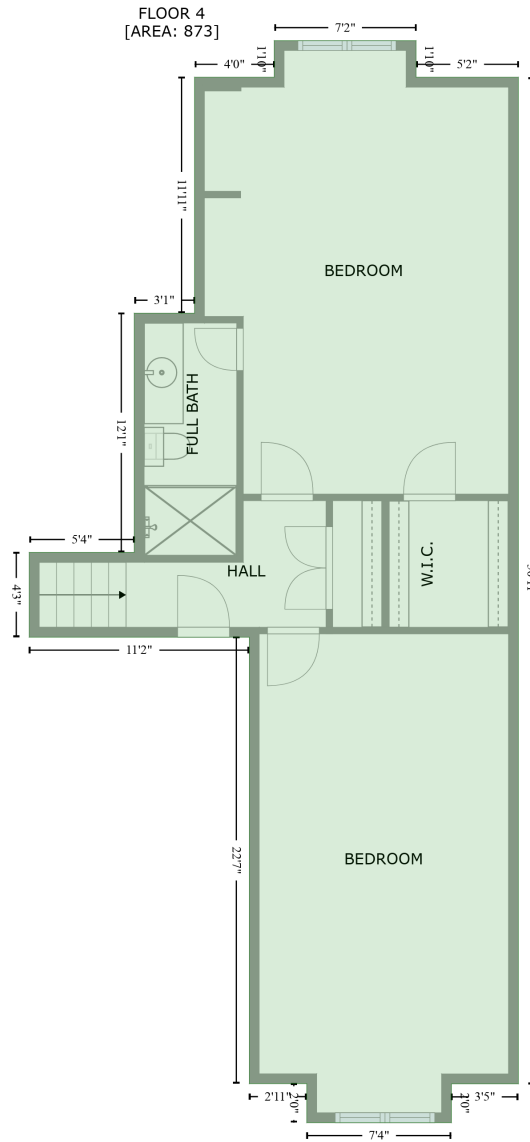
FLOOR 3
[AREA: 748]



Space	Area (sq. ft)	Calculation <small>Coordinate Polygon Area Algorithm using inches</small>
FLOOR 3 (Living area)	748	$ \begin{aligned} & -((230.3 + 230.3) * (203.8 - 354.2) + (230.3 + 305.9) * (354.2 - 354.2) + (305.9 + 305.9) * (354.2 - \\ & 568.4) + (305.9 + 230.3) * (568.4 - 568.4) + (230.3 + 230.3) * (568.4 - 597.3) + (230.3 + 198.9) * \\ & (597.3 - 597.3) + (198.9 + 198.9) * (597.3 - 611.7) + (198.9 + 115.1) * (611.7 - 611.7) + (115.1 + \\ & 115.1) * (611.7 - 597.3) + (115.1 + 71) * (597.3 - 597.3) + (71 + 71) * (597.3 - 568.4) + (71 + -5) * \\ & (568.4 - 568.4) + (-5 + -5) * (568.4 - 203.8) + (-5 + 230.3) * (203.8 - 203.8)) * 0.5 * 0.00694 \end{aligned} $

3200 River Heights, Benton, Arkansas 72019, United States

Gross Living Area: 4286 sq. ft



Space	Area (sq. ft)	Calculation <small>Coordinate Polygon Area Algorithm using inches</small>
FLOOR 4 (Living area)	873	$ \begin{aligned} & -((1175.5 + 1175.5) * (-6.2 - 16.1) + (1175.5 + 1237.6) * (16.1 - 16.1) + (1237.6 + 1237.6) * (16.1 - \\ & 627.4) + (1237.6 + 1197) * (627.4 - 627.4) + (1197 + 1197) * (627.4 - 650.9) + (1197 + 1109.1) * \\ & (650.9 - 650.9) + (1109.1 + 1109.1) * (650.9 - 627.2) + (1109.1 + 1074.2) * (627.2 - 627.2) + \\ & (1074.2 + 1074.2) * (627.2 - 356.1) + (1074.2 + 940.5) * (356.1 - 356.1) + (940.5 + 940.5) * \\ & (356.1 - 304.6) + (940.5 + 1004.3) * (304.6 - 304.6) + (1004.3 + 1004.3) * (304.6 - 159.4) + \\ & (1004.3 + 1040.9) * (159.4 - 159.4) + (1040.9 + 1040.9) * (159.4 - 16.1) + (1040.9 + 1089.3) * \\ & (16.1 - 16.1) + (1089.3 + 1089.3) * (16.1 - -6.2) + (1089.3 + 1175.5) * (-6.2 - -6.2)) * 0.5 * 0.00694 \end{aligned} $