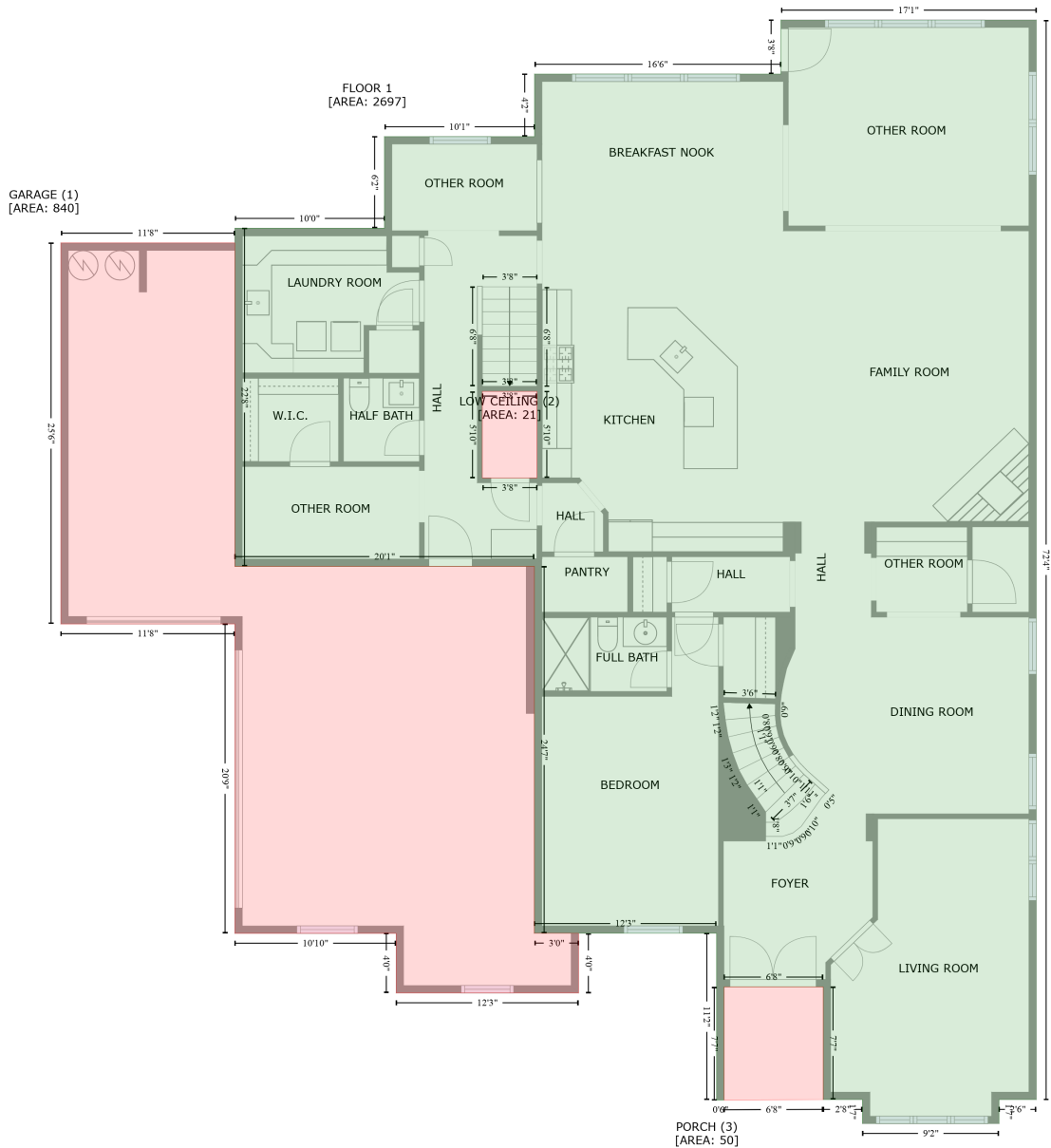


104 Campbell Court, Weddington, Union County, North Carolina, United States, 28173

Gross Living Area: 4969 sq. ft



Space	Area (sq. ft)	Calculation
FLOOR 1 (Living area)	2697	Coordinate Polygon Area Algorithm using inches $-((784 + 784) * (-0.9 - 867.1) + (784 + 754) * (867.1 - 867.1) + (754 + 754) * (867.1 - 886.4) + (754 + 644.2) * (886.4 - 886.4) + (644.2 + 644.2) * (886.4 - 867.1) + (644.2 + 612.6) * (867.1 - 867.1) + (612.6 + 612.6) * (867.1 - 776.5) + (612.6 + 532.8) * (776.5 - 776.5) + (532.8 + 532.8) * (776.5 - 867.4) + (532.8 + 526.8) * (867.4 - 867.4) + (526.8 + 526.8) * (867.4 - 733.4) + (526.8 + 380.3) * (733.4 - 733.4) + (380.3 + 380.3) * (733.4 - 438.4) + (380.3 + 139.3) * (438.4 - 438.4) + (139.3 + 139.3) * (438.4 - 166.5) + (139.3 + 259.7) * (166.5 - 166.5) + (259.7 + 259.7) * (166.5 - 92.9) + (259.7 + 380.4) * (92.9 - 92.9) + (380.4 + 380.4) * (92.9 - 42.6) + (380.4 + 578.6) * (42.6 -$

104 Campbell Court, Weddington, Union County, North Carolina, United States, 28173

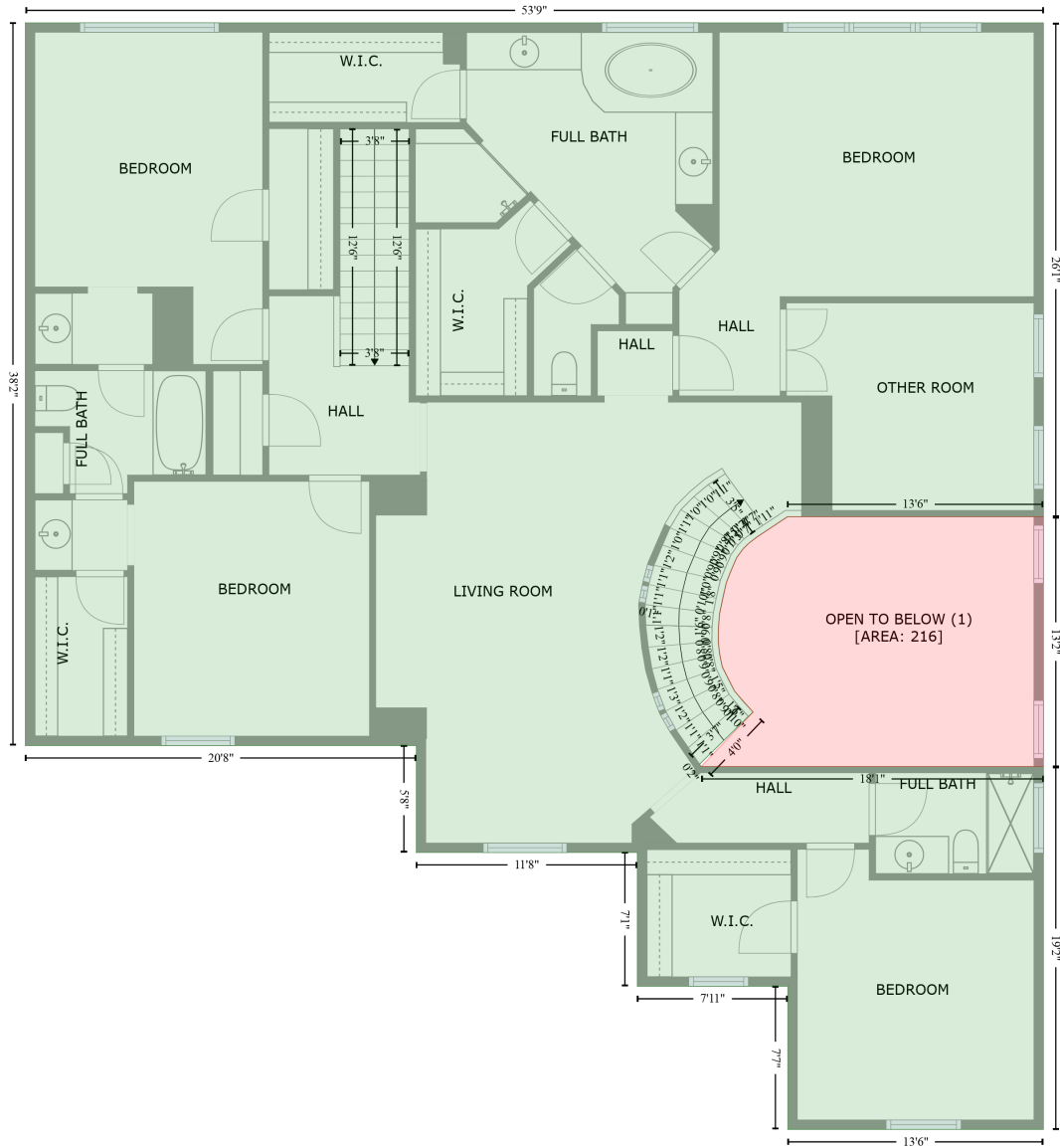
Gross Living Area: 4969 sq. ft

Space	Area (sq. ft)	Calculation <small>Coordinate Polygon Area Algorithm using inches</small>
		$42.6 + (578.6 + 578.6) * (42.6 - -0.9) + (578.6 + 784) * (-0.9 - -0.9) * 0.5 * 0.00694 + -((382.4 + 338.4) * (297.7 - 297.7) + (338.4 + 338.4) * (297.7 - 367.3) + (338.4 + 382.4) * (367.3 - 367.3) + (382.4 + 382.4) * (367.3 - 297.7)) * 0.5 * 0.00694$
GARAGE (Non-living area)	840	$-((139.3 + 139.3) * (178.4 - 438.4) + (139.3 + 380.3) * (438.4 - 438.4) + (380.3 + 380.3) * (438.4 - 733.4) + (380.3 + 415.9) * (733.4 - 733.4) + (415.9 + 415.9) * (733.4 - 781.4) + (415.9 + 269.1) * (781.4 - 781.4) + (269.1 + 269.1) * (781.4 - 733.5) + (269.1 + 139.4) * (733.5 - 733.5) + (139.4 + 139.4) * (733.5 - 484.7) + (139.4 + -0.5) * (484.7 - 484.7) + (-0.5 + -0.5) * (484.7 - 178.4) + (-0.5 + 139.3) * (178.4 - 178.4)) * 0.5 * 0.00694$
LOW CEILING (Non-living area)	21	$-((382.4 + 382.4) * (297.7 - 367.3) + (382.4 + 338.4) * (367.3 - 367.3) + (338.4 + 338.4) * (367.3 - 297.7) + (338.4 + 382.4) * (297.7 - 297.7)) * 0.5 * 0.00694$
PORCH (Non-living area)	50	$-((612.6 + 612.6) * (776.5 - 867.1) + (612.6 + 532.8) * (867.1 - 867.4) + (532.8 + 532.9) * (867.4 - 776.5) + (532.9 + 612.6) * (776.5 - 776.5)) * 0.5 * 0.00694$

104 Campbell Court, Weddington, Union County, North Carolina, United States, 28173

Gross Living Area: 4969 sq. ft

FLOOR 2
[AREA: 2272]



Space	Area (sq. ft)	Calculation
FLOOR 2 (Living area)	2272	Coordinate Polygon Area Algorithm using inches $-((784 + 784) * (166.5 - 479.2) + (784 + 621.9) * (479.2 - 479.2) + (621.9 + 602.5) * (479.2 - 492.1) + (602.5 + 597.1) * (492.1 - 496.3) + (597.1 + 593.7) * (496.3 - 499.7) + (593.7 + 589.8) * (499.7 - 505.1) + (589.8 + 586.3) * (505.1 - 513) + (586.3 + 583.2) * (513 - 521) + (583.2 + 578.9) * (521 - 540.8) + (578.9 + 578.2) * (540.8 - 549.2) + (578.2 + 578.1) * (549.2 - 558.2) + (578.1 + 579) * (558.2 - 566.2) + (579 + 580.7) * (566.2 - 574.2) + (580.7 + 588.4) * (574.2 - 589.6) + (588.4 + 600.2) * (589.6 - 602.9) + (600.2 + 566.2) * (602.9 - 635.8) + (566.2 + 567.3) * (635.8 - 637.4) + (567.3 + 784) * (637.4 - 637.4) + (784 + 784) * (637.4 - 867.1) + (784 + 622.2) * (867.1 -$

104 Campbell Court, Weddington, Union County, North Carolina, United States, 28173

Gross Living Area: 4969 sq. ft

Space	Area (sq. ft)	Calculation <small>Coordinate Polygon Area Algorithm using inches</small>
		$867.1 + (622.2 + 622.2) * (867.1 - 776.5) + (622.2 + 526.8) * (776.5 - 776.5) + (526.8 + 526.8) * (776.5 - 691.8) + (526.8 + 386.9) * (691.8 - 691.8) + (386.9 + 386.9) * (691.8 - 624.1) + (386.9 + 139.3) * (624.1 - 624.1) + (139.3 + 139.3) * (624.1 - 166.5) + (139.3 + 784) * (166.5 - 166.5) * 0.5 * 0.00694$
OPEN TO BELOW (Non-living area)	216	$-((784 + 784) * (479.2 - 637.4) + (784 + 567.3) * (637.4 - 637.4) + (567.3 + 600.2) * (637.4 - 602.9) + (600.2 + 588.4) * (602.9 - 589.6) + (588.4 + 580.7) * (589.6 - 574.2) + (580.7 + 579) * (574.2 - 566.2) + (579 + 578.1) * (566.2 - 558.2) + (578.1 + 578.2) * (558.2 - 549.2) + (578.2 + 578.9) * (549.2 - 540.8) + (578.9 + 583.2) * (540.8 - 521) + (583.2 + 586.3) * (521 - 513) + (586.3 + 589.8) * (513 - 505.1) + (589.8 + 593.7) * (505.1 - 499.7) + (593.7 + 597.1) * (499.7 - 496.3) + (597.1 + 602.5) * (496.3 - 492.1) + (602.5 + 621.9) * (492.1 - 479.2) + (621.9 + 784) * (479.2 - 479.2)) * 0.5 * 0.00694$