

# FEATURES AND AMENITIES

1259 INSEL RD, WOODLAND, WA 98674



## INTERIOR FEATURES

### Kitchen

- Island with Butcher Block Top
- Stainless Steel Appliances
- Under Cabinet Lighting
- Walk-In Pantry
- Built-In Microwave & Dishwasher
- Free Standing Refrigerator
- Garbage Disposal
- Full Height Backsplash
- Hardwood Floor
- Tech Area

### Dining Area

- Picture Windows with Views
- Door to Wrap Around Deck
- Invisible Screen Door
- Hardwood Floor

### Living Room

- Gas Fireplace
- Wall to Wall Carpet
- Great Room

### Powder Bath

- Pedestal Sink
- Hardwood Floor

### Primary Suite

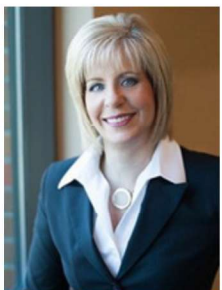
- Beamed Ceiling
- Wall to Wall Carpet
- Two Walk-In Closets

### Primary Suite Bathroom

- Solid Surface Counter
- Walk-in Shower
- Jetted Tub
- Toilet Closet

### Laundry Room

- Washer & Dryer
- Cabinets Galore
- Utility Sink



### **Kim Nelson**

Luxury Home Marketing Specialist

Cell: 360.606.0776

Email: [Kim@homesbykimnelson.com](mailto:Kim@homesbykimnelson.com)

John L. Scott Real Estate

414 Pioneer ST; Suite 201

Ridgefield, WA 98642



**John L. Scott®**  
REAL ESTATE

---

## INTERIOR FEATURES

### Bedroom 2

- Walk-In Closet with Organizer
- Wall to Wall Carpet

### Hall Bathroom

- Full Bathroom
- Solid Surface Counter

### Bedroom 3

- Walk-In Closet with Organizer
- Wall to Wall Carpet

### Garage

- Finished 3-Car Garage (Insulated and painted)
- Garage Door Openers

### Exterior

- 6.2 Acre Parcel with Stunning Views
- Wrap Around Composite Covered/Uncovered Deck
- Front Yard Sprinkler System and Drip System
- Standard Septic System
- Shared Well
- Shed

## GENERAL INFORMATION

- Wainscotting and Crown Molding
- Honda 3500 Watt Generator on Designated Circuit
- Heat Pump with Three Zones for Heating and Cooling
- Central Vacuum
- River Run HOA Dues: \$1200.00/Year
- Current Wifi Serving Property: WiLine Networks, Currently Free of Charge to Seller.
- Woodland Schools
- Easy Freeway Access

