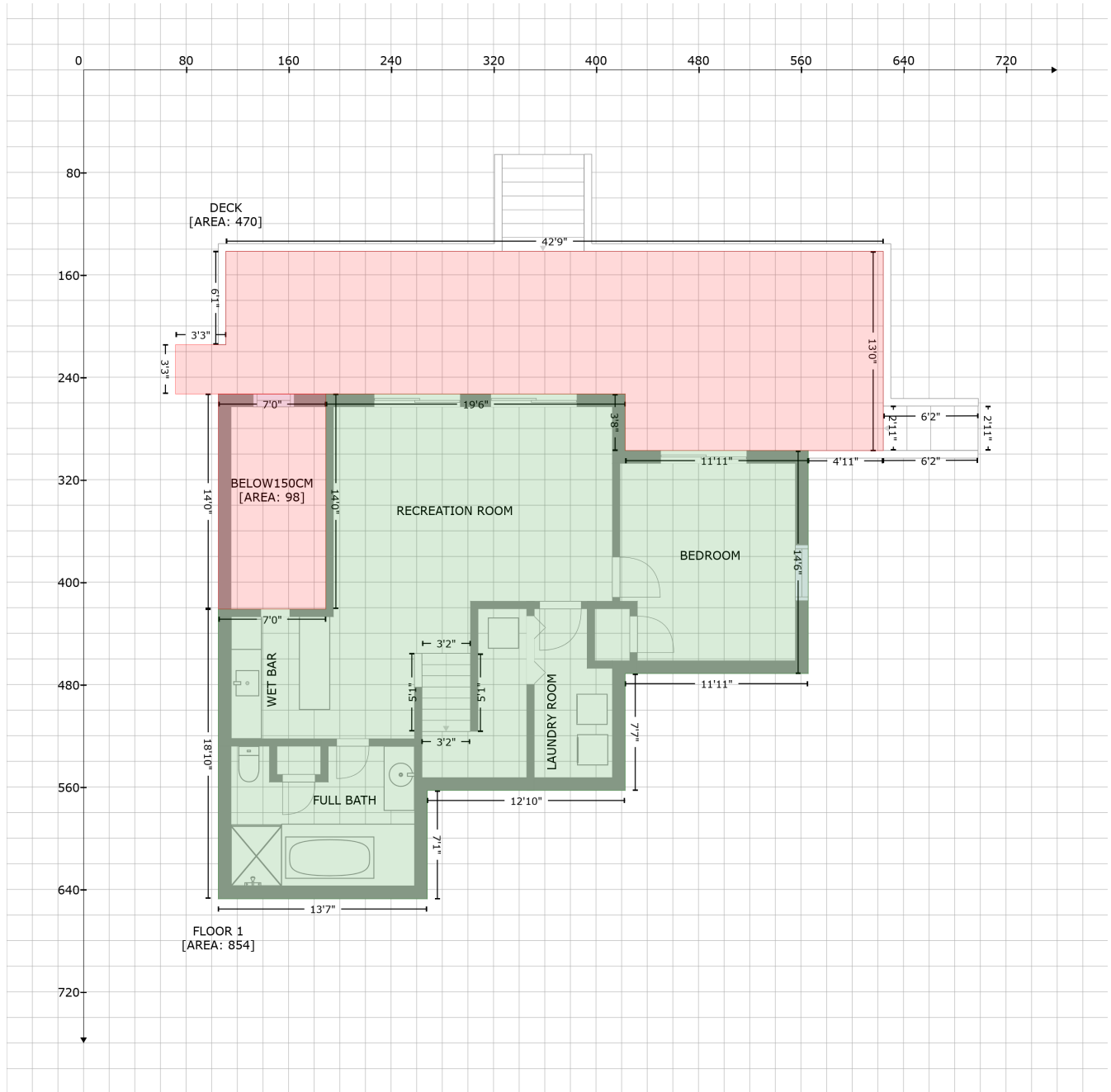


# 260 Buck Run Dr, Moneta, VA, United States

Gross Living Area: 2433 sq. ft



Space	Area (sq. ft)	Calculation <small>Coordinate Polygon Area Algorithm using inches</small>
FLOOR 1 (Living area)	854	$-\left((422.8 + 422.8) * (253.1 - 297.3) + (422.8 + 565.6) * (297.3 - 297.3) + (565.6 + 565.6) * (297.3 - 471.5) + (565.6 + 422.8) * (471.5 - 471.5) + (422.8 + 422.8) * (471.5 - 562.7) + (422.8 + 268.3) * (562.7 - 562.7) + (268.3 + 268.3) * (562.7 - 647.4) + (268.3 + 105.1) * (647.4 - 647.4) + (105.1 + 105.1) * (647.4 - 421.1) + (105.1 + 189.1) * (421.1 - 421.1) + (189.1 + 189.1) * (421.1 - 253.1) + (189.1 + 422.8) * (253.1 - 253.1)\right) * 0.5 * 0.00694$
BELOW150CM (Non-living area)	98	$-\left((189.1 + 189.1) * (253.1 - 421.1) + (189.1 + 105.1) * (421.1 - 421.1) + (105.1 + 105.1) * (421.1 - 253.1) + (105.1 + 189.1) * (253.1 - 253.1)\right) * 0.5 * 0.00694$

# 260 Buck Run Dr, Moneta, VA, United States

Gross Living Area: 2433 sq. ft

Space	Area (sq. ft)	Calculation <small>Coordinate Polygon Area Algorithm using inches</small>
DECK (Non-living area)	470	$-\left(\left(111.1 + 624.2\right) * \left(141.6 - 141.6\right) + \left(624.2 + 624.2\right) * \left(141.6 - 297.4\right) + \left(624.2 + 565.6\right) * \left(297.4 - 297.4\right) + \left(565.6 + 565.6\right) * \left(297.4 - 297.3\right) + \left(565.6 + 422.8\right) * \left(297.3 - 297.3\right) + \left(422.8 + 422.8\right) * \left(297.3 - 253.1\right) + \left(422.8 + 71.8\right) * \left(253.1 - 253.1\right) + \left(71.8 + 71.8\right) * \left(253.1 - 214.6\right) + \left(71.8 + 111.1\right) * \left(214.6 - 214.6\right) + \left(111.1 + 111.1\right) * \left(214.6 - 141.6\right)\right) * 0.5 * 0.00694$

# 260 Buck Run Dr, Moneta, VA, United States

Gross Living Area: 2433 sq. ft



## Space

## Area (sq. ft)

## Calculation Coordinate Polygon Area Algorithm using inches

FLOOR 2  
(Living area)

1074

$$\begin{aligned}
 & -((257.8 + 257.8) * (66.4 - 193.1) + (257.8 + 247.8) * (193.1 - 203.1) + (247.8 + 178) * (203.1 - 203.1) \\
 & + (178 + 178) * (203.1 - 366.1) + (178 + 85.1) * (366.1 - 366.1) + (85.1 + 85.1) * (366.1 - 366.2) \\
 & + (85.1 + 325.3) * (366.2 - 366.2) + (325.3 + 325.3) * (366.2 - 360.3) + (325.3 + 396.9) * \\
 & (360.3 - 360.3) + (396.9 + 396.9) * (360.3 - 203.1) + (396.9 + 392.8) * (203.1 - 193.1) + (392.8 + \\
 & 392.8) * (193.1 - 117.1) + (392.8 + 545.6) * (117.1 - 117.1) + (545.6 + 545.6) * (117.1 - 243) + \\
 & (545.6 + 576.3) * (243 - 243) + (576.3 + 576.3) * (243 - 407.4) + (576.3 + 572.2) * (407.4 - 417.4) \\
 & + (572.2 + 572.2) * (417.4 - 449.6) + (572.2 + 454.6) * (449.6 - 449.6) + (454.6 + 454.6) * (449.6 -
 \end{aligned}$$

# 260 Buck Run Dr, Moneta, VA, United States

Gross Living Area: 2433 sq. ft

Space	Area (sq. ft)	Calculation <small>Coordinate Polygon Area Algorithm using inches</small>
		$404.1 + (454.6 + 402.8) * (404.1 - 404.1) + (402.8 + 402.8) * (404.1 - 492.7) + (402.8 + 392.8) * (492.7 - 502.7) + (392.8 + 248.3) * (502.7 - 502.7) + (248.3 + 248.3) * (502.7 - 587.4) + (248.3 + 75.1) * (587.4 - 587.4) + (75.1 + 75.1) * (587.4 - 66.4) + (75.1 + 257.8) * (66.4 - 66.4) * 0.5 * 0.00694 + -((402.8 + 402.8) * (492.7 - 502.7) + (402.8 + 396.9) * (502.7 - 502.7) + (396.9 + 396.9) * (502.7 - 498.6) + (396.9 + 402.8) * (498.6 - 492.7)) * 0.5 * 0.00694 + -((251.9 + 251.9) * (199 - 203.1) + (251.9 + 247.8) * (203.1 - 203.1) + (247.8 + 251.9) * (203.1 - 199)) * 0.5 * 0.00694$
GARAGE (Non-living area)	504	$-((454.6 + 454.6) * (404.1 - 449.6) + (454.6 + 572.2) * (449.6 - 449.6) + (572.2 + 572.2) * (449.6 - 417.4) + (572.2 + 576.3) * (417.4 - 407.4) + (576.3 + 686.5) * (407.4 - 407.4) + (686.5 + 686.5) * (407.4 - 674.4) + (686.5 + 392.8) * (674.4 - 674.4) + (392.8 + 392.8) * (674.4 - 502.7) + (392.8 + 402.8) * (502.7 - 492.7) + (402.8 + 402.8) * (492.7 - 404.1) + (402.8 + 454.6) * (404.1 - 404.1)) * 0.5 * 0.00694$
GARAGE (Non-living area)	504	$-((402.8 + 396.9) * (492.7 - 498.6) + (396.9 + 396.9) * (498.6 - 502.7) + (396.9 + 402.8) * (502.7 - 502.7) + (402.8 + 402.8) * (502.7 - 492.7)) * 0.5 * 0.00694$
LOW CEILING (Non-living area)	255	$-((392.8 + 396.9) * (193.1 - 203.1) + (396.9 + 396.9) * (203.1 - 360.3) + (396.9 + 325.3) * (360.3 - 360.3) + (325.3 + 325.3) * (360.3 - 366.2) + (325.3 + 85.1) * (366.2 - 366.2) + (85.1 + 85.1) * (366.2 - 366.1) + (85.1 + 178) * (366.1 - 366.1) + (178 + 178) * (366.1 - 203.1) + (178 + 247.8) * (203.1 - 203.1) + (247.8 + 257.8) * (203.1 - 193.1) + (257.8 + 392.8) * (193.1 - 193.1)) * 0.5 * 0.00694$
LOW CEILING (Non-living area)	255	$-((251.9 + 247.8) * (199 - 203.1) + (247.8 + 251.9) * (203.1 - 203.1) + (251.9 + 251.9) * (203.1 - 199)) * 0.5 * 0.00694$
DECK (Non-living area)	299	$-((608.5 + 608.5) * (72.3 - 306.8) + (608.5 + 658.2) * (306.8 - 354.1) + (658.2 + 658.2) * (354.1 - 407.4) + (658.2 + 576.3) * (407.4 - 407.4) + (576.3 + 576.3) * (407.4 - 243) + (576.3 + 545.6) * (243 - 243) + (545.6 + 545.6) * (243 - 117.1) + (545.6 + 392.8) * (117.1 - 117.1) + (392.8 + 392.8) * (117.1 - 193.1) + (392.8 + 257.8) * (193.1 - 193.1) + (257.8 + 257.8) * (193.1 - 72.3) + (257.8 + 608.5) * (72.3 - 72.3)) * 0.5 * 0.00694$
PORCH (Non-living area)	85	$-((392.8 + 392.8) * (502.7 - 587.6) + (392.8 + 248.3) * (587.6 - 587.4) + (248.3 + 248.3) * (587.4 - 502.7) + (248.3 + 392.8) * (502.7 - 502.7)) * 0.5 * 0.00694$

# 260 Buck Run Dr, Moneta, VA, United States

Gross Living Area: 2433 sq. ft



Space	Area (sq. ft)	Calculation <small>Coordinate Polygon Area Algorithm using inches</small>
FLOOR 3 (Living area)	505	$  \begin{aligned}  & -((435.6 + 435.6) * (123 - 365.8) + (435.6 + 489.5) * (365.8 - 365.8) + (489.5 + 489.5) * (365.8 - 478.4) + (489.5 + 292.8) * (478.4 - 478.4) + (292.8 + 292.8) * (478.4 - 382.7) + (292.8 + 252.8) * \\  & (382.7 - 382.7) + (252.8 + 252.8) * (382.7 - 340.7) + (252.8 + 225.9) * (340.7 - 340.7) + (225.9 + 225.9) * (340.7 - 293.3) + (225.9 + 292.8) * (293.3 - 293.3) + (292.8 + 292.8) * (293.3 - 133) + \\  & (292.8 + 302.8) * (133 - 123) + (302.8 + 435.6) * (123 - 123) * 0.5 * 0.00694 + -((144.2 + 144.2) * (236.8 - 372.7) + (144.2 + 148.3) * (372.7 - 372.7) + (148.3 + 148.3) * (372.7 - 382.7) + (148.3 + 68) * \\  & (382.7 - 382.7) + (68 + 68) * (382.7 - 236.8) + (68 + 144.2) * (236.8 - 236.8) * 0.5 * 0.00694  \end{aligned}  $

# 260 Buck Run Dr, Moneta, VA, United States

Gross Living Area: 2433 sq. ft

Space	Area (sq. ft)	Calculation <small>Coordinate Polygon Area Algorithm using inches</small>
OPEN TO BELOW (Non-living area)	259	$-\left((302.8 + 302.8) * (73.1 - 123) + (302.8 + 292.8) * (123 - 133) + (292.8 + 292.8) * (133 - 236.8) + (292.8 + 68) * (236.8 - 236.8) + (68 + 68) * (236.8 - 73.1) + (68 + 302.8) * (73.1 - 73.1)\right) * 0.5 * 0.00694$
LOW CEILING (Non-living area)	32	$-\left((530.9 + 530.9) * (365.8 - 478.4) + (530.9 + 489.5) * (478.4 - 478.4) + (489.5 + 489.5) * (478.4 - 365.8) + (489.5 + 530.9) * (365.8 - 365.8)\right) * 0.5 * 0.00694$
LOW CEILING (Non-living area)	117	$-\left((292.8 + 292.8) * (236.8 - 293.3) + (292.8 + 225.9) * (293.3 - 293.3) + (225.9 + 225.9) * (293.3 - 340.7) + (225.9 + 252.8) * (340.7 - 340.7) + (252.8 + 252.8) * (340.7 - 382.7) + (252.8 + 148.3) * (382.7 - 382.7) + (148.3 + 148.3) * (382.7 - 372.7) + (148.3 + 144.2) * (372.7 - 372.7) + (144.2 + 144.2) * (372.7 - 236.8) + (144.2 + 292.8) * (236.8 - 236.8)\right) * 0.5 * 0.00694$