

101 Lake Ridge Dr, Gretna, VA, United States

Gross Living Area: 2764 sq. ft



Space	Area (sq. ft)	Calculation
FLOOR 1 (Living area)	856	$-(454.1 + 454.1) * (226.2 - 299.3) + (454.1 + 428.5) * (299.3 - 299.3) + (428.5 + 428.5) * (299.3 - 370.5) + (428.5 + 454.6) * (370.5 - 370.5) + (454.6 + 454.6) * (370.5 - 418.9) + (454.6 + 468.3) * (418.9 - 418.9) + (468.3 + 468.3) * (418.9 - 527.3) + (468.3 + 424.1) * (527.3 - 527.3) + (424.1 + 424.1) * (527.3 - 547.9) + (424.1 + 414.1) * (547.9 - 557.9) + (414.1 + 319.7) * (557.9 - 557.9) + (319.7 + 231.4) * (557.9 - 500.6) + (231.4 + 257.3) * (500.6 - 460.6) + (257.3 + 266.1) * (460.6 - 455.6) + (266.1 + 274.8) * (455.6 - 460.6) + (274.8 + 252.3) * (460.6 - 447.3) + (252.3 + 250.1) * (447.3 - 452.1) + (250.1 + 121.4) * (452.1 - 452.1) + (121.4 + 121.4) * (452.1 - 304) + (121.4 + 270.7) * (304 - 304) + (270.7 + 270.7) * (304 - 226.2) + (270.7 + 454.1) * (226.2 - 226.2) * 0.5 * 0.00694 - ((424.1 + 424.1) * (547.9 - 555.2) + (424.1 + 418.2) * (555.2 - 555.2) + (418.2 + 418.2) * (555.2 - 554) + (418.2 + 424.1) * (554 - 547.9)) * 0.5 * 0.00694 + ((856.5 + 856.5) * (226.2 - 372.9) + (856.5 + 852.4) * (372.9 - 382.9) + (852.4 + 852.4) * (382.9 - 424.8) + (852.4 + 671.3) * (424.8 - 424.8) + (671.3 + 671.3) * (424.8 - 367.9) + (671.3 + 642.4) * (367.9 - 367.9) + (642.4 + 642.4) * (367.9 - 226.2) + (642.4 + 856.5) * (226.2 - 226.2)) * 0.5 * 0.00694$
PATIO (Non-living area)	478	$-(856.5 + 856.5) * (148.5 - 226.2) + (856.5 + 270.7) * (226.2 - 226.2) + (270.7 + 270.7) * (226.2 - 304) + (270.7 + 121.4) * (304 - 304) + (121.4 + 120.6) * (304 - 148.5) + (120.6 + 856.5) * (148.5 - 148.5) * 0.5 * 0.00694$
STORAGE (Non-living area)	428	$-(930.3 + 930.3) * (372.9 - 525.3) + (930.3 + 856.5) * (525.3 - 525.3) + (856.5 + 856.5) * (525.3 - 558.5) + (856.5 + 685) * (558.5 - 558.5) + (685 + 685) * (558.5 - 581.7) + (685 + 582.6) * (581.7 - 581.7) + (582.6 + 582.6) * (581.7 - 559.7) + (582.6 + 516.7) * (559.7 - 516.7) + (516.7 + 506.7) * (559.7 - 549.7) + (506.7 + 506.7) * (549.7 - 418.9) + (506.7 + 671.3) * (418.9 - 418.9) + (671.3 + 671.3) * (418.9 - 424.8) + (671.3 + 852.4) * (424.8 - 424.8) + (852.4 + 852.4) * (424.8 - 382.9) + (852.4 + 856.5) * (382.9 - 372.9) + (856.5 + 930.3) * (372.9 - 372.9) * 0.5 * 0.00694$
LOW CEILING	331	$-(642.4 + 642.4) * (226.2 - 367.9) + (642.4 + 671.3) * (367.9 - 367.9) + (671.3 + 671.3) * (367.9 -$

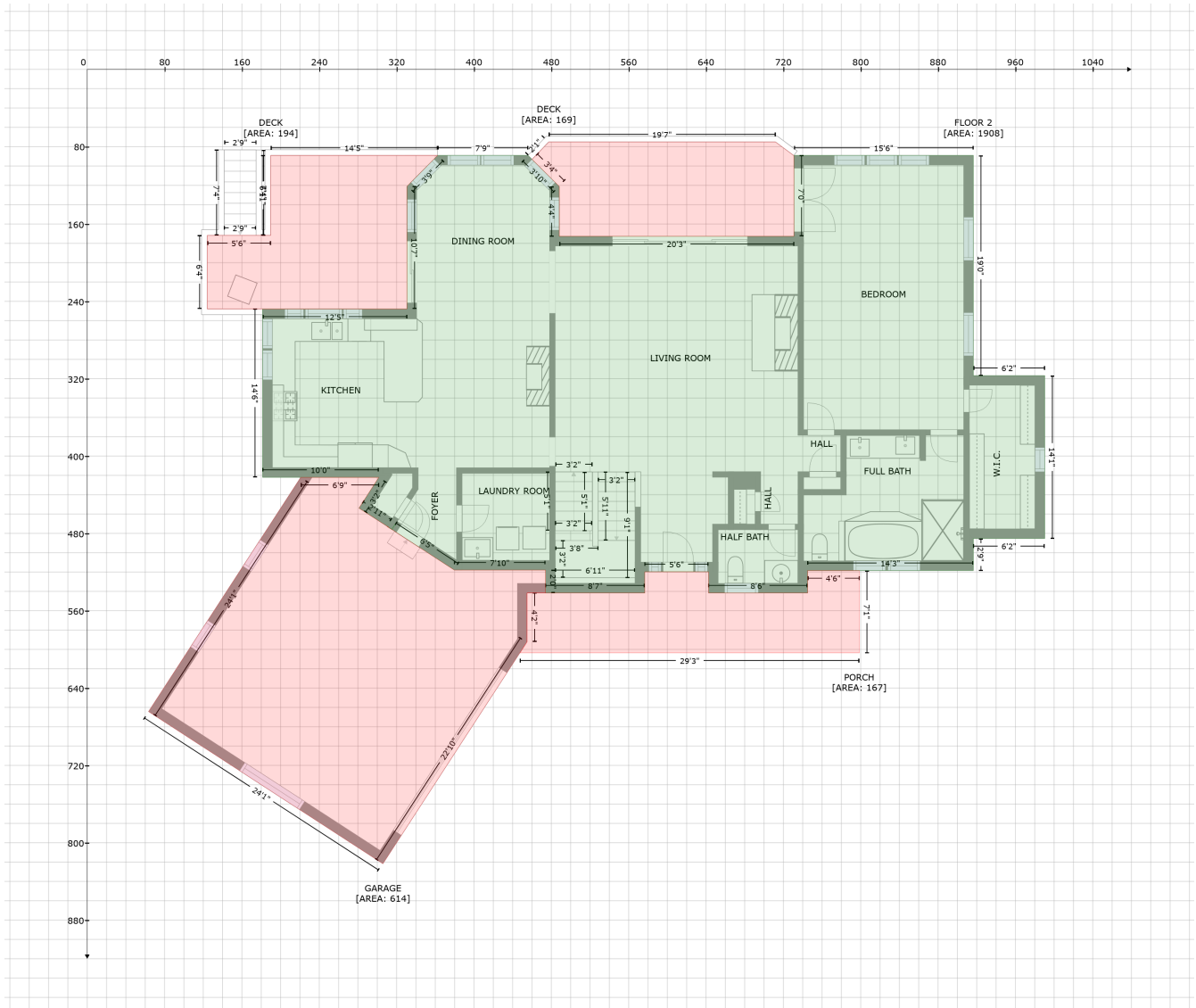
101 Lake Ridge Dr, Gretna, VA, United States

Gross Living Area: 2764 sq. ft

Space	Area (sq. ft)	Calculation <small>Coordinate Polygon Area Algorithm using inches</small>
(Non-living area)		$418.9 + (671.3 + 506.7) * (418.9 - 418.9) + (506.7 + 506.7) * (418.9 - 549.7) + (506.7 + 516.7) * (549.7 - 559.7) + (516.7 + 516.7) * (559.7 - 571.7) + (516.7 + 414.1) * (571.7 - 571.7) + (414.1 + 414.1) * (571.7 - 557.9) + (414.1 + 424.1) * (557.9 - 547.9) + (424.1 + 424.1) * (547.9 - 527.3) + (424.1 + 468.3) * (527.3 - 527.3) + (468.3 + 468.3) * (527.3 - 418.9) + (468.3 + 454.6) * (418.9 - 418.9) + (454.6 + 454.6) * (418.9 - 370.5) + (454.6 + 428.5) * (370.5 - 370.5) + (428.5 + 428.5) * (370.5 - 299.3) + (428.5 + 454.1) * (299.3 - 299.3) + (454.1 + 454.1) * (299.3 - 226.2) + (454.1 + 642.4) * (226.2 - 226.2) * 0.5 * 0.00694$
LOW CEILING (Non-living area)	331	$-((424.1 + 418.2) * (547.9 - 554) + (418.2 + 418.2) * (554 - 555.2) + (418.2 + 424.1) * (555.2 - 555.2) + (424.1 + 424.1) * (555.2 - 547.9)) * 0.5 * 0.00694$

101 Lake Ridge Dr, Gretna, VA, United States

Gross Living Area: 2764 sq. ft



Space	Area (sq. ft)	Calculation
FLOOR 2 (Living area)	1908	$ \begin{aligned} & -((455.8 + 488.2) * (89 - 121.1) + (488.2 + 488.2) * (121.1 - 172.7) + (488.2 + 730.9) * (172.7 - \\ & 172.7) + (730.9 + 730.9) * (172.7 - 89) + (730.9 + 916.5) * (89 - 89) + (916.5 + 916.5) * (89 - \\ & 316.8) + (916.5 + 990.3) * (316.8 - 316.8) + (990.3 + 990.3) * (316.8 - 485.3) + (990.3 + 916.5) * \\ & (485.3 - 485.3) + (916.5 + 916.5) * (485.3 - 518.5) + (916.5 + 745) * (518.5 - 518.5) + (745 + 745) \\ & * (518.5 - 541.7) + (745 + 642.6) * (541.7 - 541.7) + (642.6 + 642.6) * (541.7 - 519.7) + (642.6 + \\ & 576.7) * (519.7 - 519.7) + (576.7 + 576.7) * (519.7 - 541.7) + (576.7 + 474.1) * (541.7 - 541.7) + \\ & (474.1 + 474.1) * (541.7 - 517.9) + (474.1 + 379.7) * (517.9 - 517.9) + (379.7 + 315.1) * (517.9 - \\ & 476) + (315.1 + 318.6) * (476 - 470.4) + (318.6 + 315) * (470.4 - 475.8) + (315 + 310.3) * (475.8 - \\ & 472.9) + (310.3 + 310.3) * (472.9 - 472.7) + (310.3 + 281.1) * (472.7 - 453.9) + (281.1 + 301.6) * \\ & (453.9 - 422.1) + (301.6 + 181.4) * (422.1 - 422.1) + (181.4 + 181.4) * (422.1 - 247.9) + (181.4 + \\ & 330.7) * (247.9 - 247.9) + (330.7 + 330.7) * (247.9 - 121) + (330.7 + 362.4) * (121 - 89) + (362.4 + \\ & 455.8) * (89 - 89) * 0.5 * 0.00694 + -((310.1 + 315) * (472.9 - 475.8) + (315 + 315.1) * (475.8 - \\ & 476) + (315.1 + 310.1) * (476 - 472.9)) * 0.5 * 0.00694 \end{aligned} $
PORCH	167	$ \begin{aligned} & -((798.6 + 798.6) * (518.5 - 603.6) + (798.6 + 447.7) * (603.6 - 603.6) + (447.7 + 454.9) * (603.6 - \end{aligned} $

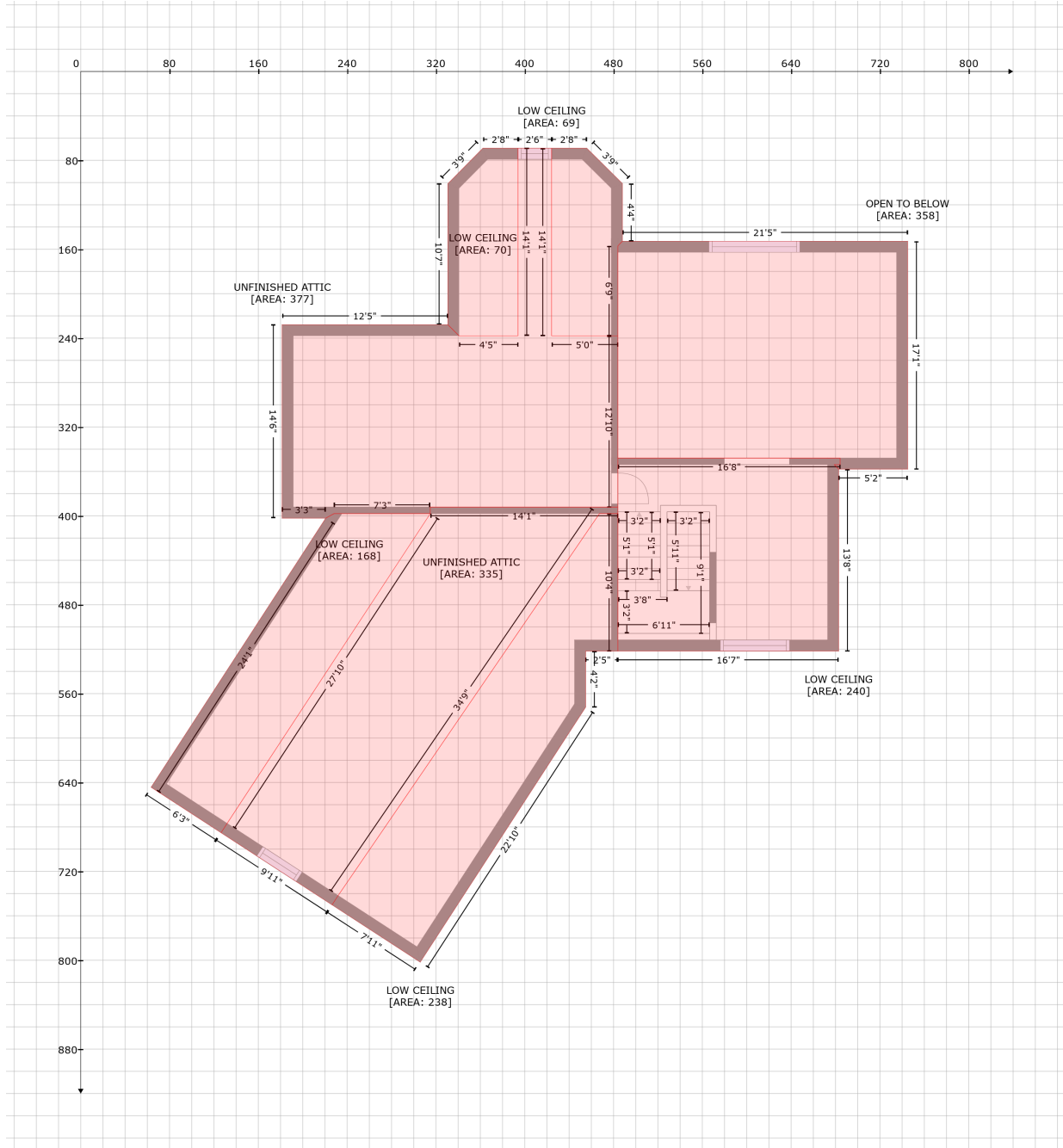
101 Lake Ridge Dr, Gretna, VA, United States

Gross Living Area: 2764 sq. ft

Space	Area (sq. ft)	Calculation <small>Coordinate Polygon Area Algorithm using inches</small>
(Non-living area)		$592.2 + (454.9 + 454.9) * (592.2 - 541.7) + (454.9 + 576.7) * (541.7 - 541.7) + (576.7 + 576.7) * (541.7 - 519.7) + (576.7 + 642.6) * (519.7 - 519.7) + (642.6 + 642.6) * (519.7 - 541.7) + (642.6 + 745) * (541.7 - 541.7) + (745 + 745) * (541.7 - 518.5) + (745 + 798.6) * (518.5 - 518.5) * 0.5 * 0.00694$
DECK (Non-living area)	194	$-((362.4 + 330.7) * (89 - 121) + (330.7 + 330.7) * (121 - 247.9) + (330.7 + 124.1) * (247.9 - 247.9) + (124.1 + 124.1) * (247.9 - 171.8) + (124.1 + 189.8) * (171.8 - 171.8) + (189.8 + 189.8) * (171.8 - 89.1) + (189.8 + 362.4) * (89.1 - 89)) * 0.5 * 0.00694$
DECK (Non-living area)	169	$-((711.9 + 730.8) * (75.1 - 89.2) + (730.8 + 730.9) * (89.2 - 172.7) + (730.9 + 488.2) * (172.7 - 172.7) + (488.2 + 488.2) * (172.7 - 121.1) + (488.2 + 460) * (121.1 - 93.1) + (460 + 477.3) * (93.1 - 75.1) + (477.3 + 711.9) * (75.1 - 75.1)) * 0.5 * 0.00694$
GARAGE (Non-living area)	614	$-((301.6 + 281.1) * (422.1 - 453.9) + (281.1 + 310.3) * (453.9 - 472.7) + (310.3 + 310.3) * (472.7 - 472.9) + (310.3 + 311.9) * (472.9 - 473.9) + (311.9 + 310.1) * (473.9 - 472.9) + (310.1 + 315.1) * (472.9 - 476) + (315.1 + 379.7) * (476 - 517.9) + (379.7 + 474.1) * (517.9 - 517.9) + (474.1 + 474.1) * (517.9 - 541.7) + (474.1 + 454.9) * (541.7 - 541.7) + (454.9 + 454.9) * (541.7 - 592.2) + (454.9 + 305.8) * (592.2 - 821.7) + (305.8 + 63.4) * (821.7 - 664.3) + (63.4 + 220.9) * (664.3 - 422.1) + (220.9 + 301.6) * (422.1 - 422.1)) * 0.5 * 0.00694$

101 Lake Ridge Dr, Gretna, VA, United States

Gross Living Area: 2764 sq. ft



Space	Area (sq. ft)	Calculation <small>Coordinate Polygon Area Algorithm using inches</small>
UNFINISHED ATTIC (Non-living area)	335	$-\left((483.9 + 483.9) * (392.1 - 398) + (483.9 + 467.4) * (398 - 398) + (467.4 + 231.9) * (398 - 741.8) + (231.9 + 226.4) * (741.8 - 750.2) + (226.4 + 126.4) * (750.2 - 685.2) + (126.4 + 131.9) * (685.2 - 676.8) + (131.9 + 314.9) * (676.8 - 398) + (314.9 + 314.9) * (398 - 392.1) + (314.9 + 483.9) * (392.1 - 392.1)\right) * 0.5 * 0.00694$
UNFINISHED ATTIC (Non-living area)	377	$-\left((424.2 + 424.2) * (69 - 237.9) + (424.2 + 483.9) * (237.9 - 237.9) + (483.9 + 483.9) * (237.9 - 392.1) + (483.9 + 314.9) * (392.1 - 392.1) + (314.9 + 314.9) * (392.1 - 398) + (314.9 + 228.2) * \right)$

101 Lake Ridge Dr, Gretna, VA, United States

Gross Living Area: 2764 sq. ft

Space	Area (sq. ft)	Calculation <small>Coordinate Polygon Area Algorithm using inches</small>
		$(398 - 398) + (228.2 + 220.7) * (398 - 402.1) + (220.7 + 181.4) * (402.1 - 402.1) + (181.4 + 181.4) * (402.1 - 227.9) + (181.4 + 330.7) * (227.9 - 227.9) + (330.7 + 340.7) * (227.9 - 237.9) + (340.7 + 393.9) * (237.9 - 237.9) + (393.9 + 393.9) * (237.9 - 69) + (393.9 + 424.2) * (69 - 69) * 0.5 * 0.00694$
LOW CEILING (Non-living area)	238	$-((483.9 + 483.9) * (398 - 521.7) + (483.9 + 454.9) * (521.7 - 521.7) + (454.9 + 454.9) * (521.7 - 572.2) + (454.9 + 305.8) * (572.2 - 801.7) + (305.8 + 226.4) * (801.7 - 750.2) + (226.4 + 231.9) * (750.2 - 741.8) + (231.9 + 467.4) * (741.8 - 398) + (467.4 + 483.9) * (398 - 398)) * 0.5 * 0.00694$
LOW CEILING (Non-living area)	168	$-((235.2 + 235.2) * (398 - 398.1) + (235.2 + 314.9) * (398.1 - 398) + (314.9 + 131.9) * (398 - 676.8) + (131.9 + 126.4) * (676.8 - 685.2) + (126.4 + 63.4) * (685.2 - 644.3) + (63.4 + 220.7) * (644.3 - 402.1) + (220.7 + 228.2) * (402.1 - 398) + (228.2 + 235.2) * (398 - 398)) * 0.5 * 0.00694$
LOW CEILING (Non-living area)	240	$-((684.1 + 684.1) * (348 - 353.9) + (684.1 + 678.9) * (353.9 - 353.9) + (678.9 + 682.9) * (353.9 - 358) + (682.9 + 682.9) * (358 - 521.7) + (682.9 + 483.9) * (521.7 - 521.7) + (483.9 + 483.9) * (521.7 - 348) + (483.9 + 684.1) * (348 - 348)) * 0.5 * 0.00694$
LOW CEILING (Non-living area)	69	$-((455.8 + 488) * (69 - 100.8) + (488 + 488) * (100.8 - 152.7) + (488 + 483.9) * (152.7 - 157) + (483.9 + 483.9) * (157 - 237.9) + (483.9 + 424.2) * (237.9 - 237.9) + (424.2 + 424.2) * (237.9 - 69) + (424.2 + 455.8) * (69 - 69)) * 0.5 * 0.00694$
LOW CEILING (Non-living area)	70	$-((393.9 + 393.9) * (69 - 237.9) + (393.9 + 340.7) * (237.9 - 237.9) + (340.7 + 330.7) * (237.9 - 227.9) + (330.7 + 330.7) * (227.9 - 101) + (330.7 + 362.4) * (101 - 69) + (362.4 + 393.9) * (69 - 69)) * 0.5 * 0.00694$
OPEN TO BELOW (Non-living area)	358	$-((745 + 745) * (152.7 - 358) + (745 + 682.9) * (358 - 358) + (682.9 + 678.9) * (358 - 353.9) + (678.9 + 684.1) * (353.9 - 353.9) + (684.1 + 684.1) * (353.9 - 348) + (684.1 + 483.9) * (348 - 348) + (483.9 + 483.9) * (348 - 157) + (483.9 + 488) * (157 - 152.7) + (488 + 745) * (152.7 - 152.7)) * 0.5 * 0.00694$