

102 Fairlea Ct, Lynchburg, VA, United States

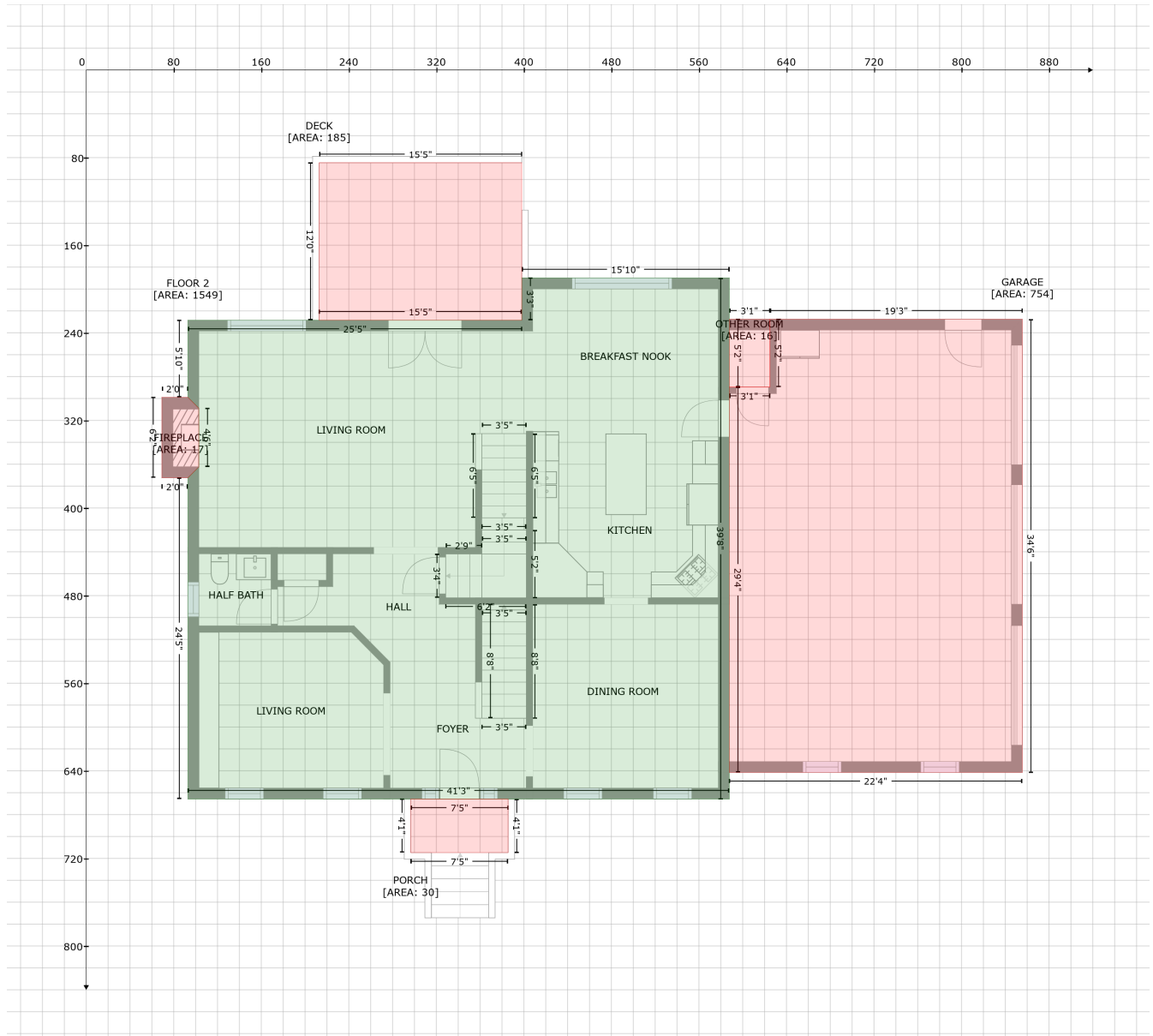
Gross Living Area: 5763 sq. ft



Space	Area (sq. ft)	Calculation <small>Coordinate Polygon Area Algorithm using inches</small>
FLOOR 1 (Living area)	1494	$-\left((694.7 + 694.7) * (69.8 - 87.5) + (694.7 + 727.7) * (87.5 - 87.5) + (727.7 + 727.7) * (87.5 - 545.8) + (727.7 + 233) * (545.8 - 545.8) + (233 + 233) * (545.8 - 252.5) + (233 + 243) * (252.5 - 242.5) + (243 + 243) * (242.5 - 188.9) + (243 + 233) * (188.9 - 178.9) + (233 + 233) * (178.9 - 114.4) + (233 + 243) * (114.4 - 108.5) + (243 + 538.1) * (108.5 - 108.5) + (538.1 + 538.1) * (108.5 - 69.8) + (538.1 + 694.7) * (69.8 - 69.8)\right) * 0.5 + 0.00694 - \left((542.2 + 501.6) * (267.2 - 267.2) + (501.6 + 501.6) * (267.2 - 321.9) + (501.6 + 416.6) * (321.9 - 321.9) + (416.6 + 416.6) * (321.9 - 362) + (416.6 + 542.2) * (362 - 362) + (542.2 + 542.2) * (362 - 267.2)\right) * 0.5 + 0.00694$
LOW CEILING (Non-living area)	50	$-\left((542.2 + 542.2) * (267.2 - 362) + (542.2 + 416.6) * (362 - 362) + (416.6 + 416.6) * (362 - 321.9) + (416.6 + 501.6) * (321.9 - 321.9) + (501.6 + 501.6) * (321.9 - 267.2) + (501.6 + 542.2) * (267.2 - 267.2)\right) * 0.5 + 0.00694$
PATIO (Non-living area)	464	$-\left((233 + 233) * (114.4 - 178.9) + (233 + 209.1) * (178.9 - 178.9) + (209.1 + 209.1) * (178.9 - 252.5) + (209.1 + 233) * (252.5 - 252.5) + (233 + 233) * (252.5 - 539.9) + (233 + 71.8) * (539.9 - 539.9) + (71.8 + 71.8) * (539.9 - 114.4) + (71.8 + 233) * (114.4 - 114.4)\right) * 0.5 + 0.00694$
FIREPLACE (Non-living area)	17	$-\left((233 + 243) * (178.9 - 188.9) + (243 + 243) * (188.9 - 242.5) + (243 + 233) * (242.5 - 252.5) + (233 + 209.1) * (252.5 - 252.5) + (209.1 + 209.1) * (252.5 - 178.9) + (209.1 + 233) * (178.9 - 178.9)\right) * 0.5 + 0.00694$

102 Fairlea Ct, Lynchburg, VA, United States

Gross Living Area: 5763 sq. ft



Space	Area (sq. ft)	Calculation <small>Coordinate Polygon Area Algorithm using inches</small>
FLOOR 2 (Living area)	1549	$-\left((587.7 + 587.7) * (189.8 - 665.8) + (587.7 + 93) * (665.8 - 665.8) + (93 + 93) * (665.8 - 372.5) + (93 + 103) * (372.5 - 362.5) + (103 + 103) * (362.5 - 308.9) + (103 + 93) * (308.9 - 298.9) + (93 + 93) * (298.9 - 228.5) + (93 + 398.1) * (228.5 - 228.5) + (398.1 + 398.1) * (228.5 - 189.8) + (398.1 + 587.7) * (189.8 - 189.8)\right) * 0.5 * 0.00694$
GARAGE (Non-living area)	754	$-\left((855.6 + 855.6) * (227.5 - 641.5) + (855.6 + 587.7) * (641.5 - 641.5) + (587.7 + 587.7) * (641.5 - 289.7) + (587.7 + 624.9) * (289.7 - 289.7) + (624.9 + 624.9) * (289.7 - 227.5) + (624.9 + 855.6) * (227.5 - 227.5)\right) * 0.5 * 0.00694$
OTHER ROOM (Non-living area)	16	$-\left((624.9 + 624.9) * (227.5 - 289.7) + (624.9 + 587.7) * (289.7 - 289.7) + (587.7 + 587.7) * (289.7 - 227.5) + (587.7 + 624.9) * (227.5 - 227.5)\right) * 0.5 * 0.00694$
DECK	185	$-\left((398.1 + 398.1) * (84.7 - 228.5) + (398.1 + 212.8) * (228.5 - 228.5) + (212.8 + 212.8) * (228.5 - \right)$

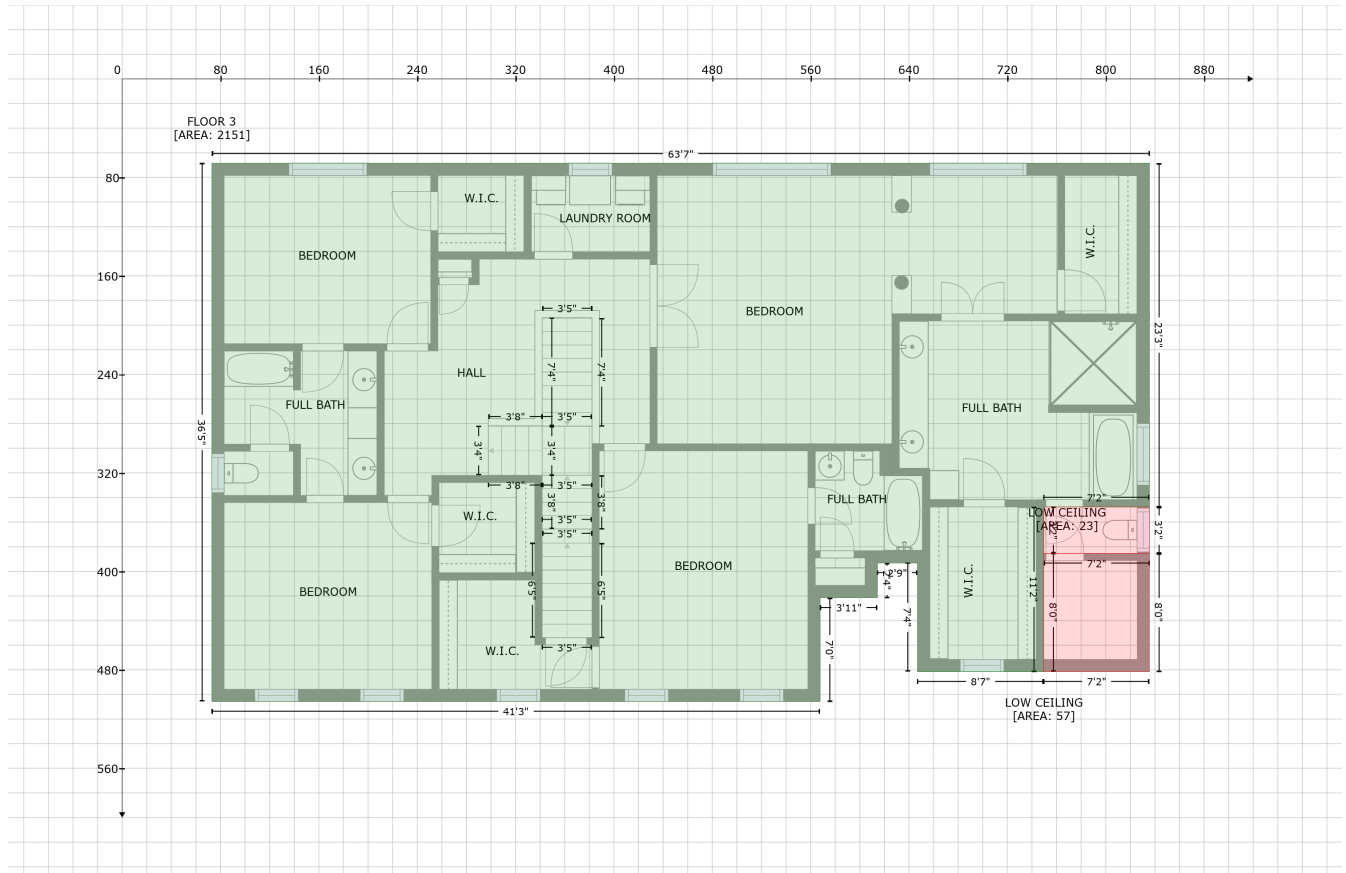
102 Fairlea Ct, Lynchburg, VA, United States

Gross Living Area: 5763 sq. ft

Space	Area (sq. ft)	Calculation <small>Coordinate Polygon Area Algorithm using inches</small>
(Non-living area)		$84.7 + (212.8 + 398.1) * (84.7 - 84.7)) * 0.5 * 0.00694$
PORCH (Non-living area)	30	$-((385.6 + 385.6) * (665.8 - 714.7) + (385.6 + 296.6) * (714.7 - 714.7) + (296.6 + 296.6) * (714.7 - 665.8) + (296.6 + 385.6) * (665.8 - 665.8)) * 0.5 * 0.00694$
FIREPLACE (Non-living area)	17	$-((93 + 103) * (298.9 - 308.9) + (103 + 103) * (308.9 - 362.5) + (103 + 93) * (362.5 - 372.5) + (93 + 69.1) * (372.5 - 372.5) + (69.1 + 69.1) * (372.5 - 298.9) + (69.1 + 93) * (298.9 - 298.9)) * 0.5 * 0.00694$

102 Fairlea Ct, Lynchburg, VA, United States

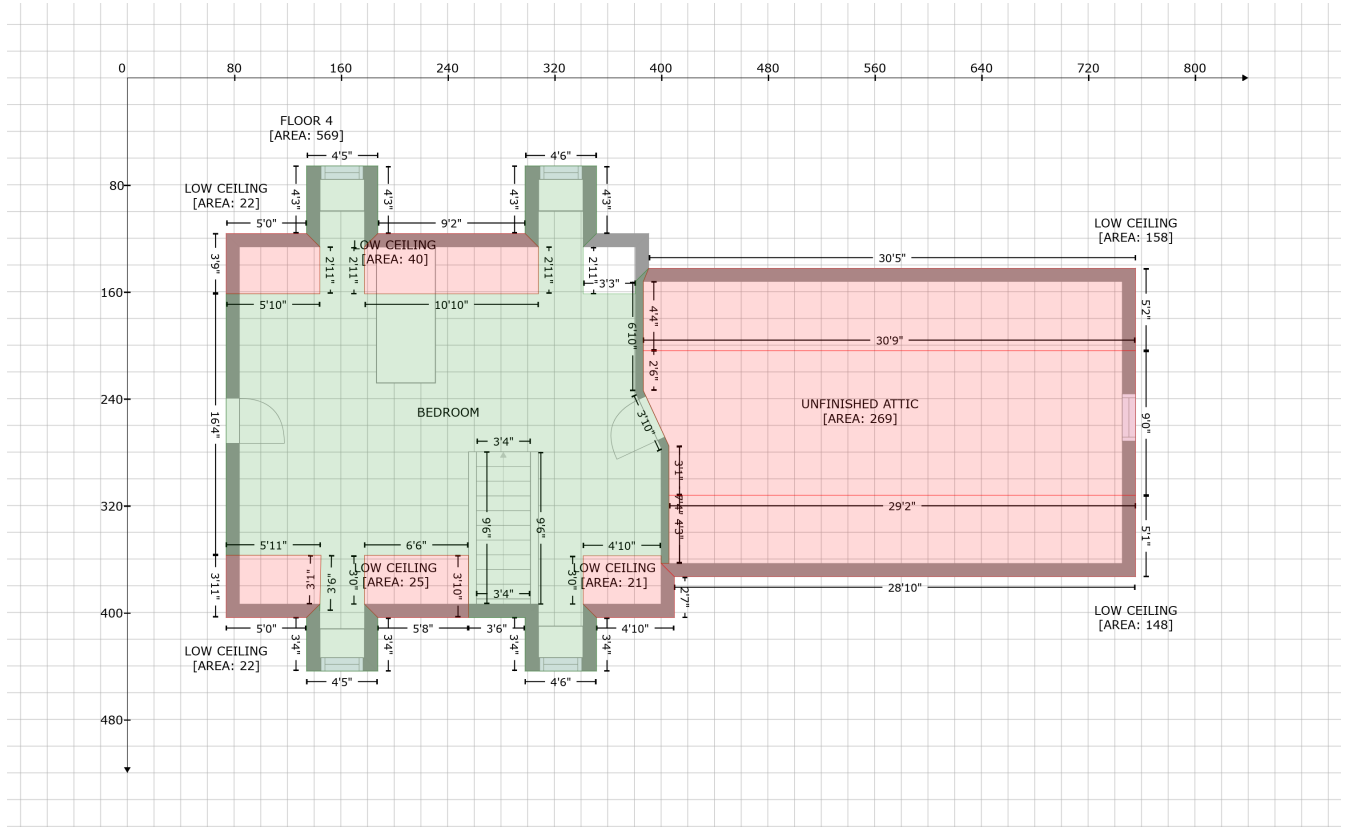
Gross Living Area: 5763 sq. ft



Space	Area (sq. ft)	Calculation <small>Coordinate Polygon Area Algorithm using inches</small>
FLOOR 3 (Living area)	2151	$-(835.6 + 835.6) * (68.5 - 347.7) + (835.6 + 749.6) * (347.7 - 347.7) + (749.6 + 749.6) * (347.7 - 481.5) + (749.6 + 646.9) * (481.5 - 481.5) + (646.9 + 646.9) * (481.5 - 393.2) + (646.9 + 614.3) * (393.2 - 393.2) + (614.3 + 614.3) * (393.2 - 421.5) + (614.3 + 567.7) * (421.5 - 421.5) + (567.7 + 567.7) * (421.5 - 505.8) + (567.7 + 73) * (505.8 - 505.8) + (73 + 73) * (505.8 - 68.5) + (73 + 835.6) * (68.5 - 68.5) * 0.5 * 0.00694$
LOW CEILING (Non-living area)	57	$-(835.6 + 835.6) * (385.4 - 481.5) + (835.6 + 749.6) * (481.5 - 481.5) + (749.6 + 749.6) * (481.5 - 385.4) + (749.6 + 835.6) * (385.4 - 385.4) * 0.5 * 0.00694$
LOW CEILING (Non-living area)	23	$-(835.6 + 835.6) * (347.7 - 385.4) + (835.6 + 749.6) * (385.4 - 385.4) + (749.6 + 749.6) * (385.4 - 347.7) + (749.6 + 835.6) * (347.7 - 347.7) * 0.5 * 0.00694$

102 Fairlea Ct, Lynchburg, VA, United States

Gross Living Area: 5763 sq. ft



Space	Area (sq. ft)	Calculation
FLOOR 4 (Living area)	569	$-(187.7 + 187.7) * (65.9 - 116.4) + (187.7 + 177.7) * (116.4 - 126.4) + (177.7 + 177.7) * (126.4 - 161.6) + (177.7 + 308.1) * (161.6 - 161.6) + (308.1 + 308.1) * (161.6 - 126.4) + (308.1 + 298.1) * (126.4 - 116.4) + (298.1 + 298.1) * (116.4 - 65.9) + (298.1 + 351.6) * (65.9 - 65.9) + (351.6 + 351.6) * (65.9 - 116.4) + (351.6 + 341.6) * (116.4 - 126.4) + (341.6 + 341.6) * (126.4 - 161.6) + (341.6 + 380.8) * (161.6 - 161.6) + (380.8 + 380.8) * (161.6 - 152.4) + (380.8 + 390.8) * (152.4 - 142.4) + (390.8 + 386.7) * (142.4 - 152.4) + (386.7 + 386.7) * (152.4 - 234.1) + (386.7 + 405.9) * (234.1 - 275.4) + (405.9 + 405.9) * (275.4 - 363.3) + (405.9 + 400) * (363.3 - 363.3) + (400 + 400) * (363.3 - 357.6) + (400 + 341.6) * (357.6 - 357.6) + (341.6 + 341.6) * (357.6 - 393.8) + (341.6 + 351.6) * (393.8 - 403.8) + (351.6 + 351.6) * (403.8 - 443.9) + (351.6 + 298.1) * (443.9 - 443.9) + (298.1 + 298.1) * (443.9 - 403.8) + (298.1 + 255.7) * (403.8 - 403.8) + (255.7 + 255.7) * (403.8 - 357.3) + (255.7 + 177.7) * (357.3 - 357.3) + (177.7 + 177.7) * (357.3 - 393.8) + (177.7 + 187.7) * (393.8 - 403.8) + (187.7 + 187.7) * (403.8 - 443.9) + (187.7 + 134.3) * (443.9 - 443.9) + (134.3 + 134.3) * (443.9 - 403.8) + (134.3 + 144.3) * (403.8 - 393.8) + (144.3 + 144.3) * (393.8 - 398.7) + (144.3 + 145.2) * (398.7 - 357.2) + (145.2 + 74) * (357.2 - 357.2) + (74 + 74) * (357.2 - 161.5) + (74 + 144.3) * (161.5 - 161.5) + (144.3 + 144.3) * (161.5 - 126.4) + (144.3 + 134.3) * (126.4 - 116.4) + (134.3 + 134.3) * (116.4 - 65.9) + (134.3 + 187.7) * (65.9 - 65.9) * 0.5 * 0.00694$
LOW CEILING (Non-living area)	21	$-(400 + 400) * (357.6 - 363.2) + (400 + 410) * (363.2 - 373.2) + (410 + 410) * (373.2 - 403.8) + (410 + 351.6) * (403.8 - 403.8) + (351.6 + 341.6) * (403.8 - 393.8) + (341.6 + 341.6) * (393.8 - 357.6) + (341.6 + 400) * (357.6 - 357.6) * 0.5 * 0.00694$
LOW CEILING (Non-living area)	22	$-(145.2 + 144.3) * (357.2 - 393.8) + (144.3 + 134.3) * (393.8 - 403.8) + (134.3 + 74) * (403.8 - 403.8) + (74 + 74) * (403.8 - 357.2) + (74 + 145.2) * (357.2 - 357.2) * 0.5 * 0.00694$
LOW CEILING (Non-living area)	25	$-(255.7 + 255.7) * (357.3 - 403.8) + (255.7 + 187.7) * (403.8 - 403.8) + (187.7 + 177.7) * (403.8 - 393.8) + (177.7 + 177.7) * (393.8 - 357.3) + (177.7 + 255.7) * (357.3 - 357.3) * 0.5 * 0.00694$
LOW CEILING (Non-living area)	148	$-(755.6 + 755.6) * (312.3 - 373.2) + (755.6 + 410) * (373.2 - 373.2) + (410 + 400.1) * (373.2 - 363.3) + (400.1 + 405.9) * (363.3 - 363.3) + (405.9 + 405.9) * (363.3 - 312.3) + (405.9 + 755.6) *$

102 Fairlea Ct, Lynchburg, VA, United States

Gross Living Area: 5763 sq. ft

Space	Area (sq. ft)	Calculation <small>Coordinate Polygon Area Algorithm using inches</small>
		$(312.3 - 312.3) * 0.5 * 0.00694$
LOW CEILING (Non-living area)	158	$-((755.6 + 755.6) * (142.4 - 204.1) + (755.6 + 386.7) * (204.1 - 204.1) + (386.7 + 386.7) * (204.1 - 152.4) + (386.7 + 390.8) * (152.4 - 142.4) + (390.8 + 755.6) * (142.4 - 142.4)) * 0.5 * 0.00694$
LOW CEILING (Non-living area)	40	$-((298.1 + 308.1) * (116.4 - 126.4) + (308.1 + 308.1) * (126.4 - 161.6) + (308.1 + 177.7) * (161.6 - 161.6) + (177.7 + 177.7) * (161.6 - 126.4) + (177.7 + 187.7) * (126.4 - 116.4) + (187.7 + 298.1) * (116.4 - 116.4)) * 0.5 * 0.00694$
LOW CEILING (Non-living area)	22	$-((134.3 + 144.3) * (116.4 - 126.4) + (144.3 + 144.3) * (126.4 - 161.5) + (144.3 + 74) * (161.5 - 161.5) + (74 + 74) * (161.5 - 116.4) + (74 + 134.3) * (116.4 - 116.4)) * 0.5 * 0.00694$
UNFINISHED ATTIC (Non-living area)	269	$-((755.6 + 755.6) * (204.1 - 312.3) + (755.6 + 405.9) * (312.3 - 312.3) + (405.9 + 405.9) * (312.3 - 275.4) + (405.9 + 386.7) * (275.4 - 234.1) + (386.7 + 386.7) * (234.1 - 204.1) + (386.7 + 755.6) * (204.1 - 204.1)) * 0.5 * 0.00694$