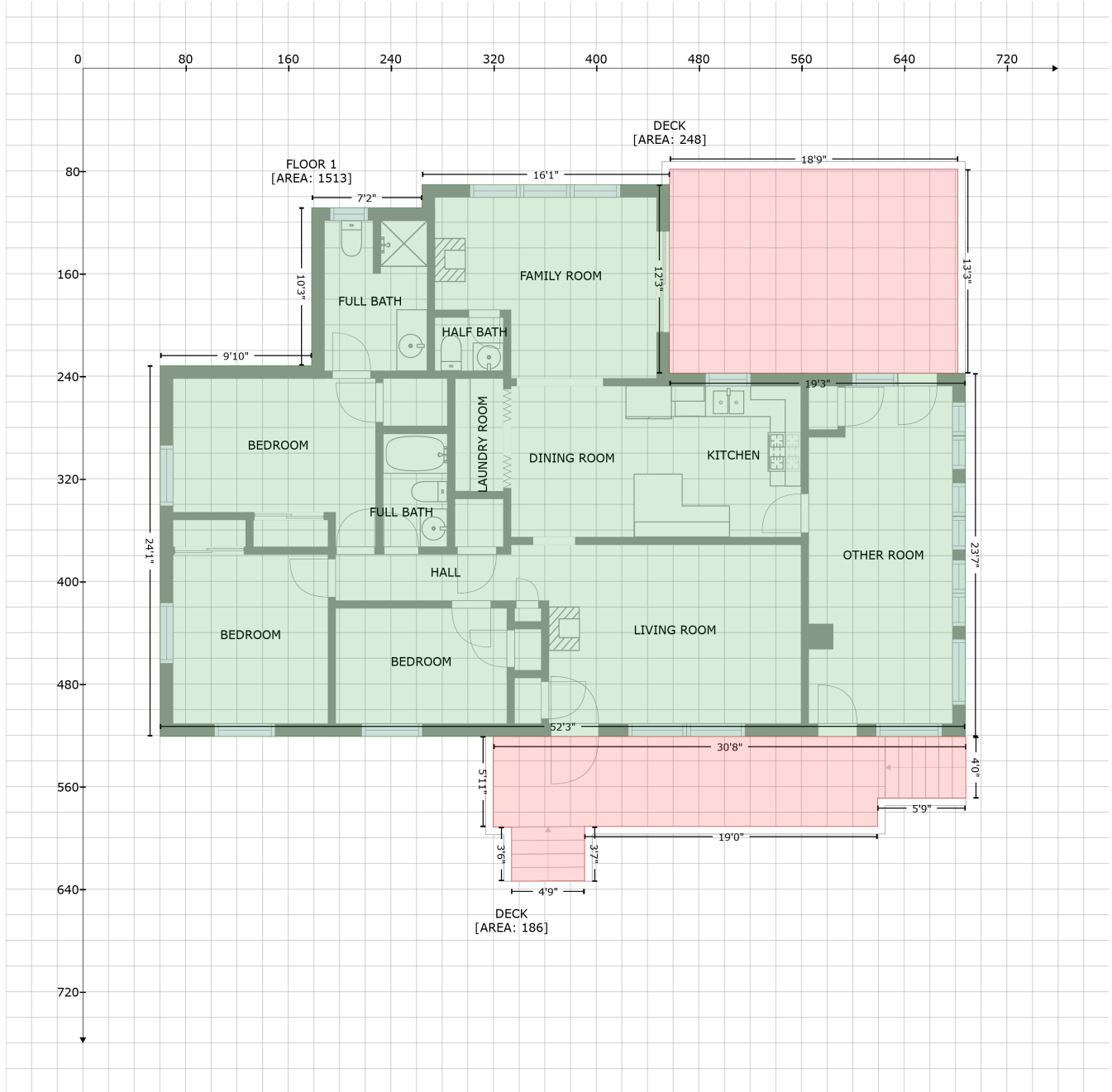


560 Park Street , Christiansburg, VA, United States

Gross Living Area: 1513 sq. ft



Space	Area (sq. ft)	Calculation <small>Coordinate Polygon Area Algorithm using inches</small>
FLOOR 1 (Living area)	1513	$-\left((457.1 + 457.1) * (90.6 - 237.7) + (457.1 + 687.7) * (237.7 - 237.7) + (687.7 + 687.7) * (237.7 - 521) + (687.7 + 60.2) * (521 - 521) + (60.2 + 60.2) * (521 - 231.8) + (60.2 + 178.3) * (231.8 - 231.8) + (178.3 + 178.3) * (231.8 - 108.7) + (178.3 + 264.2) * (108.7 - 108.7) + (264.2 + 264.2) * (108.7 - 90.6) + (264.2 + 457.1) * (90.6 - 90.6)\right) * 0.5 * 0.00694$
DECK (Non-living area)	186	$-\left((319.8 + 688.1) * (521 - 521.1) + (688.1 + 688.1) * (521.1 - 569) + (688.1 + 619.4) * (569 - 569) + (619.4 + 619.4) * (569 - 591.2) + (619.4 + 391) * (591.2 - 591.2) + (391 + 391) * (591.2 - 633.9) + (391 + 334.1) * (633.9 - 633.9) + (334.1 + 334.1) * (633.9 - 591.7) + (334.1 + 319.8) * (591.7 - 591.7)\right) * 0.5 * 0.00694$

560 Park Street , Christiansburg, VA, United States

Gross Living Area: 1513 sq. ft

Space	Area (sq. ft)	Calculation <small>Coordinate Polygon Area Algorithm using inches</small>
DECK (Non-living area)	248	$591.7 + (319.8 + 319.8) * (591.7 - 521)) * 0.5 * 0.00694$ $-((681.8 + 681.8) * (78.5 - 237.7) + (681.8 + 457.1) * (237.7 - 237.7) + (457.1 + 457.2) * (237.7 - 78.5) + (457.2 + 681.8) * (78.5 - 78.5)) * 0.5 * 0.00694$