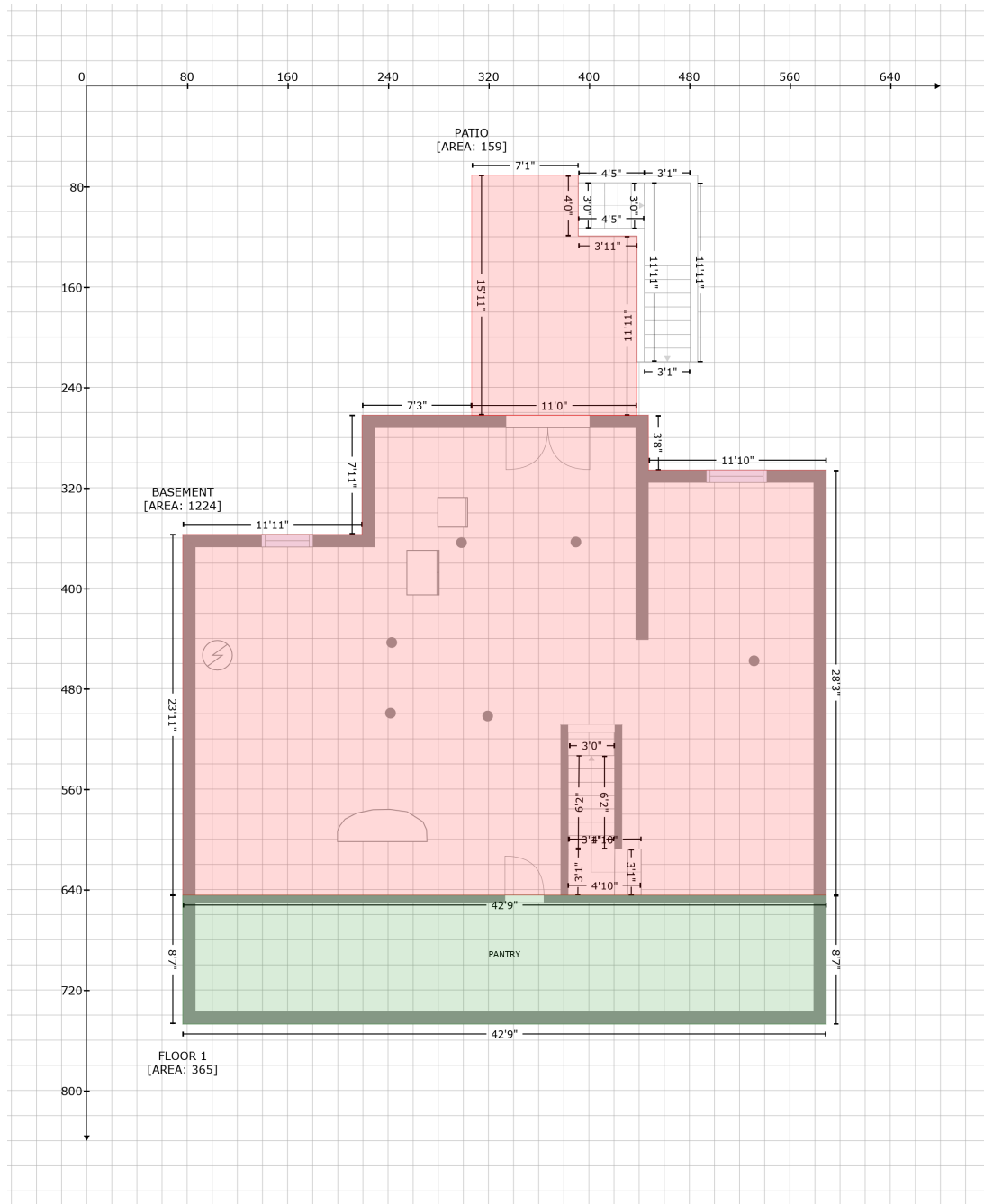


# 275 Lake Ridge Dr, Gretna, VA, United States

Gross Living Area: 2873 sq. ft



Space	Area (sq. ft)	Calculation <small>Coordinate Polygon Area Algorithm using inches</small>
FLOOR 1 (Living area)	365	$-((589.1 + 589.1) * (644.5 - 747.2) + (589.1 + 76.5) * (747.2 - 747.2) + (76.5 + 76.5) * (747.2 - 644.5) + (76.5 + 589.1) * (644.5 - 644.5)) * 0.5 * 0.00694$
PATIO (Non-living area)	159	$-((391.5 + 391.5) * (71.2 - 119.4) + (391.5 + 438.3) * (119.4 - 119.4) + (438.3 + 438.3) * (119.4 - 262.3) + (438.3 + 306.6) * (262.3 - 262.3) + (306.6 + 306.6) * (262.3 - 71.2) + (306.6 + 391.5) * (71.2 - 71.2)) * 0.5 * 0.00694$
BASEMENT	1224	$-((306.6 + 306.6) * (262.1 - 262.3) + (306.6 + 438.3) * (262.3 - 262.3) + (438.3 + 438.3) * (262.3 -$

# 275 Lake Ridge Dr, Gretna, VA, United States

Gross Living Area: 2873 sq. ft

Space	Area (sq. ft)	Calculation <small>Coordinate Polygon Area Algorithm using inches</small>
(Non-living area)		$262.1 + (438.3 + 447.3) * (262.1 - 262.1) + (447.3 + 447.5) * (262.1 - 305.8) + (447.5 + 589.1) * (305.8 - 305.8) + (589.1 + 589.1) * (305.8 - 644.5) + (589.1 + 76.5) * (644.5 - 644.5) + (76.5 + 76.5) * (644.5 - 357.1) + (76.5 + 219.3) * (357.1 - 357.1) + (219.3 + 219.3) * (357.1 - 262.1) + (219.3 + 306.6) * (262.1 - 262.1) * 0.5 * 0.00694$

# 275 Lake Ridge Dr, Gretna, VA, United States

Gross Living Area: 2873 sq. ft



Space	Area (sq. ft)	Calculation <small>Coordinate Polygon Area Algorithm using inches</small>
FLOOR 2 (Living area)	1258	$-\left((487.3 + 487.3) * (262.1 - 305.8) + (487.3 + 629.1) * (305.8 - 305.8) + (629.1 + 629.1) * (305.8 - 654.2) + (629.1 + 116.5) * (654.2 - 654.2) + (116.5 + 116.5) * (654.2 - 357.1) + (116.5 + 259.3) * (357.1 - 357.1) + (259.3 + 259.3) * (357.1 - 262.1) + (259.3 + 487.3) * (262.1 - 262.1)\right) * 0.5 * 0.00694$
DECK (Non-living area)	388	$-\left((461.3 + 478.5) * (128.7 - 146.5) + (478.5 + 478.3) * (146.5 - 219.6) + (478.3 + 521) * (219.6 - 219.6) + (521 + 520.8) * (219.6 - 262.1) + (520.8 + 259.3) * (262.1 - 262.1) + (259.3 + 259.3) * \right)$

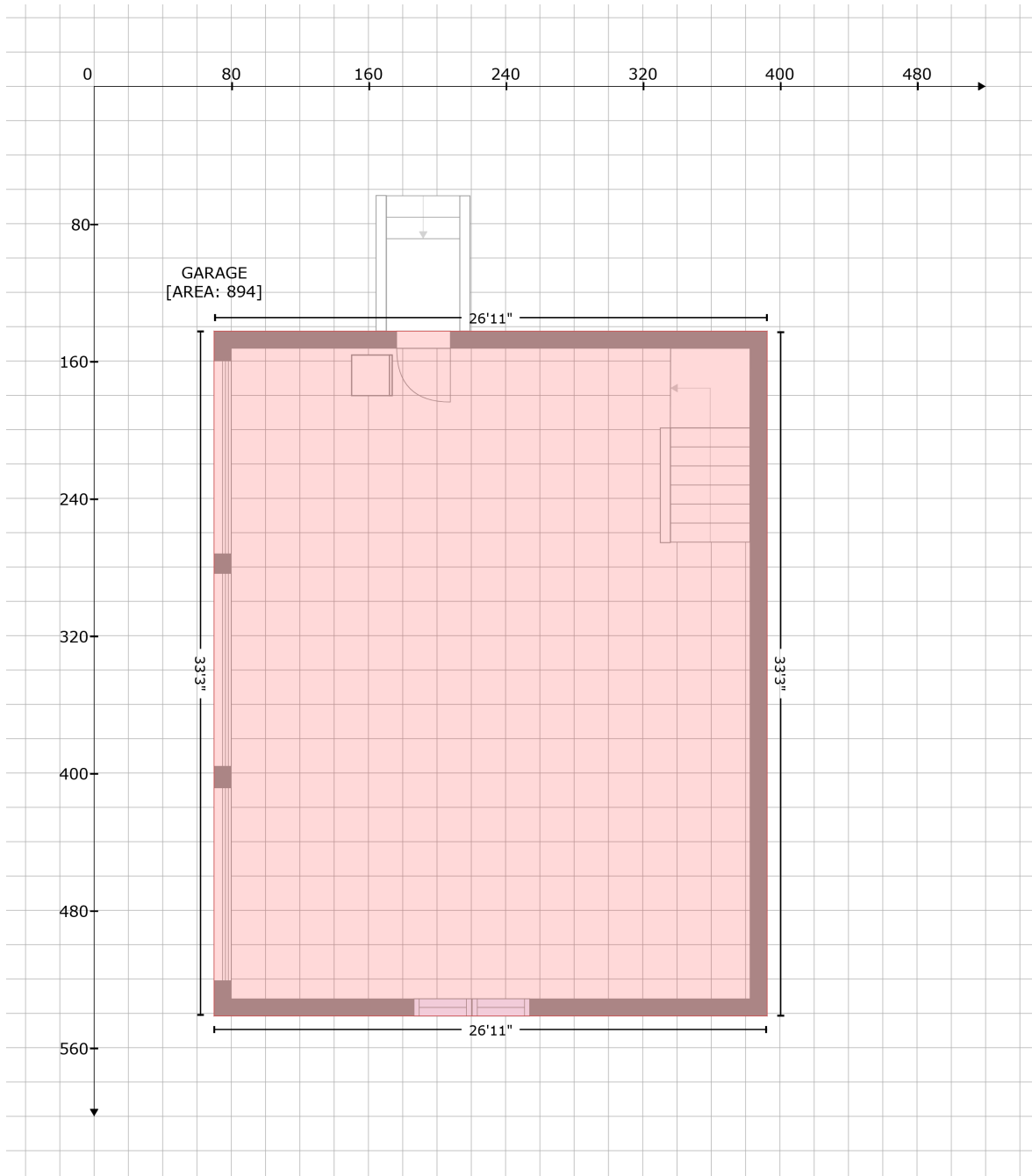
# 275 Lake Ridge Dr, Gretna, VA, United States

Gross Living Area: 2873 sq. ft

Space	Area (sq. ft)	Calculation <small>Coordinate Polygon Area Algorithm using inches</small>
PORCH (Non-living area)	301	$(262.1 - 357.1) + (259.3 + 214.3) * (357.1 - 357.1) + (214.3 + 75.7) * (357.1 - 357.1) + (75.7 + 75.7) * (357.1 - 220) + (75.7 + 259.3) * (220 - 220) + (259.3 + 259.5) * (220 - 146.7) + (259.5 + 279.8) * (146.7 - 128.7) + (279.8 + 461.3) * (128.7 - 128.7) * 0.5 * 0.00694$ $-((629.1 + 629.1) * (654.2 - 738.7) + (629.1 + 116.3) * (738.7 - 738.7) + (116.3 + 116.5) * (738.7 - 654.2) + (116.5 + 629.1) * (654.2 - 654.2)) * 0.5 * 0.00694$

# 275 Lake Ridge Dr, Gretna, VA, United States

Gross Living Area: 2873 sq. ft



Space	Area (sq. ft)	Calculation <small>Coordinate Polygon Area Algorithm using inches</small>
GARAGE (Non-living area)	894	$-((392.6 + 392.6) * (142.6 - 541.5) + (392.6 + 69.9) * (541.5 - 541.5) + (69.9 + 69.9) * (541.5 - 142.6) + (69.9 + 392.6) * (142.6 - 142.6)) * 0.5 * 0.00694$

# 275 Lake Ridge Dr, Gretna, VA, United States

Gross Living Area: 2873 sq. ft



Space	Area (sq. ft)	Calculation
FLOOR 4 (Living area)	677	Coordinate Polygon Area Algorithm using inches $-((542.8 + 542.8) * (105.8 - 171.9) + (542.8 + 589.1) * (171.9 - 171.9) + (589.1 + 589.1) * (171.9 - 350.5) + (589.1 + 484.2) * (350.5 - 350.5) + (484.2 + 484.2) * (350.5 - 406.4) + (484.2 + 488.3) * (406.4 - 416.4) + (488.3 + 488.3) * (416.4 - 454.2) + (488.3 + 373.3) * (454.2 - 454.2) + (373.3 + 373.3) * (454.2 - 379.6) + (373.3 + 267.8) * (379.6 - 379.6) + (267.8 + 267.8) * (379.6 - 454.2) + (267.8 + 189.2) * (454.2 - 454.2) + (189.2 + 189.2) * (454.2 - 416.1) + (189.2 + 193.3) * (416.1 - 406.1) + (193.3 + 193.3) * (406.1 - 362.8) + (193.3 + 76.5) * (362.8 - 362.8) + (76.5 + 76.5) * (362.8 - 224.3) + (76.5 + 136.4) * (224.3 - 224.3) + (136.4 + 136.4) * (224.3 - 157.1) + (136.4 + 186.6) * (157.1 - 157.1) + (186.6 + 186.6) * (157.1 - 224) + (186.6 + 229.3) * (224 - 224) + (229.3 + 229.3) * (224 - 254.9) + (229.3 + 420.3) * (254.9 - 254.9) + (420.3 + 420.3) * (254.9 - 444.2) + (420.3 + 420.4) * (444.2 - 444.2) + (420.4 + 420.5) * (444.2 - 254.8) + (420.5 + 437.5) * (254.8 - 254.8) + (437.5 + 437.4) * (254.8 - 172.1) + (437.4 + 443.1) * (172.1 - 172.1) + (443.1 + 486) * (172.1 - 172.1) + (486 + 486) * (172.1 - 105.8) + (486 + 542.8) * (105.8 - 105.8)) * 0.5 * 0.00694$
LOW CEILING (Non-living area)	48	$-((589.1 + 589.1) * (350.5 - 416.4) + (589.1 + 488.3) * (416.4 - 416.4) + (488.3 + 484.2) * (416.4 - 406.4) + (484.2 + 484.2) * (406.4 - 350.5) + (484.2 + 589.1) * (350.5 - 350.5)) * 0.5 * 0.00694$
LOW CEILING (Non-living area)	43	$-((193.3 + 193.3) * (362.8 - 406.1) + (193.3 + 189.2) * (406.1 - 416.1) + (189.2 + 76.5) * (416.1 - 416.1) + (76.5 + 76.5) * (416.1 - 362.8) + (76.5 + 193.3) * (362.8 - 362.8)) * 0.5 * 0.00694$
LOW CEILING (Non-living area)	28	$-((136.4 + 136.4) * (157.1 - 224.3) + (136.4 + 76.5) * (224.3 - 224.3) + (76.5 + 76.5) * (224.3 - 157.1) + (76.5 + 136.4) * (157.1 - 157.1)) * 0.5 * 0.00694$

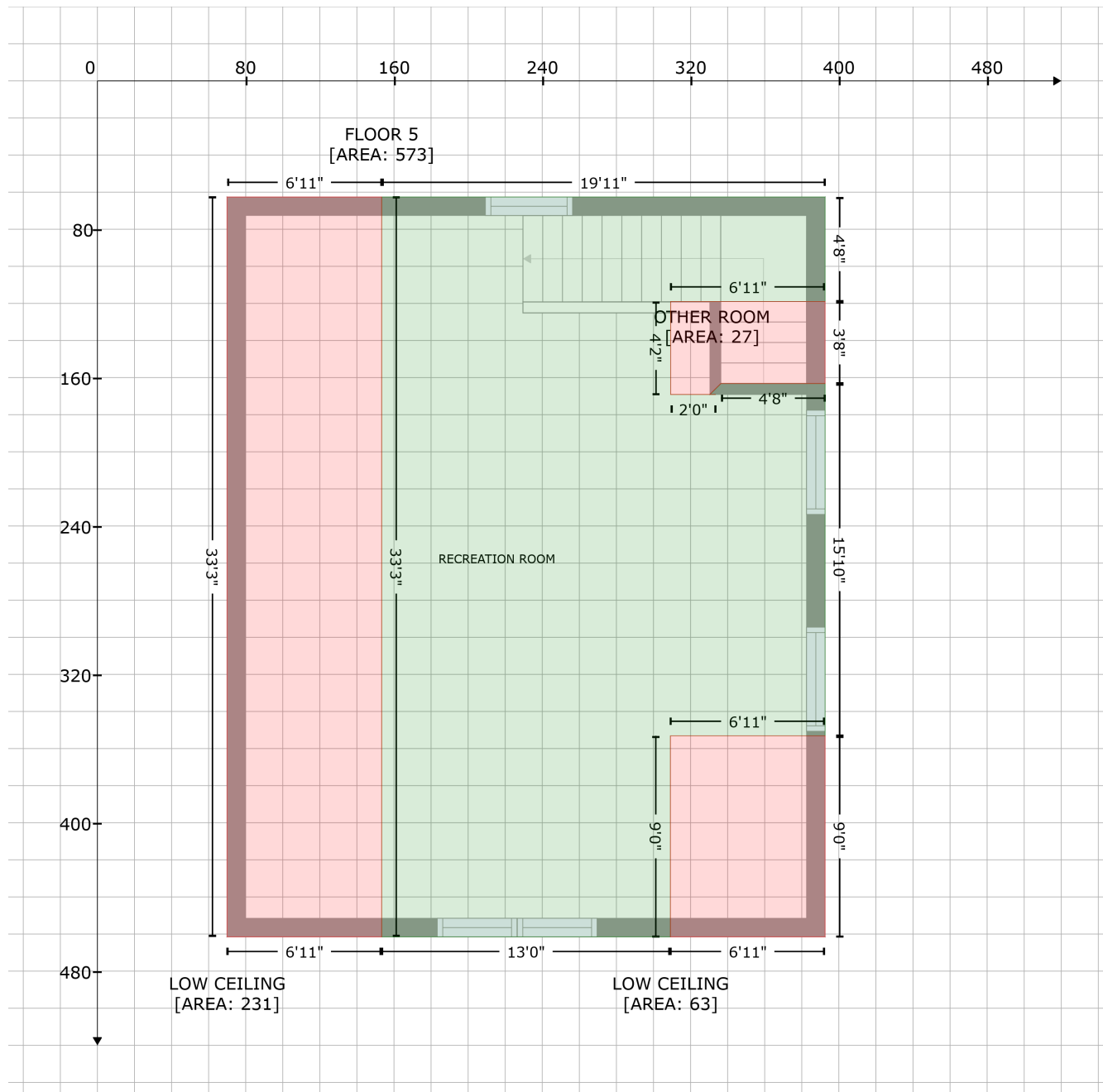
# 275 Lake Ridge Dr, Gretna, VA, United States

Gross Living Area: 2873 sq. ft

Space	Area (sq. ft)	Calculation <small>Coordinate Polygon Area Algorithm using inches</small>
LOW CEILING (Non-living area)	19	$-\left((219.3 + 229.3) * (157.1 - 167.1) + (229.3 + 229.3) * (167.1 - 224) + (229.3 + 186.6) * (224 - 224) + (186.6 + 186.6) * (224 - 157.1) + (186.6 + 219.3) * (157.1 - 157.1)\right) * 0.5 * 0.00694$
LOW CEILING (Non-living area)	22	$-\left((486 + 486) * (105.8 - 172.1) + (486 + 443.3) * (172.1 - 172.1) + (443.3 + 437.4) * (172.1 - 172.1) + (437.4 + 437.3) * (172.1 - 115.8) + (437.3 + 447.3) * (115.8 - 105.8) + (447.3 + 486) * (105.8 - 105.8)\right) * 0.5 * 0.00694$
LOW CEILING (Non-living area)	21	$-\left((589.1 + 589.1) * (105.8 - 171.9) + (589.1 + 542.8) * (171.9 - 171.9) + (542.8 + 542.8) * (171.9 - 105.8) + (542.8 + 589.1) * (105.8 - 105.8)\right) * 0.5 * 0.00694$
OPEN TO BELOW (Non-living area)	289	$-\left((447.3 + 447.3) * (62.1 - 105.8) + (447.3 + 437.3) * (105.8 - 115.8) + (437.3 + 437.5) * (115.8 - 157.1) + (437.5 + 437.4) * (157.1 - 172.1) + (437.4 + 437.5) * (172.1 - 254.8) + (437.5 + 420.5) * (254.8 - 254.8) + (420.5 + 420.3) * (254.8 - 254.9) + (420.3 + 229.3) * (254.9 - 254.9) + (229.3 + 229.3) * (254.9 - 167.1) + (229.3 + 219.3) * (167.1 - 157.1) + (219.3 + 219.3) * (157.1 - 62.1) + (219.3 + 447.3) * (62.1 - 62.1)\right) * 0.5 * 0.00694$

# 275 Lake Ridge Dr, Gretna, VA, United States

Gross Living Area: 2873 sq. ft



Space	Area (sq. ft)	Calculation <small>Coordinate Polygon Area Algorithm using inches</small>
FLOOR 5 (Living area)	573	$-\left((392.6 + 392.6) * (62.6 - 119) + (392.6 + 309.2) * (119 - 119) + (309.2 + 309.2) * (119 - 169.1) + (309.2 + 333.6) * (169.1 - 169.1) + (333.6 + 330.4) * (169.1 - 169.1) + (330.4 + 336.4) * (169.1 - 163.2) + (336.4 + 392.6) * (163.2 - 163.2) + (392.6 + 392.6) * (163.2 - 353.1) + (392.6 + 309.1) * (353.1 - 353.1) + (309.1 + 309.1) * (353.1 - 461.5) + (309.1 + 153.3) * (461.5 - 461.5) + (153.3 + 153.3) * (461.5 - 62.6) + (153.3 + 392.6) * (62.6 - 62.6)\right) * 0.5 * 0.00694$
LOW CEILING (Non-living area)	231	$-\left((153.3 + 153.3) * (62.6 - 461.5) + (153.3 + 69.9) * (461.5 - 461.5) + (69.9 + 69.9) * (461.5 - 62.6) + (69.9 + 153.3) * (62.6 - 62.6)\right) * 0.5 * 0.00694$



# 275 Lake Ridge Dr, Gretna, VA, United States

Gross Living Area: 2873 sq. ft

Space	Area (sq. ft)	Calculation <small>Coordinate Polygon Area Algorithm using inches</small>
LOW CEILING (Non-living area)	63	$-((392.6 + 392.6) * (353.1 - 461.5) + (392.6 + 309.1) * (461.5 - 461.5) + (309.1 + 309.1) * (461.5 - 353.1) + (309.1 + 392.6) * (353.1 - 353.1)) * 0.5 * 0.00694$
OTHER ROOM (Non-living area)	27	$-((392.6 + 392.6) * (119 - 163.2) + (392.6 + 336.4) * (163.2 - 163.2) + (336.4 + 330.4) * (163.2 - 169) + (330.4 + 330.4) * (169 - 169.1) + (330.4 + 333.6) * (169.1 - 169.1) + (333.6 + 309.2) * (169.1 - 169.1) + (309.2 + 309.2) * (169.1 - 119) + (309.2 + 392.6) * (119 - 119)) * 0.5 * 0.00694$